

## Product datasheet for **RG226088**

### PAK6 (NM\_001128628) Human Tagged ORF Clone

#### Product data:

Product Type:	Expression Plasmids
Product Name:	PAK6 (NM_001128628) Human Tagged ORF Clone
Tag:	TurboGFP
Symbol:	BUB1B-PAK6
Synonyms:	PAK-5; PAK-6; PAK5; PAK6
Mammalian Cell Selection:	Neomycin
Vector:	pCMV6-AC-GFP (PS100010)
E. coli Selection:	Ampicillin (100 ug/mL)



[View online »](#)

**ORF Nucleotide Sequence:**

>RG226088 representing NM\_001128628  
 Red=Cloning site Blue=ORF Green=Tags(s)

TTTTGTAATACGACTCACTATAGGGCGGCCGGGAATTCGTCGACTGGATCCGGTACCGAGGAGATCTGCC  
 GCC**CGGATCGCC**

ATGTTCCGCAAGAAAAAGAAGAAACGCCCTGAGATCTCAGCGCCACAGAAGCTCCAGCACCGTGTCCACA  
 CCTCCTTCGACCCCAAAGAAGGCAAGTTTGTGGGCCTCCCCACAATGGCAGAACATCCTGGACACACT  
 GCGGCGCCCAAGCCCGTGGTGGACCTTCGCGAATCACACGGGTGCAGCTCCAGCCCATGAAGACAGTG  
 GTGCGGGGCAGCGCATGCCTGTGGATGGCTACATCTCGGGGCTGCTCAACGACATCCAGAAGTTGTGAG  
 TCATCAGCTCCAACACCTGCGTGGCCGACGCCACCAGCCGGCGGGGCACAGTCCCTGGGGCTGCT  
 GGGGGATGAGCACTGGGCCACCGACCCAGACATGTACCTCCAGAGCCCCAGTCTGAGCGCACTGACCCC  
 CACGGCTCTACCTCAGTGAACGGGGCACACCAGCAGGCCACAAGCAGATGCCGTGGCCGAGCCAC  
 AGAGCCACGGGTCTGCCAATGGGCTGGCTGCAAAGGCACAGTCCCTGGGCCCGCCGAGTTTCAGGG  
 TGCTCGCAGCGTGTCTGCAGTGGGTGCTGCCTGCAGAGCTCCCACCAGGAGCTCGCCCCCAGC  
 GGCACCAATAGGCATGGAATGAAGGCTGCCAAGCATGGCTCTGAGGAGGCCCGGCCACAGTCTGCCTGG  
 TGGGCTCAGCCACAGGCAGGCCAGGTGGGGAAGGCAGCCCTAGCCCTAAGACCCGGGAGAGCAGCCTGAA  
 GCGCAGGCTATTCGAAGCATGTTCTGTCCACTGCTGCCACAGCCCCTCCAAGCAGCAGCAAGCCAGGC  
 CCTCCACCACAGAGCAAGCCCAACTCCTCTTCCGACCGCCGAGAAAGACAACCCCAAGCCTGGTGG  
 CCAAGGCCAGTCTTGCCTCGGACCAGCCGGTGGGGACCTTCAGCCCTCTGACCACTTCGGATACCA  
 CAGCCCCCAGAAGTCCCTCCGCACAGCCCCGGCCACAGGCCAGCTTCCAGGCCGTTTCCCCAGCGGGA  
 TCCCCCGCACCTGGCAGCCCAGATCAGCACCAGCAACCTGTACCTGCCCCAGGACCCACGGTTGCCA  
 AGGGTCCCTGGTGGTGGACACAGGTGTTGTGACACATGAGCAGTTCAAGGCTGCGTCAGGATGGT  
 GGTGGACCAGGGTGACCCCGGCTGCTGCTGGACAGTACGTGAAGATTGGCGAGGGCTCCACCGGCATC  
 GTCTGTTGGCCCGGAGAAGCACTCGGGCCGCCAGGTGGCCGTCAAGATGATGGACCTCAGGAAGCAGC  
 AGCGCAGGGAGCTGCTCTCAACGAGGTGGTGTATGCGGGACTACCAGCACTTCAACGTGGTGGAGAT  
 GTACAAGAGCTACCTGGTGGCGAGGAGCTGTGGGTGCTCATGGAGTTCTGCAGGGAGGAGCCCTCACA  
 GACATCGTCTCCAAGTCAGGCTGAATGAGGAGCAGATTGCCACTGTGTGTGAGGCTGTGCTGCAGGCC  
 TGGCTACCTGCATGCTCAGGGTGCATCCACCGGACATCAAGAGTGACTCCATCCTGCTGACCCTCGA  
 TGGCAGGGTGAAGCTCTCGGACTTCGGATTCTGTGCTCAGATCAGCAAAGACGTCCCTAAGAGGAAGTCC  
 CTGGTGGGAACCCCTACTGGATGGCTCCTGAAGTGATCTCCAGGTCTTTGTATGCCACTGAGGTGGATA  
 TCTGGTCTCTGGCATCATGGTATTGAGATGGTAGATGGGGAGCCACCTACTTCAAGTACTCCCCAGT  
 GCAAGCCATGAAGAGGCTCCGGGACAGCCCCCACCAGCTGAAAACTCTCACAAGGTCTCCCCAGTG  
 CTGCGAGACTTCTGGAGCGGATGCTGGTGCGGGACCCCAAGAGAGAGCCACAGCCAGGAGCTCCTAG  
 ACCACCCCTTCTGTGCAGACAGGGCTACCTGAGTGCCTGGTGGCCCTGATCCAGCTCTACCGAAAGCA  
 GACCTCCACCTGC

**ACGCGT**ACGCGGCCGCTCGAG - GFP Tag - GTTTAA

**Protein Sequence:** >RG226088 representing NM\_001128628  
 Red=Cloning site Green=Tags(s)

MFRKKKKRPEISAPQNFQHRVHTSFDPKGKGFVGLPPQWQNILDTLRRPKPVVDPSTRITRVQLQPMKTV  
 VRGSAMPVDGYISGLLNDIQKLSVISSNTLRGRSPTSRRAQSLGLLGDEHWATDPDMLYQSPQSERTDP  
 HGLYLSCNGGTPAGHKQMPWPEPQSPRVLNGLAAKAQSLGPAEFQASQRCLQLGACLQSSPPGASPTT  
 GTNRHGMKAAKHGSEEARPQSLVGSATGRPGGEGSPKTRSSLKRRLFRSMFLSTAATAPPSSSKPG  
 PPPQSKPNSSFRPPQKDNPPSLVAKAQLSPDQPVGTF SPLTTSSTSSPQKSLRTAPATGQLPGRSSPAG  
 SPRTWHAQISTSNLYLPQDPTVAKGALAGEDTGVVTHEQFKAALRMVVDQGDPRLLLLDSYVYKIGEGSTGI  
 VCLAREKHSGRQVAVKMDLRKQQRRELLFNEVIMRDYQHFNVVEMYKSYLVGEELWVLMFLQGGALT  
 DIVSQVRLNEEQIATVCEAVLQALAYLHAQGVHRDIKSDSILL TLDGRVKLSDFGFCAQISKDVPKRKS  
 LVGTPYWMapevisrsl yatevdiwslgimviemvdgepppyf sdsppvqamkrlrdspppklknsHKVSPV  
 LRDFLERMLVRDPQERATAQELLDHPFLLQTGLPECLVPLIQLYRKQTSTC

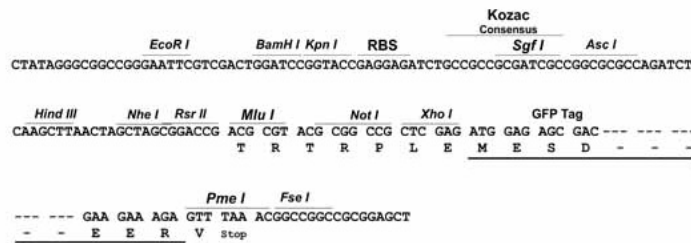
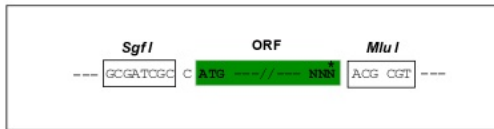
TRTRPLE - GFP Tag - V

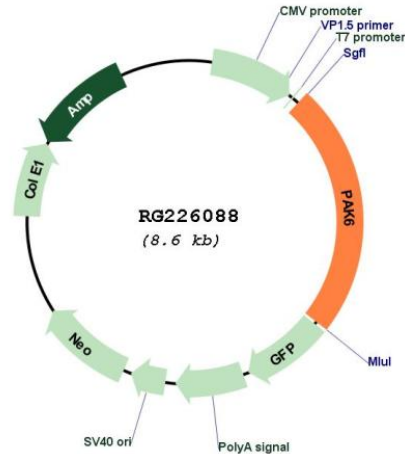
**Restriction Sites:**

SgfI-MluI

**Cloning Scheme:**

Cloning sites used for ORF Shuttling:



**Plasmid Map:**


**ACCN:** NM\_001128628

**ORF Size:** 2043 bp

**OTI Disclaimer:** The molecular sequence of this clone aligns with the gene accession number as a point of reference only. However, individual transcript sequences of the same gene can differ through naturally occurring variations (e.g. polymorphisms), each with its own valid existence. This clone is substantially in agreement with the reference, but a complete review of all prevailing variants is recommended prior to use. [More info](#)

**OTI Annotation:** This clone was engineered to express the complete ORF with an expression tag. Expression varies depending on the nature of the gene.

**Components:** The ORF clone is ion-exchange column purified and shipped in a 2D barcoded Matrix tube containing 10ug of transfection-ready, dried plasmid DNA (reconstitute with 100 ul of water).

**Reconstitution Method:**

1. Centrifuge at 5,000xg for 5min.
2. Carefully open the tube and add 100ul of sterile water to dissolve the DNA.
3. Close the tube and incubate for 10 minutes at room temperature.
4. Briefly vortex the tube and then do a quick spin (less than 5000xg) to concentrate the liquid at the bottom.
5. Store the suspended plasmid at -20°C. The DNA is stable for at least one year from date of shipping when stored at -20°C.

**RefSeq:** [NM\\_001128628.2](#), [NP\\_001122100.1](#)

**RefSeq Size:** 3939 bp

RefSeq ORF: 2046 bp

Locus ID: 106821730

UniProt ID: [Q9NQU5](#)

Cytogenetics: 15q15.1

**Gene Summary:** This gene represents readthrough transcription between the genes BUB1B (mitotic checkpoint serine/threonine-protein kinase BUB1 beta) and PAK6 (serine/threonine-protein kinase PAK 6). The protein encoded by the readthrough transcripts is the same as the product of the downstream gene (PAK6). Alternative splicing results in multiple transcript variants. [provided by RefSeq, Dec 2015]