

Product datasheet for **RG226081**

Granuphilin (SYTL4) (NM_001129896) Human Tagged ORF Clone

Product data:

Product Type:	Expression Plasmids
Product Name:	Granuphilin (SYTL4) (NM_001129896) Human Tagged ORF Clone
Tag:	TurboGFP
Symbol:	SYTL4
Synonyms:	SLP4
Mammalian Cell Selection:	Neomycin
Vector:	pCMV6-AC-GFP (PS100010)
E. coli Selection:	Ampicillin (100 ug/mL)



[View online »](#)

ORF Nucleotide
Sequence:

>RG226081 representing NM_001129896
Red=Cloning site Blue=ORF Green=Tags(s)

TTTTGTAATACGACTCACTATAGGGCGGCCGGAATTCGTCGACTGGATCCGGTACCGAGGAGATCTGCC
GCCCGCATCGCC

ATGTCGGAGTTACTGGACCTTTCTTTCTGTCTGAGGAGGAAAAGGATTTGATTCTCAGTGTCTACAGC
GAGATGAAGAGGTCCGGAAGCAGATGAGAAAAGGATTAGGCGACTAAAGAATGAGTTACTGGAGATAAA
AAGGAAAGGGGCCAAGAGGGGCAGCCAACACTACAGTGATCGGACCTGTGCCCGGTGCCAGGAGAGCCTG
GGCCGTTTGAGTCCAAAACCAATACTGTGGGGTTGTAATCACCTGGTGTGTCGGGACTGCCGCATAC
AGGAAAGCAATGGTACCTGGAGGTGCAAGGTGTGCGCCAAGGAAATAGAGTTGAAGAAAGCAACTGGGGA
CTGGTTTTATGACCAGAAAGTGAATCGCTTTGCTTACCGCACAGGTAGTGAGATAATCAGGATGTCCCTG
CGCCACAAACCTGCAGTGAGTAAAAGAGAGACAGTGGGACAGTCCCTCCTCATCAGACACAGATGGGTG
ACATCTGGCCAGGAAGAAAGATCATTGAGGAGCGCAGAAAGGAGCCAGTGTGCTATTTGAAGTCCAAA
GCTGAAAAGTGGAAAGAGTGCATTGGAAGCTGAGAGTGAAGTCTGGATAGCTTACAGCTGACTCGGAT
AGCACCTCCAGGAGAGACTCTCTGGATAAATCTGGCCTCTTCCAGAATGGAAGAAGATGTCTGCTCCCA
AATCTCAAGTAGAAAAGGAAACTCAGCCTGGAGGTCAAAATGTGGTATTTGTGGATGAGGGTGAGATGAT
ATTTAAGAAGAACCAGAAAAATCCTCAGGCCTTACAGTACACTAAATCTGTGATAGATCTTCGCCCCA
GAAGATGTGGTACATGAAAGTGGCTCCTTGGGAGACAGAAGCAAAATCCGTCAGGCTCAATGTGGATA
TGGAAGAGGAAGAAGAAGAAGACATTGACCACCTAGTGAAGTTACATCGCCAGAAGCTAGCCAGAAG
CAGCATGCAAAGTGGCTCCTCCATGAGTACGATCGGCAGCATGATGAGCATCTACAGTGAAGCTGGTGAT
TTCGGGAACATCTTTGTGACTGGCAGGATTGCCTTTCCCTGAAGTATGAGCAGCAAACCCAGAGTCTGG
TTGTCCATGTGAAGGAGTGCCATCAGCTGGCCTATGCTGATGAAGCCAAGAAGCGCTCTAACCCATATGT
GAAGACTTACCTTCTGCCTGACAAGTCCCGCCAAGGAAAAAGAAAAACCAGCATCAAGCGGGACACTATT
AATCCACTATATGATGAGACGCTGAGGTATGAGATCCCAGAATCTCTCCTGGCCCAGAGGACCTGCAGT
TCTCAGTTTGGCATCATGGTCGTTTTGGCAGAAACACTTTCTTGGAGAGGCAGAGATCCAGATGGATTC
CTGGAAGCTTGATAAGAACTGGATCATTGCCTCCCTTACATGGAAAGATCAGTGTGAGTCCCGGACT
GGCTTGCCATCACACAAAGGCGAGTTGGTGGTTTCATTGAAATACATCCCAGCCTCCAAAACCCCTGTTG
GAGGTGACCGGAAAAAGAGTAAAGTGGGAAGGGGAGAGCTCCAGGTGTGGATCAAAGAAGCCAAGAA
CTTGACGGCTGCCAAAGCAGGAGGGACTTCAGACAGCTTTGTCAAGGGATACCTCCTCCCATGAGGAAC
AAGGCCAGTAAACGTAAACTCCTGTGATGAAGAAGACCTGAATCCTCACTACAACCATACATTTGTCT
ACAATGGTGTGAGGCTGGAAGATCTACAGCATATGTGCCTGGAAGTACTGTGTGGGACCGGAGCCCT
GGCCAGCAATGACTTCTGGGAGGGGTCAGGCTGGGTGTTGGCACTGGGATCAGTAATGGGGAAGTGGTG
GACTGGATGGACTCGACTGGGGAAGAAGTGAAGCTGTGGCAGAAGATGCGACAGTACCGAGGCTCTGGG
CAGAAGGGACTCTGCAGCTCCGTTCTCAATGGCCAAGCAGAAGCTGGGTTTA

ACGCGTACGCGGCCGCTCGAG – GFP Tag – GTTTAA

Protein Sequence: >RG226081 representing NM_001129896
 Red=Cloning site Green=Tags(s)

MSELLDL SFLSEEEKDL ILSVLQRDEEVRKADEKRIRRLKNELLEIKRKGAKRGSQHYSDRTCARCQESL
 GRLSPKTNTCRGCNHLVCRDCRIQESNGTWRCKVCAKEIELKKTATGDFYDQKVNRFAYRTGSEIIRMSL
 RHKPAVSKRETVGQSL LHQTQMGDIWPRKIIQERQKEPSVLFEVPKLKSGKSALEAESESLDSFTADSD
 STSRRDSL DKSGLFP EWKKMSAPK SQVEKETQPGGQNVV FVDEGEMIFKKNTRKILRPSEYTKSVIDLRP
 EDVVHESGLGDRSKSVPLNVDMEEEEEEDIDHLVKLHRQKLARSSMQSGSSMSTIGSMMSIYSEAGD
 FGNIFVTGRIAFSLKYEQQTQSLVHVHKECHQLAYADEAKKRSNPYVKTYLLPDKSRQGKRKTSIKRDTI
 NPLYDETLRYEIPESLLAQRTLQFSVWHHGRFGRNTFLGEAEIQMDSWKLDKKLDHCLPLHGKISAESPT
 GLPSHGELV VSLKYIPASKTPVGGDRKSKGEGGELQVWIKEAKNL TAAKAGTSDSFVKG YLLPMRN
 KASKRKT PVMKKTLPNPHYNHTFVYNGVRLLEDLQHMCL ELTVWDREPLASNDFLGGVRLGVGTGISNGEVV
 DWMDSTGEEVSLWQKMRQYPGSWAEGTLQLRSSMAKQKLG L

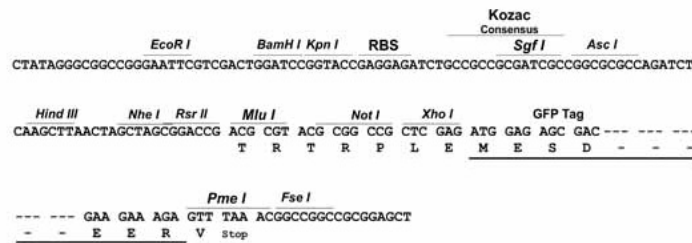
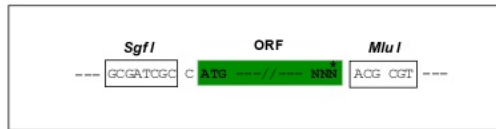
TRTRPLE - GFP Tag - V

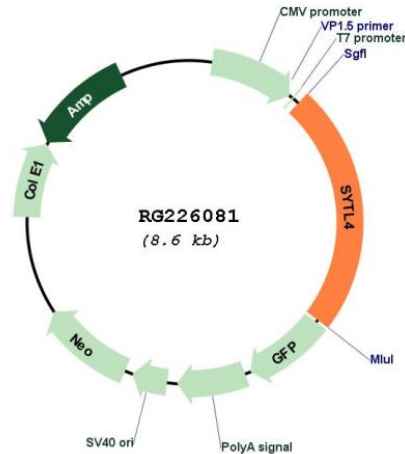
Restriction Sites:

Sgfl-MluI

Cloning Scheme:

Cloning sites used for ORF Shuttling:



Plasmid Map:


ACCN: NM_001129896

ORF Size: 2013 bp

OTI Disclaimer: The molecular sequence of this clone aligns with the gene accession number as a point of reference only. However, individual transcript sequences of the same gene can differ through naturally occurring variations (e.g. polymorphisms), each with its own valid existence. This clone is substantially in agreement with the reference, but a complete review of all prevailing variants is recommended prior to use. [More info](#)

OTI Annotation: This clone was engineered to express the complete ORF with an expression tag. Expression varies depending on the nature of the gene.

Components: The ORF clone is ion-exchange column purified and shipped in a 2D barcoded Matrix tube containing 10ug of transfection-ready, dried plasmid DNA (reconstitute with 100 ul of water).

Reconstitution Method:

1. Centrifuge at 5,000xg for 5min.
2. Carefully open the tube and add 100ul of sterile water to dissolve the DNA.
3. Close the tube and incubate for 10 minutes at room temperature.
4. Briefly vortex the tube and then do a quick spin (less than 5000xg) to concentrate the liquid at the bottom.
5. Store the suspended plasmid at -20°C. The DNA is stable for at least one year from date of shipping when stored at -20°C.

RefSeq: [NM_001129896.3](#)

RefSeq Size: 3884 bp

RefSeq ORF: 2016 bp

Locus ID: 94121

UniProt ID: [Q96C24](#)

Cytogenetics: Xq22.1

Gene Summary: This gene encodes a member of the synaptotagmin like protein family. Members of this family are characterized by an N-terminal Rab27 binding domain and C-terminal tandem C2 domains. The encoded protein binds specific small Rab GTPases and is involved in intracellular membrane trafficking. This protein binds Rab27 and may be involved in inhibiting dense core vesicle exocytosis. Alternate splicing results in multiple transcript variants that encode the same protein. [provided by RefSeq, Mar 2010]