

Product datasheet for **RG226070**

MARK3 (NM_001128921) Human Tagged ORF Clone

Product data:

Product Type:	Expression Plasmids
Product Name:	MARK3 (NM_001128921) Human Tagged ORF Clone
Tag:	TurboGFP
Symbol:	MARK3
Synonyms:	CTAK1; KP78; Par-1a; PAR1A; VIPB
Mammalian Cell Selection:	Neomycin
Vector:	pCMV6-AC-GFP (PS100010)
E. coli Selection:	Ampicillin (100 ug/mL)



[View online »](#)

ORF Nucleotide
Sequence:

>RG226070 representing NM_001128921
Red=Cloning site Blue=ORF Green=Tags(s)

TTTTGTAATACGACTCACTATAGGGCGGCCGGAATTCGTCGACTGGATCCGGTACCGAGGAGATCTGCC
GCCGCGATCGCC

ATGTCCACTAGGACCCCATTTGCCAACGGTGAATGAACGAGACACTGAAAACCACACGTCACATGGAGATG
GGCGTCAAGAAGTTACCTCTCGTACCAGCCGCTCAGGAGCTCGGTGTAGAACTCTATAGCCTCCTGTGC
AGATGAACAACCTCACATCGGAACTACAGACTGTTGAAAAACAATCGGCAAGGGGAATTTTGCAAAAAGTA
AAATTGGCAAGACATATCCTTACAGGCAGAGAGTTGCAATAAAAAATAATTGACAAAACCTCAGTTGAATC
CAACAAGTCTACAAAAGCTCTTCAGAGAAGTAAGAATAATGAAGATTTTAAATCATCCCAATATAGTGAA
GTTATTGCAAGTCATTGAAACTGAAAAACACTCTACCTAATCATGGAATATGCAAGTGGAGGTGAAGTA
TTTGACTATTTGGTTGCACATGGCAGGATGAAGGAAAAAGAAGCAAGATCTAAATTTAGACAGATTGTGT
CTGCAGTTCAATACTGCCATCAGAAACGGATCGTACATCGAGACCTCAAGGAAGTGAAGAGAGAGATT
AAGAGGGAAATACAGAATTCCTTCTACATGTCTACAGACTGTGAAAACCTTCTCAAACGTTTCCTGGTG
CTAAATCCAATTAACCGCGGCACTCTAGAGCAAATCATGAAGGACAGGTGGATCAATGCAGGGCATGAAG
AAGATGAACTCAAACATTTGTTGAACCAGAGCTAGACATCTCAGACCAAAAAAGATAGATATTATGGT
GGGAATGGGATATTCACAAGAAGAAATCAAGAATCTCTTAGTAAGATGAAATACGATGAAATCACAGCT
ACATATTTGTTATTGGGGAGAAAATCTTCAGAGCTGGATGCTAGTGATTCCAGTTCTAGCAGCAATCTTT
CACTTGCTAAGGTTAGGCCGAGCAGTGATCTCAACAACAGTACTGGCCAGTCTCCTCACCACAAAGTGCA
GAGAAGTGTTTTTCAAGCCAAAAGCAAAGACGCTACAGTGACCATGCTGGACCAGCTATTCTTCTGTT
GTGGCGTATCCGAAAAGGAGTCAGACCAGCACTGCAGATAGTGACCTCAAAGAAGATGGAATTTCTCCC
GGAAATCAAGTGGCAGTGCTGTTGGAGGAAAGGGAATTGCTCCAGCCAGTCCCATGCTTGGGAATGCAAG
TAATCCTAATAAGGCGGATATTCTGAACGCAAGAAAAGCTCCACTGTCCCTAGTAGTAACACAGCATCT
GGTGAATGACACGACGAAATACTTATGTTTGCAGTGAGAGAACTACAGCTGATAGACACTCAGTGATTC
AGAATGGCAAAGAAAACAGCACTATTCCTGATCAGAGAACTCCAGTTGCTTCAACACACAGTATCAGTAG
TGCAGCCACCCAGATCGAATCCGCTTCCCAAGAGGCACTGCCAGTCGTAGCACTTTCCACGGCCAGCCC
CGGGAACGGCGAACCACGCAACATAAATGGCCCTCCTGCCTCTCCAGCCTGTCCCATGAAGCCACACCAT
TGTCCCAGACTCGAAGCCGAGGCTCCACTAATCTCTTTAGTAAATTAACCTCAAACCTCACAGGAGAAA
CATGTCATTGAGTTTATCAAAAGTCGCAATGTATCTGCTGAGCAAAAAGATGAAAACAAAGAAGCAAAG
CCTCGATCCCTACGCTTACCTGGAGCATGAAAACCACTAGTTCAATGGATCCCAGGACATGATGCGGG
AAATCCGCAAAGTGTGGACGCCAATAACTGCGACTATGAGCAGAGGGAGCGCTTCTTGCTTTCTGCGT
CCACGGAGATGGGCACGCGGAGAACCTCGTGCAAGTGGGAAATGGAAGTGTGCAAGCTGCCAAGACTGCT
CTGAACGGGGTCCGGTTAAGCGGATATCGGGGACATCCATAGCCTTCAAAAATATTGCTTCAAAAATTG
CCAATGAGCTAAAGCTG

ACGCGTACGCGGCCGCTCGAG – GFP Tag – GTTTAA

Protein Sequence: >RG226070 representing NM_001128921
 Red=Cloning site Green=Tags(s)

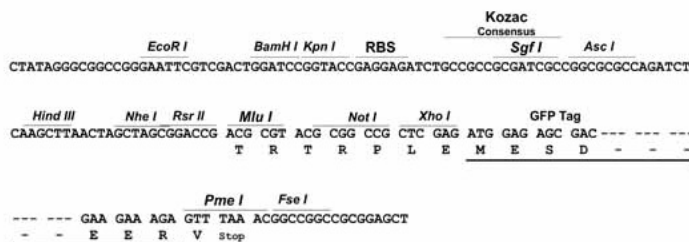
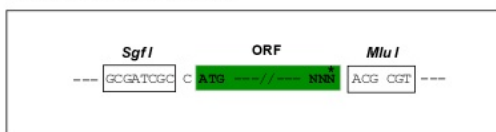
MSTRTPPLTVNERDTENHTSHGDGRQEVTSRTSRSGARCRNSIASCADEQPHIGNYRLKLTIGKGNFAKV
 KLARHILTGREVAIKIIDKTQLNPTSLQKLFREVRIMKILNHPNIVKLFVIEETEKTLYLIMEYASGGEV
 FDYLVAHGRMKEKEARSKFRQIVSAVQYCHQKRIVHRDLKELRERVLRGKYRIPFYMSTDCENLLKRLV
 LNPIKRGTLQIMKDRWINAGHEEDELKPFVEPELDISDQKRIDIMVGMGYSQEEIQESLSKMKYDEITA
 TYLLLGRKSELDAOSSSSNLAKVSRPSSDLNNSTGQSPHHKVQRSVFSQKQRRYS DHAGPAIPSV
 VAYPKRSQTSTADSDLKEDGISSRKSSGSAVGGKIAPASPMLGNASPNKADIPERKKSSTVPSSNTAS
 GGMTRRNTYVCSERTTADRHSVIQNGKENSTIPDQRTPVASTHSISSAATPDRIRFPRGTASRSTFHGQP
 RERRTATYNGPPASPSLSHEATPLSQTRSRSSTNLF SKL TSKL TRRNMSFRF IKS RNVS AEQK DENKEAK
 PRSLRFTWSMKTSSMDPGDMMREIRKVL DANNC DYEQRERFLLCVHGDGHAENLVQWEME VCKLPRLS
 LNGVRFKRISGTSIAFKNIASKIANELKL

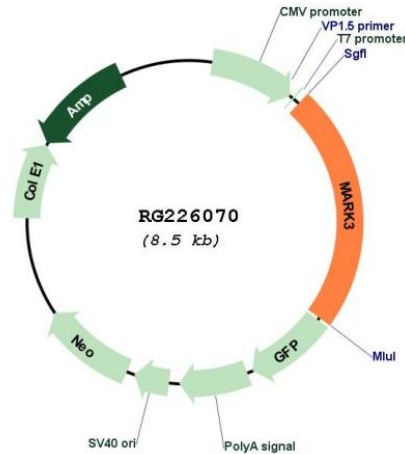
TRTRPLE - GFP Tag - V

Restriction Sites: SgfI-MluI

Cloning Scheme:

Cloning sites used for ORF Shuttling:



Plasmid Map:


ACCN: NM_001128921

ORF Size: 1977 bp

OTI Disclaimer: Due to the inherent nature of this plasmid, standard methods to replicate additional amounts of DNA in *E. coli* are highly likely to result in mutations and/or rearrangements. Therefore, OriGene does not guarantee the capability to replicate this plasmid DNA. Additional amounts of DNA can be purchased from OriGene with batch-specific, full-sequence verification at a reduced cost. Please contact our customer care team at custsupport@origene.com or by calling 301.340.3188 option 3 for pricing and delivery.

The molecular sequence of this clone aligns with the gene accession number as a point of reference only. However, individual transcript sequences of the same gene can differ through naturally occurring variations (e.g. polymorphisms), each with its own valid existence. This clone is substantially in agreement with the reference, but a complete review of all prevailing variants is recommended prior to use. [More info](#)

OTI Annotation: This clone was engineered to express the complete ORF with an expression tag. Expression varies depending on the nature of the gene.

Components: The ORF clone is ion-exchange column purified and shipped in a 2D barcoded Matrix tube containing 10ug of transfection-ready, dried plasmid DNA (reconstitute with 100 ul of water).

Reconstitution Method:	<ol style="list-style-type: none">1. Centrifuge at 5,000xg for 5min.2. Carefully open the tube and add 100ul of sterile water to dissolve the DNA.3. Close the tube and incubate for 10 minutes at room temperature.4. Briefly vortex the tube and then do a quick spin (less than 5000xg) to concentrate the liquid at the bottom.5. Store the suspended plasmid at -20°C. The DNA is stable for at least one year from date of shipping when stored at -20°C.
RefSeq:	NM_001128921.1 , NP_001122393.1
RefSeq Size:	3264 bp
RefSeq ORF:	1980 bp
Locus ID:	4140
UniProt ID:	P27448
Cytogenetics:	14q32.32-q32.33
Protein Families:	Druggable Genome, Protein Kinase
Gene Summary:	The protein encoded by this gene is activated by phosphorylation and in turn is involved in the phosphorylation of tau proteins MAP2 and MAP4. Several transcript variants encoding different isoforms have been found for this gene. [provided by RefSeq, Oct 2011]