

## Product datasheet for **RG226066**

### **SRRM3 (NM\_001110199) Human Tagged ORF Clone**

#### **Product data:**

Product Type:	Expression Plasmids
Product Name:	SRRM3 (NM_001110199) Human Tagged ORF Clone
Tag:	TurboGFP
Symbol:	SRRM3
Mammalian Cell Selection:	Neomycin
Vector:	pCMV6-AC-GFP (PS100010)
E. coli Selection:	Ampicillin (100 ug/mL)



[View online »](#)

**ORF Nucleotide Sequence:**

>RG226066 representing NM\_001110199  
 Red=Cloning site Blue=ORF Green=Tags(s)

TTTTGTAATACGACTCACTATAGGGCGGCCGGAATTCGTCGACTGGATCCGGTACCGAGGAGATCTGCC  
 GCC**GCGATCGCC**

ATGTCCTCCACCGTGAACAACGGGGCGGCCAGCATGCAGTCCACACCCGACGCCGGAACGGCTTCCCGC  
 AGCCAGCTCCTCCTCGGGACCTGGCCGCGGGCGGAAGAGGAGCTGCGCGCCGCGAGCCGGGCTGGT  
 GAAGCGCGCACCCGCGAGATCCTGGACCAGAGCGCAAGCGCGGGTGGAGCTCAAGTGCATGGAGCTG  
 CAGGAGATGATGGAGGAGCAGGGGTATTCGAGGAGGAGATTCGCGAGAAAGTGGGGACATTCCGGCAGA  
 TGCTGATGGAGAAGGAGGGAGTCTCACCAGGGAGGACCGGCCTGGGGCCACATTGTGGCGGAGACCC  
 GCGGCTGACCGAGGGCGCTGAGCCGGGCTGGAGTACGCGCCCTTTGACGATGACGACGGCCAGTGGAC  
 TGTGACTGCCCGGCTCCTGCTACCGCGCCACCGCGGTACAGGACCAAGCATTGGTCTAGCAGCTCGG  
 CATCGCCCCCTCCAAGAAAAAGAAAAAGAAAGGCGGCCACCGGAGAAGCCGAAAAAGAGGAGACT  
 GGAGTCCGAATGCAGCTGTGGGAGCTCCTCACCCTCCGCAAGAAGAAGAAGAGTGTGAAGAAGCATCGC  
 CGAGACAGGTCTGATTCTGGGTCCCGGAGGAAGAGACGGCACAGATCTCGAAGCTCCAAGTGCAAAAGAA  
 AAGAGAAGAACAAGAGAAGAAGAGGCCTCACACAGAGTCCCCAGGCCGGAGGTCTCATCGCCATAGCAG  
 TGGCAGCTCCCACAGCCCTCCCTCTCCTCCCCTACAGTGATTCCAGATCTCCCAGCAGGCTGAGCCCC  
 AAGCACCGAGACGAAGGGCGAAAGACGGGACGCCAGCGGTCCAGCGGAAGCCGGTTCGCTTCCCCGTGCG  
 GCGGCAGCGGATGGGGTTCGCCCCAGCGGAACGGCGGACGCGGGCAGCGGAGCGGAGCGCACGGGGCCG  
 CCCCAGCTCGGCGCACAGCCGCCGATAAGCCAGCTCGCCCTCGCCAGGGTCCGTGACAAGGCGGGC  
 GCCCGCACCCACGCCGCCCGCGGGGGAAGGAGAGCCGAGCCCGCTCGGCGCGCTCGTCCCAAG  
 GTCGCGGAGCCCGCGGGCGGGGCGGGCAGGCGGCGGGCGGGCGGGCTAGCGGGCGGCTCGCG  
 GTCTCGGCGTCCGCGCCCCGCCAGGGGTTCGCGGCGCCCCCGGCCCGCGCCCCCGGGGCTCGTTCG  
 CGCTCGCTCAGCAGGGCCGCTCCAGCAGCGACTCCGGCAGCGGCGCGGCGCCCCGGCCCCGGCCCCG  
 AGCCCGGCTCTGAGCGAGGCCACGGCGACACGGGAAACGGGCAAGGAGCGCCCCCGCGCGCGGGCC  
 CGCCAGCACCTCTCCGTCCCCGGCGCGCACGGCCGGCGGGCGGCCAGAGGGAAAGAGCTCGTCGCGC  
 AGCCCCGGCCCGCACCCCGCTCCTGGAGCTCCAGCCGCTCGCCCTCAAATCTCGCTCGCGCTCTGCGG  
 AGAAGCGGCCACAGCCCCAGCCGCTCGCCGTCGCCAAGAAGCCCTCAGCCGGGACAAGGACGGCGA  
 GGGCCGCGCAAGGCACTCTGAGGCGGAGCCACCGCGCCCGGCGCGCTCCCGCAGCTACTCGCCATC  
 CGCAAGCGGCGCGGGACTCGCCAAGCTTCATGGAGCCGCGGCGCATACCAGCGCCCGAAGCGTCTTA  
 TTCCATACTACCGGCCAGCCCTTCTCCTCCTCAGCTGTTGAGCAGGACTACTCGACCCGGAGCCA  
 CAGCCGACGCCAGCCCGGCCACAGCCACGGGAGCTACAGCAGTTCGAGCCATGGGACCCGACGCGG  
 ACACGAGCCCTCGAGGACCCAGTCCAGCTACCACAGCCGGAGCAGCTCTGAGAGCGGGGGCTTC

**ACGCGT**ACGCGGCCGCTCGAG - GFP Tag - GTTTAA

**Protein Sequence:**

>RG226066 representing NM\_001110199  
 Red=Cloning site Green=Tags(s)

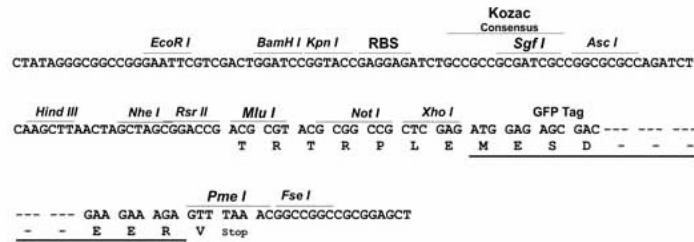
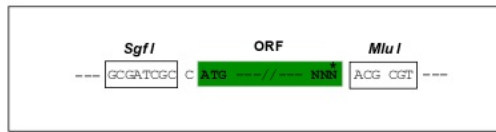
MSSTVNNGAASMQSTPDAANGFPQPSSSSGTWPRAEEELRAAEPLVKRAHREILDHERKRRVELKCMEL  
 QEMMEEQGYSEEEIRQKVGTFRQMLMEKEGVL TREDRPGGHIVAETPRL TEGAEPGLEYPFDDDDGPVD  
 CDCPASCYRHRGYRTHWSSSSASPPPKKKKKKGGHRRSRKKRRLSECSGSSSPLRKKKSVKKHR  
 RDRSDSGSRRRHRRSRCKRKEKNEKRPHTESPGRSRHRHSSGSSHSPSLSSHYSRSPRSPRLSP  
 KHRDEGRKTGSQRSSGSRSPSPSGSGWSPQRNGSGQRSGAHGGRPGSAHSPDPKSSSPRVRDKAA  
 AAAPTTPARGKESPSRSPAPSSQGRGGAAGGARRRRRRRRRRSRSSASAPRRRGRRRPRPAPPRGSS  
 RSLSRARSSSDSGSRGAPGPGPEPGERGHGGHKKRAKERPPRARPASTSPSPGAHGRRGGPEGKSSSR  
 SPGPHRSPSSSRSPSKRSRSAEKRPSPSRSPSPKPLSRDKDGEGRARHSEAEATRARRRSYSPI  
 RKRRRDSPSFMEPRRITSARKRPIPYRSPSSSSSCLSSDYSTRSHSRSPSPGHSHGYSRSHGTRSR  
 TRSPSRTPSPSYHSRSESSEGGF

**TRTRPLE** - GFP Tag - V

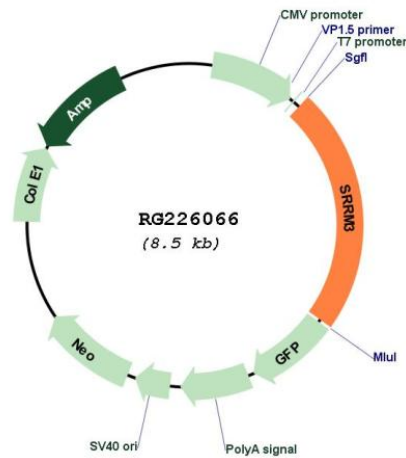
Restriction Sites: Sgfl-MluI

Cloning Scheme:

Cloning sites used for ORF Shutting:



Plasmid Map:



ACCN: NM\_001110199

ORF Size: 1959 bp

<b>OTI Disclaimer:</b>	The molecular sequence of this clone aligns with the gene accession number as a point of reference only. However, individual transcript sequences of the same gene can differ through naturally occurring variations (e.g. polymorphisms), each with its own valid existence. This clone is substantially in agreement with the reference, but a complete review of all prevailing variants is recommended prior to use. <a href="#">More info</a>
<b>OTI Annotation:</b>	This clone was engineered to express the complete ORF with an expression tag. Expression varies depending on the nature of the gene.
<b>Components:</b>	The ORF clone is ion-exchange column purified and shipped in a 2D barcoded Matrix tube containing 10ug of transfection-ready, dried plasmid DNA (reconstitute with 100 ul of water).
<b>Reconstitution Method:</b>	<ol style="list-style-type: none"><li>1. Centrifuge at 5,000xg for 5min.</li><li>2. Carefully open the tube and add 100ul of sterile water to dissolve the DNA.</li><li>3. Close the tube and incubate for 10 minutes at room temperature.</li><li>4. Briefly vortex the tube and then do a quick spin (less than 5000xg) to concentrate the liquid at the bottom.</li><li>5. Store the suspended plasmid at -20°C. The DNA is stable for at least one year from date of shipping when stored at -20°C.</li></ol>
<b>RefSeq:</b>	<a href="#">NM_001110199.3</a>
<b>RefSeq Size:</b>	3651 bp
<b>RefSeq ORF:</b>	1962 bp
<b>Locus ID:</b>	222183
<b>Cytogenetics:</b>	7q11.23