

## Product datasheet for **RG226050**

### CLK3 (NM\_001130028) Human Tagged ORF Clone

#### Product data:

Product Type:	Expression Plasmids
Product Name:	CLK3 (NM_001130028) Human Tagged ORF Clone
Tag:	TurboGFP
Symbol:	CLK3
Synonyms:	PHCLK3; PHCLK3/152
Mammalian Cell Selection:	Neomycin
Vector:	pCMV6-AC-GFP (PS100010)
E. coli Selection:	Ampicillin (100 ug/mL)



[View online »](#)

**ORF Nucleotide Sequence:**

>RG226050 representing NM\_001130028  
 Red=Cloning site Blue=ORF Green=Tags(s)

GACGTTGTATACGACTCCTATAGGGCGGCCGGGAATTCGTCGACTGGATCCGGTACCGAGGAGATCTGCC  
 GCCGGCGCGCC

ATGCCCGTCTCTCCGCGCAGGAGGGAGTTGCGGACCACCGGGGTGCGGGCAGGAGCGGGCCCA  
 GCCCACGGCCAGGTCGGGGCCCCACCTCTCGGCTCTGAGAGCCAGCCGGCCCGGGCCGCGCACCTGTC  
 AGGTGCGGGGACCTACGTGCGCCGCGACACGGCGGAGGCGGGCCGGCCAGGCTCGTCCCTCGGCCCT  
 CCCGAACTAGTCTCCTAGGCCGCGCGCCCGCGGAGCGGAGAGGGCTGGTGCCCGGAGCCTTCGAGT  
 CGGGGGCTAGAGCGGCCAGGCTCCGAGCCGGTTCGAGCCAGGCTGGCAGCGGTCGTCACGCGAGGG  
 GGCGGGGCTGCCACGGCGGAGGTGCGACCGGAAGCGGAAGAGGCGCTCGGAGCGGGAGTGGGCCTA  
 GCTGCAGCCGGAGCTGGGAGACGATGCATCACTGTAAGCGATACCGCTCCCTGAACCAGACCCGTACC  
 TGAGCTACCGATGGAAGAGGAGGAGTCTACAGTCGGAACATGAAGGGAGACTGCGATACCCGTCGCG  
 AAGGGAGCCTCCCCACGAAGATCTCGTCCAGAAGCCATGACCGCTGCCCTACCAGAGGAGGTACCGG  
 GAGCGCCGTGACAGCGATACATACCGGTGTGAAGAGCGGAGCCATCCTTTGAGAGGACTACTATGGAC  
 CTTACGTTCTCGTCATCGTCGGCGATCGCGGGAGAGGGGCCATACCGACCCGCAAGCATGCCACCA  
 CTGCCACAAACGCCGACCAGGTCTTGTAGCAGCGCTCCTCGAGAAGCCACAGAGCAGTAAGCGCAGC  
 AGCCGGAGTGTGGAAGATGACAAGGAGGGTACCTGGTGTGCCGATCGGCGATTGGCTCCAAGAGCGAT  
 ATGAGATTGTGGGAACCTGGTGAAGGCACCTTTGGCAAGTGGTGGAGTGCTTGACCATGCCAGAGG  
 GAAGTCTCAGGTTGCCCTGAAGATCATCCGCAACGTGGCAAGTACCGGGAGGCTGCCCGCTAGAAATC  
 AACGTGCTCAAAAAATCAAGGAGAAGGACAAAGAAAACAAGTTCCTGTGTGCTTGATGTCTGACTGGT  
 TCAACTCCACGGTCACATGTGCATCGCCTTTGAGCTCCTGGCAAGAACACCTTTGAGTTCCTGAAGGA  
 GAATAACTCCAGCCTTACCCCTACCACATGTCCGGCACATGGCCTACCAGCTCTGCCACGCCCTTAGA  
 TTTCTGCATGAGAATCAGCTGACCCATACAGACTTGAACCAGAGAACATCCTGTTTGTGAATTCTGAGT  
 TTGAAACCCTCTACAATGAGCACAAGAGCTGTGAGGAGAAGTCAAGTGAAGAACACCAGCATCCGAGTGGC  
 TGACTTTGGCAGTGCCACATTTGACCATGAGCACCACACCACCTTGTGGCCACCCGTCACTATCGCCC  
 CCTGAGGTGATCCTTGTGCTGGGCTGGGCACAGCCCTGTGACGTCTGGAGCATTGGCTGCATTCTTTG  
 AGTACTACCGGGCTTCACTCTTCCAGACCCACGAAAACCGAGAGCACCTGGTGTGATGAGAGAAGT  
 CCTAGGGCCCATCCATCACACATGATCCACCGTACCAGGAAGCAGAAATATTTCTACAAAGGGGCGCTA  
 GTTTGGGATGAGAACAGCTCTGACGGCCGATGTGAAGGAGAACTGCAACCTCTGAAGAGTTACATGC  
 TCCAAGACTCCCTGGAGACGTGACGCTGTTTACCTGATGAGGAGGATGTTAGAATTTGACCTGCCCA  
 GCGCATCACACTGGCCGAGGCCCTGCTGCACCCCTTCTTGTGCGCTGACCCCTGAGGAGCGGTCTTCC  
 CACACCAGCCGAACCAAGCAGA

ACGCGTACGCGGGCCGCTCGAG – GFP Tag – GTTTAA

**Protein Sequence:**

>RG226050 representing NM\_001130028  
 Red=Cloning site Green=Tags(s)

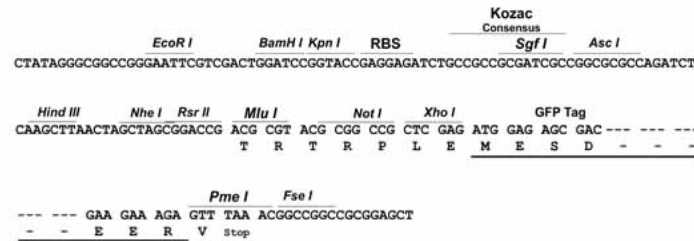
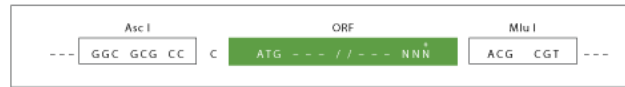
MPVL SARRRELADHAGSGRRSGPSPTARSOPHLSALRAQPARAAHL SGRGTYVRRD TAGGGPQARPLGP  
 PGTSL LGRGARRSGEGWCPGAFESGARAARPPSRVEPRLATAASREGAGLPRAEVAAGSGRGARSGEWGL  
 AAAGAWETMHHCKRYRSPDPYLSYRWKRRRSYSREHEGRLRYP SRREPPRRSRSHDR LPYQRRYR  
 ERRDSDTYRCEERSPSFGEDYYGPSRSRHRRRSRERGPYRTRKHAHHCHKRRTRSCSSASSRSQQSKRS  
 SRSVEDDKEGHLVCRIGDWLQERYEIVGNL GEGTFGKVV ECLDHARGKSQVALKI IRNVGKYREARLEI  
 NVLKKIKEKDKENKFLCVMDSWFNFHGHMCIAFELLGKNTFEFLKENNFQYPLPHVRHMAYQLCHALR  
 FLHENQLTHTDLKPENILFVNSEFETLYNEHKSCEESVKNTSIRVADFGSATFDHEHHTTIVATRHYRP  
 PEVILEL GWAQPCDVWSIGCILFEYYRGFTLFQTHENREHLVMEKILGPIPSHMIHRTRKQKYFYKGL  
 VWDENSSDGRYVKENCKPLKSYMLQDSLEHVQLFDLMRRMLEFDPQRITLAEALLHPFFAGLTPEERSF  
 HTSRNPSR

TRTRPLE – GFP Tag – V

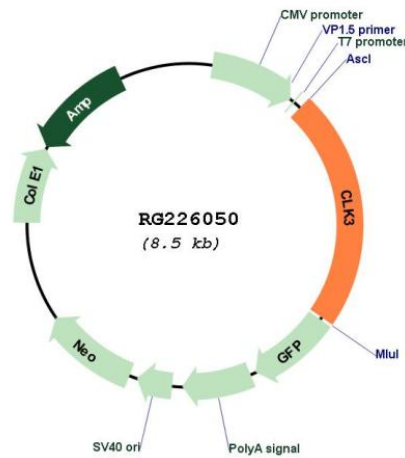
Restriction Sites: Ascl-MluI

Cloning Scheme:

Cloning sites used for ORF Shuttling:



Plasmid Map:



ACCN: NM\_001130028

ORF Size: 1914 bp

<b>OTI Disclaimer:</b>	The molecular sequence of this clone aligns with the gene accession number as a point of reference only. However, individual transcript sequences of the same gene can differ through naturally occurring variations (e.g. polymorphisms), each with its own valid existence. This clone is substantially in agreement with the reference, but a complete review of all prevailing variants is recommended prior to use. <a href="#">More info</a>
<b>OTI Annotation:</b>	This clone was engineered to express the complete ORF with an expression tag. Expression varies depending on the nature of the gene.
<b>Components:</b>	The ORF clone is ion-exchange column purified and shipped in a 2D barcoded Matrix tube containing 10ug of transfection-ready, dried plasmid DNA (reconstitute with 100 ul of water).
<b>Reconstitution Method:</b>	<ol style="list-style-type: none"><li>1. Centrifuge at 5,000xg for 5min.</li><li>2. Carefully open the tube and add 100ul of sterile water to dissolve the DNA.</li><li>3. Close the tube and incubate for 10 minutes at room temperature.</li><li>4. Briefly vortex the tube and then do a quick spin (less than 5000xg) to concentrate the liquid at the bottom.</li><li>5. Store the suspended plasmid at -20°C. The DNA is stable for at least one year from date of shipping when stored at -20°C.</li></ol>
<b>RefSeq:</b>	<a href="#">NM_001130028.1</a> , <a href="#">NP_001123500.1</a>
<b>RefSeq Size:</b>	2713 bp
<b>RefSeq ORF:</b>	1473 bp
<b>Locus ID:</b>	1198
<b>UniProt ID:</b>	<a href="#">P49761</a>
<b>Cytogenetics:</b>	15q24.1
<b>Protein Families:</b>	Druggable Genome, Protein Kinase
<b>Gene Summary:</b>	This gene encodes a protein belonging to the serine/threonine type protein kinase family. This protein is a nuclear dual-specificity kinase that regulates the intranuclear distribution of the serine/arginine-rich (SR) family of splicing factors. Two transcript variants encoding different isoforms have been found for this gene. Related pseudogenes are located on chromosomes 1 and 9. [provided by RefSeq, Jul 2008]