

Product datasheet for **RG226048**

GSPT1 (NM_001130006) Human Tagged ORF Clone

Product data:

Product Type:	Expression Plasmids
Product Name:	GSPT1 (NM_001130006) Human Tagged ORF Clone
Tag:	TurboGFP
Symbol:	GSPT1
Synonyms:	551G9.2; eRF3a; ETF3A; GST1
Mammalian Cell Selection:	Neomycin
Vector:	pCMV6-AC-GFP (PS100010)
E. coli Selection:	Ampicillin (100 ug/mL)



[View online »](#)

ORF Nucleotide Sequence:

>RG226048 representing NM_001130006
 Red=Cloning site Blue=ORF Green=Tags(s)

TTTTGTAATACGACTCACTATAGGGCGGCCGGGAATTCGTCGACTGGATCCGGTACCGAGGAGATCTGCC
 GCC**CGCATCGCC**

ATGGATCCGGGCAGTGGCGGCGGCGGCGGCGGCGGCGGCGGCGGCGGCGGAGCAGCAGCGGCAGCAGCAGCA
 CGGACTCGGCGCCTGACTGCTGGGACCAGGCGGACATGGAAGCCCCGGGCCGGCCCTTGGCGGCGCGG
 CGGCTCCCTGGCGGCGGCGGCGGAGGCCAGCGGAGAACCTCAGCGCGGCCCTCAGCGGCAACTCAAC
 GTCAACGCCAAGCCCTTCGTGCCAACGTCCACGCCCGGAGTTCGTGCCGTCTTCTGCGGGGCCGG
 CAGCGCCGCCACCCAGCTGGCGGCGCCCAATAACCACGGAGCCGGCAGCGCGGGAGGCGCGTGC
 GGCACCTGTGGAATCCTCTCAAGAGAACAGTCATTGTGTGAAGTTCAAATTCAGCTGTAGCATGGAA
 CTTTCAGAACCTATTGAAAATGGAGAGACAGAAATGTCTCCAGAAGAATCATGGGAGCACAAGAAGAAA
 TAAGTGAAGCAGAGCCAGGGGTGGTTCCTTGGGAGATGGAAGGCCGCCAGAGGAAAGTGCCCATGAAAT
 GATGGAGGAGGAAGAGGAAATCCAAAACCTAAGTCTGTGGTTGCACCGCAGGTGCTCCTAAGAAAGAG
 CATGTAATGTAGTATTCATTGGGCACGTAGATGCTGGCAAGTCAACCATTGGAGGACAAAATAATGTATT
 TGAAGGAGGAAAGAGGAAATCCAAAACCTAAGTCTGTGGTTGCACCGCAGGTGCTCCTAAGAAAGAG
 TGACTGGAATGGTTGACAAAAGGACGCTTGAAAAGTATGAAAGAGAAGCTAAAGAGAAAAACAGAGAAAC
 TTGGTACTTGTCTTGGGCCTTAGACACAAATCAGGAAGAACGAGACAAGGGTAAAACAGTAGAAGTGGGT
 CGTGCCTATTTTGAACCGAAAAGAAGCATTTCACAATCTAGATGCCCTGGCCACAAGAGTTTGTCC
 CAAATATGATTGGTGGTCCCTCAAGCTGATTTGGCTGTGCTGGTAATCTCAGCCAGGAAAAGGAGAGTT
 TGAAACTGGATTTGAAAAGGAGGACAGACAAGAGAACATGCAATGTTGGCAAAGACAGCAGGTGTAAAA
 CACCTAATTGTGCTAATTAATAAGATGGATGATCCAACAGTAAATTGGAGCAATGAGAGATATGAAGAAT
 GTAAGGAGAACTAGTGCCATTTTGA AAAAAGTTGGCTTCAATCCCAAAAAGGACATTCATTTATGCC
 CTGCTCAGGACTTACTGGAGCAAATCTCAAAGAGCAGTCGGATTCTGTCTTGGTACATTGGATTACCG
 TTTATTCCATATCTGGATAATTTGCCGAACCTCAATAGATCAGTTGATGGACCAATCAGGCTGCCAATTG
 TGGATAAGTACAAGGATATGGGCACTGTGGTCTGGGAAAGCTGGAATCAGGATCTATTTGTAAAGGCCA
 GCAGCTTGTGATGATGCCAAACAAGCACAACTGGAAGTCTTGGAACTTTCCGATGATGTAGAGACT
 GATACCGTAGCCCGAGTAAAACCTCAAATCAGACTGAAAGGAATTGAAGAAGAGGAGATTCTCCAG
 GGTTTATACTTTGTGATCCTAATAATCTTTGTCATTCTGGACGCACATTTGATGCCCAGATAGTGATTAT
 AGAGCACAAATCCATCATCTGCCAGGCTATAATGCGGTGCTGCATATTCATACCTGTATTGAGGAGGTG
 GAAATAACAGCCTTAATCTGCTTGGTAGACAAAAAATCAGGAGAAAAAAGTAAGACCCGACCCCGTTTTG
 TCAAACAAGATCAAGTATGCATTGCTCGCTTAAGGACAGCAGGAACCATCTGCCTTGAGACCTTTAAGA
 CTTCCCTCAGATGGGTCGTTTACCTTAAGAGATGAGGGTAAGACCATTGCAATTGGAAGTTCTGAAA
 CTGTTCCAGAGAAAGAC

ACGCGTACGCGGCGCGCTCGAG – GFP Tag – GTTTAA

Protein Sequence:

>RG226048 representing NM_001130006
 Red=Cloning site Green=Tags(s)

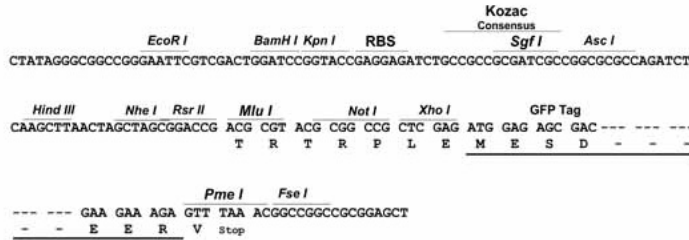
MDPGSGGGGGGGGGSSSSSDSAPDCWDQADMEAPGPGCGGGGSLAAAAEAQRENLSAAF SRQLN
 VNAKPFVFPNVHAAEFVPSFLRGPAA PPPAGGAANNHGAGSGAGGRAAPVESSQEEQSLCEGSNSAVSME
 LSEPIENGETEMSP EESWEHKKEI SEAEPPGGSLGDGRPPEESAHEMEEEEEEIPKPKSVVAPPGAPKKE
 HVNVVFI GHVDAGKSTIGGQIMYLTGMVDKRTLEKYEREAKEKNRETWYLSWALDTNQEERDKGKTVEVG
 RAYFETEKKHFTILDAPGHKSFVPMNIGGASQADLAVLVISARKGEFETGFEEKGQTREHAMLAKTAGVK
 HLIIVL INKMDDPTV NWSNEREYEECKELVPFLKKVGFNPKKDIHFMPCSGLTGANLKEQSDFCPWYIGLP
 FIPYLDNLPNFNRSVDGPIRLPIVDKYKDMGTVVVLGKLESGSICKGQQLVMMPNKHNV EVLGILSDDVET
 DTVAPGENLKI RLKGI EEEEEILPGFILCDPNNLCHSGRTFDAQIVII EHKSIICPGYNAVLIHTCIEEV
 EITALICLV DKKSGEKSKTRPRFVKQDQVCIARLRTAGTICLETFKDFPQMGRFTLRDEGKTI AIGKVLK
 LVPEKD

TRTRPLE – GFP Tag – V

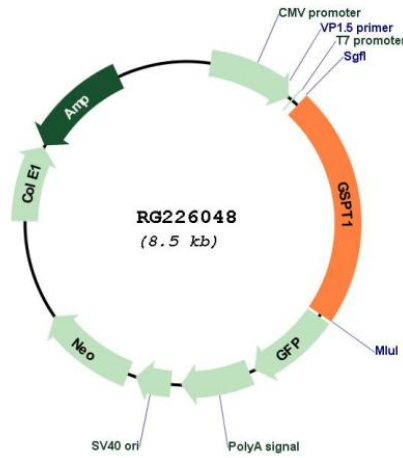
Restriction Sites: Sgfl-MluI

Cloning Scheme:

Cloning sites used for ORF Shutting:



Plasmid Map:



ACCN: NM_001130006

ORF Size: 1908 bp

OTI Disclaimer:	The molecular sequence of this clone aligns with the gene accession number as a point of reference only. However, individual transcript sequences of the same gene can differ through naturally occurring variations (e.g. polymorphisms), each with its own valid existence. This clone is substantially in agreement with the reference, but a complete review of all prevailing variants is recommended prior to use. More info
OTI Annotation:	This clone was engineered to express the complete ORF with an expression tag. Expression varies depending on the nature of the gene.
Components:	The ORF clone is ion-exchange column purified and shipped in a 2D barcoded Matrix tube containing 10ug of transfection-ready, dried plasmid DNA (reconstitute with 100 ul of water).
Reconstitution Method:	<ol style="list-style-type: none"> 1. Centrifuge at 5,000xg for 5min. 2. Carefully open the tube and add 100ul of sterile water to dissolve the DNA. 3. Close the tube and incubate for 10 minutes at room temperature. 4. Briefly vortex the tube and then do a quick spin (less than 5000xg) to concentrate the liquid at the bottom. 5. Store the suspended plasmid at -20°C. The DNA is stable for at least one year from date of shipping when stored at -20°C.
RefSeq:	NM_001130006.1 , NP_001123478.1
RefSeq Size:	7166 bp
RefSeq ORF:	1911 bp
Locus ID:	2935
UniProt ID:	P15170
Cytogenetics:	16p13.13
Protein Families:	Transmembrane
Gene Summary:	Involved in translation termination in response to the termination codons UAA, UAG and UGA (By similarity). Stimulates the activity of ETF1 (By similarity). Involved in regulation of mammalian cell growth (PubMed:2511002). Component of the transient SURF complex which recruits UPF1 to stalled ribosomes in the context of nonsense-mediated decay (NMD) of mRNAs containing premature stop codons (PubMed:24486019).[UniProtKB/Swiss-Prot Function]