

Product datasheet for **RG226042**

ZNF195 (NM_001130520) Human Tagged ORF Clone

Product data:

Product Type:	Expression Plasmids
Product Name:	ZNF195 (NM_001130520) Human Tagged ORF Clone
Tag:	TurboGFP
Symbol:	ZNF195
Synonyms:	HRF1; ZNFP104
Mammalian Cell Selection:	Neomycin
Vector:	pCMV6-AC-GFP (PS100010)
E. coli Selection:	Ampicillin (100 ug/mL)



[View online »](#)

ORF Nucleotide Sequence:

>RG226042 ORF sequence, **codon optimized**.
 Due to the complexity of NM_001130520, the ORF clone is codon optimized for mammalian Expression.
 The nucleotide sequence differs from the reference sequence, yet the amino acid sequence remains identical.

Red=Cloning site Blue=ORF Green=Tags(s)

TTTTGTAATACGACTCACTATAGGGCGGCCGGAATTCGTCGACTGGATCCGGTACCGAGGAGATCTGCC
 GCC**CGATCGCC**

ATGACTTTGCTGACCTTTTCGGGATGTCGCCATTGAATTCAGTCTGGAAGAATGGAAGTGCCTGGATCTGG
 CTCAGCAAACCTTGACAGGGATGTAATGCTGGAAAATACCGCAACCTGTTTCAGTGTGGGCTGACCGT
 GTGTAAGCCAGGGCTCATTACATGTCTTGAACAGCGGAAGGAGCCCTGGAATGTGAAACGCCAAGAGGCT
 GCCGACGGGCATCCAGAGATGGGCTTCCATCACGCAACCCAGGCTTGTCTCGAACTCCTGGGCTCATCTG
 ACCTGCCCGCTAGCGCGTCTCAGTCTGCTGGAATCACGGGGTGAACCATCGGGCTCAGCCTGGCCTGAA
 CGTTAGTGTAGACAAATTCACCGCTTGTGTAGCCCTGGGGTCTGCAAACCTGTGAAGTGGTTTCTGGAG
 TTTTCGCTGATTTTTAGTCTGGCCATGAGCTCACACTTCACTCAGGACCTTTGCCTGAGCAGGGAATTC
 AGGACGCATTTCCTAAGCGGATCCTCCGGGTTACGGGAATGTGGGCTGGACAACCTTTACCTGCGCAA
 GGATTGGGAATCTTTGGACGAATGTAAGCTGCAGAAGGATTACAACGGCCTGAACCAGTGCTCTTCTACC
 ACTCATAGTAAGATCTTCCAGTATAACAAGTACGTAATAAATCTTCGATAACTTTTCTAATTGCACCGCA
 GAAATATATCCAACCCGGTGAAGCCCTTTAAATGTCAGGAATGCGGGAAGTCATTTTCAGATGCTCAG
 TTTTCTCACAGAACACCAAAAAATCCACACCCGCAAGAAGTTTCAGAAGTGCAGGAGTGCAGGGAAGACC
 TTTATCCAGTGCTCCCATTTTACTGAGCCTGAAAATATTGACACAGGTGAGAAGCCATATAAATGTCAGG
 AGTGCAATAATGTCATCAAGACCTGTTCTGTGCTGACCAAGAACAGGATTTACGCAGGAGGAGAACACTA
 CCGCTGTGAGGAGTTCGGGAAAGTGTAAACCAGTGCAGCCACCTTACGGAACACGAGCATGGCACTGAG
 GAAAAGCCCTGCAAGTATGAAGAGTGCAGCAGTGTTCATCTCCTGTTTCATCCCTGAGTAACCAGCAGA
 TGATCCTGGCCGGCGAGAAATTGAGCAAATGCGAAACCTGGTACAAGGATTCAACCACTCACCTAATCC
 TTCTAAACATCAAAGAAATGAGATAGGAGGAAAACCTTTCAAGTGTGAGGAATGTGATTCCATTTTTAAA
 TGGTTTAGTGACCTGACTAAGCACAAGCGGATTCACACTGGCGAGAAGCCATAACAAGTGTGATGAGTGCG
 GGAAGGCCTACACTCAAAGTTCTCATCTCTCAGAACATCGCCGATTACACCGGCGAGAAGCCCTACCA
 GTGTGAGGAATGCGGCAAGGTATTCAGGACCTGTAGCAGCCTCTCAAATCACAAGAGGACCCACAGTGAG
 GAGAAGCCATATACCTGTGAGGAGTGCAGGAAACATATTTAAGCAGCTTAGCGACCTGACCAACACAAGA
 AGACCCATACAGGAGAGAAACCTTACAAGTGCAGCAATGCGGAAAAAATTCACACAGTGCATCCAATCT
 GATCGTTCACAAGAGAATACACACTGGCGAGAAGCCCTACAAGTGCAGGAGTGTGGTAGGGTATTCATG
 TGGTTCTCCGACATAACAAGCACAAGAAGACTCATACTGGAGAGAAACCTATAAGTGTGACGAGTGCG
 GTAAAACTTTACGCAGAGTTCCAATCTGATCGTGCATAAGCGCATACATACCGGAGAGAAACCATACAA
 GTGCGAGAAATGCGGAAAAGCCTTTACCCAGTTTAGCCACCTGACAGTGCATGAGAGCATCCATACC

ACGCGTACGCGGCCGCTCGAG – GFP Tag – GTTTAA

Protein Sequence: >RG226042 representing NM_001130520
 Red=Cloning site Green=Tags(s)

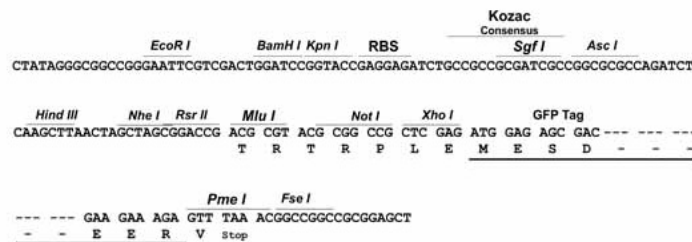
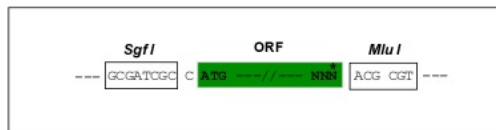
MTLLTFRDVAIEFSLSEEWKCLDLAQQNL YRDVMLENYRNLF SVGLTVCKPGLITCLEQRKEPWNVKRQEA
 ADGHPMEGFHHATQACLELLGSSDLPASASQSAGITGVNHRAQPGLNVSDKFTALCSPGVLQTVKWFLE
 FRCIFSLAMSSHFTQDLLPEQGIQDAFPKRILRGYGNCGLDNL YLRKDWESLDECKLQKDYNGLNQCSST
 THSKIFQYNKYVKIFDNF SNLHRRNISNTGEKPFKQCCEGKSFQMLSFLTEHQKIHTGKKFKQCGECGKT
 F IQCSHFTEPENIDTGEKPYKQCENNVIKTCSVLTKNRIYAGGEHYRCEEF GKVFNQCSHLTEHEHGTE
 EKPCYEECCSSVFI SCSSLSNQQMILAGEKLSKCETWYKGFNHSNPNPSKHQRNEIGGKPFKCEECDSIFK
 WFDLTKHKRIHTGEKPYKDECGKAYTQSSHLSHRRHTGEKPYQCEECGKVFRTCSSLSNHKRTHSE
 EKPYTCEECGNI FKQLSDLTKHKKTHTGEKPYKDECGKNFTQSSNLIVHKRIHTGEKPYKCEECGRVFM
 WFSIDITKHKKTHTGEKPYKDECGKNFTQSSNLIVHKRIHTGEKPYKCEKCGKAFQFSLTVHESIHT

TRTRPLE – GFP Tag – V

Restriction Sites: SgfI-MluI

Cloning Scheme:

Cloning sites used for ORF Shutting:



ACCN: NM_001130520

ORF Size: 1887 bp

OTI Disclaimer: The molecular sequence of this clone aligns with the gene accession number as a point of reference only. However, individual transcript sequences of the same gene can differ through naturally occurring variations (e.g. polymorphisms), each with its own valid existence. This clone is substantially in agreement with the reference, but a complete review of all prevailing variants is recommended prior to use. [More info](#)

OTI Annotation: This clone was engineered to express the complete ORF with an expression tag. Expression varies depending on the nature of the gene.

Components: The ORF clone is ion-exchange column purified and shipped in a 2D barcoded Matrix tube containing 10ug of transfection-ready, dried plasmid DNA (reconstitute with 100 ul of water).

Reconstitution Method:

1. Centrifuge at 5,000xg for 5min.
2. Carefully open the tube and add 100ul of sterile water to dissolve the DNA.
3. Close the tube and incubate for 10 minutes at room temperature.
4. Briefly vortex the tube and then do a quick spin (less than 5000xg) to concentrate the liquid at the bottom.
5. Store the suspended plasmid at -20°C. The DNA is stable for at least one year from date of shipping when stored at -20°C.

RefSeq: [NM_001130520.1](#), [NP_001123992.1](#)

RefSeq Size: 3187 bp

RefSeq ORF: 1890 bp

Locus ID: 7748

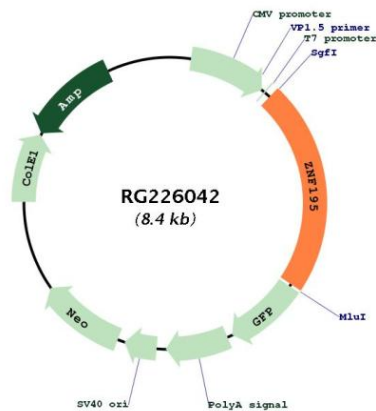
UniProt ID: [O14628](#)

Cytogenetics: 11p15.4

Protein Families: Transcription Factors

Gene Summary: This gene encodes a protein belonging to the Krueppel C2H2-type zinc-finger protein family. These family members are transcription factors that are implicated in a variety of cellular processes. This gene is located near the centromeric border of chromosome 11p15.5, next to an imprinted domain that is associated with maternal-specific loss of heterozygosity in Wilms' tumors. Alternative splicing results in multiple transcript variants. [provided by RefSeq, Feb 2012]

Product images:



Circular map for RG226042