

## Product datasheet for **RG226020**

### **SYK (NM\_001135052) Human Tagged ORF Clone**

#### **Product data:**

Product Type:	Expression Plasmids
Product Name:	SYK (NM_001135052) Human Tagged ORF Clone
Tag:	TurboGFP
Symbol:	SYK
Synonyms:	IMD82; p72-Syk
Mammalian Cell Selection:	Neomycin
Vector:	pCMV6-AC-GFP (PS100010)
E. coli Selection:	Ampicillin (100 ug/mL)



[View online »](#)

**ORF Nucleotide Sequence:**

>RG226020 representing NM\_001135052  
 Red=Cloning site Blue=ORF Green=Tags(s)

TTTTGTAATACGACTCACTATAGGGCGGCCGGAATTCGTCGACTGGATCCGGTACCGAGGAGATCTGCC  
 GCC**CGCATCGCC**

ATGGCCAGCAGCGGCATGGCTGACAGCGCCAACCACCTGCCCTTCTTTTTCGGCAACATCACCCGGGAGG  
 AGGCAGAAGATTACCTGGTCCAGGGGGCATGAGTGATGGGCTTTATTTGCTGCGCCAGAGCCGCAACTA  
 CCTGGGTGGCTTCGCCCTGTCCGTGGCCACGGGAGGAAGGCACACCACTACACCATCGAGCGGGAGCTG  
 AATGGCACCTACGCCATCGCCGGTGGCAGGACCCATGCCAGCCCCGCGACCTCTGCCACTACCACTCCC  
 AGGAGTCTGATGGCTGGTCTGCCTCCTCAAGAAGCCCTCAACCGGCCCAAGGGTGCAGCCCAAGAC  
 TGGGCCCTTTGAGGATTTGAAGGAAAACCTCATCAGGGAATATGTGAAGCAGACATGGAACCTGCAGGT  
 CAGGCTCTGGAGCAGGCCATCATCAGTCAGAAGCCTCAGCTGGAGAAGCTGATCGCTACCACAGCCCATG  
 AAAAAATGCCTTGGTTCCATGAAAAATCTCTCGGAAGAATCTGAGCAAATGTCCTGATAGGATCAA  
 GACAAATGAAAGTTCCATCGAGCCAGAGACAACAACGGCTCTACGCCCTGTGCCTGCTGCACGAA  
 GGGAAAGTGTGCACTATCGCATCGACAAGACAGAGGAAGCTCTCCATCCCCGAGGAAAGAAGT  
 TCGACACGCTCTGGCAGCTAGTCGAGCATTATTCTTATAAAGCAGATGGTTTGTTAAGAGTCTTACTGT  
 CCCATGTCAAAAAATCGGCACACAGGAAATGTTAATTTTGGAGGCCGTCCACAACCTCCAGTTCCCAT  
 CCTGCGTCTCCCTGCCAAGGGAACCGGCAAGAGAGTACTGTGTCATTCAATCCGTATGAGCCAGAAC  
 TTGCACCTGGGCTGCAGACAAAGGCCCCAGAGAGAAGCCCTACCCATGGACACAGAGGTGTACGAGAG  
 CCCCTACGCGGACCCCGAGGAGATCAGGCCAAGGAGGTTTACCTGGACCGAAAGCTGCTGACGCTGGAA  
 GACAAAGAAGTGGGCTCTGGTAATTTTGAAGCTGTGAAAAAGGGCTACTACCAAATGAAAAAGTTGTGA  
 AAACCGTGGCTGTGAAAAACTGAAAAACGAGGCCAATGACCCCGCTCTTAAAGATGAGTTATTAGCAGA  
 AGCAAATGTCATGCAGCAGCTGGACAACCCGTACATCGTGGGATGATCGGGATATGCGAGGCCGAGTCC  
 TGGATGCTGGTTATGGAGATGGCAGAATTGGTCCCCTCAATAAGTATTTGCAGCAGAACAGACATGTCA  
 AGGATAAGAACATCATAGAACTGGTTCATCAGGTTTCCATGGGCATGAAGTACTTGGAGGAGAGCAATTT  
 TGTGCACAGAGATCTGGCTGCAAGAAATGTTGCTAGTTACCCAACATTACGCCAAGATCAGTGATTTT  
 GGACTTTCCAAGCACTGCGTGTGATGAAAACTACTACAAGGCCAGACCCATGGAAAGTGGCCTGTCA  
 AGTGGTACGCTCCGAATGCATCACTACTACAAGTTCTCCAGCAAAGCGATGCTGGAGCTTTGGAGT  
 GTTGATGTGGGAAGCATTCTCCTATGGCAGAAGCCATATCGAGGGATGAAAGGAAGTGAAGTACCCTG  
 ATGTTAGAAAAGGAGAGCGGATGGGTGCCCTGCAGGTGTCCAAGAGAGATGTACGATCTCATGAATC  
 TGTGCTGGACATACGATGTGAAAAACAGGCCCGATTTCGACAGCTGGAAGTGGCCTGCCCAATTACTA  
 CTATGACGTGGTGAAC

**ACGCGTACGCGGCCGCTCGAG** – GFP Tag – GTTTAA

**Protein Sequence:**

>RG226020 representing NM\_001135052  
 Red=Cloning site Green=Tags(s)

MASSGMADSANHLPFFFGNITREEAEDYLQGGMSDGLYLLRQSRNYLGGFALVAHGRKAHHTIEREL  
 NGTYAIAGGRTHASPADLCHYHSQESDGLVCLLKPFNRPQGVQPKTGPFDLKENLIREYVKQTWNLQG  
 QALEQAIISQKPQLEKLIATTAHEKMPWFHGKISREESEQIVLIGSKTNGKFLIRARDNNGSYALCLLHE  
 GKVLHYRIDKDKTGKLSIPEGKKFDLWQLVEHYSYKADGLLRVLTVPCKIGTQGNVNFGRPQLPGSH  
 PASSPAQGNRQESTVSFNPEPELAPWAADKGPQREALPMDTEVYESPYADPEEIRPKEVYLDRLKLLTLE  
 DKELGSGNFGTVKKGYYQMKKVVKTVAVKILKNEANDPALKDELLEAEANVMQQLDNPYIVRMIGICEAES  
 WMLVMEAEELGPLNKYLQQRHVKDKNIIELVHQVSMGMKYLEESNFBVHRDLAARNVLLVTQHYAKISDF  
 GLSKALRADENYYKAQTHGKWPVKWYAPECINYYKFSKSDVWSFGVLMWEAFSYGQKPYRGMKGSEVTA  
 MLEKGERMGPAGCPREMYDLMNLCWTYDVENRPGFAAVELRLRNYYVDVFN

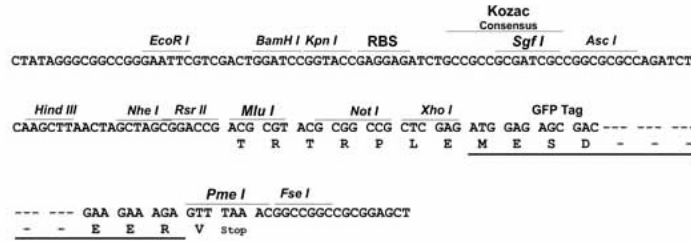
**TRTRPLE** – GFP Tag – V

**Restriction Sites:**

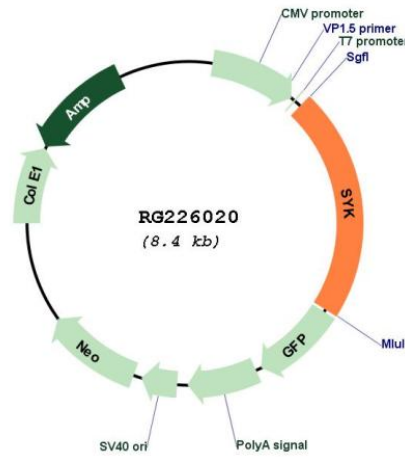
SgfI-MluI

Cloning Scheme:

Cloning sites used for ORF Shutting:



Plasmid Map:



ACCN: NM\_001135052  
 ORF Size: 1836 bp

<b>OTI Disclaimer:</b>	The molecular sequence of this clone aligns with the gene accession number as a point of reference only. However, individual transcript sequences of the same gene can differ through naturally occurring variations (e.g. polymorphisms), each with its own valid existence. This clone is substantially in agreement with the reference, but a complete review of all prevailing variants is recommended prior to use. <a href="#">More info</a>
<b>OTI Annotation:</b>	This clone was engineered to express the complete ORF with an expression tag. Expression varies depending on the nature of the gene.
<b>Components:</b>	The ORF clone is ion-exchange column purified and shipped in a 2D barcoded Matrix tube containing 10ug of transfection-ready, dried plasmid DNA (reconstitute with 100 ul of water).
<b>Reconstitution Method:</b>	<ol style="list-style-type: none"><li>1. Centrifuge at 5,000xg for 5min.</li><li>2. Carefully open the tube and add 100ul of sterile water to dissolve the DNA.</li><li>3. Close the tube and incubate for 10 minutes at room temperature.</li><li>4. Briefly vortex the tube and then do a quick spin (less than 5000xg) to concentrate the liquid at the bottom.</li><li>5. Store the suspended plasmid at -20°C. The DNA is stable for at least one year from date of shipping when stored at -20°C.</li></ol>
<b>RefSeq:</b>	<a href="#">NM_001135052.4</a>
<b>RefSeq Size:</b>	5012 bp
<b>RefSeq ORF:</b>	1839 bp
<b>Locus ID:</b>	6850
<b>UniProt ID:</b>	<a href="#">P43405</a>
<b>Cytogenetics:</b>	9q22.2
<b>Protein Families:</b>	Druggable Genome, Protein Kinase
<b>Protein Pathways:</b>	B cell receptor signaling pathway, Fc epsilon RI signaling pathway, Fc gamma R-mediated phagocytosis, Natural killer cell mediated cytotoxicity
<b>Gene Summary:</b>	This gene encodes a member of the family of non-receptor type Tyr protein kinases. This protein is widely expressed in hematopoietic cells and is involved in coupling activated immunoreceptors to downstream signaling events that mediate diverse cellular responses, including proliferation, differentiation, and phagocytosis. It is thought to be a modulator of epithelial cell growth and a potential tumour suppressor in human breast carcinomas. Alternatively spliced transcript variants encoding different isoforms have been found for this gene. [provided by RefSeq, Mar 2010]