

Product datasheet for **RG226018**

AHCYL2 (NM_001130720) Human Tagged ORF Clone

Product data:

Product Type:	Expression Plasmids
Product Name:	AHCYL2 (NM_001130720) Human Tagged ORF Clone
Tag:	TurboGFP
Symbol:	AHCYL2
Synonyms:	ADOHCYASE3; IRBIT2
Mammalian Cell Selection:	Neomycin
Vector:	pCMV6-AC-GFP (PS100010)
E. coli Selection:	Ampicillin (100 ug/mL)



[View online »](#)

ORF Nucleotide Sequence:

>RG226018 representing NM_001130720
 Red=Cloning site Blue=ORF Green=Tags(s)

TTTTGTAATACGACTCACTATAGGGCGGCCGGAATTCGTCGACTGGATCCGGTACCGAGGAGATCTGCC
 GCC**CGCATCGCC**

ATGTCGGTGCAGGTTGTGTCAGCCGCGGCTGCCGCCAAGGTGCCTGAGGTGGAGCTGAAGGACCTGAGCC
 CCTCCGAGGCGGAGTCGCAACTAGGACTGAGCACGGCCGCGTGGGCGCCATGGCCCCCGGCGGGCGG
 TGGAGACCCTGAGGCTCCAGCTCCCGCCGCGGAGCGGCCCGGTCCCGGCCGGGCTCGGGGCCCGCC
 GCCGCTCTCAGCCCCGCCGCGGAAGGTGCCTCAGGCGTCGGCCATGAAGCGGAGCGACCCACATCACC
 AGCACCAGCGGCACCGCAGCGGCGGAGGCCCTGGTCAGCCCCGACGGCACCGTCACCGAGGCGCCGCG
 CACAGTCAAGAAGATCCAGTTTGTCTGACCAGAAGCAAGAATTCAACAAACGTCCCACCAAATTTGGACGT
 CGCTCTTTGTCTCGTTCCATTTCTCAGTCATCTACTGACAGCTACAGCTCAGCGGCTTCATATACAGATA
 GCTCTGATGATGAGACATCGCCAGGGACAAGCAGCAAAAGAAGCTAAGGGAAGCAGTGACTTCTGTGT
 TAAGAACATCAACAGGCAGAGTTTGGACGAAGAGAAATTGAAATTTGCTGAACAAGAAATGCCTGCATTG
 ATGGCTTTGAGGAAGAGAGCTCAAGGAGAAAAGCCTTTGGCTGGAGCCAAAATCGTGGGTTGCACACACA
 TCACTGCTCAGACTGCTGTGCTTATGAAACTCTGGGTGCTCTGGGGGCCAGTGCCGATGGGCTGCCTG
 CAACATCTATTCCACTCTCAATGAAGTGGCTGCTGCTCTAGCAGAAAGTGGATTTCTGTTTTGCTCGG
 AAGGGAGAGTCAGAAGATGACTTTTGGTGGTGTATCGATAGATGTGTGAATGTGGAGGGCTGGCAGCCAA
 ACATGATCTTGGATGATGGAGGGGATCTTACCCACTGGATTTATAAAAAGTATCCCAACATGTTTAAAGAA
 AATCAAGGCATAGTAGAGGAGAGTGTACTGGAGTTCACAGGCTGTACCAACTGTCAAAGCTGGGAAG
 CTGTGTGTTCCAGCCATGAATGTCAATGACTCAGTCACCAAACAGAAATTTGACAACCTCTACTGTTGCC
 GTGAATCAATTTGATGGACTTAAAAGGACAACAGACATGATGTTTGGTGGAAAGCAAGTAGTCTGTG
 TGGCTATGGAGAGGTGGGAAAGGGTGTGTGCTGCCCTGAAAGCCATGGGCTCCATTGTGTATGTAAC
 GAAATTGACCCCATCTGTGCCCTGCAAGCCTGTATGGATGGATTTGACTGGTGAATTAATGAGGTCA
 TCCGACAAGTGGACATTGTTATTACCTGTACAGGTAACAAGAATGTGGTAACCAGAGAGCACTTGGACCG
 TATGAAGAATAGCTGCATCGTTTGAACATGGGACATTCCAACACAGAGATTGACGTGGCGAGTCTGCGG
 ACACCAGAAGTACCTGGGAGCGAGTGAAGTCTCAAGTTGACCATGTGATATGGCCTGATGGCAAGAGGA
 TAGTACTGCTGGCAGAGGGCCGCTGCTGAACCTTAGCTGCTCCACAGTGCCTACATTTGTCTCTCAAT
 CACTGCTACTACTCAGGCTCTTGCCTTGATAGAGCTTTACAATGCTCCTGAGGTCGCTATAAGCAGGAT
 GTCTACCTGTTGCCAAGAAGATGGATGAGTATGTGGCCAGCCTACACCTGCCTACCTTTGATGCCCACT
 TGACAGAGCTGACAGATGAACAGGCCAAGTATCTGGGACTCAACAAGAATGGGCCCTTCAAGCCTAATTA
 CTACAGGTAT

ACGCGTACGCGGCCGCTCGAG - GFP Tag - GTTTAA

Protein Sequence:

>RG226018 representing NM_001130720
 Red=Cloning site Green=Tags(s)

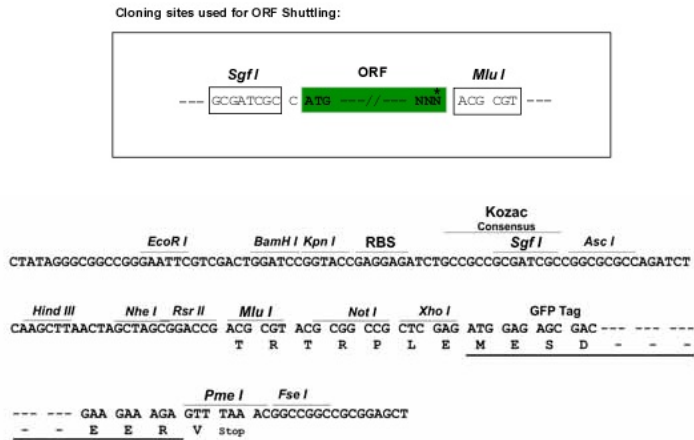
MSVQVVSAAAAQVPEVELKDLSPSEAESQLGLSTAAVGAMAPPAGGGDPEAPAPAAERPPVPGPGSGPA
 AALSPAAGKVPQASAMKRSPPHHQHRHRDGGREALVSPDGTVTEAPRTVKKIQFADQKQEFNKRPTKIGR
 RSLRSISQSSTDSYSSAASYTDSDDETSPPDKQKNSKGSDFCVKNIKQAEFGRREIEIAEQEMPAL
 MALRKRAQGEKPLAGAKIVGCTHITAQTAVLMETLGALGAQCRWAACNIYSTLNEVAAAALAESGFPVFAW
 KGESEDDFWCIDRCVNVWQPNMILDDGGDLTHWIYKYPNMFKKIKGIVEESVTGVHRLYQLSKAGK
 LCVPMNVNDSVTQKFDNL YCCRESILDGLKRTDMMFGGKQVVVCGYGEVKGCCAAALKAMGSIYVVT
 EIDPICALQACMDGFRVLKLNVEIRQVDIVITCTGNKNVVTREHLDRMKNSCIVCNMGSNTEIDVASLR
 TPELTWERVRSQVDHVIWPDGKRIVLLAEGRLLNLSCSTVPTFVLSITATTQALALIELYNAPEGRYKQD
 VYLLPKKMDEYVASLHLPFD AHL TELTDEQAKYGLNKNPFPKPNYYRY

TRTRPLE - GFP Tag - V

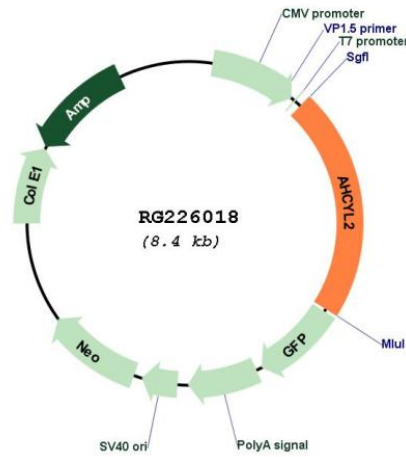
Restriction Sites:

SgfI-MluI

Cloning Scheme:



Plasmid Map:



ACCN: NM_001130720

ORF Size: 1830 bp

OTI Disclaimer:	The molecular sequence of this clone aligns with the gene accession number as a point of reference only. However, individual transcript sequences of the same gene can differ through naturally occurring variations (e.g. polymorphisms), each with its own valid existence. This clone is substantially in agreement with the reference, but a complete review of all prevailing variants is recommended prior to use. More info
OTI Annotation:	This clone was engineered to express the complete ORF with an expression tag. Expression varies depending on the nature of the gene.
Components:	The ORF clone is ion-exchange column purified and shipped in a 2D barcoded Matrix tube containing 10ug of transfection-ready, dried plasmid DNA (reconstitute with 100 ul of water).
Reconstitution Method:	<ol style="list-style-type: none"> 1. Centrifuge at 5,000xg for 5min. 2. Carefully open the tube and add 100ul of sterile water to dissolve the DNA. 3. Close the tube and incubate for 10 minutes at room temperature. 4. Briefly vortex the tube and then do a quick spin (less than 5000xg) to concentrate the liquid at the bottom. 5. Store the suspended plasmid at -20°C. The DNA is stable for at least one year from date of shipping when stored at -20°C.
RefSeq:	NM_001130720.3
RefSeq Size:	5067 bp
RefSeq ORF:	1833 bp
Locus ID:	23382
UniProt ID:	Q96HN2
Cytogenetics:	7q32.1
Protein Families:	Druggable Genome
Protein Pathways:	Cysteine and methionine metabolism, Metabolic pathways, Selenoamino acid metabolism
Gene Summary:	The protein encoded by this gene acts as a homotetramer and may be involved in the conversion of S-adenosyl-L-homocysteine to L-homocysteine and adenosine. Several transcript variants encoding different isoforms have been found for this gene. [provided by RefSeq, Jun 2011]