

## Product datasheet for **RG226008**

### EPLIN (LIMA1) (NM\_001113547) Human Tagged ORF Clone

#### Product data:

Product Type:	Expression Plasmids
Product Name:	EPLIN (LIMA1) (NM_001113547) Human Tagged ORF Clone
Tag:	TurboGFP
Symbol:	LIMA1
Synonyms:	EPLIN; LDLCQ8; SREBP3
Mammalian Cell Selection:	Neomycin
Vector:	pCMV6-AC-GFP (PS100010)
E. coli Selection:	Ampicillin (100 ug/mL)



[View online »](#)

**ORF Nucleotide Sequence:**

>RG226008 representing NM\_001113547  
 Red=Cloning site Blue=ORF Green=Tags(s)

TTTTGTAATACGACTCACTATAGGGCGGCCGGGAATTCGTCGACTGGATCCGGTACCGAGGAGATCTGCC  
 GCC**CGGATCGCC**

ATGAAAAATTGTCTAGGAGAATCCAGGCATGAAGTAGAAAAATCAGAAATCAGTAAAACACAGATGCTT  
 CGGGCAAAATAGAGAAATATAATGTTCCGCTGAACAGGCTTAAGATGATGTTTGAGAAAGGTGAACCAAC  
 TCAAATAAGATTCTCCGGGCCAAAGCCGAAAGTGAAGTGAAGGAAGATCTCTGAAAAACGCTATTCT  
 CTAGATGACCTGGAAATAGGCCAGGTCAGTTGTCATCTTCTACATTTGACTCGGAGAAAAATGAGAGTA  
 GACGAAATCTGGAACCTCCACGCCTCTCAGAAACCTCTATAAAGGATCGAATGGCCAAGTACCAGGCAGC  
 TGTGTCCAAACAAAGCAGCTCAACCAACTATACAAATGAGCTGAAAGCCAGTGGTGGCGAAATCAAATT  
 CATAAAATGGAGCAAAGGAGAATGTGCCCCAGGTCCTGAGGTCTGCATCACCCATCAGGAAGGGGAAA  
 AGATTTCTGCAATGAGAATAGCCTGGCAGTCCGTTCCACCCCTGCCGAAGATGACTCCCAGGTGACTC  
 CCAGGTTAAGAGTGAGGTTCAACAGCCTGTCCATCCCAAGCCACTAAGTCCAGATTCCAGAGCCTCCAGT  
 CTTTCTGAAAGTTCTCCTCCCAAAGCAATGAAGAAGTTTCAGGCACCTGCAAGAGAGACCTGCGTGGAA  
 GTCAGAAGACAGTCTATCCAATGGAGCGTCTCTTGGCCAACCAGCAGGTGTTTCACATCAGCTGTTCCG  
 TTGCTCCTATTGCAACAACAACTCAGTCTAGGAACATATGCATCTTTACATGGAAGAATCTATTGTAAG  
 CCTCACTTCAATCAACTCTTTAAATCTAAGGGCAACTATGATGAAGGCTTTGGGCACAGACCACACAAGG  
 ATCTATGGGCAAGCAAAAATGAAACGAAGAGATTTTGGAGAGACCAGCCAGCTTGCAATGCAAGGGA  
 GACCCCTCACAGCCAGGGTGAAGATGCCCTATTGCTAAGGTGGGTGCTGCTGCAAGTATGGAA  
 GCCAAGGCTCCTCTCAGCAGGAGAAGGAAGACAAGCCAGCTGAAACCAAGAAGCTGAGGATCGCCTGGC  
 CACCCCACTGAACTTGAAGTTCAGGAAGTGCCTTGGAGGAAGGGATCAAAATGTCAAAGCCAAATG  
 GCCTCCTGAAGACGAAATCAGCAAGCCGAAGTTCCTGAGGATGTCGATCTAGATCTGAAGAAGCTAAGA  
 CGATCTTCTTCACTGAAGGAAAGAGCCGCCATTCACTGTAGCAGCTTCATTTCAAAGCACCTCTGTCA  
 AGAGCCCAAAAAGTGTGTCCCACTATCAGGAAAGGCTGGAGCATGTCAGAGCAGAGTGAAGAGTCTGT  
 GGGTGAAGAGTTGCAGAAAGGAAACAAGTGGAAAATGCCAAGGCTTCTAAGAAGAATGGGAATGTGGGA  
 AAAACAACCTGGCAAAACAAGAATCTAAAGGAGAGACAGGGAAGAGAAGTAAGGAAGGTGATGTTTGG  
 AGATGGAGAATGAGAATCTGTAGAAAATGGTGCAGACTCCGATGAAGATGATAACAGCTTCTCAAACA  
 ACAATCTCCACAAGAACCAAGTCTCTGAATTGGTCGAGTTTGTAGACAACACCTTTGCTGAAGAATTC  
 ACTACTCAGAATCAGAAATCCCAGGATGTGGAAGTCTGGGAGGGAGAAGTGGTCAAAGAGCTCTCTGTGG  
 AAGAACAGATAAAGAGAAATCGGTATTATGATGAGGATGAGGATGAAGAG

**ACGCGTACGCGGCCGCTCGAG** - GFP Tag - GTTTAA

**Protein Sequence:**

>RG226008 representing NM\_001113547  
 Red=Cloning site Green=Tags(s)

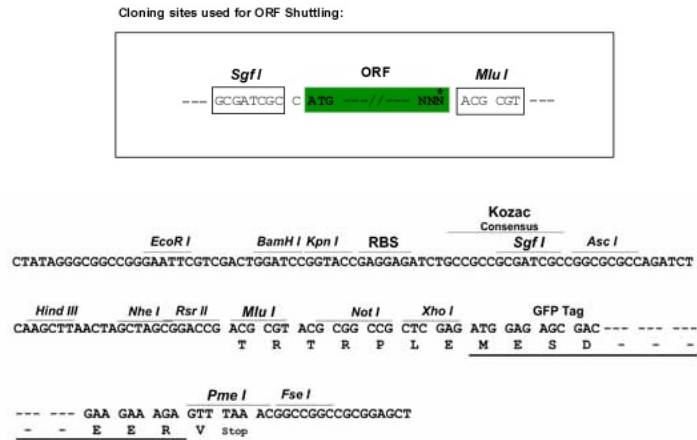
MENCLGESRHEVEKSEISENTDASGKIEKYNVPLNRLKMMFEKGEPTQTKILRAQSRSASGRKISENSYS  
 LDDLEIGPGQLSSSTFDSEKNESRRNLELPRLSETSIKDRMAKYQAAVSKQSSSTNYTNELKASGGEIKI  
 HKMEQKENVPPGPEVCITHQEGEKISANENSLAVRSTPAEDDSPGDSQVKSEVQQPVHPKPLSPDSRASS  
 LSESSPPKAMKKFQAPARETCVECQKTVYPMERLLANQQVFHISCFRCSYCNKL SLGTYASLHGRIYCK  
 PHFNQLFKSKGNVDEFGHRPHKDLWASKNENEEILERPAQLANARETPHSPGVEDAPIAKVGVLAASME  
 AKASSQEKEDKPAETKKLRIAWPPTEL GSSGSAL EGIKMSKPKWPEDEISKPEVPEDVDLCLKLR  
 RSSSLKERSRPFVAASFQSTS VKSPKTVSPPIRKGWSMSEQSEESVGGRAERKQVENAKASKKNGNVG  
 KTTWQNKESKGETGKRSKEGHSLEMENENLVENGADSDDEDDNSFLKQQSPQEPKSLNWSSFVDNTFAEEF  
 TTQNQKSQDVELWEGEVVKELSVVEQIKRNRYYDEDEEE

**TRTRPLE** - GFP Tag - V

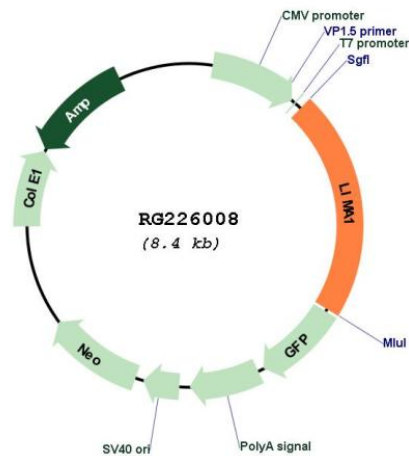
**Restriction Sites:**

Sgfl-MluI

Cloning Scheme:



Plasmid Map:



ACCN: NM\_001113547

ORF Size: 1800 bp

<b>OTI Disclaimer:</b>	The molecular sequence of this clone aligns with the gene accession number as a point of reference only. However, individual transcript sequences of the same gene can differ through naturally occurring variations (e.g. polymorphisms), each with its own valid existence. This clone is substantially in agreement with the reference, but a complete review of all prevailing variants is recommended prior to use. <a href="#">More info</a>
<b>OTI Annotation:</b>	This clone was engineered to express the complete ORF with an expression tag. Expression varies depending on the nature of the gene.
<b>Components:</b>	The ORF clone is ion-exchange column purified and shipped in a 2D barcoded Matrix tube containing 10ug of transfection-ready, dried plasmid DNA (reconstitute with 100 ul of water).
<b>Reconstitution Method:</b>	<ol style="list-style-type: none"><li>1. Centrifuge at 5,000xg for 5min.</li><li>2. Carefully open the tube and add 100ul of sterile water to dissolve the DNA.</li><li>3. Close the tube and incubate for 10 minutes at room temperature.</li><li>4. Briefly vortex the tube and then do a quick spin (less than 5000xg) to concentrate the liquid at the bottom.</li><li>5. Store the suspended plasmid at -20°C. The DNA is stable for at least one year from date of shipping when stored at -20°C.</li></ol>
<b>RefSeq:</b>	<a href="#">NM_001113547.2</a>
<b>RefSeq Size:</b>	3629 bp
<b>RefSeq ORF:</b>	1803 bp
<b>Locus ID:</b>	51474
<b>UniProt ID:</b>	<a href="#">Q9UHB6</a>
<b>Cytogenetics:</b>	12q13.12
<b>Gene Summary:</b>	This gene encodes a cytoskeleton-associated protein that inhibits actin filament depolymerization and cross-links filaments in bundles. It is downregulated in some cancer cell lines. Alternatively spliced transcript variants encoding different isoforms have been described for this gene, and expression of some of the variants maybe independently regulated. [provided by RefSeq, Aug 2011]