

## Product datasheet for **RG226000**

### **NKIAMRE (CDKL3) (NM\_001113575) Human Tagged ORF Clone**

#### **Product data:**

Product Type:	Expression Plasmids
Product Name:	NKIAMRE (CDKL3) (NM_001113575) Human Tagged ORF Clone
Tag:	TurboGFP
Symbol:	CDKL3
Synonyms:	NKIAMRE
Mammalian Cell Selection:	Neomycin
Vector:	pCMV6-AC-GFP (PS100010)
E. coli Selection:	Ampicillin (100 ug/mL)



[View online »](#)

**ORF Nucleotide Sequence:**

>RG226000 representing NM\_001113575  
 Red=Cloning site Blue=ORF Green=Tags(s)

TTTTGTAATACGACTCACTATAGGGCGGCCGGAATTCGTCGACTGGATCCGGTACCGAGGAGATCTGCC  
 GCC**CGGATCGCC**

ATGGAGATGTATGAAACCCTTGAAAAGTGGGAGAGGGAAGTTACGGAACAGTCATGAAATGTAACATA  
 AGAATACTGGGCAGATAGTGGCCATTAAGATATTTTATGAGAGACCAGAACAATCTGTCAACAAAATTGC  
 GATGAGAGAAAATAAGTTTCTAAAGCAATTTTCATCACGAAAACCTGGTCAATCTGATTGAAGTTTTAGA  
 CAGAAAAAGAAAATTCATTTGGTATTTGAATTTATTGACCACACAGTATTAGATGAGTTACAACATTATT  
 GTCATGGACTAGAGAGTAAGCGACTTAGAAAATACCTCTTCCAGATCCTTCGAGCAATTGACTATCTTCA  
 CAGTAATAATATCATTTCGAGATATAAACCTGAGAATATTTTAGTATCCAGTCAGGAATTACTAAG  
 CTCTGTGATTTGGTTTTGCACGAACACTAGCAGCTCTGGGGACATTTATACGGACTATGTGGCCACAC  
 GCTGGTATAGAGCTCCCGAATTAGTATTAAGATACTTCTTATGAAAACCTGTGGATATCTGGGCTTT  
 GGGCTGTATGATCATTGAGATGGCCACTGGAAATCCCTATCTTCTAGTATTCTGATTTGGATTTACTC  
 CATAAAATGTTTTGAAAGTGGCAATTTGTCACCTCACTTGCAGAATATCTTTTCCAAGAGCCCAATTT  
 TTGCTGGGGTAGTTCTTCTCAAGTTCAACACCCCAAAAATGCAAGAAAAAATATCCAAGCTTAATGG  
 ATTGTTGGCAGATATAGTTCATGCTTGTTTACAAATTGATCCTGCTGACAGGATATCATCTAGTGATCTT  
 TTGCATCATGAGTATTTACTAGAGATGGATTTATTGAAAAATTCATGCCAGAAGTAAAGCTAAATTAC  
 TGCAGGAAGCAAAAGTCAATTCATTAATAAAGCCAAAAGAGAGTTCTAAAGAAAATGAACTCAGGAAAGA  
 TGAAAGAAAACAGTTTATACCAATACACTGCTAAGTAGTTTCAGTTTTGGGAAAGGAAAATAGAAAAGAG  
 AAAAGCCCAAGGAGATCAAAGTCAGAGTTATTAAGTCAAAGGAGGAAGAGGAGATATCTCAGAACC  
 AAAAGAAAAGAGTATGAAGGTGGACTTGGTCAACAGGATGCAAAATGAAAATGTTTCATCTCAGG  
 TACAAAACCTTGTAACCATTGAACCACCAACCCTATCAATCCCAGCACTAACTGTAATGGCTTGAAGAA  
 AATCCACATTGCGGAGGTTCTGTGACAATGCCACCCATCAATCTAACTAACAGTAATTTGATGGCTGCAA  
 ATCTCAGTTCAAATCTCTTTACCCCAAGTGTGAGGTTAACTGAAAGAGCAAAAAAGAGACGCACTTCTTC  
 ACAATCTATTGGACAAGTTATGCCTAATAGCAGGCAAGAGGATCCAGGTCCTATTCAAAGCCAAATGGAG  
 AAGGGTATATTTAATGAGCGAACAGGTCACAGTGACCAATGGCAATGAGAACAAAAGGAGGCTGAAAT  
 TTTCCAGATCTGACAGGAAAGAATTCATTTCCAGAATTGCCTGTCACAATACAGTCAAAGATACAAA  
 AGGAATGGAAGTTAAACAGATAAAAATGCTGAAGAGGGAGTCAAAGAAAACAGAGTCATCTAAGATACCA  
 ACTTTACTTAACGTGGATCAAAATCAAGAAAACAAGAGGGTGGAGATGGCCATTGCGAGGGGAAGAATT  
 TGAAAGAAAACAGGTTTTTTTTCTGG

**ACGCGTACGCGGCCGCTCGAG - GFP Tag - GTTTAA**

**Protein Sequence:**

>RG226000 representing NM\_001113575  
 Red=Cloning site Green=Tags(s)

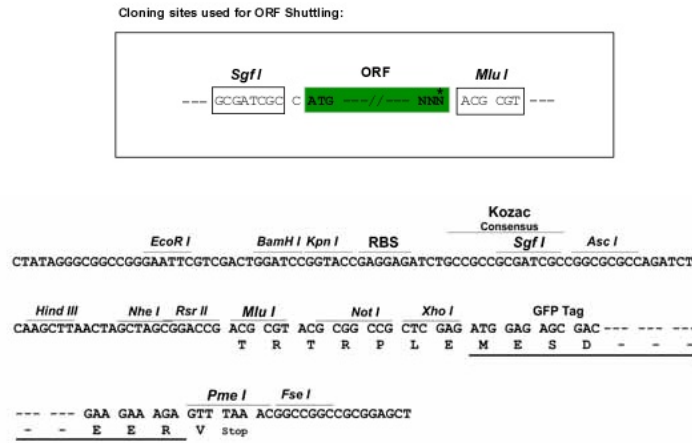
MEMYETLGKVGEGSYGTMKCKHKNTGQIVAIKIFYERPEQSVNKIAMREIKFLKQFHENLVNIEVFR  
 QKKKIHLVFEFIDHTVLDELQHYCHGLESKRLRKYLFQILRAIDYLHNSNIIHRDIKPENILVSSGITK  
 LCDFGFARTLAAPGDIYDYVATRWYRAPELVLKDTSYKPVDIWALGCMIIEMATGNPYLPSSSDLDLL  
 HKIVLVKGNLSPHLQNIKSPIFAGVVLQVQHPKNARKKYPKLNGLLADIVHAQLQIDPADRISSDL  
 LHHEYFTRDGFIEKFPELAKALLQEAKVNSLIKPKESKENELRKDERKTVYNTLLSSSVLGKEIEKE  
 KKPKEIKVRVIKVGGRGDISEPKKKEYEGGLGQQDANENVHPMSPDTKLVTIEPPNPINPSTNGLKE  
 NPHCGGSVTMPPINL TNSNLMAANLSSNLFHPSVRLTERAKKRRSSQSIGQVMPNSRQEDPGPIQSQME  
 KGIFNERTGHSDQMANENKRKLNFRSRDRKEFHPELPTVIQSKDTKGMEVKQIKMLKRESKKTESKIP  
 TLLNVDQNKQKQEGGDGHCENLKRNRFFFW

**TRTRPLE - GFP Tag - V**

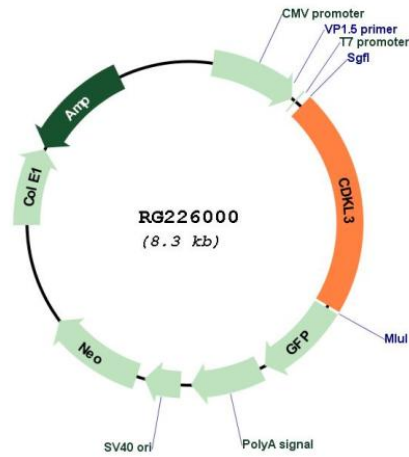
**Restriction Sites:**

SgfI-MluI

Cloning Scheme:



Plasmid Map:



ACCN: NM\_001113575

ORF Size: 1776 bp

<b>OTI Disclaimer:</b>	The molecular sequence of this clone aligns with the gene accession number as a point of reference only. However, individual transcript sequences of the same gene can differ through naturally occurring variations (e.g. polymorphisms), each with its own valid existence. This clone is substantially in agreement with the reference, but a complete review of all prevailing variants is recommended prior to use. <a href="#">More info</a>
<b>OTI Annotation:</b>	This clone was engineered to express the complete ORF with an expression tag. Expression varies depending on the nature of the gene.
<b>Components:</b>	The ORF clone is ion-exchange column purified and shipped in a 2D barcoded Matrix tube containing 10ug of transfection-ready, dried plasmid DNA (reconstitute with 100 ul of water).
<b>Reconstitution Method:</b>	<ol style="list-style-type: none"><li>1. Centrifuge at 5,000xg for 5min.</li><li>2. Carefully open the tube and add 100ul of sterile water to dissolve the DNA.</li><li>3. Close the tube and incubate for 10 minutes at room temperature.</li><li>4. Briefly vortex the tube and then do a quick spin (less than 5000xg) to concentrate the liquid at the bottom.</li><li>5. Store the suspended plasmid at -20°C. The DNA is stable for at least one year from date of shipping when stored at -20°C.</li></ol>
<b>RefSeq:</b>	<a href="#">NM_001113575.2</a>
<b>RefSeq Size:</b>	2138 bp
<b>RefSeq ORF:</b>	1779 bp
<b>Locus ID:</b>	51265
<b>UniProt ID:</b>	<a href="#">Q8IVW4</a>
<b>Cytogenetics:</b>	5q31.1
<b>Protein Families:</b>	Druggable Genome, Protein Kinase
<b>Gene Summary:</b>	The protein encoded by this gene is a member of cyclin-dependent protein kinase (CDK) family. CDK family members are highly similar to the gene products of <i>Saccharomyces cerevisiae</i> cdc28, and <i>Schizosaccharomyces pombe</i> cdc2, and are known to be important regulators of cell cycle progression. This gene was identified as a gene absent in leukemic patients with chromosome 5q deletion. This loss may be an important determinant of dysmyelopoiesis. Alternative splicing results in multiple transcript variants encoding different isoforms. [provided by RefSeq, Jul 2008]