

Product datasheet for **RG225989**

Ezrin (EZR) (NM_001111077) Human Tagged ORF Clone

Product data:

Product Type:	Expression Plasmids
Product Name:	Ezrin (EZR) (NM_001111077) Human Tagged ORF Clone
Tag:	TurboGFP
Symbol:	EZR
Synonyms:	CVIL; CVL; HEL-S-105; VIL2
Mammalian Cell Selection:	Neomycin
Vector:	pCMV6-AC-GFP (PS100010)
E. coli Selection:	Ampicillin (100 ug/mL)



[View online »](#)

ORF Nucleotide Sequence:

>RG225989 representing NM_001111077
 Red=Cloning site Blue=ORF Green=Tags(s)

TTTTGTAATACGACTCACTATAGGGCGGCCGGAATTCGTCGACTGGATCCGGTACCGAGGAGATCTGCC
 GCC**CGGATCGCC**

ATGCCGAAACCAATCAATGTCCGAGTTACCACCATGGATGCAGAGCTGGAGTTTGAATCCAGCCAAATA
 CAACTGGAAAACAGCTTTTTGATCAGGTGGTAAAGACTATCGGCCTCCGGGAAGTGTGGTACTTTGGCCT
 CCACTATGTGGATAATAAAGGATTTCTACCTGGCTGAAGCTGGATAAGAAGGTGTCTGCCAGGAGGTC
 AGGAAGGAGAATCCCCTCCAGTTCAGTTCCGGGCCAAGTTCTACCCTGAAGATGTGGTGAGGAGCTCA
 TCCAGGACATCACCCAGAAACTTTTCTTCTCCAAGTGAAGGAAGGAATCCTTAGCGATGAGATCTACTG
 CCCCCCTGAGACTGCCGTGCTCTGGGGTCTACGCTGTGCAGGCCAAGTTTGGGGACTACAACAAAGAA
 GTGCACAAGTCTGGGTACCTCAGCTCTGAGCGGCTGATCCCTCAAAGAGTGATGGACCAGCACAACTTA
 CCAGGGACCAGTGGGAGGACCGGATCCAGGTGTGGCATGCGGAACACCGTGGGATGCTCAAAGATAATGC
 TATGTTGGAATACCTGAAGATTGCTCAGGACCTGGAATGTATGGAATCAACTATTTTCGAGATAAAAAAC
 AAGAAAGGAACAGACCTTTGGCTTGGAGTTGATGCCCTTGGACTGAATATTTATGAGAAAAGATGATAAGT
 TAACCCCAAAGATTGGCTTTCTTGGAGTGAAATCAGGAACATCTCTTTCAATGACAAAAAGTTTGTTCAT
 TAAACCCATCGACAAGAAGGCACCTGACTTTGTGTTTTATGCCCCACGTCTGAGAATCAACAAGCGGATC
 CTGCAGCTCTGCATGGGCAACCATGAGTTGTATATGCGCCGAGGAAAGCCTGACACCATCGAGGTGCAGC
 AGATGAAGGCCAGGCCCGGGAGGAGAAGCATCAGAAGCAGCTGGAGCGGCAACAGCTGGAAACAGAGAA
 GAAAAGGAGAGAAACCGTGGAGAGAGAGAAAGAGCAGATGATGCGCGAGAAGGAGGAGTTGATGCTGCGG
 CTGCAGGACTATGAGGAGAAGACAAGAAGGCAGAGAGAGAGCTCTCGGAGCAGATTAGAGGGCCCTGC
 AGCTGGAGGAGGAGGAAGCGGCACAGGAGGAGGCGGAGCCCTAGAGGCTGACCGTATGGCTGCAGT
 GCGGGCTAAGGAGGAGCTGGAGAGACAGCGGTTGGATCAGATAAAGAGCCAGGAGCAGCTGGCTGCGGAG
 CTTGCAGAATACTGCAAGATTGCCCTCCTGGAAGAGCGCGGAGGCCAAGGAGGATGAAGTTGAAG
 AGTGGCAGCACAGGGCCAAAGAAGCCAGGATGACCTGGTGAAGACCAAGGAGGAGCTGCACCTGGTGT
 GACAGCACCCCGCCACCACCCCGTGTACGAGCCGGTGTGCTACCATGTCCAGGAGAGCTTGCAG
 GATGAGGGCGCAGAGCCACGGGCTACAGCGGGAGCTGTCTAGTGAGGGCATCCGGGATGACCGCAATG
 AGGAGAAGCGCATCACTGAGGCAGAGAAGAAGCAGCGTGTGCAGCGCAGCTGCTGACGCTGAGCAGCGA
 GCTGTCCAGGCCGAGATGAGAATAAGAGGACCCACAATGACATCATCCACAACGAGAACATGAGGCAA
 GGCCGGGACAAGTACAAGACGCTGCGGCAGATCCGGCAGGGCAACACCAAGCAGCGCATCGACGAGTTCC
 AGGCCCTG

ACGCGTACGCGGCCGCTCGAG - GFP Tag - GTTTAA

Protein Sequence:

>RG225989 representing NM_001111077
 Red=Cloning site Green=Tags(s)

MPKPINVRVTMDAELEFAIQPNTTGKQLFDQVVKITIGLREVWYFGLHYVDNKGFPWLKLDKKVSAQEV
 RKENPLQFKFRAKFYPEDVAEELIQDITQKLFLLQVKEGILSDEIYCPPETAVLLGSYAVQAKFGDYNKE
 VHKSGYLSSERLIPQVRMDQHKLTRDQWEDRIQVWHAHRGMLKDNAMLEYLKIAQDLEMYGINYFEIKN
 KKGTDLWLGVDAAGLNIYEKDDKLPKIGFPWSEIRNISFNDDKFFVIKPIDKKAPDFVFYAPRLRINKRI
 LQLCMGNHEL YMRRRKPDTIEVQQMKAQAREEKHQKQLERQQLETEKKRRETVEREKEQMMREKEELMLR
 LQDYEEKTKKAERELSEQIQRALQLEERKRAQEEAERLEADRMAALRAKEELERQAVDQIKSQEQLAAE
 LAEYTAKIALLEEARRRKEDEVEEWQHRAKEAQDDL VKTKEELHLVMTAPPPPPVYEPVSYHVQESLQ
 DEGAEPTGYSAELESSEIRDDRNEEKRI TEAEKNERVQRQLLTLSELSQARDENKRTHNDIIHNENMRQ
 GRDKYKTLRQIRQNTKQRIDEFEAL

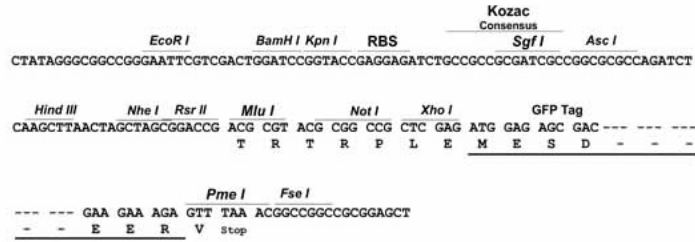
TRTRPLE - GFP Tag - V

Restriction Sites:

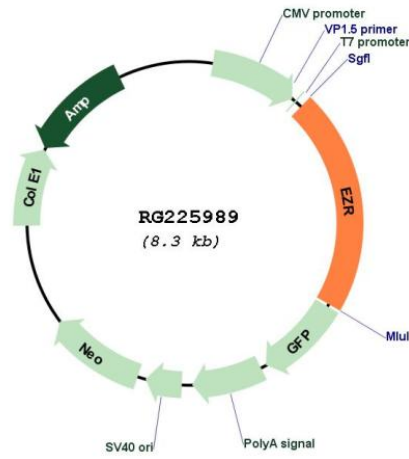
Sgfl-MluI

Cloning Scheme:

Cloning sites used for ORF Shutting:



Plasmid Map:



ACCN: NM_001111077

ORF Size: 1758 bp

OTI Disclaimer:	The molecular sequence of this clone aligns with the gene accession number as a point of reference only. However, individual transcript sequences of the same gene can differ through naturally occurring variations (e.g. polymorphisms), each with its own valid existence. This clone is substantially in agreement with the reference, but a complete review of all prevailing variants is recommended prior to use. More info
OTI Annotation:	This clone was engineered to express the complete ORF with an expression tag. Expression varies depending on the nature of the gene.
Components:	The ORF clone is ion-exchange column purified and shipped in a 2D barcoded Matrix tube containing 10ug of transfection-ready, dried plasmid DNA (reconstitute with 100 ul of water).
Reconstitution Method:	<ol style="list-style-type: none">1. Centrifuge at 5,000xg for 5min.2. Carefully open the tube and add 100ul of sterile water to dissolve the DNA.3. Close the tube and incubate for 10 minutes at room temperature.4. Briefly vortex the tube and then do a quick spin (less than 5000xg) to concentrate the liquid at the bottom.5. Store the suspended plasmid at -20°C. The DNA is stable for at least one year from date of shipping when stored at -20°C.
RefSeq:	NM_001111077.2
RefSeq Size:	3138 bp
RefSeq ORF:	1761 bp
Locus ID:	7430
UniProt ID:	P15311
Cytogenetics:	6q25.3
Protein Families:	Druggable Genome
Protein Pathways:	Leukocyte transendothelial migration, Pathogenic Escherichia coli infection, Regulation of actin cytoskeleton
Gene Summary:	The cytoplasmic peripheral membrane protein encoded by this gene functions as a protein-tyrosine kinase substrate in microvilli. As a member of the ERM protein family, this protein serves as an intermediate between the plasma membrane and the actin cytoskeleton. This protein plays a key role in cell surface structure adhesion, migration and organization, and it has been implicated in various human cancers. A pseudogene located on chromosome 3 has been identified for this gene. Alternatively spliced variants have also been described for this gene. [provided by RefSeq, Jul 2008]