

## Product datasheet for **RG225988**

### **MSF (SEPT9) (NM\_001113491) Human Tagged ORF Clone**

#### **Product data:**

Product Type:	Expression Plasmids
Product Name:	MSF (SEPT9) (NM_001113491) Human Tagged ORF Clone
Tag:	TurboGFP
Symbol:	MSF
Synonyms:	AF17q25; MSF; MSF1; NAPB; PNUTL4; SEPT9; SeptD1; SINT1
Mammalian Cell Selection:	Neomycin
Vector:	pCMV6-AC-GFP (PS100010)
E. coli Selection:	Ampicillin (100 ug/mL)



[View online »](#)

**ORF Nucleotide Sequence:**

>RG225988 representing NM\_001113491  
 Red=Cloning site Blue=ORF Green=Tags(s)

TTTTGTAATACGACTCACTATAGGGCGGCCGGGAATTCGTCGACTGGATCCGGTACCGAGGAGATCTGCC  
 GCC**CGGATCGCC**

ATGAAGAAGTCTTACTCAGGAGGCACGCGGACCTCCAGTGGCCGGCTCCGGAGGCTTGGTGACTCCAGTG  
 GCCCAGCCTTGAAAAGATCTTTTGGAGTCGAGGAGGTCGAGACACCCAACCTCCACCCACCCCGGAGGGT  
 CCAGACTCCCCTACTCCGAGCCACTGTGGCCAGCTCCACCCAGAAATTCAGGACCTGGGCGTGAAGAAC  
 TCAGAACCCTCGGCCCGCCATGTGGACTCCCTAAGCCAACGCTCCCCAAGGCGTCCCTGCGGAGGGTGG  
 AGCTCTCGGGCCCAAGGCGGCCGAGCCGGTGTCCCGGCGCACTGAGCTGTCCATTGACATCTCGTCCAA  
 GCAGGTGGAGAACCGCGGGCCATCGGCCCGTCCCGGTTCCGGGCTCAAGAGGGCCGAGGTGTTGGCCAC  
 AAGACGCCAGAACCAGCCCTCGGAGGACGAGATCACCATCGTCAAACCCAGGAGTCAGCCACCCGGA  
 GGATGGAGCCCCCTGCCTCAAGGTCCCGAGGTGCCACTGCCCTGCCACCGACGAGCCCCAAGAG  
 GGTGGAGATCCAGATGCCAAGCCTGCTGAGGCGCCACCGCCCCAGCCAGCCAGACCTTGGAGAAT  
 TCAGAGCCTGCCCTGTGTCTCAGCTGCAGAGCAGGCTGGAGCCCAAGCCCCAGCCCCCTGTGGCTGAGG  
 CTACACCCCGGAGCCAGGAGGCCACTGAGGCGGCTCCCAGCTGCGTTGGCGACATGGCCGACACCCCCAG  
 AGATGCCGGGCTCAAGCAGGCGCCTGCATCACGGAACGAGAAGGCCCCCGTGGACTTCGGCTACGTGGGG  
 ATTGACTCCATCTGGAGCAGATGCGCCGGAAGGCCATGAAGCAGGGCTTCGAGTTCAACATCATGGTGG  
 TCGGGCAGAGCGGCTTGGGTAATCCACCTTAATCAACACCTCTTCAAATCCAAATCAGCCGGAAGTC  
 GGTGCAGCCACCTCAGAGGAGCGCATCCCAAGACCATCGAGATCAAGTCCATCACGCACGATATTGAG  
 GAGAAAGCGCTCCGGATGAAGCTGACAGTGATTGACACACCAGGGTTCGGGGACCACATCAACAACGAGA  
 ACTGCTGGCAGCCATCATGAAGTTCATCAATGACCAGTACGAGAAATACCTGCAGGAGGAGGTCACAT  
 CAACCGCAAGAAGCGCATCCCGGACACCCGCGTCCACTGCTGCCTCTACTTCATCCCGCCACCGGCCAC  
 TCCTCAGGCCCTGGACATCGAGTTTATGAAACGCTGAGCAAGTGGTCAACATCGTCCCTGTATCG  
 CCAAGGCGGACACTCACCTGGAGGAGAGGGTCCACTTCAAACAGCGGATCACCGCAGACCTGTGTGTC  
 CAACGGCATCGACGTGTACCCCAAGGAATTTGATGAGGACTCGGAGGACCGGCTGGTGAACGAGAAG  
 TTCCGGGAGATGATCCCATTGCTGTGGTGGGCGAGTACCAGGTCACCGCAAGAGGATCC  
 TTGGGAGGAAGACCAAGTGGGTACCATCGAAGTTGAAAACACCACACTGTGAGTTTGCCTACCTGCG  
 GGACCTTCTCATCAGGACGCACATGCAGAACATCAAGGACATCACCAGCAGCATCCACTTCGAGGCGTAC  
 CGTGTGAAGCGCTCAACGAGGGCAGCAGGCCATGGCCAACGGCATGGAGGAGAAGGAGCCAGAAGCCC  
 CGGAGATG

**ACGCGT**ACGCGGCCGCTCGAG - GFP Tag - GTTTAA

**Protein Sequence:**

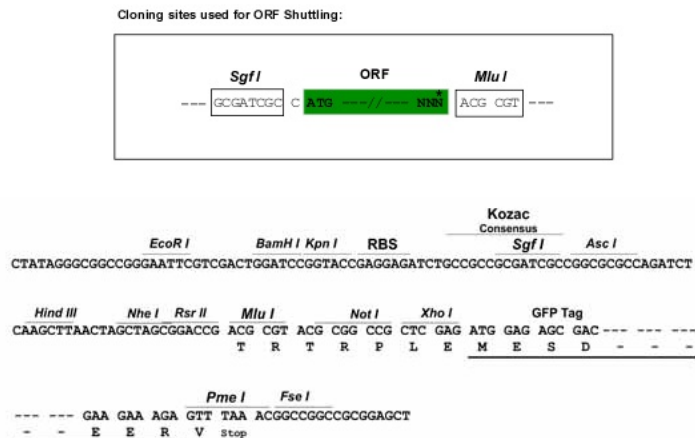
>RG225988 representing NM\_001113491  
 Red=Cloning site Green=Tags(s)

MKKSYSGGTRTSSGRLRRLGDSSGPALKRSFEVEEETPNSTPPRRVQTPLLRAVASSTQKFQDLGVKN  
 SEPSARHVDSLQSRPKASLRRVELSGPKAAEPVSRRELSIDISSKQVENAGAIGPSRFLKRAEVLGH  
 KTPEPAPRREITIVKQESAHRRMEPPASKVPEVPTAPATDAAPKRVEIQMPKPAEAPTAPSPAQTLEN  
 SEPAPVSQLQSRLEPKQPPVAEATPRSQEATEAAPSCVGMADTPRDAGLKQAPASRNEKAPVDFGYVG  
 IDSILEQMRRKAMKQGFENIMVVGQSLGKSTLINTLFSKISRKSVQPTSEERIPKTIIEIKSITHDIE  
 EKGVRMCLTVIDTPGFGDHINNENCWQPIKMFINDQYKYLQEEVNIINRKKRIPDTRVHCCLYFIPATGH  
 SLRPLDIEFMKRLSKVVNIVPVIAKADTLLEERVHFKQRITADLLSNGIDVYPQKFEDEDEDLNEK  
 FREMIPFVAVGSDHEYQVNGKRILGRKTKWGTIEVENTHCEFAYLRLDLLIRTHMQNIKIDITSSIHFEAY  
 RVKRLNEGSSAMANGMEEKEPEPEM

**TRTRPLE** - GFP Tag - V

**Restriction Sites:**

Sgfl-MluI

**Cloning Scheme:**


**ACCN:** NM\_001113491

**ORF Size:** 1758 bp

**OTI Disclaimer:** The molecular sequence of this clone aligns with the gene accession number as a point of reference only. However, individual transcript sequences of the same gene can differ through naturally occurring variations (e.g. polymorphisms), each with its own valid existence. This clone is substantially in agreement with the reference, but a complete review of all prevailing variants is recommended prior to use. [More info](#)

**OTI Annotation:** This clone was engineered to express the complete ORF with an expression tag. Expression varies depending on the nature of the gene.

**Components:** The ORF clone is ion-exchange column purified and shipped in a 2D barcoded Matrix tube containing 10ug of transfection-ready, dried plasmid DNA (reconstitute with 100 ul of water).

**Reconstitution Method:**

1. Centrifuge at 5,000xg for 5min.
2. Carefully open the tube and add 100ul of sterile water to dissolve the DNA.
3. Close the tube and incubate for 10 minutes at room temperature.
4. Briefly vortex the tube and then do a quick spin (less than 5000xg) to concentrate the liquid at the bottom.
5. Store the suspended plasmid at -20°C. The DNA is stable for at least one year from date of shipping when stored at -20°C.

**RefSeq:** [NM\\_001113491.2](#)

**RefSeq Size:** 3837 bp

**RefSeq ORF:** 1761 bp

**Locus ID:** 10801

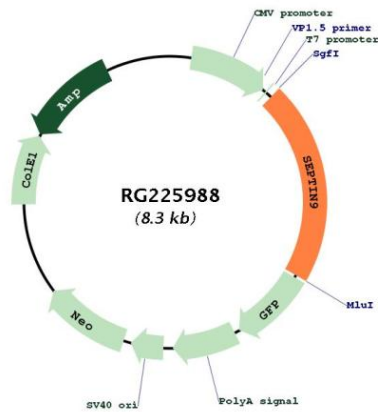
**UniProt ID:** [Q9UHD8](#)

**Cytogenetics:** 17q25.3

**Protein Families:** Druggable Genome

**Gene Summary:** This gene is a member of the septin family involved in cytokinesis and cell cycle control. This gene is a candidate for the ovarian tumor suppressor gene. Mutations in this gene cause hereditary neuralgic amyotrophy, also known as neuritis with brachial predilection. A chromosomal translocation involving this gene on chromosome 17 and the MLL gene on chromosome 11 results in acute myelomonocytic leukemia. Multiple alternatively spliced transcript variants encoding different isoforms have been described.[provided by RefSeq, Mar 2009]

**Product images:**



Circular map for RG225988