

Product datasheet for **RG225966**

TTC22 (NM_001114108) Human Tagged ORF Clone

Product data:

Product Type:	Expression Plasmids
Product Name:	TTC22 (NM_001114108) Human Tagged ORF Clone
Tag:	TurboGFP
Symbol:	TTC22
Mammalian Cell Selection:	Neomycin
Vector:	pCMV6-AC-GFP (PS100010)
E. coli Selection:	Ampicillin (100 ug/mL)



[View online »](#)

ORF Nucleotide Sequence:

>RG225966 representing NM_001114108
 Red=Cloning site Blue=ORF Green=Tags(s)

TTTTGTAATACGACTCACTATAGGGCGGCCGGAATTCGTCGACTGGATCCGGTACCGAGGAGATCTGCC
 GCC**CGCATCGCC**

ATGGCGGAGCTGGAGGCTGTGGCCGACGATCTAGACGCCCTCATCGACGACCTGGACTACCTCCCGGGCC
 ACTTTCACCTGGAGATGCAGTTGAACTTCGAGCCGCGCTCGCCGCCCCACAGCGCGCCCGGACCTGAA
 GCTGCAGCGGGAGGCTCTGCGGCAGGAGCTCCAGCTGGCGGCCGCCCGCAGCGCCCGCTGTGCGTCA
 CTCCTGGGCGCTTTCGATTCTACCTGGAGGAGCTGGACGAGGCCCGGAGTGCTTCTCGAGGTGGCC
 ACGAGCACCCGGCAACCTCAATGCCTGGGCCAATCTGGCACACGTGTACGGGCGGCTGGCCAGGAAGA
 AGAGGAGGAGGCGTGCGCCGACGGCTGGCCGACCTCATGGCCCTGGCAGAGGAGCCGAGGCCCGGG
 GACCCCGAGTCCGCGCCGCTCGCTGCCTGGCCGAGCAGGGCTACGCGCATGGCTTCGACGTCGGCTGCG
 CCAGCCCAGAGGAGCGTGCAGGGGGCTGGCGGCAGGCATCGCGCTCTACGACAAGGCGCTAGGCTACGG
 GCAGCAGATCCCAGTGGAGGAGAAAAGGGGCTGGTATTTACCATGGCAACTCTACATCAGGCTAGAT
 GGATCTTCTCGAGCTGGGCAGTGAGGAGCAGAAGAGACTGCCTGCCTCAACCGACGCTGGCCCTAC
 TCCGGCAAGTGCTGAAGTCCGAGGACCCCGCCACCGAGCCCTGGCCGTGGTGTACCTCGGGATGTGCT
 GGAGCGGAAGGACACCTTCTCCACCACCCCATGGGCGTCCATGACTGCGGGTACTCAGGGACCGACCT
 CTAGACTGCTTCGGCAAGGCCATTGAGATTGCCAAGAACAACCTCCCATCTGAATCGCCTGGCAAAAA
 TCTTCTACTTCTCGGAAAGCAGGATATGGCCATTGGAACCTGCAACATGGCCCTGGATGTCTACGAGA
 TCCAGAGCTCACTGGCAGGCGTACTGCACAAGGGCAAGATCCACATCAGAGCCTACCTGCATGACCTC
 AAGCGGGCAAGATGGGTCTCGGGGCAATGCCTGACAGGAACACCTGGCCTGTGCCAAGGCTGACCTTG
 AGGAAGTGGTCAGGGTGTGCCAGGCTCAAGGCGTACCTGGACATCGCCAGGCTACTACTATATG
 CGTGGACGCGGTGCAGGAGCTGCTGGCGGTGGACGAGGCGCGCTGAACCGAGCGCTGGTGTCTCGGCC
 AAGCGGGCGAGTCGAGGCTGGGTGCCACGCTGCCCGAGCTGCAGCTGCTGCGCGCAAGTGCCTGCGCA
 TCAAGGGCGAGGACGCCAACCGCGCCGCTGCTTCAAGCGCGCAGTGGAGCTGGACGACGCGGGCTCCAG
 CCACACCGACGGCTTCGGCTGCCTGCTCGAGGCGCTGCTGGCGCAGTGGAGCCAGGCACAGCTGAGCGAC
 GGGGAGCTGGCCCGGAGGTGGACGCTGGCTGCGCCGCGCCAGGACAAGTACCCCGGGCGCGCTGCG
 GCCAGGAGCTGCAGCGCTGTGGCGGGCACACGGACGAGGTGTTGGGGCTGGCCCGGGCCCTGGTGGC
 CCAGGGACGCGCGCTGGTGGCGCTGCTCTTCGAGACCATGGAGCGCGAGGGCGAGGGCCAGCGCG
 CGCGGGACCGCGGGCTGTCTATTC

ACGCGTACGCGGGCCGCTCGAG – GFP Tag – GTTTAA

Protein Sequence:

>RG225966 representing NM_001114108
 Red=Cloning site Green=Tags(s)

MAELEAVADDLDALIDDLDYLPGHFHLEMQLNFEPRSPAPQRARDLKLQREGLRQELQLAAPQRPVAVRH
 LLGAFAYFYLEELDEARECFLEVAHEHPGNLAWANLAHVYGRGQEEEEEAARLADLMGLAEPEEAAG
 DPQLRAARCLAEQGYAHGFDVGCASPEERARGLAAGIALYDKALGYGQQIPMEEKRGWYFTMATLYIRLD
 GIFLELGSEEQKRLPAFNRTLALLRQVLKSEDPHRALAWCYLGMLLERKDTFSTTPMGVHDCGYSGTD
 LDCFGKAIEIAKNQPPILNRLAKIFYFLGKQDMAIGTCNMALDVLDPPELNWQAYCTRAKIHIRAYLHDL
 KRAKMGLGMPDRNHLACAKADLEEVRVCPGFKAYLDIGQVYYMVGVDVQELLAVDEAALNVALVFLA
 KAGESELGATLPELQLLRGKCLRIKGEDANAACFKRAVELDDAGSSHTDGFGLLEALLAQWSQAQLSD
 GELGREVDAWLRRADKYPAAARLRQELQRVWRGHTDEVLGLARALVAQGRPALVRLLFETMEREGEGASA
 PRDRRAVSF

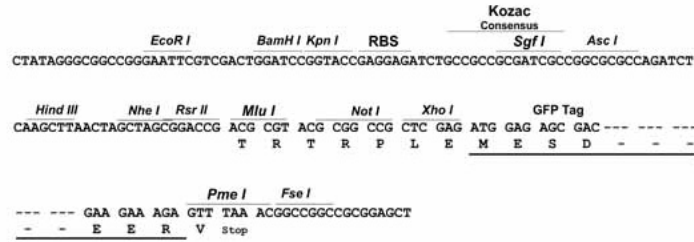
TRTRPLE – GFP Tag – V

Restriction Sites:

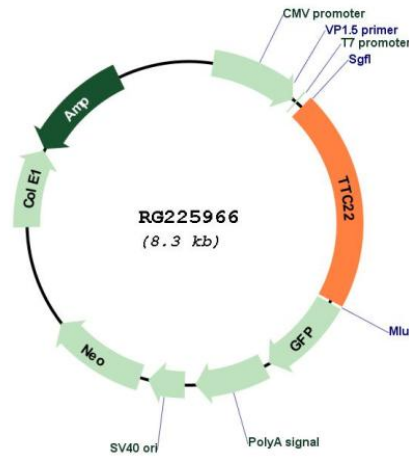
Sgfl-MluI

Cloning Scheme:

Cloning sites used for ORF Shutting:



Plasmid Map:



ACCN:

NM_001114108

ORF Size:	1707 bp
OTI Disclaimer:	The molecular sequence of this clone aligns with the gene accession number as a point of reference only. However, individual transcript sequences of the same gene can differ through naturally occurring variations (e.g. polymorphisms), each with its own valid existence. This clone is substantially in agreement with the reference, but a complete review of all prevailing variants is recommended prior to use. More info
OTI Annotation:	This clone was engineered to express the complete ORF with an expression tag. Expression varies depending on the nature of the gene.
Components:	The ORF clone is ion-exchange column purified and shipped in a 2D barcoded Matrix tube containing 10ug of transfection-ready, dried plasmid DNA (reconstitute with 100 ul of water).
Reconstitution Method:	<ol style="list-style-type: none">1. Centrifuge at 5,000xg for 5min.2. Carefully open the tube and add 100ul of sterile water to dissolve the DNA.3. Close the tube and incubate for 10 minutes at room temperature.4. Briefly vortex the tube and then do a quick spin (less than 5000xg) to concentrate the liquid at the bottom.5. Store the suspended plasmid at -20°C. The DNA is stable for at least one year from date of shipping when stored at -20°C.
RefSeq:	NM_001114108.1 , NP_001107580.1
RefSeq Size:	1979 bp
RefSeq ORF:	1710 bp
Locus ID:	55001
UniProt ID:	Q5TAA0
Cytogenetics:	1p32.3
Gene Summary:	This gene encodes a protein with seven tetratricopeptide (TPR) repeats. Tetratricopeptide repeat containing motifs are found in a variety of proteins and may mediate protein-protein interactions and chaperone activity. Alternatively spliced transcript variants have been found for this gene. [provided by RefSeq, Jun 2011]