

Product datasheet for **RG225951**

p63 (TP63) (NM_001114978) Human Tagged ORF Clone

Product data:

Product Type:	Expression Plasmids
Product Name:	p63 (TP63) (NM_001114978) Human Tagged ORF Clone
Tag:	TurboGFP
Symbol:	TP63
Synonyms:	AIS; B(p51A); B(p51B); EEC3; KET; LMS; NBP; OFC8; p40; p51; p53CP; p63; p73H; p73L; RHS; SHFM4; TP53CP; TP53L; TP73L
Mammalian Cell Selection:	Neomycin
Vector:	pCMV6-AC-GFP (PS100010)
E. coli Selection:	Ampicillin (100 ug/mL)



[View online »](#)

ORF Nucleotide Sequence:

>RG225951 representing NM_001114978
 Red=Cloning site Blue=ORF Green=Tags(s)

TTTTGTAATACGACTCACTATAGGGCGGCCGGGAATTCGTCGACTGGATCCGGTACCGAGGAGATCTGCC
 GCC**GCGATCGCC**

ATGAATTTTGAACCTTCACGGTGTGCCACCTACAGTACTGCCCTGACCCTTACATCCAGCGTTTCGTAG
 AAACCCAGCTCATTCTCTTGGAAAGAAAGTTATTACCGATCCACCATGTCCCAGAGCACACAGACAAA
 TGAATTCCTCAGTCCAGAGGTTTTCCAGCATATCTGGGATTTTCTGGAACAGCCTATATGTTTCAGTTCAG
 CCCATTGACTTGAACCTTGTGGATGAACCATCAGAAGATGGTGCACAAACAAGATTGAGATTAGCATGG
 ACTGTATCCGCATGCAGGACTCGGACCTGAGTGACCCCATGTGGCCACAGTACACGAACCTGGGGCTCT
 GAACAGCATGGACCAGCAGATTGAGAACGGCTCCTCGTCCACCAGTCCCTATAACACAGACCACGCGCAG
 AACAGCGTCACGGCGCCCTCGCCCTACGCACAGCCAGCTCCACCTTCGATGCTCTCTCCATCACCCG
 CCATCCCTCCAACACCGACTACCCAGGCCCGCACAGTTTCGACGTGCTCTCCAGCAGTCGAGCACCGC
 CAAGTCGGCCACCTGGACGTATCCACTGAACTGAAGAACTCTACTGCCAAATTGCAAAGACATGCCCC
 ATCCAGATCAAGGTGATGACCCACCTCCTCAGGGAGCTGTTATCCGCGCCATGCCTGTCTACAAAAAG
 CTGAGCACGTACCGGAGGTGGTGAAGCGGTGCCCAACCATGAGCTGAGCCGTGAATTCAACGAGGGACA
 GATTGCCCTCCTAGTCAATTTGATTTCGAGTAGAGGGGAACAGCCATGCCAGTATGTAGAAGATCCCATC
 ACAGGAAGACAGAGTGTGCTGGTACCTTATGAGCCACCCAGGTTGGCACTGAATTCACGACAGTCTTGT
 ACAATTTTCATGTGAACAGCAGTTGTGTTGGAGGGATGAACCGCCGTCCAATTTTAACTATTGTTACTCT
 GGAAACCAGAGATGGGCAAGTCTGGGCCGACGCTGCTTTGAGGCCCGGATCTGTCTTGCCAGGAAGA
 GACAGGAAGCGGATGAAGATAGCATCAGAAAGCAGCAAGTTTCGGACAGTACAAAGAACGGTGTGGTA
 CGAAGCGCCCGTTTCGTGAGAACACACATGGTATCCAGATGACATCCATCAAGAAACGAAGATCCCGAGA
 TGATGAACTGTTATACTTACCAGTGAGGGCCGTGAGACTTATGAAATGCTGTTGAAGATCAAAGAGTCC
 CTGGAACCTCATGCAGTACCTTCCCTCAGCACACAATTGAAACGTACAGGCAACAGCAACAGCAGCAGCACC
 AGCACTTACTTCAGAAACAGACCTCAATACAGTCTCCATCTTCATATGGTAACAGCTCCCCACCTCTGAA
 CAAAATGAACAGCATGAACAAGTGCCTTCTGTGAGCCAGCTTATCAACCCTCAGCAGCGCAACGCCCTC
 ACTCTACAACCATTCCTGATGGCATGGGAGCCAAACATCCCATGATGGGCACCCACATGCCAATGGCTG
 GAGACATGAATGGACTCAGCCCCACCCAGGCACTCCCTCCCCACTCTCCATGCCATCCACCTCCCCTG
 CACACCCACCTCCGTATCCACAGATTGCAGCATTGTCAGGATCTGGCAAGTC

ACGCGTACGCGGCCGCTCGAG - GFP Tag - GTTTAA

Protein Sequence:

>RG225951 representing NM_001114978
 Red=Cloning site Green=Tags(s)

MNFETSRCATLQYCPDPYIQRVFETPAHFSWKESYYRSTMSQSTQTNEFLSPEVFNQHIWDFLEQPICSVQ
 PIDLNFVDEPSEDGATNKEISMDCIRMQSDLSMPMWPQYTNLGLLNSMDQIQNGSSSTSPYNTDHAQ
 NSVTAPSPYAQPSSTFDALSPSPAIPSNLDYDYPGPHSFDVDFQSSSTAKSATWTYSTELKKLYCQIAKTCP
 IQIKVMTPPPQGAVIRAMPVYKKAHVTEVVKRCPNHEL SREFNEGQIAPPSHLIRVEGNASHAQYVEDPI
 TGRQSVLVPYEPQVGFTEFTTVLYNFMCNSSCVGGMNRRPILIIIVTLETRDQVLGRRCFEARICACPR
 DRKADEDSIRKQVSDSTKNGDGTKRPFQNTHTGIQMTSIKKRRSPDDELLYLPVRGRETYEMLLIKES
 LELMQYLPQHTIETIRQQQQQHLLQKQTSIQSPSSYGNSSPPLNKMNSMNKLPSVSQLINPQQRNAL
 TPTTIPDGMGANIPMMGTHMPMAGDMNGLSPTQALPPPLSMPSTSHCTPPPPYPTDCSIVRIWQV

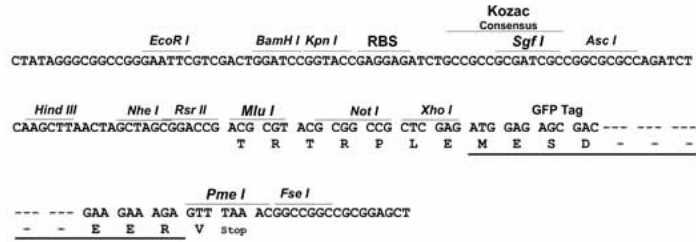
TRTRPLE - GFP Tag - V

Restriction Sites:

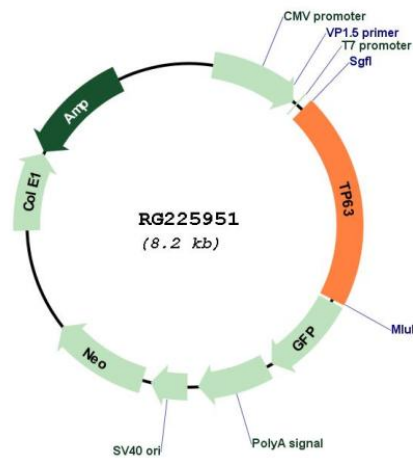
Sgfl-MluI

Cloning Scheme:

Cloning sites used for ORF Shutting:



Plasmid Map:



ACCN:

NM_001114978

ORF Size:	1665 bp
OTI Disclaimer:	The molecular sequence of this clone aligns with the gene accession number as a point of reference only. However, individual transcript sequences of the same gene can differ through naturally occurring variations (e.g. polymorphisms), each with its own valid existence. This clone is substantially in agreement with the reference, but a complete review of all prevailing variants is recommended prior to use. More info
OTI Annotation:	This clone was engineered to express the complete ORF with an expression tag. Expression varies depending on the nature of the gene.
Components:	The ORF clone is ion-exchange column purified and shipped in a 2D barcoded Matrix tube containing 10ug of transfection-ready, dried plasmid DNA (reconstitute with 100 ul of water).
Reconstitution Method:	<ol style="list-style-type: none">1. Centrifuge at 5,000xg for 5min.2. Carefully open the tube and add 100ul of sterile water to dissolve the DNA.3. Close the tube and incubate for 10 minutes at room temperature.4. Briefly vortex the tube and then do a quick spin (less than 5000xg) to concentrate the liquid at the bottom.5. Store the suspended plasmid at -20°C. The DNA is stable for at least one year from date of shipping when stored at -20°C.
RefSeq:	NM_001114978.2
RefSeq Size:	4833 bp
RefSeq ORF:	1668 bp
Locus ID:	8626
UniProt ID:	Q9H3D4
Cytogenetics:	3q28
Protein Families:	Druggable Genome, Transcription Factors
Gene Summary:	This gene encodes a member of the p53 family of transcription factors. The functional domains of p53 family proteins include an N-terminal transactivation domain, a central DNA-binding domain and an oligomerization domain. Alternative splicing of this gene and the use of alternative promoters results in multiple transcript variants encoding different isoforms that vary in their functional properties. These isoforms function during skin development and maintenance, adult stem/progenitor cell regulation, heart development and premature aging. Some isoforms have been found to protect the germline by eliminating oocytes or testicular germ cells that have suffered DNA damage. Mutations in this gene are associated with ectodermal dysplasia, and cleft lip/palate syndrome 3 (EEC3); split-hand/foot malformation 4 (SHFM4); ankyloblepharon-ectodermal defects-cleft lip/palate; ADULT syndrome (acrodermato-ungual-lacrimal-tooth); limb-mammary syndrome; Rap-Hodgkin syndrome (RHS); and orofacial cleft 8. [provided by RefSeq, Aug 2016]