

## Product datasheet for **RG225933**

### ZNF502 (NM\_001134440) Human Tagged ORF Clone

#### Product data:

Product Type:	Expression Plasmids
Product Name:	ZNF502 (NM_001134440) Human Tagged ORF Clone
Tag:	TurboGFP
Symbol:	ZNF502
Mammalian Cell Selection:	Neomycin
Vector:	pCMV6-AC-GFP (PS100010)
E. coli Selection:	Ampicillin (100 ug/mL)



[View online »](#)

**ORF Nucleotide Sequence:**

>RG225933 ORF sequence, **codon optimized**.  
**Due to the complexity of NM\_001134440, the ORF clone is codon optimized for mammalian Expression.**  
**The nucleotide sequence differs from the reference sequence, yet the amino acid sequence remains identical.**

Red=Cloning site Blue=ORF Green=Tags(s)

TTTTGTAATACGACTCACTATAGGGCGCCGGAATTCGTCGACTGGATCCGGTACCGAGGAGATCTGCC  
 GCC**GCGATCGCC**

ATGCTGAACATGCAGGGCGCCGAGGAACGGGATATACGGCGCGAAACCTGCCAGGGTGGTCAATAAAA  
 ACAAACCTGCCCTGGAGCAGGATGTGTGCAAAATCGATTCTCCGGGATCGTGGTAAAGCGATTCCAAGA  
 AGATGAATACCAGGATAGCACCTTTGAGGAGAAATACGCTTGCAGGGGAATGAAGGAGAACTCTCCTCGC  
 GAGATTGCCGAGTCTGCTTGTCCAAGAGGGTGGCTTCGGGCGCATTACCTTTATCCACAAGGAGGCAC  
 CACCCGAAATTATAAGTCAGGGCTACAATTTTGAAAAGAGTCTTCTGCTCACTAGCAGCCTGGTGACTAG  
 GCTGCGGTGAGCACCGAAGAGAGTCTGCACCAGTGGGAGACATCTAATATCCAGACTAACGATATTAGC  
 GACCAATCAAAGTGCCCAACTCTCTGTACCCAGAAAAAGTCATGGAAATGCAATGAGTGTGGCAAGACAT  
 TCACCCAGTATCATCTCTTACCCAGCACCAGCGAACTCATACCGGCGAAAGGCCCTACACATGCGAGGA  
 GTGCGGCAAGGCCTTCTCACGCAGCAGTTTCTCGTCCAGCACCAGAAATCCACACAGGTGTCAAACCT  
 TACGGATGTGAGCAGTGTGGCAAAACATTTAGATGCAGATCCTTTCTGACCCAGCATCAGCGGATCCATA  
 CCGGCGAGAAACCCTACAAGTGTAAAGTGTGGGAATTCCTCCGCAATCATAGCCATGACAGAAACA  
 CCAGAGAATCCATACAGGAGAGAAGCCCTACAAGTGAACAGATGTGGAAAGCGTTCAATCAGAAACACA  
 CACCTCATCCACCAGAGGATCCATACAGGCGAGAAGCCTTATATTTGTAGTGAATGTGGCAGCAGCT  
 TTAGAAAACACAGCAACCTGACTCAGCACAACGGATTACACCCGGCGAGAAACCGCACAAAGTGTATGA  
 GTGCGGAAAAACCTTCCAGACCAAGGCCAACCTGTACAGCATCAGCGCATTACAGCGGCGAAAAGCCA  
 TATAAGTGCAAAGAAATGCGGAAAGCTTTTTGTCACTCCCTAGCCTGATTAACACCAGAGAATCCATA  
 CAGGCGAGAAGCCATATAAATGCAAGGAATGCGGAAAGGCATTTACCCAGAGCACGCCATTGACCAAGCA  
 CCAACGCATCCACACCGGTGAGCGACCGTACAATGTTTCCAGAAATGCGGAAAAGCCTTCATACAATCTATC  
 TGCTGATTCGCCACCAGAGATCTCATACAGGCGAGAAACCATACAAGTGAATGAATGCGGAAAAGGAT  
 TTAATCAGAACACATGTTTGACCAACACATGAGAATTCACACAGGGGAGAAGCCCTATAAATGTAAGGA  
 ATGCGGTAAAGCCTTTGCCCATAGTAGCTCTTACTGAACATCAGAAACACACACTGGTGAGAAGCTC  
 TACAAGTGTCTGAGTGCAGAAAAACATTTAGAAAATATGCCATCTGTCCGAACACTATCGAATCCATA  
 CAGGCGAGAAGCCTTATGAATGTATAGAATGCGGCAAAATTTTTAGGCATTTCATCCGTCCTCTTTGCGCA  
 TCAGAAACTCCACTCCGGCGAC

**ACGCGT**ACGCGGGCCGCTCGAG – GFP Tag – GTTTAA

**Protein Sequence:**

>RG225933 representing NM\_001134440  
 Red=Cloning site Green=Tags(s)

MLNMQGAEEIRDIRETCPGWVNKNKPALEQDVCKIDSSGI VVKRFQEDEYQDSTFEKEYACEGMKENS  
 EIAESCLFQEGGFGRITFIHKEAPPEIISQGYNFEKSLLLTSSLVTRLRVSTEEHLHQWETSNIQTNDIS  
 DQSKCPTLCTQKKSWKNECGKTFQSSSLTQHQRHTHTGERPYTCEECGKAFSRSFLVQHQRHTGKVP  
 YGCEQCGKTFRCRSFLTQHQRHTGKPYKCNCEGNSFRNHSHTLTHQRHTGKPYKCNRCGKAFNQT  
 HLIHQRIHTGKPYICSECGSSFRKHSNLTQHQRHTGKPKHCKDECGKTFQTKANLSQHQRHTGKPY  
 YKCKEKGKAFQSPSLIKHQRIHTGKPYKCKEKGKAFQSTPLTKHQRIHTGERPYKCEGKAFIQSI  
 CLIRHQSHTGKPYKCNCEGKGFNQTCLTQHMRIHTGKPYKCKEKGKAFHSSSLTEHHRHTGKEL  
 YKSECEKTFRKYAHLSEHYRIHTGKPYECIECGKFFRHSSVLFRRHQLHSGD

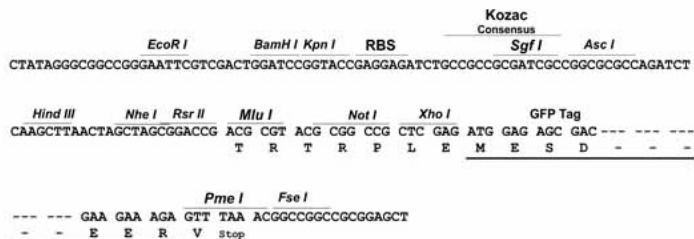
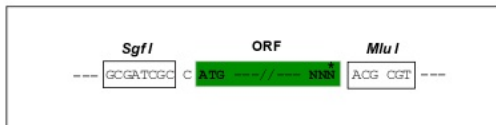
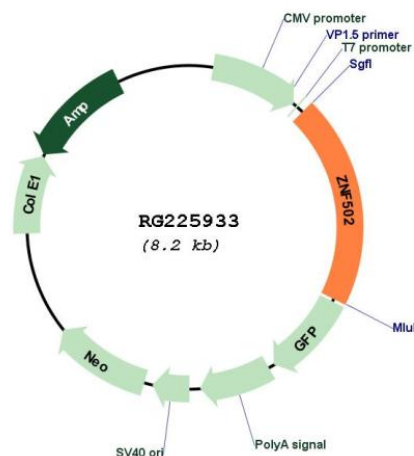
**TRTRPLE** – GFP Tag – V

**Restriction Sites:**

Sgfl-MluI

**Cloning Scheme:**

Cloning sites used for ORF Shutting:


**Plasmid Map:**


ACCN: NM\_001134440

ORF Size: 1632 bp

<b>OTI Disclaimer:</b>	The molecular sequence of this clone aligns with the gene accession number as a point of reference only. However, individual transcript sequences of the same gene can differ through naturally occurring variations (e.g. polymorphisms), each with its own valid existence. This clone is substantially in agreement with the reference, but a complete review of all prevailing variants is recommended prior to use. <a href="#">More info</a>
<b>OTI Annotation:</b>	This clone was engineered to express the complete ORF with an expression tag. Expression varies depending on the nature of the gene.
<b>Components:</b>	The ORF clone is ion-exchange column purified and shipped in a 2D barcoded Matrix tube containing 10ug of transfection-ready, dried plasmid DNA (reconstitute with 100 ul of water).
<b>Reconstitution Method:</b>	<ol style="list-style-type: none"><li>1. Centrifuge at 5,000xg for 5min.</li><li>2. Carefully open the tube and add 100ul of sterile water to dissolve the DNA.</li><li>3. Close the tube and incubate for 10 minutes at room temperature.</li><li>4. Briefly vortex the tube and then do a quick spin (less than 5000xg) to concentrate the liquid at the bottom.</li><li>5. Store the suspended plasmid at -20°C. The DNA is stable for at least one year from date of shipping when stored at -20°C.</li></ol>
<b>RefSeq:</b>	<a href="#">NM_001134440.1</a> , <a href="#">NP_001127912.1</a>
<b>RefSeq Size:</b>	3284 bp
<b>RefSeq ORF:</b>	1635 bp
<b>Locus ID:</b>	91392
<b>UniProt ID:</b>	<a href="#">Q8TBZ5</a>
<b>Cytogenetics:</b>	3p21.31
<b>Protein Families:</b>	Transcription Factors
<b>Gene Summary:</b>	May be involved in transcriptional regulation.[UniProtKB/Swiss-Prot Function]