

Product datasheet for **RG225921**

C14orf93 (NM_001130706) Human Tagged ORF Clone

Product data:

Product Type:	Expression Plasmids
Product Name:	C14orf93 (NM_001130706) Human Tagged ORF Clone
Tag:	TurboGFP
Symbol:	C14orf93
Synonyms:	RTFC
Mammalian Cell Selection:	Neomycin
Vector:	pCMV6-AC-GFP (PS100010)
E. coli Selection:	Ampicillin (100 ug/mL)



[View online »](#)

ORF Nucleotide Sequence:

>RG225921 representing NM_001130706
 Red=Cloning site Blue=ORF Green=Tags(s)

TTTTGTAATACGACTCACTATAGGGCGGCCGGAATTCGTCGACTGGATCCGGTACCGAGGAGATCTGCC
 GCC**CGGATCGCC**

ATGTCCTTCAGTGCCACCATTCTCTTCCCTCCAGTGGCAGCGAGGCCAGATGCTGCTGCTGCGCCT
 GTAAGAGTGAGACTAATGGAGGCAACACAGGCTCCAGGGTGGGAATCCTCCTCCAGCACCCCCATCAC
 AGTGACTGGACATGGCTTGGCTGTTTCAGAGCTCAGAGCAGCTCCTGCATGTTATCTACCAGCGGGTCGAT
 AAGGCAGTGGGTTTGGCTGAAGCTGCTCTGGGCTTGCCAGGGCCAACAATGAGTTGTTAAACGCTCCTCC
 AGGAGGAAGTGGGTGACCTGAGGCAAGGAAAGTGTCCATCCCTGATGAAGATGGGGAAAGCCGGGCACA
 TAGTTCCTCCACCTGAGGAGCCTGGGCTCTCAAGGAAAGTCCCGGGAAGCCTTTAAGGCTCTGTCTGCC
 GTGGAAGAGGAGTGTGACAGCGTGGCAGCGCGTGCAGGTGGTATTGAGGAGCTGCGGCAGCTGGGAG
 CAGCCTCAGTGGGCTGGGCTTTGGGCTTCCAGCAACTCAGAGGGACATGCGGCTCCAGGGTGCAC
 GCTGGCTGCCAGCGAGGGCGCCCTGCTCAATCCTCTGGTGGATGATTACGTGGCCTCTGAGGGTGC
 GTACAGCGAGTTCGGTCCCTGCTTATGCCAAGCAACTCTCACCAGCCACACAACCTGGCAATCCAGCGGG
 CAACCCAGAGACAGGACCAGAAAATGGAACCAAGCTGCCACCACCCCGCCTGAGGACATGCTCAATGC
 CGCTGCTGCGCTGGACAGTGCCTTGAAGAGTCAAGCCCTGGGAGCACTGGGAGCTGAGACACTCTTA
 GGGCTGACCGTTTCCCATGACAGGACCAGGAAGTGGGAGAAAGAACTCCAGGCGCAAGCGGGATCTTG
 TACTCTTAAACTGGTCCACAATGTGCATAACCCACATACCAATGACAAGAGATTCAATGGGTCTGAAAG
 CATCAAGTCTCTTGAATATTTTCAGTAGTGAAGTTTCTTCTGGAAAAGCTCAAGCAAGAGCTGGTGACC
 AGTCCCCACAATTACACTGATAAGGAGCTAAAAGGAGCCTGTGTGGCCTACTTCTTACTAAGAGCGCTG
 AGTACCGCAACTCCCTGAACCCCTTTAAGGCCCTGAAGGAAAAAGAGGAGAAGAACTTCAAGAGCGCG
 ATATCGGCTTTTTGCCAACCAGTCCAGTATCATGAGGCATTTTGGACCTGAGGACCAACGCTGTGGAAT
 GATGTGACAGAGAACTGATGTCAGATGAAGAGGACAGTCTTAACGAGCCAGGTGTGTTGGTGGCCGCC
 CTCCCGTTTCCGGGCCAGCGCCTCACAGAGCTCTGCTACCACCTGGATGCTAACTCTAAGCATGGCAC
 CAAAGCCAACCGTGTGTATGGGCTCCCTCAGACAGACTGCCTTCTGCTGAAGCCAGCTCCTTCCACCA
 GAACCTTACAATCTAATTTCCAAGAAGAGGAAGATGAGGGAGGGGATGAGAATGCACCTGGCTCCCAT
 CTTTTGACCAACCCACAAAACCTGCTGTCTGACTTGAACCTATTCAATGAAATCAAGGTGAAAAGGA
 TGAA

ACGCGTACGCGGCCGCTCGAG – GFP Tag – GTTTAA

Protein Sequence:

>RG225921 representing NM_001130706
 Red=Cloning site Green=Tags(s)

MSFSATILFSPPSGSEARCCCKSETNGGNTGSQGGNPPPSTPITVTGHGLAVQSSEQLLHVYQQRVD
 KAVGLAEAAALGLARANNELLKRLEEVGDLRQKVSIPDEDGESRAHSSPPEEPGLKESPGAEAFKALSA
 VEEECDSVSGSVQVVEELRQLGAASVGPGLGFPATQRDMRLPGCTLAASEAAPLLNPLVDDYVASEGA
 VQRVLPAYAKQLSPATQLAIQRATPETGPENGTCLPPRPEDMLNAAAALDSALEESGPGSTGELRHSL
 GLTVSPCRTRGSGQKNSRRKRDVL SKL VHNVNHITNDKRFNGSESIKSSWNI SVVKFLLKQELVT
 SPHNYTDKELKGACVAYFLTKRREYRNSLNPFKGLKEKEEKKLSRRYRLFANRSSIMRHF GPEDQRLWN
 DVTEELMSDEEDSLNEPGVWVARPPRFRAQRL TELCYHLDANSKHGTKANRVYGPSPDRLP SAEQLLPP
 ELYNPNFQEEDEGGDENAPGSPSFDQPHKTCCPDLNSFIEIKVEKDE

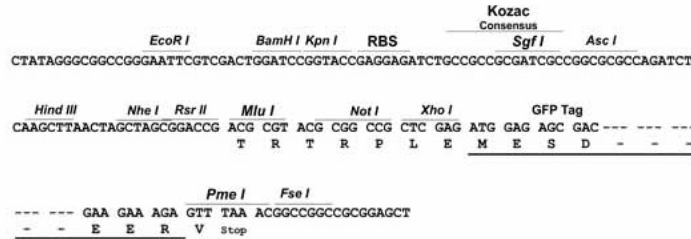
TRTRPLE – GFP Tag – V

Restriction Sites:

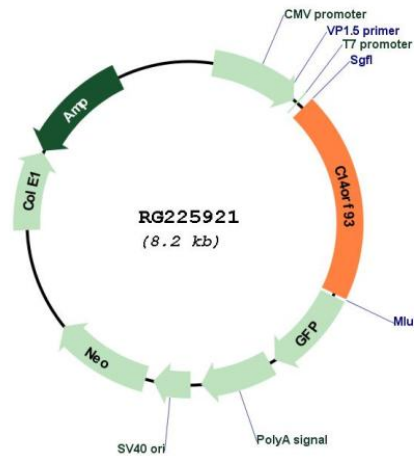
Sgfl-MluI

Cloning Scheme:

Cloning sites used for ORF Shutting:



Plasmid Map:



ACCN:	NM_001130706
ORF Size:	1614 bp
OTI Disclaimer:	The molecular sequence of this clone aligns with the gene accession number as a point of reference only. However, individual transcript sequences of the same gene can differ through naturally occurring variations (e.g. polymorphisms), each with its own valid existence. This clone is substantially in agreement with the reference, but a complete review of all prevailing variants is recommended prior to use. More info
OTI Annotation:	This clone was engineered to express the complete ORF with an expression tag. Expression varies depending on the nature of the gene.
Components:	The ORF clone is ion-exchange column purified and shipped in a 2D barcoded Matrix tube containing 10ug of transfection-ready, dried plasmid DNA (reconstitute with 100 ul of water).
Reconstitution Method:	<ol style="list-style-type: none">1. Centrifuge at 5,000xg for 5min.2. Carefully open the tube and add 100ul of sterile water to dissolve the DNA.3. Close the tube and incubate for 10 minutes at room temperature.4. Briefly vortex the tube and then do a quick spin (less than 5000xg) to concentrate the liquid at the bottom.5. Store the suspended plasmid at -20°C. The DNA is stable for at least one year from date of shipping when stored at -20°C.
RefSeq:	NM_001130706.3
RefSeq Size:	2213 bp
RefSeq ORF:	1617 bp
Locus ID:	60686
UniProt ID:	Q9H972
Cytogenetics:	14q11.2
Protein Families:	Secreted Protein