

Product datasheet for **RG225916**

ZNF397 (NM_001135178) Human Tagged ORF Clone

Product data:

Product Type:	Expression Plasmids
Product Name:	ZNF397 (NM_001135178) Human Tagged ORF Clone
Tag:	TurboGFP
Symbol:	ZNF397
Synonyms:	ZNF47; ZSCAN15
Mammalian Cell Selection:	Neomycin
Vector:	pCMV6-AC-GFP (PS100010)
E. coli Selection:	Ampicillin (100 ug/mL)



[View online »](#)

ORF Nucleotide Sequence:

>RG225916 representing NM_001135178
 Red=Cloning site Blue=ORF Green=Tags(s)

TTTTGTAATACGACTCACTATAGGGCGGCCGGAATTCGTCGACTGGATCCGGTACCGAGGAGATCTGCC
 GCC**GCGATCGCC**

ATGGCTGTGGAATCTGGAGTGATTTCAACCCTGATACCTCAGGATCCTCCGGAACAAGAACTAATACTAG
 TGAAGTAGAAGATAACTTTTCCTGGGATGAGAAATTTAAGCAGAATGGGAGTACTCAATCCTGCCAAGA
 ATTGTTTCGTAGCAATTCAGAAAATTTTCTACCAGGAGACACCTGGGCCCCGGGAGGCTCTGAGCCGA
 CTCCAGGAACCTTTGCTATCAGTGGCTAATGCCAGAGTTGCACACAAAGGAGCAGATCTTAGAACTGCTGG
 TACTGGAGCAGTTCCTGAGCATTCTGCCTGAGGAGCTGCAGATCTGGTTTACGCAACATAATCCAGAAAG
 CGGCGAGGAAGCTGTGACCCTGTTGGAGGATTTAGAGAGGGAGTTTATGACCCAGGGCAGCAGGTCCCA
 GCTAGTCCACAGGACCAGCAGTCCATGGAAGGATTTAACATGTCTCAGAGCATCCAAGAGTCAACAG
 ACATCCACCTCCAGCCCTAAAGACACAGCTGAAATCCTGGAAACCATGCCTTTCCCTAAAAGTGATTG
 TGAGAACAGTGAACAGCAACAAAAGAGGGCATCTCAGAAGAAAATCACAGGGACTCCCTCAGGAACCT
 TCAATTCGAGGAATTAGTGAGCATGAAAGCAATTTAGTGTGGAAGCAAGGAAGTGTACAGGGGAGAAAC
 TAAGATCTCCTTCCCAAGGGGGCAGTTTATGCAAGTGATCTTCAAAACAAATCTCTAGAAAAGAGAGA
 CCTTTATGATGAGGCTGAAAGATGCTTGATTCTAACTACAGACTCTATAATGTGTGAGAAAAGTTCCTCCA
 GAAGAGAGACCTTATAGATGTGATGATGTGGGCACAGCTTCAAGCAGCATTCTCTCTAACACAACATC
 AGAGAATCCATACTGGAGAAAAGCCCTATAAATGTAACCAAGTGTGGGAAGGCCTTTAGTTTGAGGTCCTA
 TCTTATTATTCATCAGAGAATTCATAGTGGTGAGAAAAGCATATGAATGTAGTGAATGTGGAAAAGCTTTC
 AATCAGAGCTCAGCCCTCATTAGACATCGAAAAATCCATACTGGTGAGAAAAGCTTGTAAATGTAATGAGT
 GTGGCAAAGCATTAGTCAAAGTTCATATCTCATTATACATCAAAGAATTCACACTGGTGAGAAAACCTTA
 TGAGTGAATGAATGTGGAAAACCTTTAGCCAGAGCTCAAACCTCATTAGACATCAGCGAATTCACACA
 GGAGAGAGACCCTATGAATGTAATGAATGTGGAAAAGCTTTCAGGCAGAGCTCAGAGCTGATTACTCATC
 AGAGAATACATAGTGGAGAGAAAACCTATGAATGTAGTGAATGTGGAAAAGCTTTCAGTTTGAGCTCAAA
 CCTTATCAGACATCAGAGAATTCATAGTGGGAGGAACCTTATCAGTGAATGAATGTGGCAAACCTTTC
 AAAAGGAGCTCAGCCCTTGTTCAGCATCAGAGAATTCATTCTGGGGATGAAGCTTATATATGTAATGAAT
 GTGGGAAGGCTTTCAGGCACAGATCGGTCCTTATGCGCCATCAAAGAGTCCACACTATAAAG

ACGCGTACGCGGCCGCTCGAG – GFP Tag – GTTTAA

Protein Sequence:

>RG225916 representing NM_001135178
 Red=Cloning site Green=Tags(s)

MAVESGVISTLIPQDPPEQELILVKVEDNFSWDEKFKQNGSTQSCQELFRQQFRKFCYQETPGPREALS
 LQELCYQWLMPELHTKEQILELLVLEQFLSILPEELQIWWQHNPESEGEAVTLLEDLREFDDPGQVVP
 ASPQGPVAVPKDLTCLRASQESTDIHLQPLKTLKSWKPCLSPKSDCENSETATKEGISEEKSQGLPQEP
 SFRGISEHESNLVWKQGSATGEKLRSPSQGGSFSQVIFTNKSLGKRDLDEAERCLILTTDSIMCQKVPP
 EERPYPYRCDVCGHSFKQHSSLTQHQRHTGKPYKCNQCGKAFSLRSYLIIHQRIHSGEKAYECSECGKAF
 NQSSALIRHRKIHTGKACKCNECGKAFSQSSYLIIHQRIHTGKPYECNECGKTFSSSKLIRHQRIHT
 GERPYECNECGKAFRQSSELITHQRIHSGEKPYECSECGKAFSLSSNLIRHQRIHSGEPEYQNECGKTF
 KRSSALVQHQRHSGDEAYICNECGKAFRHRVLMRHRVHTIK

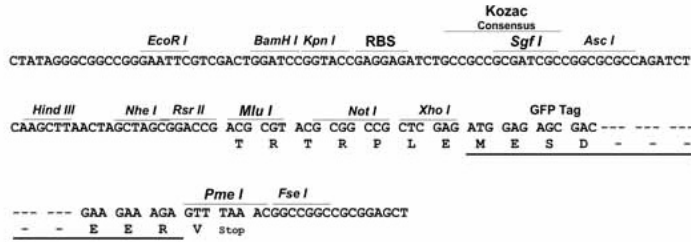
TRTRPLE – GFP Tag – V

Restriction Sites:

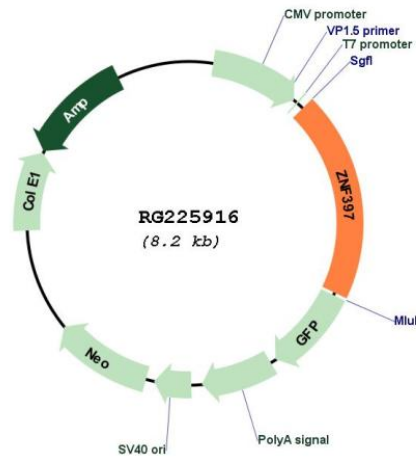
Sgfl-Mlul

Cloning Scheme:

Cloning sites used for ORF Shutting:



Plasmid Map:



ACCN:	NM_001135178
ORF Size:	1602 bp
OTI Disclaimer:	The molecular sequence of this clone aligns with the gene accession number as a point of reference only. However, individual transcript sequences of the same gene can differ through naturally occurring variations (e.g. polymorphisms), each with its own valid existence. This clone is substantially in agreement with the reference, but a complete review of all prevailing variants is recommended prior to use. More info
OTI Annotation:	This clone was engineered to express the complete ORF with an expression tag. Expression varies depending on the nature of the gene.
Components:	The ORF clone is ion-exchange column purified and shipped in a 2D barcoded Matrix tube containing 10ug of transfection-ready, dried plasmid DNA (reconstitute with 100 ul of water).
Reconstitution Method:	<ol style="list-style-type: none">1. Centrifuge at 5,000xg for 5min.2. Carefully open the tube and add 100ul of sterile water to dissolve the DNA.3. Close the tube and incubate for 10 minutes at room temperature.4. Briefly vortex the tube and then do a quick spin (less than 5000xg) to concentrate the liquid at the bottom.5. Store the suspended plasmid at -20°C. The DNA is stable for at least one year from date of shipping when stored at -20°C.
RefSeq:	NM_001135178.3
RefSeq Size:	2640 bp
RefSeq ORF:	1605 bp
Locus ID:	84307
UniProt ID:	Q8NF99
Cytogenetics:	18q12.2
Protein Families:	Transcription Factors
Gene Summary:	This gene encodes a protein with a N-terminal SCAN domain, and the longer isoform contains nine C2H2-type zinc finger repeats in the C-terminal domain. The protein localizes to centromeres during interphase and early prophase, and different isoforms can repress or activate transcription in transfection studies. Multiple transcript variants encoding different isoforms have been found for this gene. Additional variants have been described, but their biological validity has not been determined. [provided by RefSeq, Oct 2009]