

Product datasheet for **RG225899**

NCF2 (NM_001127651) Human Tagged ORF Clone

Product data:

Product Type:	Expression Plasmids
Product Name:	NCF2 (NM_001127651) Human Tagged ORF Clone
Tag:	TurboGFP
Symbol:	NCF2
Synonyms:	NCF-2; NOXA2; P67-PHOX; P67PHOX
Mammalian Cell Selection:	Neomycin
Vector:	pCMV6-AC-GFP (PS100010)
E. coli Selection:	Ampicillin (100 ug/mL)



[View online »](#)

ORF Nucleotide Sequence:

>RG225899 representing NM_001127651
 Red=Cloning site Blue=ORF Green=Tags(s)

TTTTGTAATACGACTCACTATAGGGCGGCCGGAATTCGTCGACTGGATCCGGTACCGAGGAGATCTGCC
 GCC**CGGATCGCC**

ATGTCCTGGTGGAGCCATCAGCCTCTGGAATGAAGGGGTGCTGGCAGCGGACAAGAAGGACTGGAAGG
 GAGCCCTGGATGCCTTCAGTGCCGTCCAGGACCCCACTCCCGATTGCTTCAACATTGGCTGCATGTA
 CACTATCCTGAAGAACATGACTGAAGCAGAGAAGGCCTTTACCAGAAGCATTAAACCGAGACAAGCACTTG
 GCAGTGGCTTACTCCAACGAGGGATGCTCTACTACCAGACAGAGAAATATGATTTGGCTATCAAAGACC
 TTAAGAAGCCTTGATTAGCTTCGAGGGAACCAGCTGATAGACTATAAGATCCTGGGGCTCCAGTTCAA
 GCTGTTTGCCTGTGAGGTGTTATATAACATTGCTTTTCATGTATGCCAAGAAGGAGGAATGGAAAAAGCT
 GAAGAACAGTTAGCATTGGCCACGAGCATGAAGTCTGAGCCAGACATCCAAAATCGACAAGGCGATGG
 AGTGTGCTGGAAGCAGAAGCTATATGAGCCAGTGGTATCCCTGTGGGCAAGCTGTTTCGACCAATGA
 GAGACAAGTGGCTCAGCTGGCCAAGAAGGATTACCTAGGCAAGGCGACGTCGTGGCATCTGTGGTGGAT
 CAAGACAGTTTCTCTGGGTTTGCCTCTGCAACCACAGGCAGCTGAGCCTCCACCCAGACCGAAAACCC
 CAGAGATCTTCAGGGCTCTGGAAGGGGAGGCTCACCGTGTGCTATTTGGGTTTGTGCCTGAGACAAAAGA
 AGAGCTCCAGGTCATGCCAGGGAACATTGTCTTTGTCTTGAAGAAGGGCAATGATAACTGGGCCACGGTC
 ATGTTCAACGGGCAGAAGGGGCTTGTCCCTGCAACTACCTTGAACCAAGTGGAGCTGCGGATCCACCCTC
 AGCAGCAGCCCCAGGAGGAAAGCTCTCCGCAGTCCGACATCCAGCTCCTCCTAGTTCCAAAGCCCTCG
 AAGACCCAGCTGTCACCAGGCCAGAAACAAAAAGAAGAGCCTAAGGAAGTGAAGCTCAGTGTCCCATG
 CCCTACACACTCAAGGTGCACTACAAGTACACGGTAGTCATGAAGACTCAGCCCGGGCTCCCTACAGCC
 AGGTCGGGACATGGTGTCTAAGAACTGGAGCTCCGGCTGGAACACACTAAGCTGAGCTATCGGCTCG
 GGACAGCAATGAGCTGGTGCCCTTTCAGAAGACAGCATGAAGGATGCCTGGGGCCAGGTGAAAACTAC
 TGCTGACTCTGTGGTGTGAGAACACAGTGGGTGACCAAGGCTTTCCAGATGAACCAAGGAAAGTGA
 AAGCTGATGCTAATAACAGACAACAGAACCTCAGCTTAAAGAAAGGCAGCCAAGTGGAGGCACTCTTCAG
 TTATGAGGCTACCAACAGAGGACCTGGAGTTTCAGGAAGGGGATATAATCCTGGTGTATCAAAGGTG
 AATGAAGAATGGCTGGAAGGGGAGTGCAAAGGGAAGTGGGCATTTTCCCAAAGTTTTTGTGAAGACT
 GCGCAACTACAGATTTGGAAAGCACTCGGAGAGAAGTC

ACGCGTACGCGGCCGCTCGAG - GFP Tag - GTTTAA

Protein Sequence:

>RG225899 representing NM_001127651
 Red=Cloning site Green=Tags(s)

MSLVEAISLWNEGVLAADKKDWKALDAFSAVQDPHSRICFNIGMYTILKNMTEAEKAFTRSINRDKHL
 AVAYFQRGMLYYQTEKYDLAIKDLKEALIQLRGNQLIDYKILGLQFKLFACEVLNYIAFMYAKKEEWKKA
 EEQLALATSMKSEPRHSKIDKAMECVWKQKLYEPVVIPVGKLFPRNERQVAQLAKKDYLGKATVVASVVD
 QDSFSGFAPLQPQAAEPPRPKTPEIFRALEGEAHRVLFGFVPETKEELQVMPGNIVFVLKKGNDNWATV
 MFNGQKGLVPCNYLEPVELRIHPQQPQEESPQSDIPAPPSSKAPGRPQLSPGQKQKEEPKEVKLSVPM
 PYTLKVHYKYTVVMKTQPGLPYSQVRDMVSKLELRLEHTKLSYRPRDSNELVPLSEDSMKDAWGQVKNY
 CLTLWCENTVGDQGFPEPKSEKADANNQTTEPQLKKGQSVEALFSYEATQPEDLEFQEGDIILVLSKV
 NEEWLEGECKGKVGIFPKVFVEDCATTDLSTREV

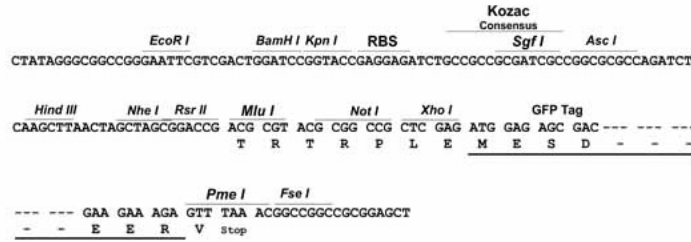
TRTRPLE - GFP Tag - V

Restriction Sites:

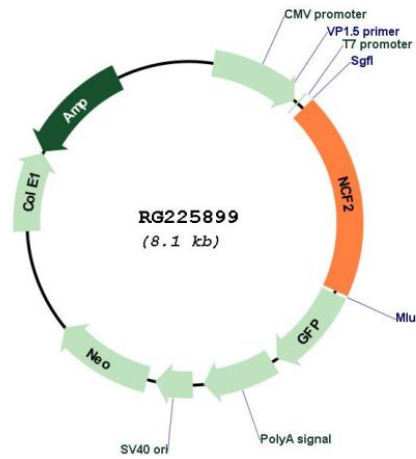
Sgfl-MluI

Cloning Scheme:

Cloning sites used for ORF Shutting:



Plasmid Map:



ACCN:	NM_001127651
ORF Size:	1578 bp
OTI Disclaimer:	The molecular sequence of this clone aligns with the gene accession number as a point of reference only. However, individual transcript sequences of the same gene can differ through naturally occurring variations (e.g. polymorphisms), each with its own valid existence. This clone is substantially in agreement with the reference, but a complete review of all prevailing variants is recommended prior to use. More info
OTI Annotation:	This clone was engineered to express the complete ORF with an expression tag. Expression varies depending on the nature of the gene.
Components:	The ORF clone is ion-exchange column purified and shipped in a 2D barcoded Matrix tube containing 10ug of transfection-ready, dried plasmid DNA (reconstitute with 100 ul of water).
Reconstitution Method:	<ol style="list-style-type: none">1. Centrifuge at 5,000xg for 5min.2. Carefully open the tube and add 100ul of sterile water to dissolve the DNA.3. Close the tube and incubate for 10 minutes at room temperature.4. Briefly vortex the tube and then do a quick spin (less than 5000xg) to concentrate the liquid at the bottom.5. Store the suspended plasmid at -20°C. The DNA is stable for at least one year from date of shipping when stored at -20°C.
RefSeq:	NM_001127651.3
RefSeq Size:	2256 bp
RefSeq ORF:	1581 bp
Locus ID:	4688
UniProt ID:	P19878
Cytogenetics:	1q25.3
Protein Families:	Druggable Genome
Protein Pathways:	Leukocyte transendothelial migration
Gene Summary:	This gene encodes neutrophil cytosolic factor 2, the 67-kilodalton cytosolic subunit of the multi-protein NADPH oxidase complex found in neutrophils. This oxidase produces a burst of superoxide which is delivered to the lumen of the neutrophil phagosome. Mutations in this gene, as well as in other NADPH oxidase subunits, can result in chronic granulomatous disease, a disease that causes recurrent infections by catalase-positive organisms. Alternative splicing results in multiple transcript variants encoding different isoforms. [provided by RefSeq, Jun 2010]