

Product datasheet for **RG225894**

ZNF286 (ZNF286A) (NM_001130842) Human Tagged ORF Clone

Product data:

Product Type:	Expression Plasmids
Product Name:	ZNF286 (ZNF286A) (NM_001130842) Human Tagged ORF Clone
Tag:	TurboGFP
Symbol:	ZNF286A
Synonyms:	ZNF286
Mammalian Cell Selection:	Neomycin
Vector:	pCMV6-AC-GFP (PS100010)
E. coli Selection:	Ampicillin (100 ug/mL)



[View online »](#)

ORF Nucleotide Sequence:

>RG225894 representing NM_001130842
 Red=Cloning site Blue=ORF Green=Tags(s)

TTTTGTAATACGACTCACTATAGGGCGGCCGGAATTCGTCGACTGGATCCGGTACCGAGGAGATCTGCC
 GCC**CGCATCGCC**

ATGGAGACAGATTTGGCTGAAATGCCTGAGAAAGGAGCTCTGTCTTCCCAGGATTCTCCCCATTTCCAAG
 AGAAGAGCACAGAAGAGGGAGAAGTGGCTGCTCTGCGCCTCACGGCCAGATCCCAGGAAACAGTGACATT
 CAAGGATGTGGCCATGGACTTTACACCAGAGGAGTGGGGGAAGCTGGATCCTGCACAAAGGGATGTGATG
 CTGGAGAACTATAGGAACCTAGTCTCACTTTGGCTTCCAGTTTCCAAACCTGAGAGCTACAACCTGGAGA
 ATGAAAAAGAACCATTGAAGCTTGAGAGAAAAGCCCCAAAAGCAGCTATTCAGACATGGAGACTAGACC
 ACAGAGCAAGGATTCACTTCAGTGCAAGATTTTTCCAAAGCAGAATCATGCAAAGTTGCAATAATAGAC
 AGACTGACACGGAATAGTGTCTATGACTCTAAGTGGAAAGCAGCCCTTGAATGTGAAAATGGTTAGAGA
 ATCAGCAAGGAAATCAGGAGAGACATTTGAGAGAAATGTTCACTCACATGAATTCCTCTCTGAGGAAAC
 AGACCATAAGCATGATGTATACTGGAAAAGCTTCAATCAGAAATCTGTCCTTATCACTGAAGACAGAGTT
 CCCAAAGGATCTTATGCCTTCCATACACTTGAAAAAGCTTGAAACAAAATCAAACCTTAATGAAAAAGC
 AGAGAACTTATAAAGAGAAAAACCTCATAAATGTAATGATTGTGGTGAACCTTTCACCTACCATTCACT
 GCTTATTCGACACCAGAGAGTCCATACTGGAGAGAAAACCTATACCTGCAATGAATGTGGGAAATCTTTT
 AGCCACAGAGCTAATTTAACTAAACACCAGAGAACTCATACTAGAATTCTCTTTGAATGCAGTGAATGCA
 AGAAAACCTTCACAGAAAGCTCATCCCTTGCAACACATCAGAGAATTCACGTTGGAGAGAGACCTTATGA
 ATGCAATGAATGTGGGAAAGTTTTAATCGAAGTACACATCTTGTGCAGCATCAGTTGATTACTACTGGA
 GTGAAGCCTTATGAATGTAATGAATGTGATAAAGCTTTTATTTCATTCATCAGCACTCATTAAACATCAA
 GAACCTACTGGAGAGAAACCTTATAAATGTCAAGAATGTGGGAAAGCCTTTAGCCATTGCTCATCCCT
 AACTAAGCATCAGAGAGTTCATACTGGAGAAAAGCCATATGAATGCAGTGAATGTGGAAAAACTTTTAGT
 CAGAGCACACATCTTGTCAACATCAGAGAATTCACACTGGAGAGAAAACCTATGAGTGAATGAATGTG
 GAAAAACCTTCAGCCGAGCTCCAATTTTGTAAACATCAAAGAATTCATATTGGAAAGAAAACCGTACAA
 ATGTAGCGAGTGTGGAAAAGCCTTCATTATTCATCAGCTCTCATTCAACATCAGAGAATTCATACCGGA
 GAGAAAACCTTTAGATGTAATGAGTGTGGGAAAAGCTTTAAGTGCAGTTCATCTCTCATCAGACATCAA
 GAGTTCACACTGAAGAGCAACCC

ACGCGTACGCGGCCGCTCGAG – GFP Tag – GTTTAA

Protein Sequence:

>RG225894 representing NM_001130842
 Red=Cloning site Green=Tags(s)

METDLAEMPEK GALSSQDSPHFQEKSTEEGEVAALRLTARSQETVTFKDVAMDFTPPEEWGKLDPAQRDVM
 LENYRNLVSLWLPVSKPESYNLENGKEPLKLERKAPKSSYSMDMETRPQSKDSTSVQDFSKAESCKVAIID
 RLTRNSVYDSNLEAALECNWLENQQGNQERHLREMFTHMNSLSEETDCHKHDVYWKSFNQKSVLITEDRV
 PKGSYAFHTLEKSLKQKSNLMKKQRTYKEKPKHCNDGELFTYHSVLIRHQRVHTGEKPYTCNECGKSF
 SHRANLTKHQRTHTRILFECSECKKTFTESSSLATHQRIHVGERPYECNECGKGFNRSTHLVQHQLIHTG
 VKPYECNECDKAFIHSSALIKHQRTHTGEKPYKQCEGKAFSHCSSLTKHQRVHTGEKPYECSECGKTF
 QSTHLVQHQRHTHTGEKPYECNECGKTFSRSSNFAKHQRIHIGKKPYKCEGKAFIHSSALIQHQRTHTG
 EKPFRNECGKSFKCSSSLIRHQRVHTEEQP

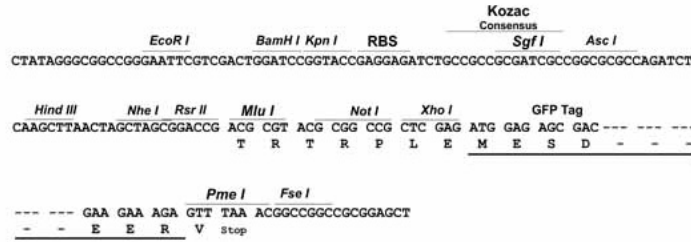
TRTRPLE – GFP Tag – V

Restriction Sites:

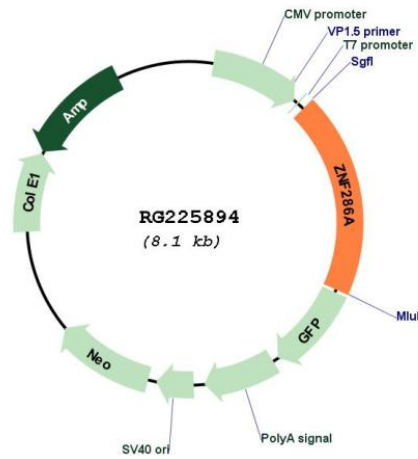
Sgfl-MluI

Cloning Scheme:

Cloning sites used for ORF Shutting:



Plasmid Map:



ACCN:	NM_001130842
ORF Size:	1563 bp
OTI Disclaimer:	The molecular sequence of this clone aligns with the gene accession number as a point of reference only. However, individual transcript sequences of the same gene can differ through naturally occurring variations (e.g. polymorphisms), each with its own valid existence. This clone is substantially in agreement with the reference, but a complete review of all prevailing variants is recommended prior to use. More info
OTI Annotation:	This clone was engineered to express the complete ORF with an expression tag. Expression varies depending on the nature of the gene.
Components:	The ORF clone is ion-exchange column purified and shipped in a 2D barcoded Matrix tube containing 10ug of transfection-ready, dried plasmid DNA (reconstitute with 100 ul of water).
Reconstitution Method:	<ol style="list-style-type: none">1. Centrifuge at 5,000xg for 5min.2. Carefully open the tube and add 100ul of sterile water to dissolve the DNA.3. Close the tube and incubate for 10 minutes at room temperature.4. Briefly vortex the tube and then do a quick spin (less than 5000xg) to concentrate the liquid at the bottom.5. Store the suspended plasmid at -20°C. The DNA is stable for at least one year from date of shipping when stored at -20°C.
RefSeq:	NM_001130842.2
RefSeq Size:	5472 bp
RefSeq ORF:	1566 bp
Locus ID:	57335
UniProt ID:	Q9HBT8
Cytogenetics:	17p12
Protein Families:	Transcription Factors
Gene Summary:	May be involved in transcriptional regulation.[UniProtKB/Swiss-Prot Function]