

## Product datasheet for **RG225866**

### Upstream Binding Protein 1 (UBP1) (NM\_001128160) Human Tagged ORF Clone

#### Product data:

Product Type:	Expression Plasmids
Product Name:	Upstream Binding Protein 1 (UBP1) (NM_001128160) Human Tagged ORF Clone
Tag:	TurboGFP
Symbol:	Upstream Binding Protein 1
Synonyms:	LBP-1a; LBP-1B; LBP1A; LBP1B
Mammalian Cell Selection:	Neomycin
Vector:	pCMV6-AC-GFP (PS100010)
E. coli Selection:	Ampicillin (100 ug/mL)



[View online »](#)

**ORF Nucleotide Sequence:**

>RG225866 representing NM\_001128160  
 Red=Cloning site Blue=ORF Green=Tags(s)

TTTTGTAATACGACTCACTATAGGGCGGCCGGGAATTCGTCGACTGGATCCGGTACCGAGGAGATCTGCC  
 GCCCGCATCGCC

ATGGCCTGGGTGCTCAAGATGGACGAGGTGATCGAGTCCGGGCTGGTGCACGACTTCGACGCCAGCCTCT  
 CGGGCATCGGGCAGGAAC TGGGCCCGCGCTTACAGCATGAGTGTCTTGGCATTGCCATTTTCAA  
 GCAGGAAGATTCCAGCCTTCCATTGGATGGTGAACAGAGCACCCACCCTTTCAGTATGTGATGTGTGCT  
 GCAACGTCACCAGCAGTAAAACGCATGATGAAACGCTTACTTATTTGAACCAAGGTCAGTCATATGAAA  
 TTCGGATGCTGGATAATCGGAAAATGGGTGATGCCTGAGATCAATGGAAAATTAGTAAAGAGCATCAT  
 AAGGGTTGTATTCCATGACAGACGGCTACAATACACAGAGCATCAGCAACTTGAAGGATGGAAGTGAAT  
 CGCCCAGGAGACAGACTTCTTGATTTAGATATTCCAATGTCTGTGGGAATAATTGACACAAGGACGAATC  
 CAAGCCAGTTAAATGCGGTTGAATTTCTGTGGGACCCAGCAAAACGCACCTCTGCTTTCATTGAGTACA  
 CTGCATCAGCACAGAATTTACTCCAGGAAGCAGGAGGTGAAAAGGGAGTGCCCTTTAGGATCCAGGTT  
 GACACCTTAAAGCAGAATGAAAATGGAGAATACACAGATCATCTACACTAGCTAGCTGCCAAATCAAAG  
 TTTTAAAGCCTAAAGGTGCAGACAGGAAACAAAAAAGTACCCGAGAGAAGATGGAGAAGAGAACAGCTCA  
 TGAAAAAGAAAAGTATCAGCCGCTCTATGATACCAATCCTCACAGAGTGTCTCCGTGGCCCGATGCC  
 CCCACAGCCTATGTGAATAACAGCCCTTCCCAGCGCCCACTTTCACCTCCCACAGCAGAGCACTTGCA  
 GTGTCCCAGACAGCAATTTCTTCCCCAAATCATCAGGGAGATGGAGCTTACAGACCTCTGGTGAACA  
 AATTCAGCCTTCAGCTACGATCCAGGAAACACAGCAATGGCTGCTCAAAAACAGATTCTCTTCTACACA  
 AGACTGTTCTCTAATTTTTCAGGTGCCGACTTATTAAGTCAAGGTCGTTAGACCCGTTAACCATCTA  
 GTGCAGCCGATGGAATTCGGCTCTATAATTCACCTGAAAGTCAAGGTCGTTAGACCCGTTAACCATCTA  
 TGTCTGCCGGGAGCAGCCAAGCAGCACAGTGTGCAAGGGCAGCAGCAAGCTGCAAGCAGTGAAGCGGAG  
 AATGGCAGTGGGGCACCCATGTTTATCATGCAATCTACTTGAAGAAATGATTGCCTCAGAAGTTGCTC  
 GAAAACCTGCGCTGGTGTAAATATCCCTCTCCACCAAATTAATCAGGTTTACAGACAGGTTCCACCCGG  
 TATTCACATTCTGTTAGTGATCAGATGGTTCAGAATTTTCAAGATGAGAGTTGTTTTTTATTCTCCACA  
 GTAAAAGCTGAAAGTAGTGATGGCATCCACATAATTTTGAAG

ACGCGTACGCGGCCGCTCGAG – GFP Tag – GTTTAA

**Protein Sequence:**

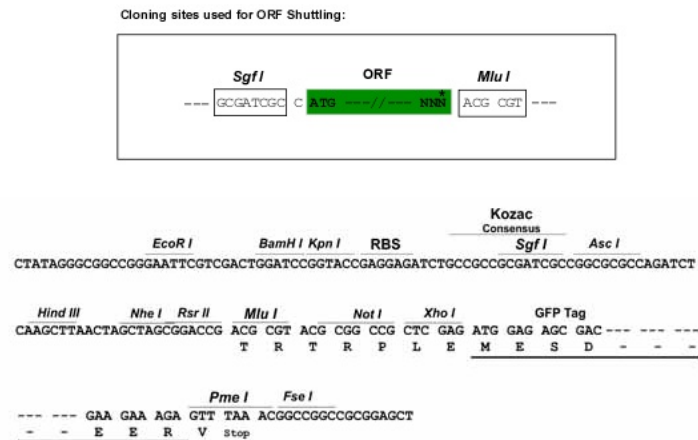
>RG225866 representing NM\_001128160  
 Red=Cloning site Green=Tags(s)

MAWVLKMDEVIESGLVHDFDASLSGIGQELGAGAYSMSDVLALPIFKQEDSSLPLDGETEHPPFYVMCA  
 ATSPAVKLHDETLTYLNQGSYERMLDNRKMGDMPEINGKLVKSIIRVVFHRRRLQYTEHQLEGWKWN  
 RPDRLDLDIPMSVGIIDTRTNPSQLNAVEFLWDPKRTSAFIQVHCISTEFTPRKHGGEKGVPFRIQV  
 DTFKQENGEYTDHLHSASCQIKVFKPKGADRKQKTDREKMEKRTAHEKEKYQPSYDITLILTECSPWDA  
 PTAYVNNSPSPAPFTTSPQQSTCSVPDSNSSSPNHQGDGASQTSGEQIQPSATIQETQQWLLKNRFSST  
 RLFNFSGADLLKLTAKEDLVQICGAADGIRLYNSLKSRSVRPRLTIYVCREQPSSTVLQGGQQAASSASE  
 NGSAPYYVYHAIYLEEMIASEVARKLALVFNIPLHQINQVYRQGPTEGHIHILVSDQMVQNFQDESCFLFST  
 VKAESSDGIHIILK

TRTRPLE – GFP Tag – V

**Restriction Sites:**

Sgfl-Mlul

**Cloning Scheme:**


**ACCN:** NM\_001128160

**ORF Size:** 1512 bp

**OTI Disclaimer:** The molecular sequence of this clone aligns with the gene accession number as a point of reference only. However, individual transcript sequences of the same gene can differ through naturally occurring variations (e.g. polymorphisms), each with its own valid existence. This clone is substantially in agreement with the reference, but a complete review of all prevailing variants is recommended prior to use. [More info](#)

**OTI Annotation:** This clone was engineered to express the complete ORF with an expression tag. Expression varies depending on the nature of the gene.

**Components:** The ORF clone is ion-exchange column purified and shipped in a 2D barcoded Matrix tube containing 10ug of transfection-ready, dried plasmid DNA (reconstitute with 100 ul of water).

**Reconstitution Method:**

1. Centrifuge at 5,000xg for 5min.
2. Carefully open the tube and add 100ul of sterile water to dissolve the DNA.
3. Close the tube and incubate for 10 minutes at room temperature.
4. Briefly vortex the tube and then do a quick spin (less than 5000xg) to concentrate the liquid at the bottom.
5. Store the suspended plasmid at -20°C. The DNA is stable for at least one year from date of shipping when stored at -20°C.

**RefSeq:** [NM\\_001128160.1](#), [NP\\_001121632.1](#)

**RefSeq Size:** 4054 bp

**RefSeq ORF:** 1515 bp

**Locus ID:** 7342

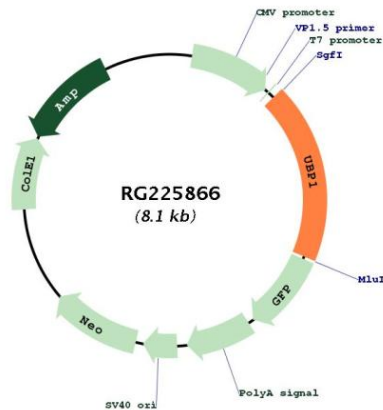
**UniProt ID:** [Q9NZI7](#)

**Cytogenetics:** 3p22.3

**Protein Families:** Transcription Factors

**Gene Summary:** Functions as a transcriptional activator in a promoter context-dependent manner. Modulates the placental expression of CYP11A1. Involved in regulation of the alpha-globin gene in erythroid cells. Activation of the alpha-globin promoter in erythroid cells is via synergistic interaction with TFCP2 (By similarity). Involved in regulation of the alpha-globin gene in erythroid cells. Binds strongly to sequences around the HIV-1 initiation site and weakly over the TATA-box. Represses HIV-1 transcription by inhibiting the binding of TFIIID to the TATA-box.[UniProtKB/Swiss-Prot Function]

**Product images:**



Circular map for RG225866