

Product datasheet for **RG225815**

CTSA (NM_001127695) Human Tagged ORF Clone

Product data:

Product Type:	Expression Plasmids
Product Name:	CTSA (NM_001127695) Human Tagged ORF Clone
Tag:	TurboGFP
Symbol:	CTSA
Synonyms:	GLB2; GSL; NGBE; PPCA; PPGB
Mammalian Cell Selection:	Neomycin
Vector:	pCMV6-AC-GFP (PS100010)
E. coli Selection:	Ampicillin (100 ug/mL)



[View online »](#)

ORF Nucleotide Sequence:

>RG225815 representing NM_001127695
 Red=Cloning site Blue=ORF Green=Tags(s)

TTTTGTAATACGACTCACTATAGGGCGGCCGGAATTCGTCGACTGGATCCGGTACCGAGGAGATCTGCC
 GCCCGCATCGCC

ATGATCCGAGCCGCGCCGCCGCTGTTCTGCTGCTGCTGCTGCTGCTGCTGCTGCTAGTGTCTGGCGCT
 CCCGAGGCGAGGCAGCCCCGACCAGGACGAGATCCAGCCCTCCCCGGGCTGGCCAAGCAGCCGCTTTT
 CCGCCAGTACTCCGGTACCTCAAAGGCTCCGGCTCCAAGCACCTCCACTACTGTTTGTGGAGTCCCAG
 AAGGATCCCGAGAACAGCCCTGTGGTGTCTTGGCTCAATGGGGTCCCGGCTGCAGCTACTAGATGGGC
 TCCTCACAGAGCATGGCCCTTCTGGTCCAGCCAGATGGTGTACCCTGGAGTACAACCCCTATTCTTG
 GAATCTGATTGCCAATGTGTTATACCTGGAGTCCCAGCTGGGGTGGCTTCTCTACTCCGATGACAAG
 TTTTATGCAACTAATGACTGAGGTGCGCCAGAGCAATTTGAGGCCCTCAAGATTTCTCCGCCTCT
 TCCGGAGTACAAGAACAACAACCTTTCTGACCGGGGAGAGCTATGCTGGCATCTACATCCCCACCT
 GGCCGTGCTGGTCATGCAGGATCCAGCATGAACCTTCAGGGGCTGGCTGTGGCAATGGACTCTCTCC
 TATGAGCAGAATGACAATCCCTGGTCTACTTTGCCTACTACCATGGCCTTCTGGGGAACAGGCTTTGGT
 CTCTCTCCAGACCCACTGCTGCTCTAAAACAAGTGAACCTTCTATGACAACAAGACCTGGAATGCGT
 GACCAATCTTCAGGAAGTGGCCCGCATCGTGGCAACTCTGGCCTCAACATCTACAATCTCTATGCCCCG
 TGTGCTGGAGGGTGGCCAGCCATTTTAGGTATGAGAAGGACTGTTGTGGTCCAGGATTTGGGCAACA
 TCTTCACTCGCCTGCCACTCAAGCGGATGTGGCATCAGGCACTGCTGCGCTCAGGGGATAAAGTGGCGAT
 GGACCCCCCTGCACCAACAACAGCTGCTTCCACCTACCTCAACAACCCGTACGTGGGAAGGCCCTC
 AACATCCCGGAGCAGCTGCCACAATGGGACATGTGCAACTTTCTGGTAACTTACAGTACCGCCGCTCT
 ACCGAAGCATGAACCTCCAGTATCTGAAGCTGTTAGCTCACAGAAATACCAGATCTTATATATGAGG
 AGATGTAGACATGGCCTGCAATTTTATGGGGATGAGTGGTTTGTGGATTCCCTCAACCAGAAGATGGAG
 GTGCAGCGCCGGCCCTGTTAGTGAAGTACGGGACAGCGGGAGCAGATTGCCGCTTCTGTAAGGAGT
 TCTCCACATCGCCTTTCTCACGATCAAGGGCGCCGCCACATGGTTCACCGACAAGCCCTCGCTGC
 CTTACCATGTTCTCCGCTTCTGAACAAGCAGCCATAC

ACGCGTACGCGGCCGCTCGAG – GFP Tag – GTTAA

Protein Sequence:

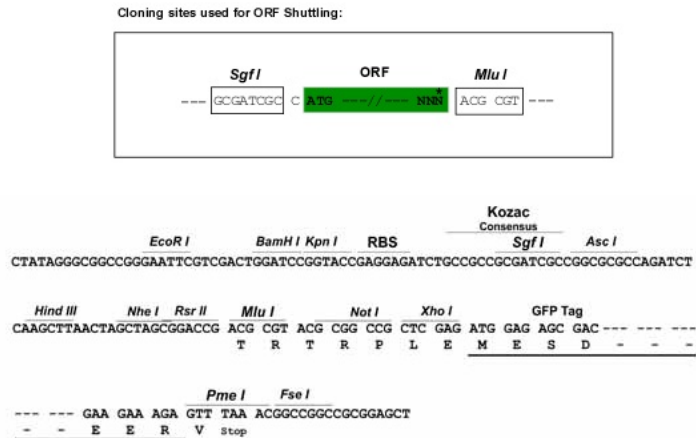
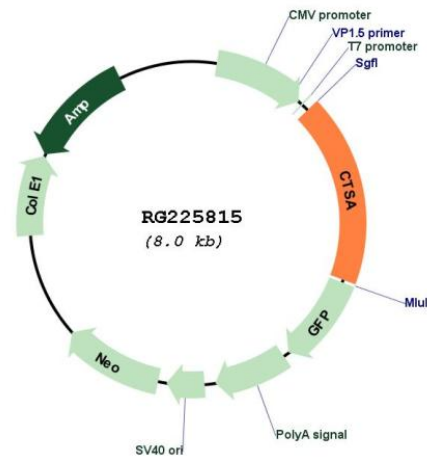
>RG225815 representing NM_001127695
 Red=Cloning site Green=Tags(s)

MIRAAPPPLLLLLLLLLLVSWSRGEAAPDQDEIQRPLGLAKQPSFRQYSGYLKGSKSHLHYWFVESQ
 KDPENSPVVLWLNNGPGCSSLDGLLTEHGPFLVQPDGVTL EYNPYSWNLIANVLYLESPAGVGFYSDDK
 FYATNDTEVAQSNFEALQDFRFLFPEYKNNKFLTGESYAGIYIPTLAVLVMQDPSMNLQGLAVGNLSS
 YEQNDNSLVYFYAYHGLLGNRLWSSLQTHCCSQNKCNFYDNKDLECVTNLQEVARIVGNSGLNIYNLYAP
 CAGGVPSHFVRYEKDTVVVQDLGNIFTRLPLKRMWHQALLRSGDKVRMDPPCTNTTAASTYLNNPYVRKAL
 NIPEQLPQWDMCNFLVNLQYRRLYRSMNSQYLKLLSSQKYQILLYNGDVDMACNFMGDEWFVDSL NQKME
 VQRRPWLVKYGDSGEQIAGVFKEFSHIAFLT IKGAGHMVPTDKPLAAFTMFSRFLNKQPY

TRTRPLE – GFP Tag – V

Restriction Sites:

Sgfl-Mlul

Cloning Scheme:

Plasmid Map:


ACCN: NM_001127695

ORF Size: 1440 bp

OTI Disclaimer: The molecular sequence of this clone aligns with the gene accession number as a point of reference only. However, individual transcript sequences of the same gene can differ through naturally occurring variations (e.g. polymorphisms), each with its own valid existence. This clone is substantially in agreement with the reference, but a complete review of all prevailing variants is recommended prior to use. [More info](#)

OTI Annotation: This clone was engineered to express the complete ORF with an expression tag. Expression varies depending on the nature of the gene.

Components: The ORF clone is ion-exchange column purified and shipped in a 2D barcoded Matrix tube containing 10ug of transfection-ready, dried plasmid DNA (reconstitute with 100 ul of water).

Reconstitution Method:

1. Centrifuge at 5,000xg for 5min.
2. Carefully open the tube and add 100ul of sterile water to dissolve the DNA.
3. Close the tube and incubate for 10 minutes at room temperature.
4. Briefly vortex the tube and then do a quick spin (less than 5000xg) to concentrate the liquid at the bottom.
5. Store the suspended plasmid at -20°C. The DNA is stable for at least one year from date of shipping when stored at -20°C.

RefSeq: [NM_001127695.2](#), [NP_001121167.1](#)

RefSeq Size: 2300 bp

RefSeq ORF: 1443 bp

Locus ID: 5476

UniProt ID: [P10619](#)

Cytogenetics: 20q13.12

Protein Families: Druggable Genome, Protease

Protein Pathways: Renin-angiotensin system

Gene Summary: This gene encodes a member of the peptidase S10 family of serine carboxypeptidases. Alternative splicing results in multiple transcript variants, at least one of which encodes a preproprotein that is proteolytically processed to generate two chains that comprise the heterodimeric active enzyme. This enzyme possesses deamidase, esterase and carboxypeptidase activities and acts as a scaffold in the lysosomal multienzyme complex. Mutations in this gene are associated with galactosialidosis. [provided by RefSeq, Nov 2015]