

Product datasheet for **RG225792**

SMAD9 (NM_001127217) Human Tagged ORF Clone

Product data:

Product Type:	Expression Plasmids
Product Name:	SMAD9 (NM_001127217) Human Tagged ORF Clone
Tag:	TurboGFP
Symbol:	SMAD9
Synonyms:	MADH6; MADH9; PPH2; SMAD8; SMAD8/9; SMAD8A; SMAD8B
Mammalian Cell Selection:	Neomycin
Vector:	pCMV6-AC-GFP (PS100010)
E. coli Selection:	Ampicillin (100 ug/mL)



[View online »](#)

ORF Nucleotide Sequence:

>RG225792 representing NM_001127217
 Red=Cloning site Blue=ORF Green=Tags(s)

TTTTGTAATACGACTCACTATAGGGCGGCCGGAATTCGTCGACTGGATCCGGTACCGAGGAGATCTGCC
 GCC**CGCATCGCC**

ATGCACTCCACCACCCCATCAGCTCCCTCTTCTCCTTACCAGCCCGCAGTGAAGAGACTGCTAGGCT
 GGAAGCAAGGAGATGAAGAGGAAAAGTGGGCAGAGAAGGCAGTGGACTCTCTAGTGAAGAAGTTAAAGAA
 GAAGAAGGGAGCCATGGACGAGCTGGAGAGGGCTCTCAGCTGCCCGGGCAGCCAGCAAATGCGTCACG
 ATCCCCGCTCCCTGGACGGGGCTGCAGGTGCCACCAGGGCCTGCCCATGTGATTTACTGTC
 GCGTGTGGCGCTGGCCGATCTGCAGTCCACCACGAGCTGAAGCCGCTGGAGTGTGTGAGTCCATT
 TGGCTCCAAGCAGAAAGAAGTGTGCATTAACCCTTACCACTACCGCCGGTGGAGACTCCAGTACTGCCT
 CCTGTGCTCGTGCAAGACACAGTGAATATAACCCCACTCAGCTCAGCTCCTGGCCAAGTCCGCAGCGCT
 CCCTGCACAGTGAAGCACTCATGCCACACAACGCCACCTATCCTGACTCTTCCAGCAGCTCCGTGCTC
 TGCCTCCCTCCCTCACCAGCCAGCGTCTCCAGTCCCGTGCACGCCAGTACCCTCACTCCCA
 GGAAGTCTTCTGAGCCAGAGATCCCTATCAACTCAGTTGACACACCACCCCTGCCTTATCATGCCA
 CAGAAGCCTCTGAGACCCAGAGTGGCAACCTGTAGATGCCACAGCTGATAGACATGTAGTGTATCGAT
 ACCAAATGGAGACTTTTCGACAGTTTGTACGAGGAGCCCGACTGGTGTGCTCGGTCGCTACTATGAA
 CTGAACAACCGAGTTGGGGAGACATCCAGGCTTCTCCCGAAGTGTGCTCATAGATGGGTTACCGACC
 CTTCAAATAACAGGAACAGATTCTGTCTTGACTTCTTTCTAATGTAAACAGAACTCAACGATAGAAAA
 TACCAGGAGACATATAGGAAAGGTGTGCATTTGACTACGTGGGGGAGAGGTGATGCCGAGTGGCTG
 AGTGACAGCAGCATCTTTGTGCAGAGCCGGAACGCAACTATCAACACGGCTTCCACCCAGCTACCGTCT
 GCAAGATCCCGAGCGGCTGCAGCTCAAGTCTTCAACAACAGCTCTTCGCTCAGCTCCTGGCCAGTC
 AGTTCACCACGGCTTTGAAGTCGTGTATGAAGTACCAAGATGTGACTATCCGGATGAGTTTTGTTAAG
 GGTGGGGTGTGAGTATCATCGCCAGGATGTACCAGCACCCCTGCTGGATTGAGATTCATCTTCATG
 GGCCACTGCAGTGGTGGACAAAGTTCTGACTCAGATGGGCTCTCCACATAACCCCATTTCTCAGTGTC
 T

AG**CGGACCG**ACGCGTACGCGGCCGCTCGAG – GFP Tag – GTTTAA

Protein Sequence:

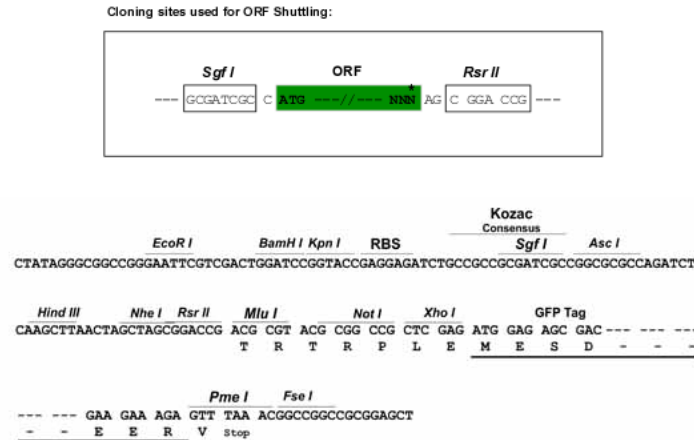
>RG225792 representing NM_001127217
 Red=Cloning site Green=Tags(s)

MHSTTPISSLFSTSPAVKRLLGWKQGDEEEKWAEKAVDSL VKKLKKKKGAMDELERALSCPGQPSKCVT
 IPRSLDGRLQVSHRKLPHVIYCRVWRWPDLSHHEKPLECEFPFGSKQKEVCINPYHYRRVETPVLP
 PVLVPRHSEYNPQLSLLAKFRSASLHSEPLMPHNATYPDSFQPPCSALPPSPSHAFSQSPCTASYPHSP
 GSPSEPESPYQHSVDTPPLPYHATEASETQSGQPVDATADRHVLSIPNGDFRPVCEEPQHWCSVAYYE
 LNNRVGETFQASSRSVLIDGFTDPSNRRNRFCLGLLSNVNRNSTIENTRRHIGKVHLYYVGGEVYAEV
 SDSSIFVQSRNCNYQHGFHPATVCKIPSGCSLKVFNQLFAQLLAQSVHHGFVYVELTKMCTIRMSFVK
 GWGAEYHRQDVTSTPCWIEIHLHGPLQWLDKVLQMGSPHNPISSVS

SGP**TRRRLE** – GFP Tag – V

Restriction Sites:

Sgfl-RsrII

Cloning Scheme:


ACCN: NM_001127217

ORF Size: 1401 bp

OTI Disclaimer: The molecular sequence of this clone aligns with the gene accession number as a point of reference only. However, individual transcript sequences of the same gene can differ through naturally occurring variations (e.g. polymorphisms), each with its own valid existence. This clone is substantially in agreement with the reference, but a complete review of all prevailing variants is recommended prior to use. [More info](#)

OTI Annotation: This clone was engineered to express the complete ORF with an expression tag. Expression varies depending on the nature of the gene.

Components: The ORF clone is ion-exchange column purified and shipped in a 2D barcoded Matrix tube containing 10ug of transfection-ready, dried plasmid DNA (reconstitute with 100 ul of water).

Reconstitution Method:

1. Centrifuge at 5,000xg for 5min.
2. Carefully open the tube and add 100ul of sterile water to dissolve the DNA.
3. Close the tube and incubate for 10 minutes at room temperature.
4. Briefly vortex the tube and then do a quick spin (less than 5000xg) to concentrate the liquid at the bottom.
5. Store the suspended plasmid at -20°C. The DNA is stable for at least one year from date of shipping when stored at -20°C.

RefSeq: [NM_001127217.3](#)

RefSeq Size: 2365 bp

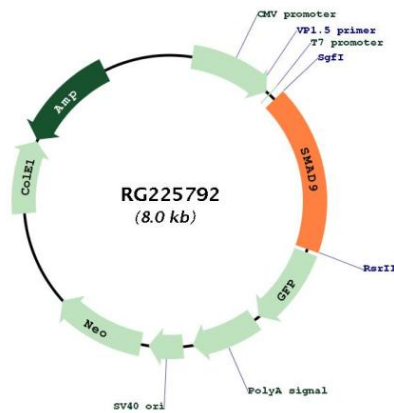
RefSeq ORF: 1404 bp

Locus ID: 4093

UniProt ID: [O15198](#)

Cytogenetics: 13q13.3
Protein Families: ES Cell Differentiation/IPS, Transcription Factors
Protein Pathways: TGF-beta signaling pathway
Gene Summary: The protein encoded by this gene is a member of the SMAD family, which transduces signals from TGF-beta family members. The encoded protein is activated by bone morphogenetic proteins and interacts with SMAD4. Two transcript variants encoding different isoforms have been found for this gene.[provided by RefSeq, Jan 2010]

Product images:



Circular map for RG225792