

Product datasheet for **RG225739**

p73 (TP73) (NM_001126241) Human Tagged ORF Clone

Product data:

Product Type:	Expression Plasmids
Product Name:	p73 (TP73) (NM_001126241) Human Tagged ORF Clone
Tag:	TurboGFP
Symbol:	p73
Synonyms:	P73
Mammalian Cell Selection:	Neomycin
Vector:	pCMV6-AC-GFP (PS100010)
E. coli Selection:	Ampicillin (100 ug/mL)



[View online »](#)

ORF Nucleotide Sequence:

>RG225739 representing NM_001126241
 Red=Cloning site Blue=ORF Green=Tags(s)

TTTTGTAATACGACTCACTATAGGGCGGCCGGGAATTCGTCGACTGGATCCGGTACCGAGGAGATCTGCC
 GCC**GCGATCGCC**

ATGCTGTACGTCGGTGACCCCGCACGGCACCTCGCCACGGCCAGTTCAATCTGCTGAGCAGCACCATGG
 ACCAGATGAGCAGCCGCGCGGCCTCGGCCAGCCCTACACCCAGAGCAGCCGCCAGCGTGCCACCCA
 CTCGCCCTACGCACAACCCAGCTCCACCTTCGACACCATGTCGCCGCGCCTGTCAATCCCTCCAACACC
 GACTACCCCGGACCCACCACCTTTGAGGTCACTTTCCAGCAGTCCAGCACGGCCAAGTCAGCCACCTGGA
 CGTACTCCCCGCTCTTGAAGAACTCTACTGCCAGATCGCAAGACATGCCCCATCCAGATCAAGGTGTC
 CACCCCGCACCCCGAGGACCGCCATCCGGGCCATGCCGTTTACAAGAAAGCGGAGCACGTGACCGAC
 GTCGTGAAACGCTGCCCCAACACGAGCTCGGGAGGGACTTCAACGAAGGACAGTCTGCTCCAGCCAGCC
 ACCTCATCCGCGTGAAGCAATAATCTCTCGCAGTATGTGGATGACCCTGTACCAGGACGAGAGCGT
 CGTGGTGCCCTATGAGCCACCACAGGTGGGGACGGAATTCACCACCATCCTGTACAACCTCATGTGTAAC
 AGCAGCTGTGTAGGGGGCATGAACCGGCCGCCATCCTCATCATCACCTGGAGATGCGGGATGGGC
 AGGTGCTGGGCCCGCGTCTTTGAGGGCCGCATCTGCGCCTGTCTGGCCGCGACCGAAAAGCTGATGA
 GGACCACTACCGGGAGCAGCAGGCCCTGAACGAGAGCTCCGCCAAGAACGGGGCCGCCAGCAAGCGTGCC
 TTCAAGCAGAGCCCCCTGCCGTCGCCGCTTGGTGCCGGTGTGAAGAAGCGGCGGCATGGAGACGAGG
 ACACGTAACCTTCAGGTGCGAGGCGGGGAGAACTTTGAGATCCTGATGAAGCTGAAAGAGAGCCTGGA
 GCTGATGGAGTTGGTGCCGACGCCACTGGTGGACTCCTATCGGCAGCAGCAGCAGCTCCTACAGAGGCCG
 AGTCACCTACAGCCCCGCTCCTACGGCCGGTCTCTCGCCATGAACAAGGTGCACGGGGCATGAACA
 AGCTGCCCTCCGTCAACCAGCTGGTGGGCCAGCCTCCCCCGCAGTTCGGCAGCTACACCAACCTGGG
 GCCCGTGGGCCCGGGATGCTCAACAACCATGGCCACGCAAGTCCAGCCAACGGCGAGATGAGCAGCAGC
 CACAGCGCCAGTCCATGGTCTCGGGTCCCAGTGCCTCCGCCACCCCTACCACGCCGACCCAGCC
 TCGTCAGGACCTGGGGGCC

ACGCGTACGCGGCCGCTCGAG - GFP Tag - GTTTAA

Protein Sequence:

>RG225739 representing NM_001126241
 Red=Cloning site Green=Tags(s)

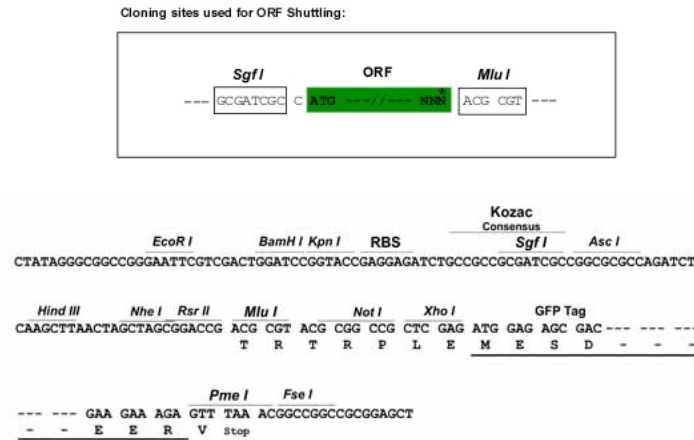
MLYVGDPARHLATAQFNLLSSTMDQMSSRAASAPYTPPEHAASVPTHSPYAQPSSTFDTMSPAPVIPSNT
 DYPGPHFEVTFQSSSTAKSATWTYSPLLKLYCQIAKTCPIQIKVSTPPPPGTAIRAMPVYKKAHVTD
 VVKRCPNHELGRDFNEGQSAPASHLIRVEGNLSQYVDDPVTGRQSVVVPYEPQVGFTEFTTILYNFMCN
 SSCVGGMNRPIILIIITLEMRDQVLRGRSFEGRICACPGDRKKADEHDHYREQQALNESSAKNGAASKRA
 FKQSPPAVPALGAGVKKRRHGDEDTYYLQVRGRENFEILMKLKESELMELVPQPLVDSYRQQQLLQRP
 SHLQPPSYGPVLSPMNKVHGGMNKLPVSNQLVGQPPPHSSAATPNLGPVGPMLNNHGHAVPANGEMSS
 HSAQSMVSGSHCTPPPPYHADPSLVRTWGP

TRTRPLE - GFP Tag - V

Restriction Sites:

SgfI-MluI

Cloning Scheme:



ACCN: NM_001126241

ORF Size: 1350 bp

OTI Disclaimer: The molecular sequence of this clone aligns with the gene accession number as a point of reference only. However, individual transcript sequences of the same gene can differ through naturally occurring variations (e.g. polymorphisms), each with its own valid existence. This clone is substantially in agreement with the reference, but a complete review of all prevailing variants is recommended prior to use. [More info](#)

OTI Annotation: This clone was engineered to express the complete ORF with an expression tag. Expression varies depending on the nature of the gene.

Components: The ORF clone is ion-exchange column purified and shipped in a 2D barcoded Matrix tube containing 10ug of transfection-ready, dried plasmid DNA (reconstitute with 100 ul of water).

Reconstitution Method:

1. Centrifuge at 5,000xg for 5min.
2. Carefully open the tube and add 100ul of sterile water to dissolve the DNA.
3. Close the tube and incubate for 10 minutes at room temperature.
4. Briefly vortex the tube and then do a quick spin (less than 5000xg) to concentrate the liquid at the bottom.
5. Store the suspended plasmid at -20°C. The DNA is stable for at least one year from date of shipping when stored at -20°C.

RefSeq: [NM_001126241.3](#)

RefSeq Size: 2728 bp

RefSeq ORF: 1353 bp

Locus ID: 7161

UniProt ID: [O15350](#)

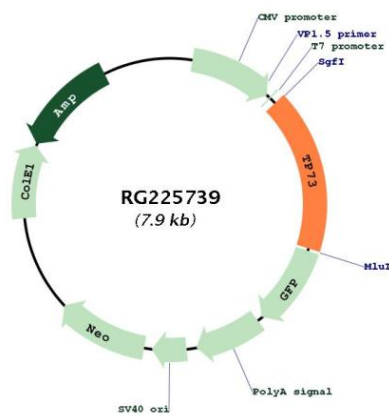
Cytogenetics: 1p36.32

Protein Families: Druggable Genome, Transcription Factors

Protein Pathways: Neurotrophin signaling pathway, p53 signaling pathway

Gene Summary: This gene encodes a member of the p53 family of transcription factors involved in cellular responses to stress and development. It maps to a region on chromosome 1p36 that is frequently deleted in neuroblastoma and other tumors, and thought to contain multiple tumor suppressor genes. The demonstration that this gene is monoallelically expressed (likely from the maternal allele), supports the notion that it is a candidate gene for neuroblastoma. Many transcript variants resulting from alternative splicing and/or use of alternate promoters have been found for this gene, but the biological validity and the full-length nature of some variants have not been determined. [provided by RefSeq, Feb 2011]

Product images:



Circular map for RG225739