

Product datasheet for **RG225738**

CYP24A1 (NM_001128915) Human Tagged ORF Clone

Product data:

Product Type:	Expression Plasmids
Product Name:	CYP24A1 (NM_001128915) Human Tagged ORF Clone
Tag:	TurboGFP
Symbol:	CYP24A1
Synonyms:	CP24; CYP24; HCAI; HCINF1; P450-CC24
Mammalian Cell Selection:	Neomycin
Vector:	pCMV6-AC-GFP (PS100010)
E. coli Selection:	Ampicillin (100 ug/mL)



[View online »](#)

ORF Nucleotide Sequence:

>RG225738 representing NM_001128915
 Red=Cloning site Blue=ORF Green=Tags(s)

TTTTGTAATACGACTCACTATAGGGCGGCCGGGAATTCGTCGACTGGATCCGGTACCGAGGAGATCTGCC
 GCC**GCGATCGCC**

ATGAGCTCCCCATCAGCAAGAGCCGCTCGCTTCCGCCTTCCTGCAGCAGCTGCGCAGTCCGAGGCAGC
 CCCGAGACTGGTGACATCTACGGCGTACACGTCCCCTCAGCCGCGAGAGGTGCCAGTCTGCCCGCTGAC
 AGCTGGTGGCGAGACTCAGAACGCGGCCGCCCTGCCGGGCCCCACCAGCTGGCCACTGCTGGGCAGCCTG
 CTGCAGATTCTCTGAAAAGGGGTCTCAAGAAACAGCACGACACCCTGGTGGAGTACCACAAGAAGTATG
 GCAAGATTTCCGCATGAAGTTGGGTCTCTTGGTGGTGCACCTGGGCTCGCCATGCCTGCTGGAAGC
 GCTGTACCGCACCAGAGCGCGTACCCGACGGCTGGAGATCAAACCGTGAAGGCCTATCGCGACTAC
 CGCAAAGAAGGCTACGGGCTGCTGATCCTGGAAGGGAAGACTGGCAGCGGGTCCGGAGTGCCTTTCAA
 AAAAACTAATGAAACCAGGGGAAGTATGAAGCTGGACAACAAAATCAATGAGGTCTTGCCGATTTTAT
 GGGCAGAAATAGTAGCTCTGTGATGAAAGAGGCCACGTTGAAGACTTGTACAGCGAACTGAACAAATGG
 TCGTTTAAAAGTATCTGCCTCGTGTGATGAGAAGAGATTTGGGCTTCTCCAGAAGAATGCAGGGGATG
 AAGCTGTGAACCTCATCATGGCCATCAAAAATGATGAGCACGTTTGGGAGGATGATGGTCACTCCAGT
 CGAGCTGCACAAGAGCCTCAACACCAAGGTCTGGCAGGACCACACTCTGGCCTGGGACACCATTTTCAA
 TCAGTCAAAGCTGTATCGACAACCGGTTAGAGAAGTATTCTCAGCAGCCTAGTGCAGATTTCTTTGTG
 ACATTTATCACCAGAATCGGCTTTCAAAGAAAGAAATTGTATGCTGCTGTACAGAGCTCCAGCTGGCTGC
 GGTGGAACGACAGCAACAGTCTAATGTGGATTCTCTACAATTTATCCCGTAATCCCAAGTGAACAA
 AAGCTTCTTAAGGAAATCAAGTGTATTACCTGAGAATCAGGTGCCACGGCAGAAGATTTGAGGAATA
 TGCCGATTTAAAAGCCTGTCTGAAAGAATCTATGAGGCTTACGCCGAGTGTACCATTTACAACCTGGAC
 TCTTGACAAGGCAACAGTCTGGGTGAATATGCTTTACCCAAAGGAATTGTCCGCAAAATACGACATCCAG
 GCCACAGACAATGAGCCTGTTGAGATGCTACACTCAGGCACCCTGGTGCCAGCCGGGAACCTCCCATCG
 CGTTTTGCCAGCGA

ACGCGTACGCGGCCGCTCGAG – GFP Tag – GTTTAA

Protein Sequence:

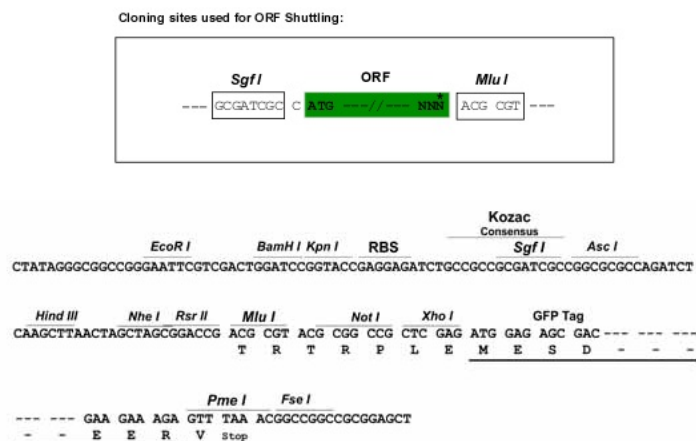
>RG225738 representing NM_001128915
 Red=Cloning site Green=Tags(s)

MSSPISKSRSLAAFLQQLRSPRQPPRLVTSTAYTSPQPREVPVCPLTAGGETQNAALPGPTSWPLLGSL
 LQILWKGLKKQHDTLVEYHKYKIFRMKLGSESVHLGSPCLLEALYRTE SAYPQRLEIKPWKAYRDY
 RKEGYGLLILEGEDWQRVRSFAFQKLMKPGVMKLDNKINEVLADFMGRIDELCDEGRHVEDLYSELNWK
 SFESICLVLYEKRFGLLQKNAGDEAVNF IMAIKTMMSTFGRMMVTPVELHKS LNTKVVQDHTLAWDTIFK
 SVKACIDNRLEKYSQQPSADFLCDIYHQNRLSKKEL YAAVTEQLAAVETTANSLMWILYNLSRNPQVQQ
 KLLKEIQSVLPENQVPRAEDLRNMPYLKACLKESMRLTPSPVFTTRTLDKATVLGEYALPKGIVRKYDIQ
 ATDNEPVEMLSHTLVPSRELP IAF CQR

TRTRPLE – GFP Tag – V

Restriction Sites:

SgfI-MluI

Cloning Scheme:


ACCN: NM_001128915

ORF Size: 1344 bp

OTI Disclaimer: The molecular sequence of this clone aligns with the gene accession number as a point of reference only. However, individual transcript sequences of the same gene can differ through naturally occurring variations (e.g. polymorphisms), each with its own valid existence. This clone is substantially in agreement with the reference, but a complete review of all prevailing variants is recommended prior to use. [More info](#)

OTI Annotation: This clone was engineered to express the complete ORF with an expression tag. Expression varies depending on the nature of the gene.

Components: The ORF clone is ion-exchange column purified and shipped in a 2D barcoded Matrix tube containing 10ug of transfection-ready, dried plasmid DNA (reconstitute with 100 ul of water).

Reconstitution Method:

1. Centrifuge at 5,000xg for 5min.
2. Carefully open the tube and add 100ul of sterile water to dissolve the DNA.
3. Close the tube and incubate for 10 minutes at room temperature.
4. Briefly vortex the tube and then do a quick spin (less than 5000xg) to concentrate the liquid at the bottom.
5. Store the suspended plasmid at -20°C. The DNA is stable for at least one year from date of shipping when stored at -20°C.

RefSeq: [NM_001128915.2](#)

RefSeq Size: 3089 bp

RefSeq ORF: 1347 bp

Locus ID: 1591

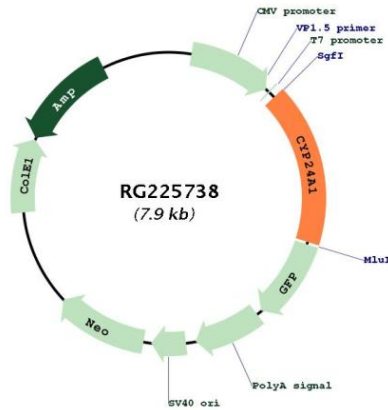
UniProt ID: [Q07973](#)

Cytogenetics: 20q13.2

Protein Families: Druggable Genome

Gene Summary: This gene encodes a member of the cytochrome P450 superfamily of enzymes. The cytochrome P450 proteins are monooxygenases which catalyze many reactions involved in drug metabolism and synthesis of cholesterol, steroids and other lipids. This mitochondrial protein initiates the degradation of 1,25-dihydroxyvitamin D3, the physiologically active form of vitamin D3, by hydroxylation of the side chain. In regulating the level of vitamin D3, this enzyme plays a role in calcium homeostasis and the vitamin D endocrine system. Alternatively spliced transcript variants encoding different isoforms have been found for this gene. [provided by RefSeq, Jul 2008]

Product images:



Circular map for RG225738