

## Product datasheet for **RG225705**

### **C13orf31 (LACC1) (NM\_001128303) Human Tagged ORF Clone**

#### Product data:

Product Type:	Expression Plasmids
Product Name:	C13orf31 (LACC1) (NM_001128303) Human Tagged ORF Clone
Tag:	TurboGFP
Symbol:	C13orf31
Synonyms:	C13orf31; FAMIN; JUVAR
Mammalian Cell Selection:	Neomycin
Vector:	pCMV6-AC-GFP (PS100010)
E. coli Selection:	Ampicillin (100 ug/mL)
ORF Nucleotide Sequence:	>RG225705 representing NM_001128303 Red=Cloning site Blue=ORF Green=Tags(s)

TTTTGTAATACGACTCACTATAGGGCGGCCGGAATTCGTCGACTGGATCCGGTACCGAGGAGATCTGCC  
GCC**CGATCGC**

ATGGCAGAAGCTGTTTTGATTGATCTTTTTGGTTTGAAATTGAACTCTCAAAAACTGCCATCAGACAT  
TACTGAAGACTTTGAATGCTGTCCAATACCACCATGCTGCCAAGGCCAAGTTTCTCTGTATAATGTGTTG  
CAGTAACATCAGCTATGAAAGGGATGGAGAACAAGATAATTGTGAAATAGAAACAAGCAATGGATTATCA  
GCTCTCTTGAAGAATTTGAGATTGTTAGCTGTCCAGCATGGCTGCCACTTTGTATACCATTAAACAGA  
AAATTGATGAAAAAATCTGAGCAGCATTAAAGGTAATTGTACCCAGGCACAGGAAGACATTAATGAAAGC  
TTTTATTGATCAACTCTTCACTGATGTTTACAATTTTGAATTTGAAGATTGCAAGTGACTTTTAGGGGA  
GGGCTTTTTAAACAGTCCATTGAAATAAACGTAATCACAGCTCAAGAACTAAGAGGAATTCAGAATGAAA  
TAGAAACATTTTTGAGAAGTCTGCCAGCACTGAGAGGAAAATTAATATTATCACTTCTTCTTTGATCCC  
AGATATTTTCATACATGGATTTACTACAAGAACAGGTGGGATATCTTATATACCAACTCTTAGCTCATTC  
AATCTCTTCAGTAGTTCCAAACGGAGAGATCCCAAGGTAGTGGTTCAAGAAAATCTGCGTAGGTTGGCGA  
ATGCTGCAGGATTTAATGTGGAGAAATTTACCGAATAAAGACTCATTCATTCATGACATCTGGATTAT  
GGGAAGAAAGGAGCCTGACTCTTATGATGGAATAACCACAATCAGAGAGGAGTCACAATAGCAGCTCTT  
GGTGCAGACTGTATACCGATAGTTTTTGCAGATCCAGTCAAAAAAGCATGTGGGTTGCTCAGCTGGTT  
GGAAAGGTACTTTGTTGGGTGTTGCTATGGCTACAGTGAATGCTATGATAGCAGAATATGGCTGCAGTTT  
GGAAGACATTGTTGTTGACTTGACCTTCAGTAGGACCTTGCTGTTTTACTCTTCCAAGGGAATCAGCA  
GAGGCATTTTCATAATCTTCATCTGCATGTGTACAATTTTGATTACCAAAATCCCTGTATCGACATCC  
GTAAAGCCACAAGGATTCTTCTAGAACAGGGAGGAATTTCCACAGAATATTCAGGACCAGAACCAAGA  
TCTCAACCTCTGTACATCTTGCCATCCTGACAAGTTTTTCTCCCATGTCCGAGATGGCCTTAATTTTGGT  
ACACAGATTGGCTTCATATCAATTAAAGAA

**ACGCGT**ACGCGGCCGCTCGAG - GFP Tag - GTTTAA



[View online »](#)

**Protein Sequence:** >RG225705 representing NM\_001128303  
 Red=Cloning site Green=Tags(s)

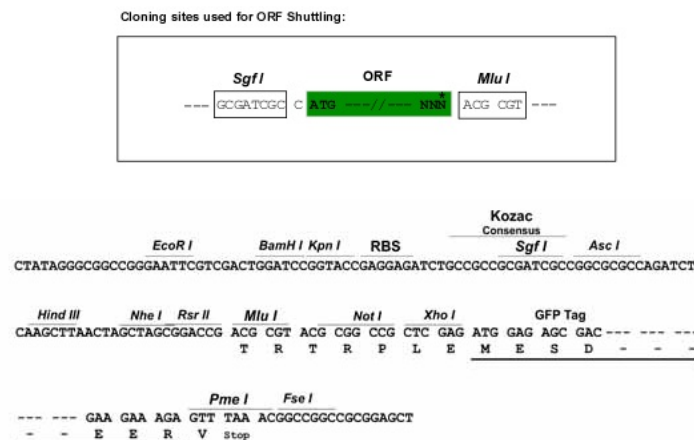
MAEAVLIDLFGLKLNQKNCHQTLLKTLNAVQYHHAAKAKFLCIMCCSNISYERDGEQDNCEIETSNGLS  
 ALLEEFIEIVSCPSMAATLYTIKQKIDEKNLSSIKVIVPRHRKTLMKAFIDQLFTDVYNFEFEDLQVTFRG  
 GLFKQSIENIVITAQELRGIQNEIETFLRSLPALRGKLTITSSLIPDIFIHGFTTRTGGISYIPTLSSF  
 NLFSSSKRRDPKVVVQENLRRLANAAGFNVEKFYRIKTHHSNDIWMGRKEPDSYDGITTNQRGVTIAAL  
 GADCIPIVFADPVKKACGVAHAGWKGTLLGVAMATVNAMIAEYGCSELDIVVVLGPSVGPCCFTLPRESA  
 EAFHNLHPACVQLFDSNPCIDIRKATRILLEQGGILPQNIQDQNDLNLCTSCHPDKFFSHVRDGLNFG  
 TQIGFISIKE

TRTRPLE – GFP Tag – V

**Restriction Sites:**

SgfI-MluI

**Cloning Scheme:**



**ACCN:** NM\_001128303

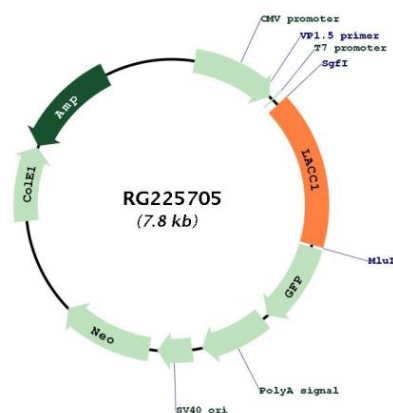
**ORF Size:** 1290 bp

**OTI Disclaimer:** Due to the inherent nature of this plasmid, standard methods to replicate additional amounts of DNA in E. coli are highly likely to result in mutations and/or rearrangements. Therefore, OriGene does not guarantee the capability to replicate this plasmid DNA. Additional amounts of DNA can be purchased from OriGene with batch-specific, full-sequence verification at a reduced cost. Please contact our customer care team at [custsupport@origene.com](mailto:custsupport@origene.com) or by calling 301.340.3188 option 3 for pricing and delivery.

The molecular sequence of this clone aligns with the gene accession number as a point of reference only. However, individual transcript sequences of the same gene can differ through naturally occurring variations (e.g. polymorphisms), each with its own valid existence. This clone is substantially in agreement with the reference, but a complete review of all prevailing variants is recommended prior to use. [More info](#)

<b>OTI Annotation:</b>	This clone was engineered to express the complete ORF with an expression tag. Expression varies depending on the nature of the gene.
<b>Components:</b>	The ORF clone is ion-exchange column purified and shipped in a 2D barcoded Matrix tube containing 10ug of transfection-ready, dried plasmid DNA (reconstitute with 100 ul of water).
<b>Reconstitution Method:</b>	<ol style="list-style-type: none"> <li>1. Centrifuge at 5,000xg for 5min.</li> <li>2. Carefully open the tube and add 100ul of sterile water to dissolve the DNA.</li> <li>3. Close the tube and incubate for 10 minutes at room temperature.</li> <li>4. Briefly vortex the tube and then do a quick spin (less than 5000xg) to concentrate the liquid at the bottom.</li> <li>5. Store the suspended plasmid at -20°C. The DNA is stable for at least one year from date of shipping when stored at -20°C.</li> </ol>
<b>RefSeq:</b>	<u>NM_001128303.2</u>
<b>RefSeq Size:</b>	4288 bp
<b>RefSeq ORF:</b>	1293 bp
<b>Locus ID:</b>	144811
<b>UniProt ID:</b>	<u>Q8IV20</u>
<b>Cytogenetics:</b>	13q14.11
<b>Gene Summary:</b>	<p>This gene encodes an oxidoreductase that promotes fatty-acid oxidation, with concomitant inflammasome activation, mitochondrial and NADPH-oxidase-dependent reactive oxygen species production, and bactericidal activity of macrophages. The encoded protein forms a complex with fatty acid synthase on peroxisomes and is thought to be modulated by peroxisome proliferator-activated receptor signaling events. Naturally occurring mutations in this gene are associated with inflammatory bowel disease, Behcet's disease, leprosy, ulcerative colitis, early-onset Crohn's disease, and systemic juvenile idiopathic arthritis. [provided by RefSeq, Apr 2017]</p>

## Product images:



Circular map for RG225705

