

## Product datasheet for **RG225645**

### DPEP1 (NM\_001128141) Human Tagged ORF Clone

#### Product data:

**Product Type:** Expression Plasmids  
**Product Name:** DPEP1 (NM\_001128141) Human Tagged ORF Clone  
**Tag:** TurboGFP  
**Symbol:** DPEP1  
**Synonyms:** MBD1; MDP; RDP  
**Mammalian Cell Selection:** Neomycin  
**Vector:** pCMV6-AC-GFP (PS100010)  
**E. coli Selection:** Ampicillin (100 ug/mL)  
**ORF Nucleotide Sequence:** >RG225645 representing NM\_001128141  
 Red=Cloning site Blue=ORF Green=Tags(s)

TTTTGTAATACGACTCACTATAGGGCGGCCGGAATTCGTCGACTGGATCCGGTACCGAGGAGATCTGCC  
 GCC**CGATCGCC**

ATGTGGAGCGGATGGTGGCTGTGGCCCTTGTGGCCGTCTGCACTGCAGACTTCTTTGGGACGAGGCAG  
 AGAGGATCATGAGGGACTCCCCTGTCATTGATGGGCACAATGACCTCCCCTGGCAGCTGCTGGATATGTT  
 CAACAACCGGCTGCAGGACGAGAGGGCCAACCTGACCACCTTGGCCGGCACACACCAACATCCCCAAG  
 CTGAGGGCCGGCTTTGTGGGAGGCCAGTCTGGTCCGTGTACACGCCCTGCGACACCCAGAACAAGACG  
 CCGTGCAGGAGGAGCTGGAGCAGATGGACGTGGTCCACCGCATGTCCGGATGTACCCGGAGACCTCCT  
 GTATGTACCAGCAGTGCAGGCATTTCGGCAGGCCCTCCGGGAAGGGAAGGTGGCCAGCCTGATCGGCGTG  
 GAGGGCGGCCACTCCATTGACAGCAGTTTGGGCGTCTGCGGGCACTCTATCAGCTGGGCATGCGGTACC  
 TGACCCTACCCACAGCTGCAACACGCCCTGGGCTGACAAGTGGTGGTGGACACGGGAGACAGCGAGCC  
 CCAGAGCCAAGGCTTGTACCCTTTGGGCGAGCTGTGGTGAAGGAGCTGAACCGTCTGGGGTCTCATC  
 GACTTGGCTCACGTGTCTGTGGCCACATGAAGGCCACCTGCAGCTGTCCAGAGCCCGGTATCTTCA  
 GCCACTCCTCGGCTACAGCGTGTGCGCAAGCCGGCGAACGTGCCTGACGACGTCTGAGGCTGGTGAA  
 ACAGACAGACAGCCTGGTGTGTTGAACCTTCTACAACAATTACATTTCTGCACCAACAAGGCCAACCTG  
 TCCCAAGTGGCCGACCATCTGGATCACATCAAGGAGGTGGCAGGAGCCAGAGCCGTGGTGGTGGGG  
 ACTTTGATGGTGTCCAAAGGTCCTGAGGGGCTGGAGGACGTCTCCAAGTATCCAGACCTGATCGCTGA  
 GCTGCTCAGGAGAACTGGACGGAGGCGGAGGTCAAGGGCGCACTGGCTGACAACCTGCTGAGGGTCTTC  
 GAGGCTGTGGAACAGGCCAGCAACCTCACACAGGCTCCCGAGGAGGAGCCATCCCGCTGGACAGCTGG  
 GTGGCTCTGCAGGACCCATTACGGTACTCCTCTGGGGCTTCCAGCCTCCATCGCCACTGGGGCTCCT  
 GCTGGCTCCCTCGTCCCCTGGTCTCTGTCTCTCTCTCTG

ACGCGTACGCGGCCGCTCGAG - GFP Tag - GTTTAA



[View online >](#)

**Protein Sequence:** >RG225645 representing NM\_001128141  
Red=Cloning site Green=Tags(s)

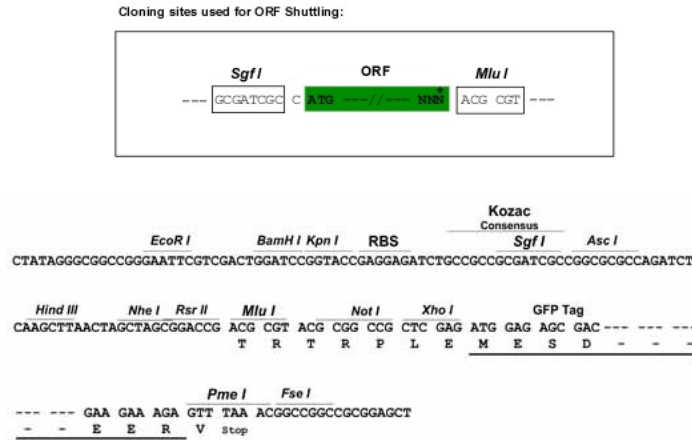
MWSGWLWPLVAVCTADFFRDEAERIMRDSVIDGHNDLPWQLLDMFNNRLQDERANLTTLAGTHTNIPK  
 LRAFGVGGQFWSVYTPCDTQNKDAVRRITLEQMDVVHRMCRMPETFLYVTSAGIRQAFREGKVASLIGV  
 EGGHSIDSSLGVLRALYQLGMRYLTLTHSCNTPWADNWLVDGDEPQSQGLSPFGQRVVKELNRLGVL I  
 DLAHVSVATMKATLQLSRAPVIFSHSSAYSVCASRRNVPDDVLRVVKQTDLSVMVNFYNNYISCTNKANL  
 SQVADHLDHIKEVAGARAVGFGDFDGVPRVPEGLEDVSKYPDLIAELLRRNWTEAEVKGALADNLLRVF  
 EAVEQASNLTAPEEEPIPLDQLGGSCRTHYGYSSGASSLHRHWGLLLASLAPLVLCLSLL

TRTRPLE - GFP Tag - V

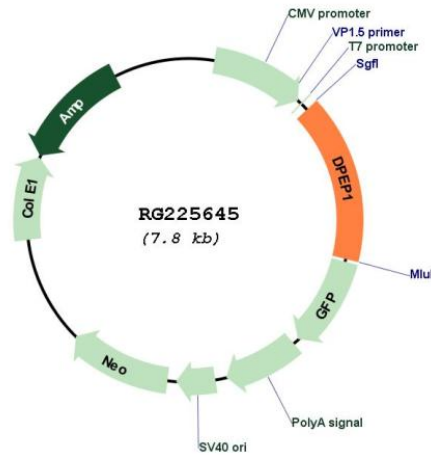
**Restriction Sites:**

SgfI-MluI

**Cloning Scheme:**



**Plasmid Map:**



**ACCN:**

NM\_001128141

<b>ORF Size:</b>	1233 bp
<b>OTI Disclaimer:</b>	The molecular sequence of this clone aligns with the gene accession number as a point of reference only. However, individual transcript sequences of the same gene can differ through naturally occurring variations (e.g. polymorphisms), each with its own valid existence. This clone is substantially in agreement with the reference, but a complete review of all prevailing variants is recommended prior to use. <a href="#">More info</a>
<b>OTI Annotation:</b>	This clone was engineered to express the complete ORF with an expression tag. Expression varies depending on the nature of the gene.
<b>Components:</b>	The ORF clone is ion-exchange column purified and shipped in a 2D barcoded Matrix tube containing 10ug of transfection-ready, dried plasmid DNA (reconstitute with 100 ul of water).
<b>Reconstitution Method:</b>	<ol style="list-style-type: none"><li>1. Centrifuge at 5,000xg for 5min.</li><li>2. Carefully open the tube and add 100ul of sterile water to dissolve the DNA.</li><li>3. Close the tube and incubate for 10 minutes at room temperature.</li><li>4. Briefly vortex the tube and then do a quick spin (less than 5000xg) to concentrate the liquid at the bottom.</li><li>5. Store the suspended plasmid at -20°C. The DNA is stable for at least one year from date of shipping when stored at -20°C.</li></ol>
<b>RefSeq:</b>	<a href="#">NM_001128141.2</a> , <a href="#">NP_001121613.1</a>
<b>RefSeq Size:</b>	1664 bp
<b>RefSeq ORF:</b>	1236 bp
<b>Locus ID:</b>	1800
<b>UniProt ID:</b>	<a href="#">P16444</a>
<b>Cytogenetics:</b>	16q24.3
<b>Protein Families:</b>	Protease
<b>Gene Summary:</b>	The protein encoded by this gene is a kidney membrane enzyme involved in the metabolism of glutathione and other similar proteins by dipeptide hydrolysis. The encoded protein is known to regulate leukotriene activity by catalyzing the conversion of leukotriene D4 to leukotriene E4. This protein uses zinc as a cofactor and acts as a disulfide-linked homodimer. [provided by RefSeq, Dec 2020]