

## Product datasheet for **RG225528**

### CCRL2 (NM\_001130910) Human Tagged ORF Clone

#### Product data:

Product Type:	Expression Plasmids
Product Name:	CCRL2 (NM_001130910) Human Tagged ORF Clone
Tag:	TurboGFP
Symbol:	CCRL2
Synonyms:	ACKR5; CKRX; CRAM; CRAM-A; CRAM-B; HCR
Mammalian Cell Selection:	Neomycin
Vector:	pCMV6-AC-GFP (PS100010)
E. coli Selection:	Ampicillin (100 ug/mL)
ORF Nucleotide Sequence:	>RG225528 representing NM_001130910 Red=Cloning site Blue=ORF Green=Tags(s)

TTTTGTAATACGACTCACTATAGGGCGCCGGGAATTCGTCGACTGGATCCGGTACCGAGGAGATCTGCC  
GCC**CGATCGCC**

ATGATCTACACCCGTTTCTTAAAAGGCAGTCTGAAGATGGCCAATTACACGCTGGCACCAGAGGATGAAT  
ATGATGTCCTCATAGAAGGTGAAGTGGAGAGCGATGAGGCAGAGCAATGTGACAAGTATGACGCCAGGC  
ACTCTCAGCCCAGCTGGTGCCATCACTCTGCTGTGTTTGTGATCGGTGCCTGGACAATCTCCTG  
GTTGTGCTTATCCTGGTAAAATATAAAGGACTCAAACGCGTGGAAAATATCTATCTTCTAAACTTGGCAG  
TTTCTAACTTGTGTTTCTTGCTTACCCTGCCCTTCTGGGCTCATGCTGGGGCGATCCCATGTGTA  
TCTCATTGGACTGTACTTCGTGGCCTGTACAGTGAGACATTTTTCAATTGCCTTCTGACTGTGCAAAGG  
TACCTAGTGTTTTGACAAGGGAACTTTTTCTCAGCCAGGAGGAGGGTGCCTGTGGCATCATTACAA  
GTGTCCTGGCATGGGTAACAGCCATTCTGGCCACTTTGCCTGAATTCGTGGTTTATAAACCTCAGATGGA  
AGACCAGAAATACAAGTGTGATTTAGCAGAACTCCCTCCTGCCAGCTGATGAGACATTCTGGAAGCAT  
TTTCTGACTTTAAAAATGAACATTTTCGTTCTTGTCTCCCTATTTATTTTTACATTTCTCTATGTGC  
AAATGAGAAAAACACTAAGGTTTCAGGGAGCAGAGGTATAGCCTTTTCAAGCTTGTGTTTGGCATAATGGT  
AGTCTTCTTCTGATGTGGGCGCCCTACAATATGCATTTTTCTGTCCACTTTCAAAGAACACTTCTCC  
CTGAGTGACTGCAAGAGCAGCTACAATCTGGACAAAAGTGTTCACATCACTAAACTCATCGCCACCACC  
ACTGTGCATCAACCCTCCTGTATGCGTTTCTTGATGGGACATTTAGCAAATACCTCTGCCGCTGTTT  
CCATCTGCGTAGTAACACCCCACTTCAACCCAGGGGCGAGTCTGCACAAGGCACATCGAGGGAAGAACCT  
GACCATTCCACCGAAGTG

AG**CGGACCG**ACGCGTACGCGGCCGCTCGAG - GFP Tag - GTTTAA



[View online »](#)

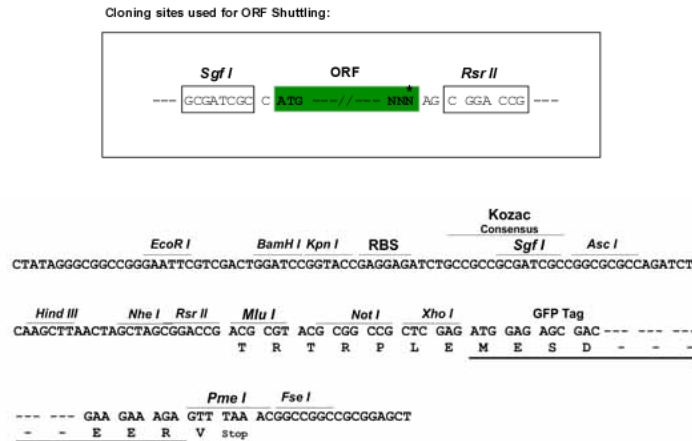
**Protein Sequence:** >RG225528 representing NM\_001130910  
 Red=Cloning site Green=Tags(s)

MIYTRFLKGSCLKMANYTLAPEDEYDVLIEGELESDEAEQCDKYDAQALSAQLVPSLCSAVFVIGVLDNLL  
 VVLILVKYKGLKRVENIYLLNLAVSNLCFLLTLPFWAHAGDPMCKILIGLYFVGLYSETFFNCLLTVQR  
 YLVFLHKGNFFSARRRVPCGIIITSVLAWVTAILATLPEFVVYKQMEDQKYKCAF SRT PFLPADETFWKH  
 FLTLKMNISVLVPLFIFTFLYVQMRKTLRFREQRYSLFKLVFAIMVVFLLMWAPYNI AFFLSTFKEHFS  
 L S D C K S S Y N L D K S V H I T K L I A T T H C C I N P L L Y A F L D G T F S K Y L C R C F H L R S N T P L Q P R G Q S A Q G T S R E E P  
 D H S T E V

SGP TRRRLE - GFP Tag - V

**Restriction Sites:** SgfI-RsrII

**Cloning Scheme:**



**ACCN:** NM\_001130910

**ORF Size:** 1068 bp

**OTI Disclaimer:** The molecular sequence of this clone aligns with the gene accession number as a point of reference only. However, individual transcript sequences of the same gene can differ through naturally occurring variations (e.g. polymorphisms), each with its own valid existence. This clone is substantially in agreement with the reference, but a complete review of all prevailing variants is recommended prior to use. [More info](#)

**OTI Annotation:** This clone was engineered to express the complete ORF with an expression tag. Expression varies depending on the nature of the gene.

**Components:** The ORF clone is ion-exchange column purified and shipped in a 2D barcoded Matrix tube containing 10ug of transfection-ready, dried plasmid DNA (reconstitute with 100 ul of water).

**Reconstitution Method:**

1. Centrifuge at 5,000xg for 5min.
2. Carefully open the tube and add 100ul of sterile water to dissolve the DNA.
3. Close the tube and incubate for 10 minutes at room temperature.
4. Briefly vortex the tube and then do a quick spin (less than 5000xg) to concentrate the liquid at the bottom.
5. Store the suspended plasmid at -20°C. The DNA is stable for at least one year from date of shipping when stored at -20°C.

**RefSeq:** [NM\\_001130910.2](#)

**RefSeq Size:** 1612 bp

**RefSeq ORF:** 1071 bp

**Locus ID:** 9034

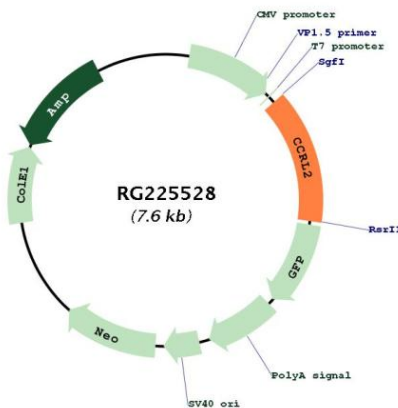
**UniProt ID:** [O00421](#)

**Cytogenetics:** 3p21.31

**Protein Families:** Druggable Genome, GPCR, Transmembrane

**Gene Summary:** This gene encodes a chemokine receptor like protein, which is predicted to be a seven transmembrane protein and most closely related to CCR1. Chemokines and their receptors mediated signal transduction are critical for the recruitment of effector immune cells to the site of inflammation. This gene is expressed at high levels in primary neutrophils and primary monocytes, and is further upregulated on neutrophil activation and during monocyte to macrophage differentiation. The function of this gene is unknown. This gene is mapped to the region where the chemokine receptor gene cluster is located. [provided by RefSeq, Jul 2008]

### Product images:



Circular map for RG225528