

Product datasheet for **RG225482**

SPON2 (NM_001128325) Human Tagged ORF Clone

Product data:

Product Type:	Expression Plasmids
Product Name:	SPON2 (NM_001128325) Human Tagged ORF Clone
Tag:	TurboGFP
Symbol:	SPON2
Synonyms:	DIL-1; DIL1; M-SPONDIN; MINDIN
Mammalian Cell Selection:	Neomycin
Vector:	pCMV6-AC-GFP (PS100010)
E. coli Selection:	Ampicillin (100 ug/mL)
ORF Nucleotide Sequence:	>RG225482 representing NM_001128325 Red=Cloning site Blue=ORF Green=Tags(s)

TTTTGTAATACGACTCACTATAGGGCGGCCGGAATTCGTCGACTGGATCCGGTACCGAGGAGATCTGCC
GCC**CGATCGCC**

ATGGAAAACCCAGCCCGCCGCCCTGGGCAAGGCCCTCTGCGCTCTCTCTGGCCACTCTCGGCG
CCGCCGGCCAGCCTCTTGGGGGAGAGTCCATCTGTTCCGCCAGAGCCCGCCAAATACAGCATCACCTT
CACGGCAAGTGGAGCCAGACGGCCTTCCCAAGCAGTACCCCTGTTCCGCCCCCTGCGCAGTGGTCT
TCGCTGCTGGGGCCGCGCATAGCTCCGACTACAGCATGTGGAGGAAGAACCAGTACGTAGTAACGGG
TGCAGACTTTGCGGAGCGGGGAGGCCCTGGGCGCTGATGAAGGAGATCGAGGCGCGGGGAGGCGCT
GCAGAGCGTGCACGCGGTGTTTTGCGCGCCCGCGTCCCAAGCGCACCGGGCAGACGTGCGCGGAGCTG
GAGGTGCAGCGCAGGCACTCGCTGGTCTCGTTTGTGGTGCATCGTGCCAGCCCCGACTGGTTCGTGG
GCGTGGACAGCCTGGACCTGTGCGACGGGGACCGTTGGCGGGAACAGGCGGCGCTGGACCTGTACCCCTA
CGACGCCGGGACGGACAGCGGCTTACCTTCTCTCCCCAACTTCGCCACCATCCCGCAGGACACGGTG
ACCGAGATAACGTCTCTCTCCAGCCACCGGCCAACTCTTCTACTACCGCGGCTGAAGGCCCTGC
CTCCATCGCCAGGGTGACACTGGTGGGCTGCGACAGAGCCCCAGGGCCTTCATCCCTCCCGCCCCAGT
CCTGCCAGCAGGACAATGAGATTGTAGACAGCGCCTCAGTTCAGAAACGCCGCTGGACTGCGAGGTC
TCCCTGTGGTCTCTGGGACTGTGCGGAGGCCACTGTGGGAGGCTCGGGACCAAGAGCAGGACTCGT
ACGTCCGGGTCCAGCCCGCAACACGGGAGCCCTGCCCGAGCTCGAAGAAGAGGCTGAGTGCGTCCC
TGATAACTGCGTC

ACGCGTACGCGGCCGCTCGAG - GFP Tag - GTTTAA



[View online »](#)

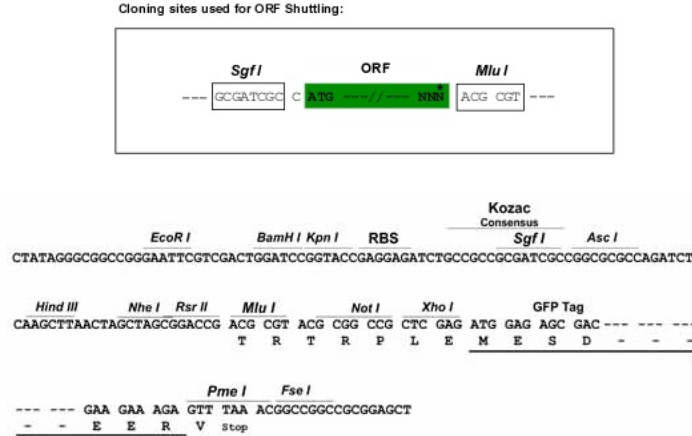
Protein Sequence: >RG225482 representing NM_001128325
 Red=Cloning site Green=Tags(s)

MENPSPAALGKALCALLLATLGAAGQPLGGESIC SARAPAKYSITFTGKWSQTAFPKQYPLFRPPAQWS
 SLLGAAHSSDYSMWRKNQYVSNGLRDF AERGEAWLMKEIEAAGEALQSVHAVFSAPAVPSGTGQTS AEL
 EVQRRHSLVSVFVVRIVSPDWFVGVDSL DLCDGDRWREQAALDL YPYDAGTDSGFTFSSPNFATIPQDTV
 TEITSSSPSHPANFSFYPR LKALPPIARVTLVRLRQSPRAFIPPAPVLP SRDNEIVDSASVPETPLDCEV
 SLWSSWGLCGGHCGRLGTKSRTRYVRVQPANNGSPCELEEEAECVPDNCV

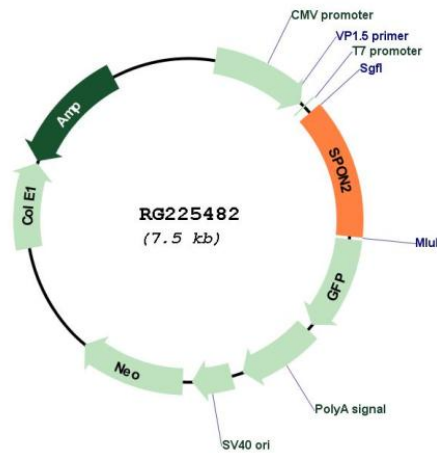
TRTRPLE - GFP Tag - V

Restriction Sites: SgfI-MluI

Cloning Scheme:



Plasmid Map:



ACCN: NM_001128325

ORF Size: 993 bp

OTI Disclaimer:	The molecular sequence of this clone aligns with the gene accession number as a point of reference only. However, individual transcript sequences of the same gene can differ through naturally occurring variations (e.g. polymorphisms), each with its own valid existence. This clone is substantially in agreement with the reference, but a complete review of all prevailing variants is recommended prior to use. More info
OTI Annotation:	This clone was engineered to express the complete ORF with an expression tag. Expression varies depending on the nature of the gene.
Components:	The ORF clone is ion-exchange column purified and shipped in a 2D barcoded Matrix tube containing 10ug of transfection-ready, dried plasmid DNA (reconstitute with 100 ul of water).
Reconstitution Method:	<ol style="list-style-type: none">1. Centrifuge at 5,000xg for 5min.2. Carefully open the tube and add 100ul of sterile water to dissolve the DNA.3. Close the tube and incubate for 10 minutes at room temperature.4. Briefly vortex the tube and then do a quick spin (less than 5000xg) to concentrate the liquid at the bottom.5. Store the suspended plasmid at -20°C. The DNA is stable for at least one year from date of shipping when stored at -20°C.
RefSeq:	NM_001128325.2 , NP_001121797.1
RefSeq Size:	1825 bp
RefSeq ORF:	996 bp
Locus ID:	10417
UniProt ID:	Q9BUD6
Cytogenetics:	4p16.3
Protein Families:	Secreted Protein
Gene Summary:	Cell adhesion protein that promotes adhesion and outgrowth of hippocampal embryonic neurons. Binds directly to bacteria and their components and functions as an opsonin for macrophage phagocytosis of bacteria. Essential in the initiation of the innate immune response and represents a unique pattern-recognition molecule in the ECM for microbial pathogens (By similarity). Binds bacterial lipopolysaccharide (LPS).[UniProtKB/Swiss-Prot Function]