

## Product datasheet for **RG225450**

### JMJD7 (NM\_001114632) Human Tagged ORF Clone

#### Product data:

Product Type:	Expression Plasmids
Product Name:	JMJD7 (NM_001114632) Human Tagged ORF Clone
Tag:	TurboGFP
Symbol:	JMJD7
Mammalian Cell Selection:	Neomycin
Vector:	pCMV6-AC-GFP (PS100010)
E. coli Selection:	Ampicillin (100 ug/mL)
ORF Nucleotide Sequence:	>RG225450 representing NM_001114632 Red=Cloning site Blue=ORF Green=Tags(s)

TTTTGTAATACGACTCACTATAGGGCGGCCGGGAATTCGTCGACTGGATCCGGTACCGAGGAGATCTGCC  
GCC**CGATCGCC**

ATGGCGGAGGCGGCTTTGGAAGCCGTGCGGAGCGAGTTACGAGAATTCCTGGCCGCTGCAAGGGAGCTCT  
GCGTGCCCTCTTGCTGTGCCCTACCTGGACAAACCCCAACTCCGCTCCACTTCTACCGGGACTGGGTCTG  
CCCCAACAGGCCCGTGCATTATCCGCAACGCTCTGCAGCACTGGCCGGCCCTCCAGAAGTGGTCCCTCCCC  
TATTTTCAGAGCCACAGTGGGCTCCACAGAGGTGAGTGTGGCCGTGACCCAGATGGTTACGCGGATGCCG  
TGAGAGGGGATCGCTTCATGATGCCAGCTGAGCGCCGCTGCCCTGAGCTTCGTGCTGGATGTGCTGGA  
GGCCCGGCCAGCACCCCTGGAGTCTCTATGTGCAAGAAGCAGTCTCCAACCTGCCAGCGAGCTGCC  
CAGCTGCTGCCTGATCTGGAATCCCATGTGCCCTGGCCCTCCGAAGCCCTGGGAAAGATGCCCGATGCTG  
TGAACCTTCTGGCTGGGGAGGCGGCTGCAGTGACTTCTTTGCACAAGGACCACTATGAGAACCTCTACTG  
CGTGGTCTCAGGAGAGAAGCATTTCCTGTTCCATCCGCCAGCGACCGCCCTTCATCCCCTATGAGCTG  
TACACGCCGCAACCTACCAGCTAACTGAAGAGGGCACCTTTAAGGTGGTGGATGAAGAGGCCATGGAGA  
AGGTGCCCTGGATCCCACTGGACCCCTTGGCGCCAGACCTAGCACGGTACCCTAGTTACAGTCAGGCCCA  
GGCCCTTCGCTGCACGGTGGCGCCGGTGGAGATGCTCTATCTGCCGCTCTGTGGTTCCACCACGTCAG  
CAGTCCCAGGGCTGCATCGCAGTGAATTTCTGGTATGACATGGAATACGACCTCAAGTATAGTTACTTCC  
AGCTGCTCGACTCCCTACCAAGGCTTCAGGCCTTAC

**ACGCGT**ACGCGGCCGCTCGAG - GFP Tag - GTTTAA



[View online »](#)

**Protein Sequence:** >RG225450 representing NM\_001114632  
Red=Cloning site Green=Tags(s)

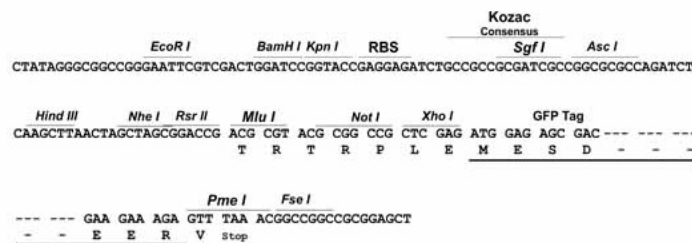
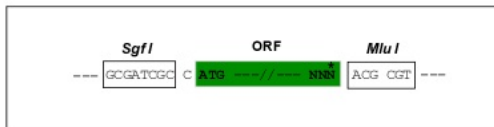
MAEAALEAVRSELREFPAAARELCVPLAVPYLDKPPTPLHFYRDWVCPNRPCIIRNALQHPALQKWSLP  
 YFRATVGSSTEVSAVTPDGYADAVRGDRFMMPAERRRPLSFVLDVLEGRAQHGPVLYVQKQCSNLPSELP  
 QLLPDLESHVPWASEALGKMPDAVNFWLGEAAAVTSLHKDHYENLYCVVSGEKHFLFHPPSDRPFIPYEL  
 YTPATYQLTEEGTFKVVDEEAMEKVPWIPLDPLAPDLARYPSYSQAQALRCTVRAGEMLYLPALWFHHVQ  
 QSQGCIAVNFWDMEYDLKYSYFQLLDSLTKASGLD

TRTRPLE - GFP Tag - V

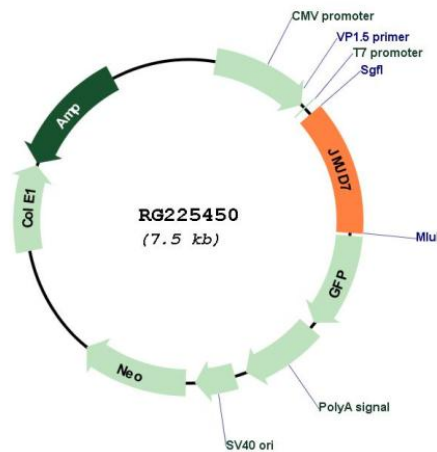
**Restriction Sites:** SgfI-MluI

**Cloning Scheme:**

Cloning sites used for ORF Shutting:



**Plasmid Map:**



**ACCN:** NM\_001114632

**ORF Size:** 948 bp

<b>OTI Disclaimer:</b>	The molecular sequence of this clone aligns with the gene accession number as a point of reference only. However, individual transcript sequences of the same gene can differ through naturally occurring variations (e.g. polymorphisms), each with its own valid existence. This clone is substantially in agreement with the reference, but a complete review of all prevailing variants is recommended prior to use. <a href="#">More info</a>
<b>OTI Annotation:</b>	This clone was engineered to express the complete ORF with an expression tag. Expression varies depending on the nature of the gene.
<b>Components:</b>	The ORF clone is ion-exchange column purified and shipped in a 2D barcoded Matrix tube containing 10ug of transfection-ready, dried plasmid DNA (reconstitute with 100 ul of water).
<b>Reconstitution Method:</b>	<ol style="list-style-type: none"><li>1. Centrifuge at 5,000xg for 5min.</li><li>2. Carefully open the tube and add 100ul of sterile water to dissolve the DNA.</li><li>3. Close the tube and incubate for 10 minutes at room temperature.</li><li>4. Briefly vortex the tube and then do a quick spin (less than 5000xg) to concentrate the liquid at the bottom.</li><li>5. Store the suspended plasmid at -20°C. The DNA is stable for at least one year from date of shipping when stored at -20°C.</li></ol>
<b>RefSeq:</b>	<a href="#">NM_001114632.2</a>
<b>RefSeq Size:</b>	1439 bp
<b>RefSeq ORF:</b>	951 bp
<b>Locus ID:</b>	100137047
<b>UniProt ID:</b>	<a href="#">P0C870</a>
<b>Cytogenetics:</b>	15q15.1
<b>Gene Summary:</b>	This gene encodes a highly conserved protein with a JmjC domain, which are part of the cupin metalloenzyme superfamily. JmjC proteins may function as 2-oxoglutarate-Fe(II)-dependent dioxygenases. Most tissues also express read-through transcripts from this gene into the downstream phospholipase A2, group IVB (cytosolic) gene, some of which may encode fusion proteins combining the N-terminus of this protein with the phospholipase A2, group IVB protein. [provided by RefSeq, Jul 2008]