

Product datasheet for **RG225448**

Calumenin (CALU) (NM_001130674) Human Tagged ORF Clone

Product data:

Product Type:	Expression Plasmids
Product Name:	Calumenin (CALU) (NM_001130674) Human Tagged ORF Clone
Tag:	TurboGFP
Symbol:	CALU
Mammalian Cell Selection:	Neomycin
Vector:	pCMV6-AC-GFP (PS100010)
E. coli Selection:	Ampicillin (100 ug/mL)
ORF Nucleotide Sequence:	>RG225448 representing NM_001130674 Red=Cloning site Blue=ORF Green=Tags(s)

TTTTGTAATACGACTCACTATAGGGCGGCCGGGAATTCGTCGACTGGATCCGGTACCGAGGAGATCTGCC
GCC**CGATCGCC**

ATGGACCTGCGACAGTTTCTTATGTGCCTGTCCCTGTGCACAGCCTTTCCTTGAGCAAACCCACAGAAA
AGAAGGACCGTGTACATCATGAGCCTCAGCTCAGTGACAAGGTTCAATGATGCTCAGAGTTTTGATTA
TGACCATGATGCCTTCTGGGTGCTGAAGAAGCAAAGACCTTTGATCAGCTGACACCAGAAGAGAGCAAG
GAAAGGCTTGAATGATTGTAGATAAAAATAGACGCGGATAAAGATGGGTTTGTGACGGAGGGGAGCTGA
AATCCTGGATTAAGCACGCCAGAAGAAATACATATATGACAATGTTGAAAACCAATGGCAGGATTTGA
TATGAATCAAGACGGCTTAATCTCCTGGGATGAGTACAGAAACGTGACTTATGGCACTTACCTGGATGAT
CCAGATCCTGATGATGGATTTAACTATAAACAGATGATGGTTAGAGATGAGCGGAGGTTTAAATGGCAG
ACAAGGATGGAGACCTCATTGCCACCAAGGAGGAGTTCACAGCTTTCCTGCACCCTGAGGAGTATGACTA
CATGAAAGATATAGTAGTACAGGAAACAATGGAAGATATAGATAAGAATGCTGATGGTTTCATTGATCTA
GAAGAGTATATTGGTGACATGTACAGCCATGATGGGAATACTGATGAGCCAGAATGGGTAAGACAGAGC
GAGAGCAGTTTGTGAGTTTCGGGATAAGAACCGTATGGGAAGATGGACAAGGAAGAGACCAAAGACTG
GATCCTTCCCTCAGACTATGATCATGCAGAGCCAGAAGCCAGGCACCTGGTCTATGAATCAGACAAAAC
AAGGATGGCAAGCTTACCAAGGAGGAGATCGTTGACAAGTATGACTTATTTGTTGCAGCCAGGCCACAG
ATTTTGGGAGGCCCTTAGTACGGCATGATGAGTTC

ACGCGTACGCGGCCGCTCGAG - GFP Tag - GTTTAA



[View online »](#)

Protein Sequence: >RG225448 representing NM_001130674
Red=Cloning site Green=Tags(s)

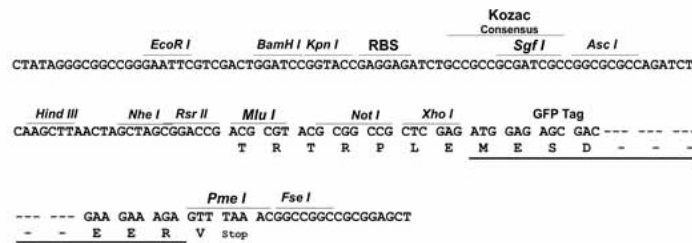
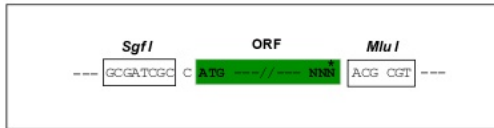
MDLRQFLMCLSLCTAFALSKPTEKKDRVHHEPQLSDKVHNDASQSFYDHDFAFLGAEAEAKTFDQLTPPEESK
 ERLGMIVDKIDADKDFVTEGELKSWIKHAQKKYIYDNVENQWQEFDMNQDGLISWDEYRNVTYGTYLDD
 PDPDDGFNYKQMMVRDERRFKMADKDGDLIATKEEFTAFLLHPEEYDYMKDIVVQETMEDIDKNADGFIDL
 EEYIGDMYSHDGNTDEPEWVKTEREQFVEFRDKNRDGMKDKKEETKDWILPSDYDHAEAEARHLVYESDQN
 KDGKLTKEEIVDKYDLFVGSQATDFGEALVRHDEF

TRTRPLE - GFP Tag - V

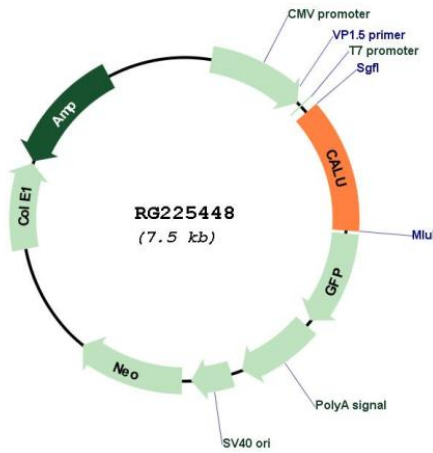
Restriction Sites: SgfI-MluI

Cloning Scheme:

Cloning sites used for ORF Shutting:



Plasmid Map:



ACCN: NM_001130674

ORF Size: 945 bp

OTI Disclaimer:	The molecular sequence of this clone aligns with the gene accession number as a point of reference only. However, individual transcript sequences of the same gene can differ through naturally occurring variations (e.g. polymorphisms), each with its own valid existence. This clone is substantially in agreement with the reference, but a complete review of all prevailing variants is recommended prior to use. More info
OTI Annotation:	This clone was engineered to express the complete ORF with an expression tag. Expression varies depending on the nature of the gene.
Components:	The ORF clone is ion-exchange column purified and shipped in a 2D barcoded Matrix tube containing 10ug of transfection-ready, dried plasmid DNA (reconstitute with 100 ul of water).
Reconstitution Method:	<ol style="list-style-type: none">1. Centrifuge at 5,000xg for 5min.2. Carefully open the tube and add 100ul of sterile water to dissolve the DNA.3. Close the tube and incubate for 10 minutes at room temperature.4. Briefly vortex the tube and then do a quick spin (less than 5000xg) to concentrate the liquid at the bottom.5. Store the suspended plasmid at -20°C. The DNA is stable for at least one year from date of shipping when stored at -20°C.
RefSeq:	NM_001130674.3
RefSeq Size:	3428 bp
RefSeq ORF:	948 bp
Locus ID:	813
UniProt ID:	O43852
Cytogenetics:	7q32.1
Protein Families:	Secreted Protein
Gene Summary:	The product of this gene is a calcium-binding protein localized in the endoplasmic reticulum (ER) and it is involved in such ER functions as protein folding and sorting. This protein belongs to a family of multiple EF-hand proteins (CERC) that include reticulocalbin, ERC-55, and Cab45 and the product of this gene. Alternatively spliced transcript variants encoding different isoforms have been identified. [provided by RefSeq, Oct 2008]