

Product datasheet for **RG225441**

MUC15 (NM_001135092) Human Tagged ORF Clone

Product data:

Product Type:	Expression Plasmids
Product Name:	MUC15 (NM_001135092) Human Tagged ORF Clone
Tag:	TurboGFP
Symbol:	MUC15
Synonyms:	MUC-15; PAS3; PASIII
Mammalian Cell Selection:	Neomycin
Vector:	pCMV6-AC-GFP (PS100010)
E. coli Selection:	Ampicillin (100 ug/mL)
ORF Nucleotide Sequence:	>RG225441 representing NM_001135092 Red=Cloning site Blue=ORF Green=Tags(s)

TTTTGTAATACGACTCACTATAGGGCGGCCGGAATTCGTCGACTGGATCCGGTACCGAGGAGATCTGCC
GCC**CGATCGCC**

ATGGGCATAATACAATCTATTCTTGCCACATCAAGGGATTGTTATTCCTTTAAAAAAAACCAATACCAA
AGAAGCCTACAATGTTGGCCTTAGCCAAAATTCTGTTGATTTCAACGTTGTTTTATTCACCTTCTATCGGG
GAGCCATGGAAAAGAAAATCAAGACATAAACACAACACAGAACATTGCAGAAGTTTTTAAAAAATGGAA
AATAAACCTATTTCTTTGAAAAGTGAAGCAAACCTAAACTCAGATAAAGAAAATATAACCCACCTCAATC
TCAAGGCGAGTCATTCCTCCTTTGAATCTACCCAACAACAGCCACGGAATAACAGATTTCTCCAGTAA
CTCATCAGCAGAGCATTCTTTGGCAGTCTAAAACCCACATCTACCATTTCCACAAGCCCTCCCTTGATC
CATAGCTTTGTTTCTAAAGTGCCTTGAATGCACCTATAGCAGATGAAGATCTTTTGCCCATCTCAGCAC
ATCCCAATGCTACACCTGCTCTGTCTTCAGAAAACCTTCACTTGGTCTTTGGTCAATGACACCGTGAAAAAC
TCCTGATAACAGTTCCATTACAGTTAGCATCCTCTCTTCAGAACCAACTTCTCCATCTGTGACCCCTTG
ATAGTGAACCAAGTGGATGGCTTACCACAAACAGTGATAGCTTCACTGGGTTTACCCTTATCAAGAAA
AAACAACCTACAGCCTACCTTAAAATTCACCAATAATTCAAAACCTTTCCAAATACGTCAGATCCCCA
AAAAGTTCTGCGATTAGACAATGCACCGGAACCTTATGATGTGAGTTTTGGGAATTCTAGCTACTACAAT
CCAACCTTGAATGATTCAGCCATGCCAGAAAGTGAAGAAAATGCACGTGATGGCATTCTATGGATGACA
TACCTCCACTTCGTA

ACGCGTACGCGGCCGCTCGAG - GFP Tag - GTTTAA



[View online »](#)

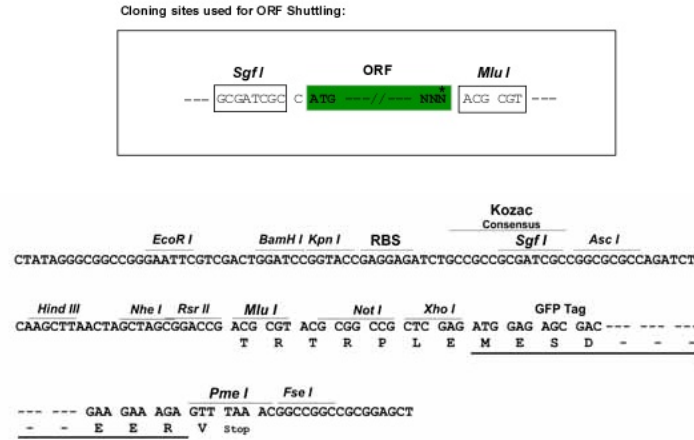
Protein Sequence: >RG225441 representing NM_001135092
Red=Cloning site Green=Tags(s)

MGI IQSILATSRDCYSFKKKPIPKPTMLALAKILLISTLFYSLLSGSHGKENQDINTTQNI AEVFKTME
 NKPI SLESEANLNSDKENITTSNLKASHSPPLNLPNNSHGITDFSSNSSAEHSLGSLKPTSTISTSPPLI
 HSFVSKVPWNAPIADEDLLPISAHPNATPALSSENFTWSLVNDTVKTPDNSSITVLSSEPTSPSVTPL
 IVEPSGWLTTNSDSFTGFTPYQEKTTLQPTLKFTNNSKLPNTSDPQKVLRLDNAPEPYDVSFGNSSYYN
 PTLNDSAMPESEENARDGIPMDDIPPLRTSV

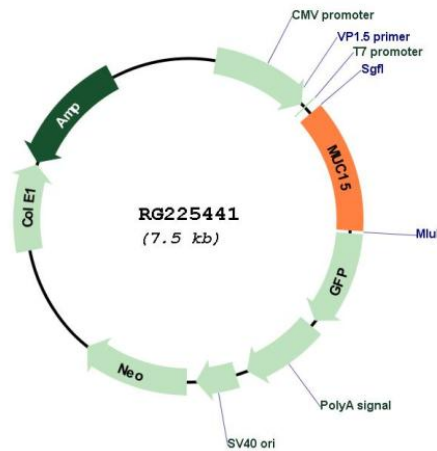
TRTRPLE - GFP Tag - V

Restriction Sites: SgfI-MluI

Cloning Scheme:



Plasmid Map:



ACCN: NM_001135092

ORF Size: 933 bp

OTI Disclaimer:	The molecular sequence of this clone aligns with the gene accession number as a point of reference only. However, individual transcript sequences of the same gene can differ through naturally occurring variations (e.g. polymorphisms), each with its own valid existence. This clone is substantially in agreement with the reference, but a complete review of all prevailing variants is recommended prior to use. More info
OTI Annotation:	This clone was engineered to express the complete ORF with an expression tag. Expression varies depending on the nature of the gene.
Components:	The ORF clone is ion-exchange column purified and shipped in a 2D barcoded Matrix tube containing 10ug of transfection-ready, dried plasmid DNA (reconstitute with 100 ul of water).
Reconstitution Method:	<ol style="list-style-type: none">1. Centrifuge at 5,000xg for 5min.2. Carefully open the tube and add 100ul of sterile water to dissolve the DNA.3. Close the tube and incubate for 10 minutes at room temperature.4. Briefly vortex the tube and then do a quick spin (less than 5000xg) to concentrate the liquid at the bottom.5. Store the suspended plasmid at -20°C. The DNA is stable for at least one year from date of shipping when stored at -20°C.
RefSeq:	NM_001135092.2
RefSeq Size:	3259 bp
RefSeq ORF:	936 bp
Locus ID:	143662
UniProt ID:	Q8N387
Cytogenetics:	11p14.2
Protein Families:	Secreted Protein, Transmembrane
Gene Summary:	May play a role in the cell adhesion to the extracellular matrix.[UniProtKB/Swiss-Prot Function]