

## Product datasheet for **RG225412**

### SLC8A3 (NM\_001130417) Human Tagged ORF Clone

#### Product data:

Product Type:	Expression Plasmids
Product Name:	SLC8A3 (NM_001130417) Human Tagged ORF Clone
Tag:	TurboGFP
Symbol:	SLC8A3
Synonyms:	NCX3
Mammalian Cell Selection:	Neomycin
Vector:	pCMV6-AC-GFP (PS100010)
E. coli Selection:	Ampicillin (100 ug/mL)
ORF Nucleotide Sequence:	>RG225412 representing NM_001130417 Red=Cloning site Blue=ORF Green=Tags(s)

TTTTGTAATACGACTCACTATAGGGCGGCCGGAATTCGTCGACTGGATCCGGTACCGAGGAGATCTGCC  
GCC**CGATCGCC**

ATGGAACGTGGAATATCAGATGTGACAGACAGGAAGCTGACTATGGAAGAAGAGGAGGCCAAGAGGATAG  
CAGAGATGGGAAAGCCAGTATTGGGTGAACACCCCAAACCTAGAAGTCATCATTGAAGAGTCCTATGAGTT  
CAAGACTACGGTGGACAACTGATCAAGAAGACAAACCTGGCCTTGGTTGTGGGGACCCATTCTGGAGG  
GACCAGTTCATGGAGGCCATCACCGTCAGTGCAGCAGGGGATGAGGATGAGGATGAATCCGGGGAGGAGA  
GGCTGCCCTCCTGCTTTGACTACGTCATGCACTTCCTGACTGTCTTCTGGAAGGTGCTGTTGCCTGTGT  
GCCCCCAGAGTACTGCCACGGCTGGCCTGCTTCGCCGTCTCCATCCTCATCATTGGCATGCTCACC  
GCCATCATTGGGGACCTGGCCTCGCACTTCGGCTGCACCATTTGGTCTCAAAGATTCAGTCACAGCTGTTG  
TTTTCGTGGCATTGGCACCTCTGTCCCAGATACGTTTGGCAGCAAAGCTGCTGCCCTCCAGGATGTATA  
TGCAGACGCCCTCCATTGGCAACGTGACGGGCAGCAACGCCGTCATGTCTTCTGGGCATCGGCCTGGCC  
TGGTCCGTGGCCGCCATCTACTGGGCTCTGCAGGGACAGGAGTTCACCGTGTCCGCCGCCACACTGGCCT  
TCTCCGTACCCTCTTACCATCTTTGCATTTGTCTGCATCAGCGTGCTTTGTACCGAAGGCCGCCGCA  
CCTGGGAGGGGAGCTTGGTGGCCCCGTGGCTGCAAGCTCGCCACAACATGGCTCTTTGTGAGCCTGTGG  
CTCCTCTACATACTCTTTGCCACACTAGAGGCCATTGCTACATCAAGGGGTTT

**ACGCGT**ACGCGGCCGCTCGAG - GFP Tag - GTTTAA



[View online »](#)

Protein Sequence: >RG225412 representing NM\_001130417  
 Red=Cloning site Green=Tags(s)

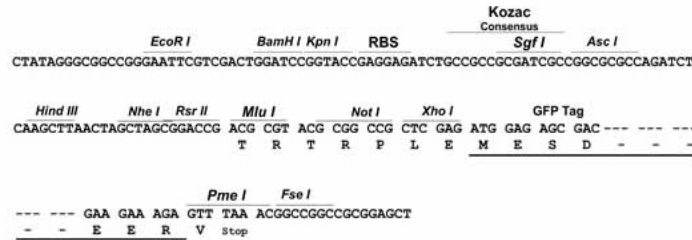
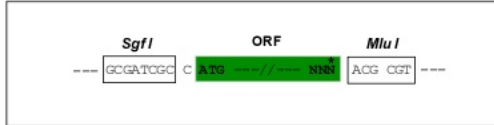
MERGISDVTDRKLTMEEEEAKRIAEMGKPVLGHPKLEVIIEESYEFKTTVDKLIKKTNLALVVGTHSWR  
 DQFMEAITYSAAGDEDEDESGEERLPSCFDYVMHFLT VFWKVL FACVPPEYCHGWACF AVSILIIIGMLT  
 AIIIGDLASHFGCTIGLKDSVTAVVFAVFGTSVDPDTFASKAAALQDVYADASIGNVTGSNAVNVFLGIGLA  
 WSVAAIYWALQGQEFHVSAGTLAFSVTLFTIFAFVCISVLLYRRRPHLGGELGGPRGCKLATTWLFVSLW  
 LLYILFATLEAYCYIKGF

TRTRPLE - GFP Tag - V

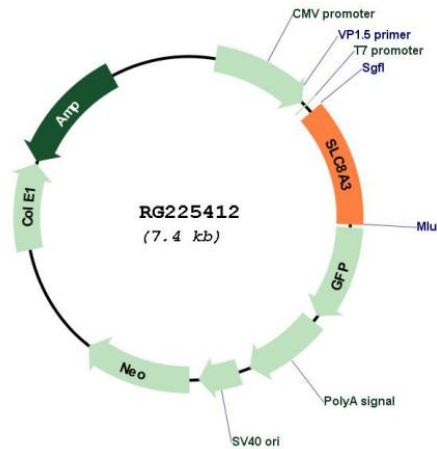
Restriction Sites: SgfI-MluI

Cloning Scheme:

Cloning sites used for ORF Shuttling:



Plasmid Map:



ACCN: NM\_001130417

ORF Size: 894 bp

<b>OTI Disclaimer:</b>	The molecular sequence of this clone aligns with the gene accession number as a point of reference only. However, individual transcript sequences of the same gene can differ through naturally occurring variations (e.g. polymorphisms), each with its own valid existence. This clone is substantially in agreement with the reference, but a complete review of all prevailing variants is recommended prior to use. <a href="#">More info</a>
<b>OTI Annotation:</b>	This clone was engineered to express the complete ORF with an expression tag. Expression varies depending on the nature of the gene.
<b>Components:</b>	The ORF clone is ion-exchange column purified and shipped in a 2D barcoded Matrix tube containing 10ug of transfection-ready, dried plasmid DNA (reconstitute with 100 ul of water).
<b>Reconstitution Method:</b>	<ol style="list-style-type: none"><li>1. Centrifuge at 5,000xg for 5min.</li><li>2. Carefully open the tube and add 100ul of sterile water to dissolve the DNA.</li><li>3. Close the tube and incubate for 10 minutes at room temperature.</li><li>4. Briefly vortex the tube and then do a quick spin (less than 5000xg) to concentrate the liquid at the bottom.</li><li>5. Store the suspended plasmid at -20°C. The DNA is stable for at least one year from date of shipping when stored at -20°C.</li></ol>
<b>RefSeq:</b>	<a href="#">NM_001130417.3</a>
<b>RefSeq Size:</b>	2954 bp
<b>RefSeq ORF:</b>	897 bp
<b>Locus ID:</b>	6547
<b>UniProt ID:</b>	<a href="#">P57103</a>
<b>Cytogenetics:</b>	14q24.2
<b>Protein Families:</b>	Transmembrane
<b>Protein Pathways:</b>	Calcium signaling pathway
<b>Gene Summary:</b>	This gene encodes a member of the sodium/calcium exchanger integral membrane protein family. Na <sup>+</sup> /Ca <sup>2+</sup> exchange proteins are involved in maintaining Ca <sup>2+</sup> homeostasis in a wide variety of cell types. The protein is regulated by intracellular calcium ions and is found in both the plasma membrane and intracellular organellar membranes, where exchange of Na <sup>+</sup> for Ca <sup>2+</sup> occurs in an electrogenic manner. Alternative splicing has been observed for this gene and multiple variants have been described. [provided by RefSeq, Aug 2013]