

Product datasheet for **RG225399**

delta Sarcoglycan (SGCD) (NM_001128209) Human Tagged ORF Clone

Product data:

| | |
|---------------------------|--|
| Product Type: | Expression Plasmids |
| Product Name: | delta Sarcoglycan (SGCD) (NM_001128209) Human Tagged ORF Clone |
| Tag: | TurboGFP |
| Symbol: | SGCD |
| Synonyms: | 35DAG; CMD1L; DAGD; LGMDR6; SG-delta; SGCDP; SGD |
| Mammalian Cell Selection: | Neomycin |
| Vector: | pCMV6-AC-GFP (PS100010) |
| E. coli Selection: | Ampicillin (100 ug/mL) |
| ORF Nucleotide Sequence: | >RG225399 representing NM_001128209 Red=Cloning site Blue=ORF Green=Tags(s) |

TTTTGTAATACGACTCACTATAGGGCGGCCGGAATTCGTCGACTGGATCCGGTACCGAGGAGATCTGCC
GCC**CGGATCGCC**

ATGCCTCAGGAGCAGTACACTCACCACCGGAGCACCATGCCTGGCTCTGTGGGGCCACAGGTATACAAGG
TGGGGATTTATGGCTGGCGAAACGATGCCTGTATTTCTTTGTCCTGCTCCTCATGATTTTAATACTGGT
GAACTTGGCCATGACCATCTGGATTCTCAAAGTCATGAACTTACAATTGATGGAATGGGAAACCTGAGG
ATCACAGAAAAAGGTCTAAAGCTAGAAGGAGACTCTGAATTCTTACAACCTCTCTACGCCAAAGAAATCC
AGTCCCGACCAGGTAATGCCCTGTACTTCAAGTCTGCCAGAAATGTTACAGTGAACATTCTCAATGACCA
GACTAAAGTGCTAACTCAGCTTATAACAGGTCCAAAAGCCGTAGAAGCTTATGGTAAAAAATTTGAGGTA
AAAAGTGTCTGAAAAATTGCTCTTCTGTCAGACAATAATGAAGTGGTAGTAGGAGCTGAAAAGATTAC
GAGTTTTAGGAGCGGAGGGCACAGTGTTCCTAAATCTATAGAAACACCTAATGTCAGGGCAGACCCCTT
CAAAGAAGTAAGGTTGGAGTCCCCAACCCGGTCTCTAGTGATGGAGGCCCAAAAGGAGTGGAAATCAAT
GCAGAAGCTGGCAATATGGAAGCCACCTGCAGGACAGAGCTGAGACTGGAATCCAAGATGGAGAGATTA
AGTTAGATGCTGCGAAAAATCAGGCTACCTAGACTGCCTCATGGATCCTACACGCCTACAGGAACGAGGCA
GAAGGTCTTCGAGATCTGCGTCTGCGCCAATGGGAGATTATTCTGTCTCAGGCAGGAGCTGGGTCCACT
TGTCAGATAAACACAAGTGTCTGCCTC

ACGCGTACGCGGCCGCTCGAG - GFP Tag - GTTTAA



[View online »](#)

Protein Sequence: >RG225399 representing NM_001128209
 Red=Cloning site Green=Tags(s)

MPQEYTHHRSTMPGSVGPQVYKVGIYGWRKRCLYFFVLLLMILILVNLAMTIWILKVMNFTIDGMGNLR
 ITEKGLKLEGDSEFLQPLYAKEIQSRPGNALYFKSARNVTVNILNDQTKVLTQLITGPKAVEAYGKKFEV
 KTVSGKLLFSADNNEVVGAERLRLVGAEGTVFPKSIETPNVRADPFKELRLESPTRSLVMEAPKGVein
 AEAGNMEATCRTELRLLESKDGEIKLDAAKIRLRLPHGSYTPTGTRQKVFICVCANGRLFLSQAGAGST
 CQINTSVCL

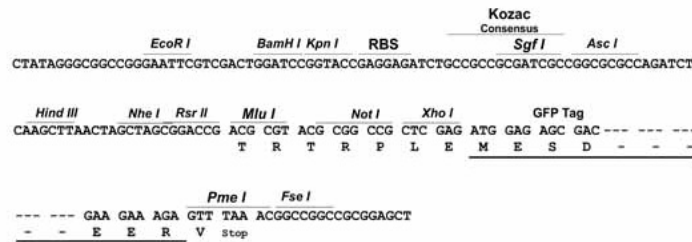
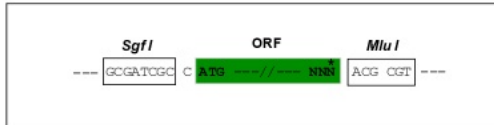
TRTRPLE - GFP Tag - V

Restriction Sites:

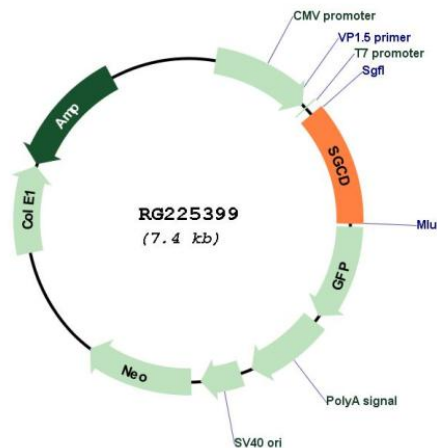
Sgfl-MluI

Cloning Scheme:

Cloning sites used for ORF Shuttling:



Plasmid Map:



ACCN: NM_001128209

ORF Size: 867 bp

| | |
|-------------------------------|--|
| OTI Disclaimer: | The molecular sequence of this clone aligns with the gene accession number as a point of reference only. However, individual transcript sequences of the same gene can differ through naturally occurring variations (e.g. polymorphisms), each with its own valid existence. This clone is substantially in agreement with the reference, but a complete review of all prevailing variants is recommended prior to use. More info |
| OTI Annotation: | This clone was engineered to express the complete ORF with an expression tag. Expression varies depending on the nature of the gene. |
| Components: | The ORF clone is ion-exchange column purified and shipped in a 2D barcoded Matrix tube containing 10ug of transfection-ready, dried plasmid DNA (reconstitute with 100 ul of water). |
| Reconstitution Method: | <ol style="list-style-type: none">1. Centrifuge at 5,000xg for 5min.2. Carefully open the tube and add 100ul of sterile water to dissolve the DNA.3. Close the tube and incubate for 10 minutes at room temperature.4. Briefly vortex the tube and then do a quick spin (less than 5000xg) to concentrate the liquid at the bottom.5. Store the suspended plasmid at -20°C. The DNA is stable for at least one year from date of shipping when stored at -20°C. |
| RefSeq: | NM_001128209.2 |
| RefSeq Size: | 9759 bp |
| RefSeq ORF: | 870 bp |
| Locus ID: | 6444 |
| UniProt ID: | Q92629 |
| Cytogenetics: | 5q33.2-q33.3 |
| Protein Families: | Transmembrane |
| Protein Pathways: | Arrhythmogenic right ventricular cardiomyopathy (ARVC), Dilated cardiomyopathy, Hypertrophic cardiomyopathy (HCM), Viral myocarditis |
| Gene Summary: | The protein encoded by this gene is one of the four known components of the sarcoglycan complex, which is a subcomplex of the dystrophin-glycoprotein complex (DGC). DGC forms a link between the F-actin cytoskeleton and the extracellular matrix. This protein is expressed most abundantly in skeletal and cardiac muscle. Mutations in this gene have been associated with autosomal recessive limb-girdle muscular dystrophy and dilated cardiomyopathy. Alternatively spliced transcript variants encoding distinct isoforms have been observed for this gene. [provided by RefSeq, Jul 2008] |