

Product datasheet for **RG225392**

KCTD15 (NM_001129995) Human Tagged ORF Clone

Product data:

Product Type: Expression Plasmids
 Product Name: KCTD15 (NM_001129995) Human Tagged ORF Clone
 Tag: TurboGFP
 Symbol: KCTD15
 Mammalian Cell Selection: Neomycin
 Vector: pCMV6-AC-GFP (PS100010)
 E. coli Selection: Ampicillin (100 ug/mL)
 ORF Nucleotide Sequence: >RG225392 representing NM_001129995
 Red=Cloning site Blue=ORF Green=Tags(s)

TTTTGTAATACGACTCACTATAGGGCGGCCGGGAATTCGTCGACTGGATCCGGTACCGAGGAGATCTGCC
 GCC**CGATCGCC**

ATGCCTACCGCAAGGAGCGGCCGAGCGGGTCTCGCTTCACACACACGGCAGCACCGGCACCGCGGAGG
 GAGGAAACATGTCCCGGCTGTCTCTCACCCGGTCGCCTGTGTCTCCCTGGCTGCCAGGGCATCCCCCT
 GCCAGCCAGCTACCAAGTCCAATGCACCTGTGCACATCGATGTGGGCGGCCACATGTACACCAGCAGC
 CTGGCCACGCTCACCAAGTACCCTGACTCCAGGATAAGCCGCCTTTCAATGGCACTGAACCCATCGTCC
 TGGACAGTTTGAAGCAACATTATTTATTGACCGGGATGGGAGATTTTCCGCTACGTCCTGAGCTTCCT
 GCGGACGTCCAAGCTGCTGCTTCCGGATGACTTTAAGGACTTCAGTCTGCTGTACGAGGAGCGCGCTAC
 TATCAGCTCCAGCCATGGTGCGCGAGCTGGAGCGCTGGCAGCAGGAGCAGGAGCAGCGGCGCCGAGCC
 GGGCCTGTGACTGCCTGGTGGTGCAGCTCACGCCGACTTGGGCGAGCGGATCGCACTCAGCGGCGAGAA
 GGCCCTCATCGAGGAGGTCTTCCCGAGACCGGAGACGTATGTGCAACTCCGTCAACGCCGGCTGGAAC
 CAGGACCCACGCAGTCATCCGCTTCCCGCTCAATGGCTACTGCCGGCTCAACTCGGTACAGGTCTGG
 AGCGGCTGTTCCAGAGGGTTTCAGCGTGGCTGCGTCTGTGGGGCGGTGTGGACTCCTCCAGTTCAG
 CGAGTATGTGCTTTCGCGGAGGAGCGGCGGCCAGCCACCCCACTGCTGTTCAATCAAGCAGGAA
 CCCTGGAC

ACGCGTACGCGGCCGCTCGAG - GFP Tag - GTTTAA



[View online »](#)

Protein Sequence: >RG225392 representing NM_001129995
 Red=Cloning site Green=Tags(s)

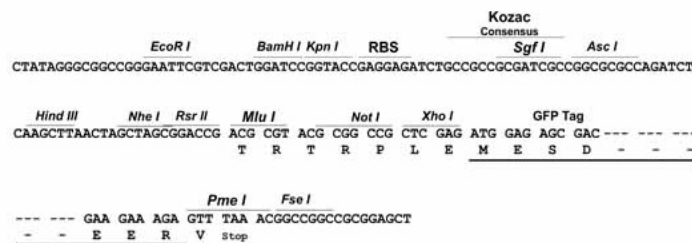
MPHRKERPSGSSLHTHGSTGTAEGGNMSRLSLTRSPVSPLAAQGIPLPAQLTKSNAPVHIDVGGHMYTSS
 LATLTKYPDSRISRLFNGTEPIVLDLQHYFIDRDGEIFRYVLSFLRRTSKLLLPDDFKDFSLLYEARY
 YQLQPMVRELERWQQEQEQRRRSRACDCLVVRVTPDLGERIALSGEKALIEEVFPETGDMCNSVNAGWN
 QDPHTVIRFPLNGYCRLNSVQVLERLFQRGF SVAASC GGVDSSQFSEYVLCREERRPQPTPTAVRIKQE
 PLD

TRTRPLE - GFP Tag - V

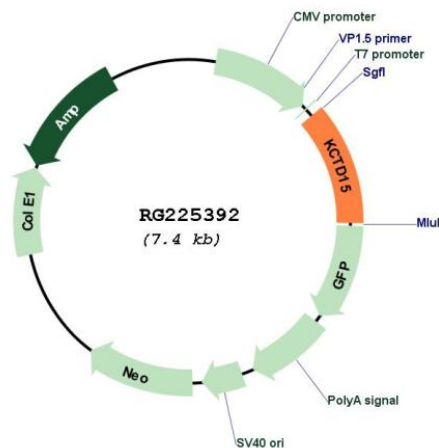
Restriction Sites: SgfI-MluI

Cloning Scheme:

Cloning sites used for ORF Shutting:



Plasmid Map:



ACCN: NM_001129995

ORF Size: 849 bp

| | |
|-------------------------------|---|
| OTI Disclaimer: | The molecular sequence of this clone aligns with the gene accession number as a point of reference only. However, individual transcript sequences of the same gene can differ through naturally occurring variations (e.g. polymorphisms), each with its own valid existence. This clone is substantially in agreement with the reference, but a complete review of all prevailing variants is recommended prior to use. More info |
| OTI Annotation: | This clone was engineered to express the complete ORF with an expression tag. Expression varies depending on the nature of the gene. |
| Components: | The ORF clone is ion-exchange column purified and shipped in a 2D barcoded Matrix tube containing 10ug of transfection-ready, dried plasmid DNA (reconstitute with 100 ul of water). |
| Reconstitution Method: | <ol style="list-style-type: none">1. Centrifuge at 5,000xg for 5min.2. Carefully open the tube and add 100ul of sterile water to dissolve the DNA.3. Close the tube and incubate for 10 minutes at room temperature.4. Briefly vortex the tube and then do a quick spin (less than 5000xg) to concentrate the liquid at the bottom.5. Store the suspended plasmid at -20°C. The DNA is stable for at least one year from date of shipping when stored at -20°C. |
| RefSeq: | NM_001129995.2 |
| RefSeq Size: | 3933 bp |
| RefSeq ORF: | 852 bp |
| Locus ID: | 79047 |
| UniProt ID: | Q96S11 |
| Cytogenetics: | 19q13.11 |
| Protein Families: | Ion Channels: Other |
| Gene Summary: | During embryonic development, interferes with neural crest formation (By similarity). Inhibits AP2 transcriptional activity by interaction with its activation domain.[UniProtKB/Swiss-Prot Function] |