

Product datasheet for **RG225387**

EEF1D (NM_001130057) Human Tagged ORF Clone

Product data:

Product Type: Expression Plasmids
Product Name: EEF1D (NM_001130057) Human Tagged ORF Clone
Tag: TurboGFP
Symbol: EEF1D
Synonyms: EF-1D; EF1D; FP1047
Mammalian Cell Selection: Neomycin
Vector: pCMV6-AC-GFP (PS100010)
E. coli Selection: Ampicillin (100 ug/mL)
ORF Nucleotide Sequence: >RG225387 representing NM_001130057
Red=Cloning site Blue=ORF Green=Tags(s)

TTTTGTAATACGACTCACTATAGGGCGGCCGGAATTCGTCGACTGGATCCGGTACCGAGGAGATCTGCC
GCC**CGCATCGCC**

ATGGCTACAACTTCCTAGCACATGAGAAGATCTGGTTCGACAAGTTCAAATATGACGACGCAGAAAAGGA
GATTCTACGAGCAGATGAACGGCCTGTGGCAGGTGCCTCCCGCCAGGAGAACGGCGCCAGCGTGATCCT
CCGTGACATTGCGAGAGCCAGAGAGAACATCCAGAAATCCCTGGCTGGAAGCTCAGGCCCGGGCCTCC
AGCGGCACCAGCGGAGACCACGGTGAGCTCGTCGTCGGATTGCCAGTCTGGAAGTGAGAACAGAGTC
TGCGTGGCGTGGTACAGGAGCTGCAGCAGGCCATCTCCAAGCTGGAGGCCCGGCTGAACGTGCTGGAGAA
GAGCTCGCCTGGCCACCGGGCCACGGCCCCACAGACCCAGCACGTATCTCCCATGCGCCAAGTGGAGCCC
CCAGCCAAGAAGCCAGCCACACCAGCAGAGGATGACGAGGATGATGACATTGACCTGTTTGGCAGTGACA
ATGAGGAGGAGGACAAGGAGGGCCACAGCTGCGGGAGGAGCGGCTACGGCAGTACGCGGAGAAGAAGGC
CAAGAAGCCTGCACTGGTGGCCAAGTCTCCATCCTGCTGGATGTCAAGCCTTGGGATGATGAGACGGAC
ATGGCCCAGCTGGAGGCCTGTGTGCGCTATCCAGCTGGACGGGCTGGTCTGGGGGCTTCAAGCTGG
TGCCCGTGGGCTACGGTATCCGGAAGCTACAGATTCAGTGTGTGGTGGAGGACGACAAGTGGGGACAGA
CTTGCTGGAGGAGGAGATCACCAAGTTTGAGGAGCACGTGCAGAGTGTGCATATCGCAGCTTCAACAAG
ATC

ACGCGTACGCGGCCGCTCGAG - GFP Tag - GTTTAA



[View online »](#)

Protein Sequence: >RG225387 representing NM_001130057
 Red=Cloning site Green=Tags(s)

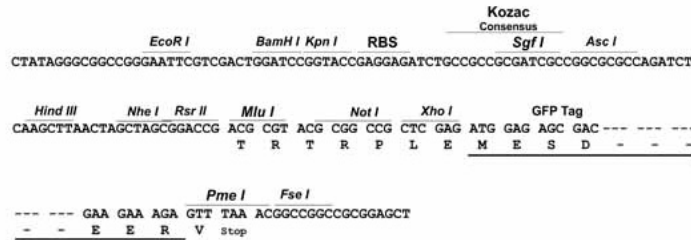
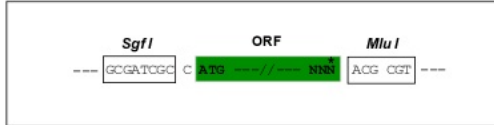
MATNFLAHEKIWFDFKFKYDDAERRFYEQMNGPVAGASRQENGASVILRDIARARENIQKSLAGSSGPGAS
 SGTSGDHGELVVRASLEVENQSLRGVVQELQQATISKLEARLNVLEKSSPGHRATAPQTQHVSPMRQVEP
 PAKKPTPAEDDEDDIDLFGSDNEEDKEAAQLREERLRQYAEKKAKKPPALVAKSSILLDVKPWDDET
 MAQLEACVRSIQLDGLVWGASKLVPVGYGIRKLQIQCVVEDDKVGTDLLEEEITKFEHHVQSVDIAAFNK
 I

TRTRPLE - GFP Tag - V

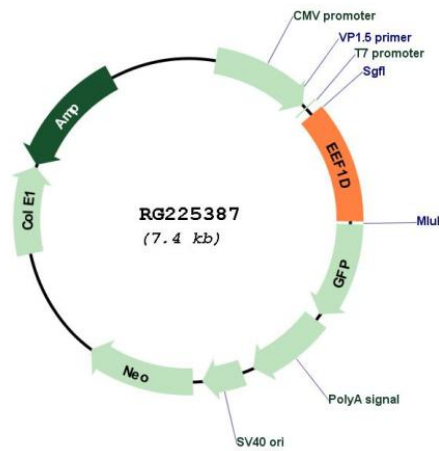
Restriction Sites: SgfI-MluI

Cloning Scheme:

Cloning sites used for ORF Shuttling:



Plasmid Map:



ACCN: NM_001130057

ORF Size: 843 bp

OTI Disclaimer:	The molecular sequence of this clone aligns with the gene accession number as a point of reference only. However, individual transcript sequences of the same gene can differ through naturally occurring variations (e.g. polymorphisms), each with its own valid existence. This clone is substantially in agreement with the reference, but a complete review of all prevailing variants is recommended prior to use. More info
OTI Annotation:	This clone was engineered to express the complete ORF with an expression tag. Expression varies depending on the nature of the gene.
Components:	The ORF clone is ion-exchange column purified and shipped in a 2D barcoded Matrix tube containing 10ug of transfection-ready, dried plasmid DNA (reconstitute with 100 ul of water).
Reconstitution Method:	<ol style="list-style-type: none">1. Centrifuge at 5,000xg for 5min.2. Carefully open the tube and add 100ul of sterile water to dissolve the DNA.3. Close the tube and incubate for 10 minutes at room temperature.4. Briefly vortex the tube and then do a quick spin (less than 5000xg) to concentrate the liquid at the bottom.5. Store the suspended plasmid at -20°C. The DNA is stable for at least one year from date of shipping when stored at -20°C.
RefSeq:	NM_001130057.3
RefSeq Size:	1190 bp
RefSeq ORF:	846 bp
Locus ID:	1936
UniProt ID:	P29692
Cytogenetics:	8q24.3
Gene Summary:	This gene encodes a subunit of the elongation factor-1 complex, which is responsible for the enzymatic delivery of aminoacyl tRNAs to the ribosome. This subunit, delta, functions as guanine nucleotide exchange factor. It is reported that following HIV-1 infection, this subunit interacts with HIV-1 Tat. This interaction results in repression of translation of host cell proteins and enhanced translation of viral proteins. Several alternatively spliced transcript variants encoding multiple isoforms have been found for this gene. Related pseudogenes have been defined on chromosomes 1, 6, 7, 9, 11, 13, 17, 19.[provided by RefSeq, Aug 2010]