

## Product datasheet for **RG225347**

### **GJB6 (NM\_001110219) Human Tagged ORF Clone**

#### Product data:

Product Type:	Expression Plasmids
Product Name:	GJB6 (NM_001110219) Human Tagged ORF Clone
Tag:	TurboGFP
Symbol:	GJB6
Synonyms:	CX30; DFNA3; DFNA3B; DFNB1B; ECTD2; ED2; EDH; HED; HED2
Mammalian Cell Selection:	Neomycin
Vector:	pCMV6-AC-GFP (PS100010)
E. coli Selection:	Ampicillin (100 ug/mL)
ORF Nucleotide Sequence:	>RG225347 representing NM_001110219 Red=Cloning site Blue=ORF Green=Tags(s)

TTTTGTAATACGACTCACTATAGGGCGGCCGGAATTCGTCGACTGGATCCGGTACCGAGGAGATCTGCC  
GCC**CGATCGCC**

ATGGATTGGGGACGCTGCACACTTTCATCGGGGTGTCAACAACTCCACCAGCATCGGGAAGGTGT  
GGATCACAGTCATCTTTATTTCCGAGTCATGATCCTCGTGGTGGCTGCCAGGAAGTGTGGGTGACGA  
GCAAGAGGACTTCGTCTGCAACACTGCAACCGGATGCAAAAATGTGTGCTATGACCACTTTTCCCG  
GTGTCCACATCCGGCTGTGGCCCTCCAGCTGATCTTCGTCTCCACCCAGCGTCTGGTGGCCATGC  
ATGTGGCTACTACAGGCACGAAACCACTCGCAAGTTCAGGCGAGGAGAGAAGAGGAATGATTTCAAAGA  
CATAGAGGACATTAAGCAGAAAGGTTTCGGATAGAGGGTTCGCTGTGGTGGACGTACACCAGCAGCATC  
TTTTCCGAATCATCTTTGAAGCAGCCTTTATGTATGTGTTTTACTTCCTTTACAATGGGTACCACCTGC  
CCTGGGTGTTGAAATGTGGGATTGACCCCTGCCCAACCTTGTGACTGCTTTATTTCTAGGCCAACAGA  
GAAGACCGTGTACCATTTTATGATTCTGCGTCTGTGATTTGCATGCTGCTAACGTGGCAGAGTTG  
TGCTACCTGCTGCTGAAAGTGTGTTTTAGGAGATCAAAGAGAGCACAGACGCAAAAAATCACCCCAATC  
ATGCCCTAAAGGAGAGTAAGCAGAATGAAATGAATGAGCTGATTCAGATAGTGGTCAAAATGCAATCAC  
AGGTTTCCAAGC

**ACGCGT**ACGCGGCCGCTCGAG - GFP Tag - GTTTAA



[View online »](#)

**Protein Sequence:** >RG225347 representing NM\_001110219  
 Red=Cloning site Green=Tags(s)

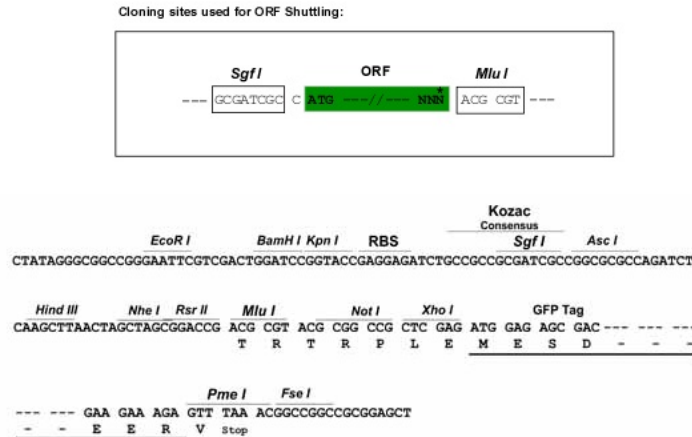
MDWGLLHTFIGGVNKHSTSIGKVWITVIFIFRVMILVVAAQEVWGDEQEDFVCNTLQPGCKNVCYDHFPP  
 VSHIRLWALQLIFVSTPALLVAMHVAYYRHETTRKFRRGEKRNDFKDIEDIKKQKVRIEGLWWTYSSSI  
 FFRIIFEAAFMYVYFYLNGYHLPWVLKCGIDPCPNLVDCFISRPTKTVFTIFMISASVICMLLNVAEL  
 CYLLLLKVCFRRSKRAQTQKNHPNHALKESKQNMNELISDSGQNAITGFPS

TRTRPLE - GFP Tag - V

**Chromatograms:** [https://cdn.origene.com/chromatograms/ja3148\\_c07.zip](https://cdn.origene.com/chromatograms/ja3148_c07.zip)

**Restriction Sites:** SgfI-MluI

**Cloning Scheme:**



**ACCN:** NM\_001110219

**ORF Size:** 783 bp

**OTI Disclaimer:** The molecular sequence of this clone aligns with the gene accession number as a point of reference only. However, individual transcript sequences of the same gene can differ through naturally occurring variations (e.g. polymorphisms), each with its own valid existence. This clone is substantially in agreement with the reference, but a complete review of all prevailing variants is recommended prior to use. [More info](#)

**OTI Annotation:** This clone was engineered to express the complete ORF with an expression tag. Expression varies depending on the nature of the gene.

**Components:** The ORF clone is ion-exchange column purified and shipped in a 2D barcoded Matrix tube containing 10ug of transfection-ready, dried plasmid DNA (reconstitute with 100 ul of water).

**Reconstitution Method:**

1. Centrifuge at 5,000xg for 5min.
2. Carefully open the tube and add 100ul of sterile water to dissolve the DNA.
3. Close the tube and incubate for 10 minutes at room temperature.
4. Briefly vortex the tube and then do a quick spin (less than 5000xg) to concentrate the liquid at the bottom.
5. Store the suspended plasmid at -20°C. The DNA is stable for at least one year from date of shipping when stored at -20°C.

**RefSeq:** [NM\\_001110219.3](#)

**RefSeq Size:** 2178 bp

**RefSeq ORF:** 786 bp

**Locus ID:** 10804

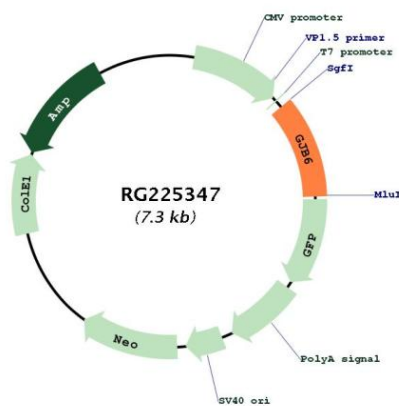
**UniProt ID:** [O95452](#)

**Cytogenetics:** 13q12.11

**Protein Families:** Druggable Genome, Transmembrane

**Gene Summary:** Gap junctions allow the transport of ions and metabolites between the cytoplasm of adjacent cells. They are formed by two hemichannels, made up of six connexin proteins assembled in groups. Each connexin protein has four transmembrane segments, two extracellular loops, a cytoplasmic loop formed between the two inner transmembrane segments, and the N- and C-terminus both being in the cytoplasm. The specificity of the gap junction is determined by which connexin proteins comprise the hemichannel. In the past, connexin protein names were based on their molecular weight, however the new nomenclature uses sequential numbers based on which form (alpha or beta) of the gap junction is present. This gene encodes one of the connexin proteins. Mutations in this gene have been found in some forms of deafness and in some families with hidrotic ectodermal dysplasia. [provided by RefSeq, Jul 2008]

**Product images:**



Circular map for RG225347