

## Product datasheet for **RG225314**

### RIL (PDLIM4) (NM\_001131027) Human Tagged ORF Clone

#### Product data:

Product Type:	Expression Plasmids
Product Name:	RIL (PDLIM4) (NM_001131027) Human Tagged ORF Clone
Tag:	TurboGFP
Symbol:	RIL
Synonyms:	RIL
Mammalian Cell Selection:	Neomycin
Vector:	pCMV6-AC-GFP (PS100010)
E. coli Selection:	Ampicillin (100 ug/mL)
ORF Nucleotide Sequence:	>RG225314 representing NM_001131027 Red=Cloning site Blue=ORF Green=Tags(s)

TTTGTAAATACGACTCACTATAGGGCGGCCGGAATTCGTCGACTGGATCCGGTACCGAGGAGATCTGCC  
GCC**CGATCGCC**

ATGCCCATTCGGTGACCTGCGCGGGCCTTCGCCCTGGGGCTTCGCCTGGTGGGCGGCCGGGACTTCA  
GCGCGCCCCTACCATCTCACGGGTCCATGCTGGCAGCAAGGCTGCATTGGCTGCCCTGTGCCAGGAGA  
CCTGATCCAGGCCATCAATGGTGAGAGCACAGAGCTCATGACACACCTGGAGGCACAGAACCGCATCAAG  
GGCTGCCACGATCACCTCACACTGTCTGTGAGCAGGCCTGAGGGTAGGAGCTGGCCAGTGCCCTGATG  
ACAGCAAGGCTCAGGCACACAGGATCCACATCGATCCTGAGATCCAGGACGGCAGCCCAACAACCAGCAG  
GCGGCCCTCAGGCACCGGACTGGGCCAGAAGATGGCAGACCAAGCCTGGGATCTCCATATGGACAACCC  
CCTCGCTTTCCAGTCCCTCACAATGGCAGCAGCGAGGCCACCCTGCCAGCCAGATGAGCACCTGCATG  
TGTCTCACCCCCAGCGCTGACCCAGCCAGAGGCCTCCCGCGGAGCCGGGACTGCAGAGTCGACCTGGG  
CTCCGAGGTGTACAGGATGCTGCGGGAGCCAGCCAGCCGCTGGCCGCGGAGCCCAAGCAGTCAGGCTCC  
TTCCGCTACTTGAGGGCATGCTAGAGGCCGCGAGGGCGGGGCACCATCGTCAAGGCACGGGACAAGCT  
CTACCATCCGAGTGCTTCATGTGCAGTGACTGCGGCC

**ACGCGT**ACGCGGCCGCTCGAG - GFP Tag - GTTTAA


[View online »](#)

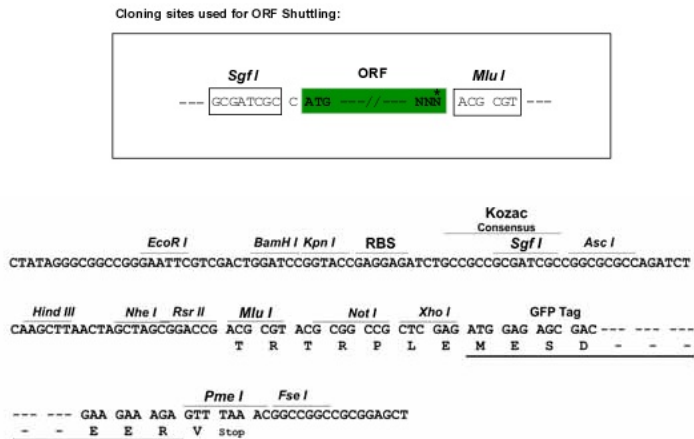
**Protein Sequence:** >RG225314 representing NM\_001131027  
 Red=Cloning site Green=Tags(s)

MPHSVTLRGPSPWGFRLVGGDFASPLTISR VHAGSKAALALCPGDLIQAINGESTELMTHLEAQNRIK  
 GCHDHLTLSVSRPEGRSWPSAPDDSKAQAHRIHIDPEIQDGSPTTSRRPSGTGTGPEDGRPSLGSPYQGP  
 PRFPVPHNGSSEATLPAQMSTLHVSPPPSADPARGLPRSRDCRVDLGSEVYRMLREPAEPVAAEPKQSGS  
 FRYLQGMLEAGEGGAPSSRHGTSSTIPSASCAVTAA

TRTRPLE – GFP Tag – V

**Restriction Sites:** SgfI-MluI

**Cloning Scheme:**



**ACCN:** NM\_001131027

**ORF Size:** 738 bp

**OTI Disclaimer:** The molecular sequence of this clone aligns with the gene accession number as a point of reference only. However, individual transcript sequences of the same gene can differ through naturally occurring variations (e.g. polymorphisms), each with its own valid existence. This clone is substantially in agreement with the reference, but a complete review of all prevailing variants is recommended prior to use. [More info](#)

**OTI Annotation:** This clone was engineered to express the complete ORF with an expression tag. Expression varies depending on the nature of the gene.

**Components:** The ORF clone is ion-exchange column purified and shipped in a 2D barcoded Matrix tube containing 10ug of transfection-ready, dried plasmid DNA (reconstitute with 100 ul of water).

**Reconstitution Method:**

1. Centrifuge at 5,000xg for 5min.
2. Carefully open the tube and add 100ul of sterile water to dissolve the DNA.
3. Close the tube and incubate for 10 minutes at room temperature.
4. Briefly vortex the tube and then do a quick spin (less than 5000xg) to concentrate the liquid at the bottom.
5. Store the suspended plasmid at -20°C. The DNA is stable for at least one year from date of shipping when stored at -20°C.

**RefSeq:** [NM\\_001131027.1](#), [NP\\_001124499.1](#)

**RefSeq Size:** 2189 bp

**RefSeq ORF:** 741 bp

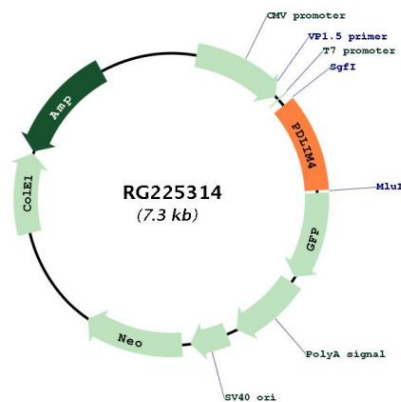
**Locus ID:** 8572

**UniProt ID:** [P50479](#)

**Cytogenetics:** 5q31.1

**Gene Summary:** This gene encodes a protein which may be involved in bone development. Mutations in this gene are associated with susceptibility to osteoporosis. [provided by RefSeq, Nov 2009]

## Product images:



Circular map for RG225314