

Product datasheet for RG225312

C1QC (NM_001114101) Human Tagged ORF Clone

Product data:

Product Type:	Expression Plasmids
Product Name:	C1QC (NM_001114101) Human Tagged ORF Clone
Tag:	TurboGFP
Symbol:	C1QC
Synonyms:	C1Q-C; C1QG
Mammalian Cell Selection:	Neomycin
Vector:	pCMV6-AC-GFP (PS100010)
E. coli Selection:	Ampicillin (100 ug/mL)
ORF Nucleotide Sequence:	>RG225312 representing NM_001114101 Red=Cloning site Blue=ORF Green=Tags(s)

TTTTGTAATACGACTCACTATAGGGCGGCCGGAATTCGTCGACTGGATCCGGTACCGAGGAGATCTGCC
GCC**CGATCGCC**

ATGGACGTGGGGCCAGCTCCCTGCCCCACCTTGGGCTGAAGCTGCTGCTGCTCCTGCTGCTGCTGCCCC
TCAGGGGCCAAGCCAACACAGGCTGCTACGGGATCCCAGGGATGCCCGCCTGCCGGGGCACCAGGGAA
GGATGGGTACGACGGACTGCCGGGGCCCAAGGGGAGCCAGGAATCCCAGCCATTCGCGGATCCGAGGA
CCCAAAGGGCAGAAGGGAGAACCCGGCTTACCCGGCCATCCTGGGAAAAATGGCCCATGGGACCCCTG
GGATGCCAGGGGTGCCCGCCCATGGGCATCCCTGGAGAGCCAGGTGAGGAGGGCAGATAACAAGCAGAA
ATTCCAGTCAGTGTTCACGGTCACTCGGCAGACCACCGCCCTGCACCAACAGCCTGATCAGATTC
AACCGGTCTCACAACCCGCAGGGAGATTATGACACGAGCACTGGCAAGTTCACCTGCAAAGTCCCCG
GCCTCTACTACTTTGTCTACCACGCTCGCATACAGCCAACCTGTGCGTGCTGCTGTACCGCAGCGGCGT
CAAAGTGGTCACCTTCTGTGGCCACAGTCCAAAACCAATCAGGTCAACTCGGGCGGTGTGCTGCTGAGG
TTGAGGTGGGCGAGGAGGTGTGGCTGGCTGTCAATGACTACTACGACATGGTGGGCATCCAGGGCTCTG
ACAGCGTCTTCTCCGGCTTCTGCTCTTCCCCGAC

AGCGGACCGACGCGTACGGCCGCTCGAG - GFP Tag - GTTTAA



[View online >](#)

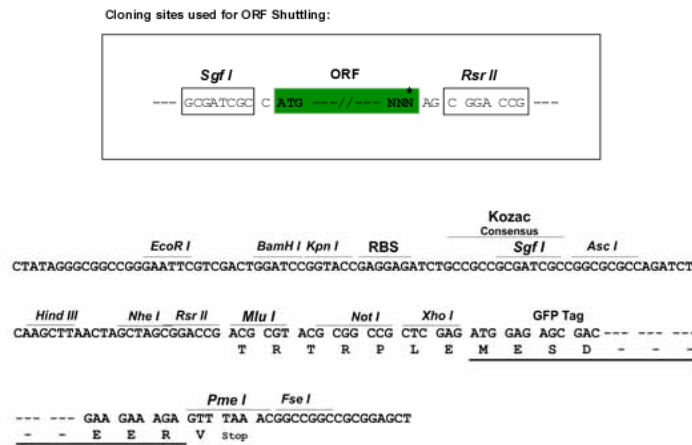
Protein Sequence: >RG225312 representing NM_001114101
 Red=Cloning site Green=Tags(s)

MDVGPSSLPHLGLKLLLLLLLLPLRGQANTGCYGIPIGMPGLPGAPGKDGVDGLPGPKGEPGIPAIPGIRG
 PKGQKGEPLPGHPGKNGPMGPPGMPGVPMPGIPGEPGEEGRYKQKFQSVFTVTRQTHQPPAPNSLIRF
 NAVLTNPQGDYDTSTGKFTCKVPLYYFVYHASHTANLCVLLYRSGVKVVTFCGHTSKTNQVNSGGVLLR
 LQVGEEVWLA VNDYYDMVGIQGS DSVFSGFLLPD

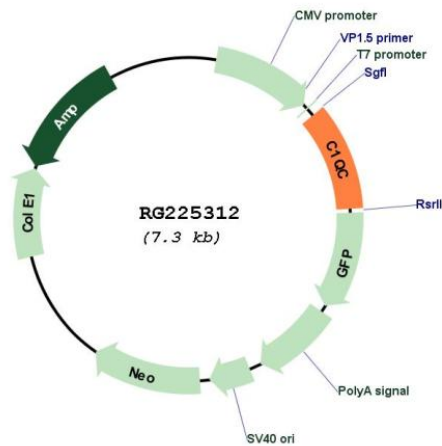
SGPTRRRLE - GFP Tag - V

Restriction Sites: SgfI-RsrII

Cloning Scheme:



Plasmid Map:



ACCN: NM_001114101

ORF Size: 735 bp

OTI Disclaimer:	The molecular sequence of this clone aligns with the gene accession number as a point of reference only. However, individual transcript sequences of the same gene can differ through naturally occurring variations (e.g. polymorphisms), each with its own valid existence. This clone is substantially in agreement with the reference, but a complete review of all prevailing variants is recommended prior to use. More info
OTI Annotation:	This clone was engineered to express the complete ORF with an expression tag. Expression varies depending on the nature of the gene.
Components:	The ORF clone is ion-exchange column purified and shipped in a 2D barcoded Matrix tube containing 10ug of transfection-ready, dried plasmid DNA (reconstitute with 100 ul of water).
Reconstitution Method:	<ol style="list-style-type: none">1. Centrifuge at 5,000xg for 5min.2. Carefully open the tube and add 100ul of sterile water to dissolve the DNA.3. Close the tube and incubate for 10 minutes at room temperature.4. Briefly vortex the tube and then do a quick spin (less than 5000xg) to concentrate the liquid at the bottom.5. Store the suspended plasmid at -20°C. The DNA is stable for at least one year from date of shipping when stored at -20°C.
RefSeq:	NM_001114101.3
RefSeq Size:	1205 bp
RefSeq ORF:	738 bp
Locus ID:	714
UniProt ID:	P02747
Cytogenetics:	1p36.12
Protein Families:	Secreted Protein
Protein Pathways:	Complement and coagulation cascades, Prion diseases, Systemic lupus erythematosus
Gene Summary:	This gene encodes the C-chain polypeptide of serum complement subcomponent C1q, which associates with C1r and C1s to yield the first component of the serum complement system. C1q is composed of 18 polypeptide chains which include 6 A-chains, 6 B-chains, and 6 C-chains. Each chain contains an N-terminal collagen-like region and a C-terminal C1q globular domain. C1q deficiency is associated with lupus erythematosus and glomerulonephritis. [provided by RefSeq, Dec 2016]