

Product datasheet for **RG225297**

KCTD6 (NM_001128214) Human Tagged ORF Clone

Product data:

Product Type: Expression Plasmids
Product Name: KCTD6 (NM_001128214) Human Tagged ORF Clone
Tag: TurboGFP
Symbol: KCTD6
Synonyms: KCASH3
Mammalian Cell Selection: Neomycin
Vector: pCMV6-AC-GFP (PS100010)
E. coli Selection: Ampicillin (100 ug/mL)
ORF Nucleotide Sequence: >RG225297 representing NM_001128214
Red=Cloning site Blue=ORF Green=Tags(s)

TTTTGTAATACGACTCACTATAGGGCGGCCGGAATTCGTCGACTGGATCCGGTACCGAGGAGATCTGCC
GCC**CGATCGCC**

ATGGATAATGGAGACTGGGGCTATATGATGACTGACCCAGTCACATTAATGTAGGTGGACACTTGTATA
CAACGCTCTCACCACATTGACGCGTTACCCGGATTCCATGCTTGGAGCTATGTTTGGGGGGGACTTCCC
CACAGCTCGAGACCCTCAAGGCAATTACTTTATTGATCGAGATGGACCTTTTTCCGATATGTCCTCAAC
TTCTTAAGAACTCAGAATTGACCTTACCGTTGGATTTAAGGAATTTGATCTGCTTCGAAAGAAGCAG
ATTTTTACCAGATTGAGCCCTTGATTCACTGTCCTCAATGATCCTAAGCCTTTGTATCCCATGGATACTTT
TGAAGAAGTTGTGGAGCTGTCTAGTACTCGGAAGCTTTCTAAGTACTCCAACCCAGTGGCTGTCATCATA
ACGCAACTAACCATCACCCTAAGGTCCATTCTTACTAGAAGGCATCTCAAATTTTTACCAAGTGGA
ATAAGCACATGATGGACACCAGAGACTGCCAGGTTTCTTTACTTTTGGACCCTGTGATTATCACCAGGA
AGTTTTCTTTAGGGTCCACCTGATGGAATACATTACAAAACAAGGTTTCACGATCCGCAACCCGGGTG
CATCACATGAGTGAGCGGGCCAATGAAAACACAGTGGAGCACAACCTGGACTTTCTGTAGGCTAGCCCGGA
AGACAGACGAC

AG**CGGACCG**ACGCGTACGCGGCCGCTCGAG - GFP Tag - GTTTAA



[View online »](#)

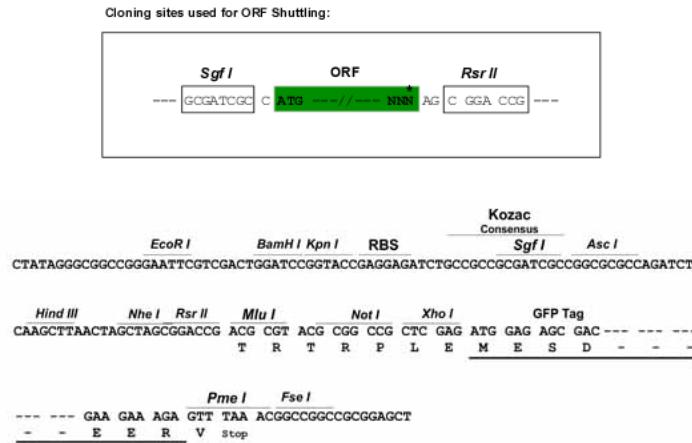
Protein Sequence: >RG225297 representing NM_001128214
 Red=Cloning site Green=Tags(s)

MDNGDWGYMMTDPVTLNVGGHLYTTSLLTTRYPD SMLGAMFGGDFPTARDPQGNFYIDRDGPLFRYVLN
 FLRTSELTLPLDFKEFDLLRKEADFYQIEPLIQCLNDPKPLYPMDTFEEVVELSSTRKLSKYSNPVAVII
 TQLTITTKVHSLLEGISNYFTKWNKHMMDTRDCQVSFTFGPCDYHQEVSRLRVHLM EYITKQGFTIRNTRV
 HHMSERANENTVEHNWTFCLARKTDD

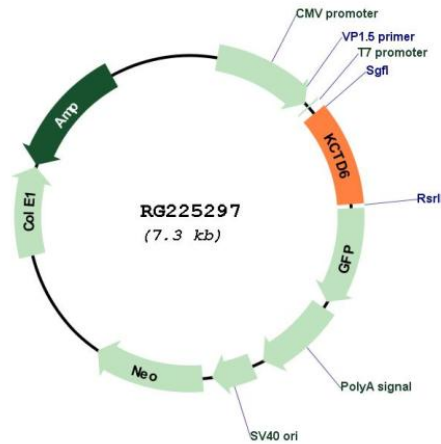
SGPTRRRLE - GFP Tag - V

Restriction Sites: SgfI-RsrII

Cloning Scheme:



Plasmid Map:



ACCN: NM_001128214

ORF Size: 711 bp

OTI Disclaimer:	The molecular sequence of this clone aligns with the gene accession number as a point of reference only. However, individual transcript sequences of the same gene can differ through naturally occurring variations (e.g. polymorphisms), each with its own valid existence. This clone is substantially in agreement with the reference, but a complete review of all prevailing variants is recommended prior to use. More info
OTI Annotation:	This clone was engineered to express the complete ORF with an expression tag. Expression varies depending on the nature of the gene.
Components:	The ORF clone is ion-exchange column purified and shipped in a 2D barcoded Matrix tube containing 10ug of transfection-ready, dried plasmid DNA (reconstitute with 100 ul of water).
Reconstitution Method:	<ol style="list-style-type: none">1. Centrifuge at 5,000xg for 5min.2. Carefully open the tube and add 100ul of sterile water to dissolve the DNA.3. Close the tube and incubate for 10 minutes at room temperature.4. Briefly vortex the tube and then do a quick spin (less than 5000xg) to concentrate the liquid at the bottom.5. Store the suspended plasmid at -20°C. The DNA is stable for at least one year from date of shipping when stored at -20°C.
RefSeq:	NM_001128214.2
RefSeq Size:	1566 bp
RefSeq ORF:	714 bp
Locus ID:	200845
UniProt ID:	Q8NC69
Cytogenetics:	3p14.3
Protein Families:	Ion Channels: Other
Gene Summary:	Probable substrate-specific adapter of a BCR (BTB-CUL3-RBX1) E3 ubiquitin-protein ligase complex mediating the ubiquitination and subsequent proteasomal degradation of target proteins. Promotes the ubiquitination of HDAC1; the function seems to depend on KCTD11:KCTD6 oligomerization. Can function as antagonist of the Hedgehog pathway by affecting the nuclear transfer of transcription factor GLI1; the function probably occurs via HDAC1 down-regulation, keeping GLI1 acetylated and inactive. Inhibits cell growth and tumorigenicity of medulloblastoma (MDB) (PubMed:21472142). Involved in regulating protein levels of ANK1 isoform Mu17 probably implicating CUL3-dependent proteasomal degradation (PubMed:22573887).[UniProtKB/Swiss-Prot Function]