

## Product datasheet for **RG225259**

### MFAP3 (NM\_001135037) Human Tagged ORF Clone

#### Product data:

**Product Type:** Expression Plasmids  
**Product Name:** MFAP3 (NM\_001135037) Human Tagged ORF Clone  
**Tag:** TurboGFP  
**Symbol:** MFAP3  
**Mammalian Cell Selection:** Neomycin  
**Vector:** pCMV6-AC-GFP (PS100010)  
**E. coli Selection:** Ampicillin (100 ug/mL)  
**ORF Nucleotide Sequence:** >RG225259 representing NM\_001135037  
Red=Cloning site Blue=ORF Green=Tags(s)

TTTTGTAATACGACTCACTATAGGGCGGCCGGAATTCGTCGACTGGATCCGGTACCGAGGAGATCTGCC  
GCC**CGCATCGCC**

ATGAGTGTCTATTACATGATTGTTTGCCTGATTGCCTTTACAATCACACTCATCTTGAATGTCACACGGC  
TGTGCATGATGAGCAGCCATCTTCGAAGACTGAGAAGGCTATCAATGAGTTCTTTAGAAGTGAAGGGGC  
TGAGAACTTCAGAAGGCCTTTGAGATTGCAAAACGTATCCCCATCATTACCTCAGCCAAAAGTCTGGAG  
CTCGCCAAAGTCACACAATTTAAGACCATGGAGTTTGTCTCGTTATATTGAAGAACTGGCAAGAAGTGTCC  
CTCTTCCACCTCTTATTCTAAACTGTCGAGCCTTTGTTGAGGAGATGTTTGAGGCTGTGCGAGTGGACGA  
CCCTGATGACCTGGGTAAAGAATTAAGAGAGAGACCTGCCTTGAATGCTCAAGGTGGCATCTATGTCATT  
AACCCAGAGATGGGACGGAGTAATTCACCAGGAGGAGATTCAGATGATGGCTCTCTGAATGAACAAGGCC  
AGGAAATAGCAGTTCAGGTTTCTGTCCACCTTCAGTCAGAAACCAAAAGTATTGATACAGAGTCTCAAGG  
CAGCAGTCATTTAGTCCACCTGATGATATAGGATCTGCAGAATCTAACTGTAACATAAAGATGGGGCA  
TATGAAAAGTGTGAGCTG

**ACGCGTACGCGGCCGCTCGAG** - GFP Tag - GTTTAA

**Protein Sequence:** >RG225259 representing NM\_001135037  
Red=Cloning site Green=Tags(s)

MSVYYMIVCLIAFTITLILNVTRL CMMSSHLRKTEKAIN EFFRTEGAEKLQKAFEIAKRIPITSAKLE  
LAKVTQFKTMEFARYIEELARSVPLPLILNCRAFVEEMFEAVRVDDPDDLGERIKERPALNAQGGIYVI  
NP EMGRSNSPGGSDDGSLNEQQQEIAVQVSVHLQSETKSIDTESQGSSHFSPDDIGSAESNCNYKDGA  
YENCQL

**TRTRPLE** - GFP Tag - V

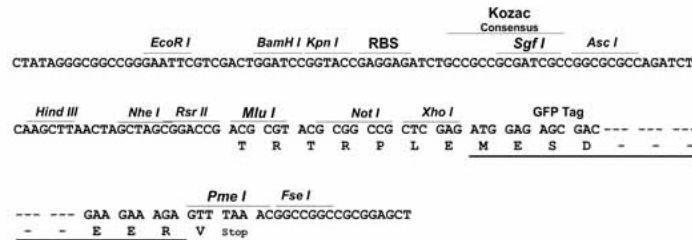
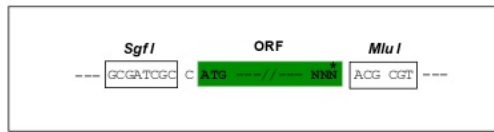


[View online »](#)

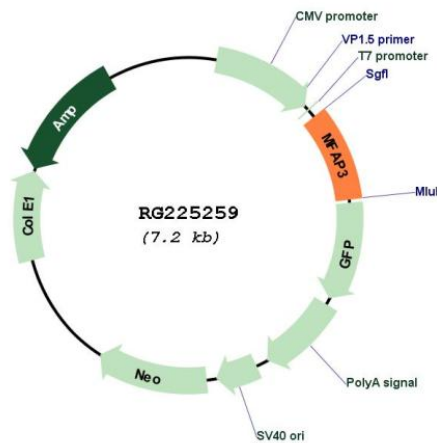
Restriction Sites: SgfI-MluI

Cloning Scheme:

Cloning sites used for ORF Shuttling:



Plasmid Map:



ACCN: NM\_001135037

ORF Size: 648 bp

OTI Disclaimer: The molecular sequence of this clone aligns with the gene accession number as a point of reference only. However, individual transcript sequences of the same gene can differ through naturally occurring variations (e.g. polymorphisms), each with its own valid existence. This clone is substantially in agreement with the reference, but a complete review of all prevailing variants is recommended prior to use. [More info](#)

OTI Annotation: This clone was engineered to express the complete ORF with an expression tag. Expression varies depending on the nature of the gene.

<b>Components:</b>	The ORF clone is ion-exchange column purified and shipped in a 2D barcoded Matrix tube containing 10ug of transfection-ready, dried plasmid DNA (reconstitute with 100 ul of water).
<b>Reconstitution Method:</b>	<ol style="list-style-type: none"><li>1. Centrifuge at 5,000xg for 5min.</li><li>2. Carefully open the tube and add 100ul of sterile water to dissolve the DNA.</li><li>3. Close the tube and incubate for 10 minutes at room temperature.</li><li>4. Briefly vortex the tube and then do a quick spin (less than 5000xg) to concentrate the liquid at the bottom.</li><li>5. Store the suspended plasmid at -20°C. The DNA is stable for at least one year from date of shipping when stored at -20°C.</li></ol>
<b>RefSeq:</b>	<u>NM_001135037.2</u>
<b>RefSeq Size:</b>	4588 bp
<b>RefSeq ORF:</b>	651 bp
<b>Locus ID:</b>	4238
<b>UniProt ID:</b>	<u>P55082</u>
<b>Cytogenetics:</b>	5q33.2
<b>Protein Families:</b>	Transmembrane
<b>Gene Summary:</b>	Component of the elastin-associated microfibrils.[UniProtKB/Swiss-Prot Function]