

Product datasheet for **RG225202**

p21 Ras (HRAS) (NM_001130442) Human Tagged ORF Clone

Product data:

Product Type: Expression Plasmids
Product Name: p21 Ras (HRAS) (NM_001130442) Human Tagged ORF Clone
Tag: TurboGFP
Symbol: p21 Ras
Synonyms: C-BAS/HAS; C-H-RAS; C-HA-RAS1; CTLO; H-RASIDX; HAMS; HRAS1; p21ras; RASH1
Mammalian Cell Selection: Neomycin
Vector: pCMV6-AC-GFP (PS100010)
E. coli Selection: Ampicillin (100 ug/mL)
ORF Nucleotide Sequence: >RG225202 representing NM_001130442
Red=Cloning site Blue=ORF Green=Tags(s)

TTTTGTAATACGACTCACTATAGGGCGGCCGGAATTCGTCGACTGGATCCGGTACCGAGGAGATCTGCC
GCC**CGATCGCC**

ATGACGGAATATAAGCTGGTGGTGGTGGGCGCCGGTGTGGGCAAGAGTGGCTGACCATCCAGCTGA
TCCAGAACCATTTTGTGGACGAATACGACCCCACTATAGAGGATTCCTACCGGAAGCAGGTGGTCATTGA
TGGGGAGACGTGCCTGTTGGACATCCTGGATACCGCCGGCAGGAGGAGTACAGCGCCATGCGGGACCAG
TACATGCGCACCGGGGAGGGCTTCTGTGTGTGTTGCCATCAACAACACCAAGTCTTTGAGGACATCC
ACCAGTACAGGGAGCAGATCAAACGGGTGAAGGACTCGGATGACGTGCCATGGTCTGGTGGGGAACAA
GTGTGACCTGGCTGCACGCACTGTGGAATCTCGGCAGGCTCAGGACCTCGCCGAAGCTACGGCATCCCC
TACATCGAGACCTCGGCCAAGACCCGGCAGGGAGTGGAGGATGCCTTCTACACGTTGGTGCCTGAGATCC
GGCAGCACAAGCTGCGGAAGCTGAACCCTCCTGATGAGAGTGGCCCCGGCTGCATGAGCTGCAAGTGTGT
GCTCTCC

ACGCGTACGCGGCCGCTCGAG - GFP Tag - GTTTAA

Protein Sequence: >RG225202 representing NM_001130442
Red=Cloning site Green=Tags(s)

MTEYKLVVVGAGGVGKSALTIQLIQNHFVDEYDPTIEDSYRKQVVIDGETCLLDILDITAGQEEYSAMRDQ
YMRTGEGFLCVFAINNTKSFEDIHQYREIQKRVKSDSDVPMVLVGNKCDLAARTVESRQAQDLARSYGIP
YIETSAKTRQGVEDAFYTLVREIRQHKLRKLNPPDESGPGCMSCKCVLS

TRTRPLE - GFP Tag - V

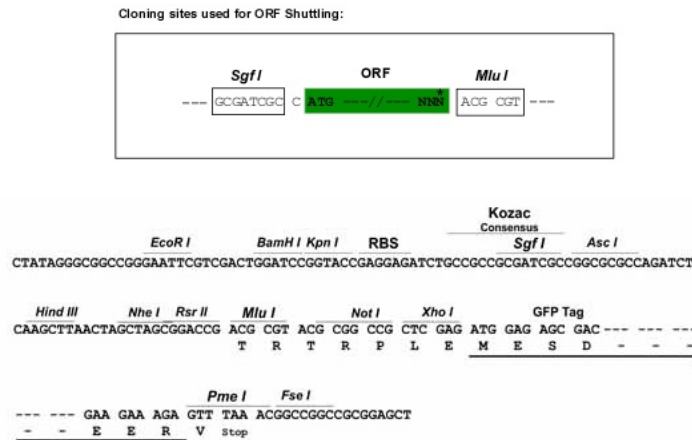
Chromatograms: https://cdn.origene.com/chromatograms/ja1991_e10.zip



[View online »](#)

Restriction Sites: Sgfl-MluI

Cloning Scheme:



ACCN: NM_001130442

ORF Size: 567 bp

OTI Disclaimer: Due to the inherent nature of this plasmid, standard methods to replicate additional amounts of DNA in E. coli are highly likely to result in mutations and/or rearrangements. Therefore, OriGene does not guarantee the capability to replicate this plasmid DNA. Additional amounts of DNA can be purchased from OriGene with batch-specific, full-sequence verification at a reduced cost. Please contact our customer care team at custsupport@origene.com or by calling 301.340.3188 option 3 for pricing and delivery.

The molecular sequence of this clone aligns with the gene accession number as a point of reference only. However, individual transcript sequences of the same gene can differ through naturally occurring variations (e.g. polymorphisms), each with its own valid existence. This clone is substantially in agreement with the reference, but a complete review of all prevailing variants is recommended prior to use. [More info](#)

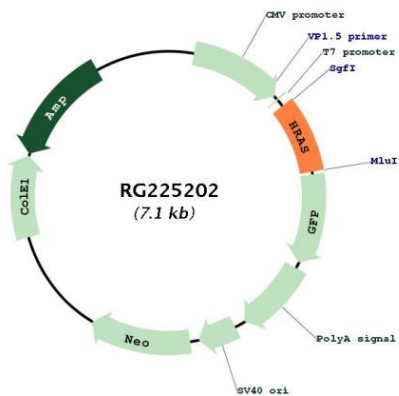
OTI Annotation: This clone was engineered to express the complete ORF with an expression tag. Expression varies depending on the nature of the gene.

Components: The ORF clone is ion-exchange column purified and shipped in a 2D barcoded Matrix tube containing 10ug of transfection-ready, dried plasmid DNA (reconstitute with 100 ul of water).

- Reconstitution Method:
1. Centrifuge at 5,000xg for 5min.
 2. Carefully open the tube and add 100ul of sterile water to dissolve the DNA.
 3. Close the tube and incubate for 10 minutes at room temperature.
 4. Briefly vortex the tube and then do a quick spin (less than 5000xg) to concentrate the liquid at the bottom.
 5. Store the suspended plasmid at -20°C. The DNA is stable for at least one year from date of shipping when stored at -20°C.

RefSeq:	NM_001130442.2 , NP_001123914.1
RefSeq Size:	1169 bp
RefSeq ORF:	570 bp
Locus ID:	3265
UniProt ID:	P01112
Cytogenetics:	11p15.5
Protein Families:	Druggable Genome
Protein Pathways:	Acute myeloid leukemia, Axon guidance, B cell receptor signaling pathway, Bladder cancer, Chemokine signaling pathway, Chronic myeloid leukemia, Endocytosis, Endometrial cancer, ErbB signaling pathway, Fc epsilon RI signaling pathway, Focal adhesion, Gap junction, Glioma, GnRH signaling pathway, Insulin signaling pathway, Long-term depression, Long-term potentiation, MAPK signaling pathway, Melanogenesis, Melanoma, Natural killer cell mediated cytotoxicity, Neurotrophin signaling pathway, Non-small cell lung cancer, Pathways in cancer, Prostate cancer, Regulation of actin cytoskeleton, Renal cell carcinoma, T cell receptor signaling pathway, Thyroid cancer, Tight junction, VEGF signaling pathway
Gene Summary:	<p>This gene belongs to the Ras oncogene family, whose members are related to the transforming genes of mammalian sarcoma retroviruses. The products encoded by these genes function in signal transduction pathways. These proteins can bind GTP and GDP, and they have intrinsic GTPase activity. This protein undergoes a continuous cycle of de- and re-palmitoylation, which regulates its rapid exchange between the plasma membrane and the Golgi apparatus. Mutations in this gene cause Costello syndrome, a disease characterized by increased growth at the prenatal stage, growth deficiency at the postnatal stage, predisposition to tumor formation, cognitive disability, skin and musculoskeletal abnormalities, distinctive facial appearance and cardiovascular abnormalities. Defects in this gene are implicated in a variety of cancers, including bladder cancer, follicular thyroid cancer, and oral squamous cell carcinoma. Multiple transcript variants, which encode different isoforms, have been identified for this gene. [provided by RefSeq, Jul 2008]</p>

Product images:



Circular map for RG225202