

Product datasheet for **RG225141**

RBP1 (NM_001130992) Human Tagged ORF Clone

Product data:

Product Type: Expression Plasmids
Product Name: RBP1 (NM_001130992) Human Tagged ORF Clone
Tag: TurboGFP
Symbol: RBP1
Synonyms: CRABP-I; CRBP; CRBP1; CRBPI; RBPC
Mammalian Cell Selection: Neomycin
Vector: pCMV6-AC-GFP (PS100010)
E. coli Selection: Ampicillin (100 ug/mL)
ORF Nucleotide Sequence: >RG225141 representing NM_001130992
 Red=Cloning site Blue=ORF Green=Tags(s)

TTTTGTAATACGACTCACTATAGGGCGGCCGGAATTCGTCGACTGGATCCGGTACCGAGGAGATCTGCC
 GCC**CGATCGCC**

ATGGATCTCCCGCAGGCTTTGTGCGCGTGGGAATCCAGCTGTCGCCGCCCGCAGAGCCCCTGTCCC
 CGGAGGGCGCTCATTTCCGGGCCGCCACCACCCGCTAGCACCGGCAGCCGCTGTCCCGGCAGTCTCCA
 GCCGTCCCGCCGCTTGTGGCAACTGGCTCCAGTCACTCCCGAAATGCCAGTCGACTTACTGGGTAC
 TGAAGATGTTGGTCAACGAGAATTCGAGGAGTACCTGCGGCCCTCGACGTCATGTGGCCTTGGCA
 AAATCGCCAATTGCTGAAGCCAGACAAAGAGATCGTGCAGGACGGTGACCATATGATCATCCGCACGCT
 GAGCACTTTTAGGAACATCATGGAATTCCAGGTTGGGAAGGAGTTTGAGGAGGATCTGACAGGCATA
 GATGACCGCAAGTGATGGCTGGAGTGAATCGCGTGATCTCAGCTCACTG

ACGCGTACGCGGCCGCTCGAG - GFP Tag - GTTTAA

Protein Sequence: >RG225141 representing NM_001130992
 Red=Cloning site Green=Tags(s)

MDPPAGFVRAGNPAAVAPQSPLSPEGAHFRAAHHPRSTGSRCPGSLQPSRPLVANWLQSLPEMPVDFGTG
 WKMLVNENFEEYLRALDVNVALRKIANLLKPDKEIVQDGDHMIIRTLSTFRNYIMDFQVGKEFEEDLTGI
 DDRKCMAGVQSRDLSSL

TRTRPLE - GFP Tag - V

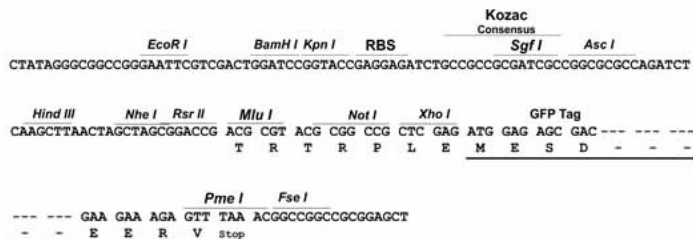
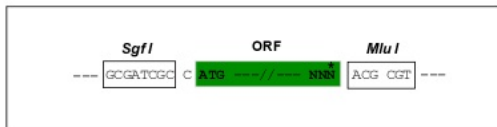
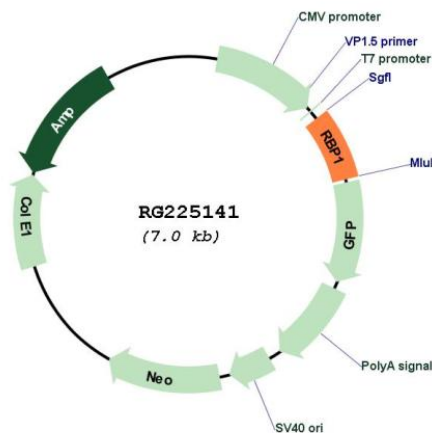
Restriction Sites: SgfI-MluI



[View online »](#)

Cloning Scheme:

Cloning sites used for ORF Shutting:


Plasmid Map:


- ACCN:** NM_001130992
ORF Size: 471 bp
OTI Disclaimer: The molecular sequence of this clone aligns with the gene accession number as a point of reference only. However, individual transcript sequences of the same gene can differ through naturally occurring variations (e.g. polymorphisms), each with its own valid existence. This clone is substantially in agreement with the reference, but a complete review of all prevailing variants is recommended prior to use. [More info](#)
OTI Annotation: This clone was engineered to express the complete ORF with an expression tag. Expression varies depending on the nature of the gene.

Components:	The ORF clone is ion-exchange column purified and shipped in a 2D barcoded Matrix tube containing 10ug of transfection-ready, dried plasmid DNA (reconstitute with 100 ul of water).
Reconstitution Method:	<ol style="list-style-type: none">1. Centrifuge at 5,000xg for 5min.2. Carefully open the tube and add 100ul of sterile water to dissolve the DNA.3. Close the tube and incubate for 10 minutes at room temperature.4. Briefly vortex the tube and then do a quick spin (less than 5000xg) to concentrate the liquid at the bottom.5. Store the suspended plasmid at -20°C. The DNA is stable for at least one year from date of shipping when stored at -20°C.
RefSeq:	<u>NM_001130992.2</u>
RefSeq Size:	1487 bp
RefSeq ORF:	474 bp
Locus ID:	5947
UniProt ID:	<u>P09455</u>
Cytogenetics:	3q23
Gene Summary:	This gene encodes the carrier protein involved in the transport of retinol (vitamin A alcohol) from the liver storage site to peripheral tissue. Vitamin A is a fat-soluble vitamin necessary for growth, reproduction, differentiation of epithelial tissues, and vision. Multiple transcript variants encoding different isoforms have been found for this gene. [provided by RefSeq, Aug 2008]