

Product datasheet for **RG224987**

MTLRP (GHRL) (NM_001134946) Human Tagged ORF Clone

Product data:

Product Type: Expression Plasmids
Product Name: MTLRP (GHRL) (NM_001134946) Human Tagged ORF Clone
Tag: TurboGFP
Symbol: GHRL
Synonyms: MTLRP
Mammalian Cell Selection: Neomycin
Vector: pCMV6-AC-GFP (PS100010)
E. coli Selection: Ampicillin (100 ug/mL)
ORF Nucleotide Sequence: >RG224987 representing NM_001134946
Red=Cloning site Blue=ORF Green=Tags(s)

TTTTGTAATACGACTCACTATAGGGCGGCCGGAATTCGTCGACTGGATCCGGTACCGAGGAGATCTGCC
GCC**CGATCGCC**

ATGTTTACTTGCTGGTGGTCTTATCTAAGATCAACATTGGCAGCTGTGCCGGAGAGGCCTCCAGGGTCC
AGTTCAACGCCCCCTTTGATGTTGGAATCAAGCTGTCAGGGGTTCACTACCAGCAGCACAGCCAGGCCCT
GGGAAGTTTCTTCAGGACATCCTCTGGGAAGAGGCCAAAGAGGCCCCAGCCGACAAG

ACGCGTACGCGGCCGCTCGAG - GFP Tag - GTTTAA

Protein Sequence: >RG224987 representing NM_001134946
Red=Cloning site Green=Tags(s)

MFTCWWSYLRSTLAAVPGEASRVQFNAPFDVGIKLSGVQYQQHSQALGKFLQDILWEEAKEAPADK

TRTRPLE - GFP Tag - V

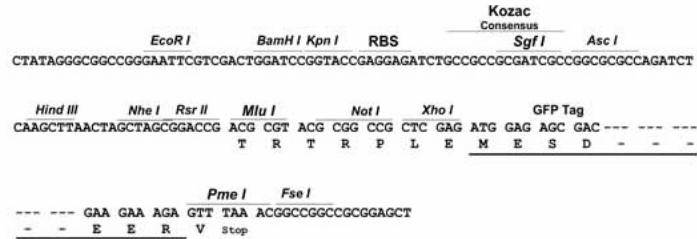
Restriction Sites: Sgfl-Mlul



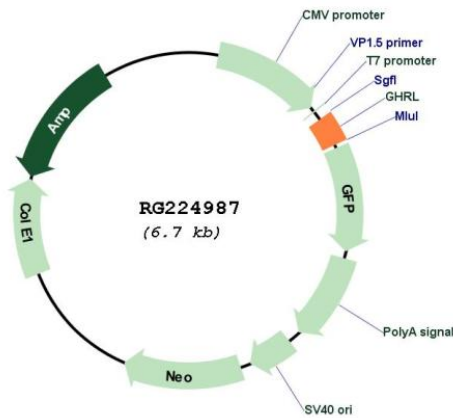
[View online »](#)

Cloning Scheme:

Cloning sites used for ORF Shutting:



Plasmid Map:



ACCN: NM_001134946

ORF Size: 198 bp

OTI Disclaimer:	The molecular sequence of this clone aligns with the gene accession number as a point of reference only. However, individual transcript sequences of the same gene can differ through naturally occurring variations (e.g. polymorphisms), each with its own valid existence. This clone is substantially in agreement with the reference, but a complete review of all prevailing variants is recommended prior to use. More info
OTI Annotation:	This clone was engineered to express the complete ORF with an expression tag. Expression varies depending on the nature of the gene.
Components:	The ORF clone is ion-exchange column purified and shipped in a 2D barcoded Matrix tube containing 10ug of transfection-ready, dried plasmid DNA (reconstitute with 100 ul of water).
Reconstitution Method:	<ol style="list-style-type: none">1. Centrifuge at 5,000xg for 5min.2. Carefully open the tube and add 100ul of sterile water to dissolve the DNA.3. Close the tube and incubate for 10 minutes at room temperature.4. Briefly vortex the tube and then do a quick spin (less than 5000xg) to concentrate the liquid at the bottom.5. Store the suspended plasmid at -20°C. The DNA is stable for at least one year from date of shipping when stored at -20°C.
RefSeq:	NM_001134946.2
RefSeq Size:	384 bp
RefSeq ORF:	201 bp
Locus ID:	51738
UniProt ID:	Q9UBU3
Cytogenetics:	3p25.3
Protein Families:	Druggable Genome, Secreted Protein, Transmembrane
Gene Summary:	This gene encodes the ghrelin-obestatin preproprotein that is cleaved to yield two peptides, ghrelin and obestatin. Ghrelin is a powerful appetite stimulant and plays an important role in energy homeostasis. Its secretion is initiated when the stomach is empty, whereupon it binds to the growth hormone secretagogue receptor in the hypothalamus which results in the secretion of growth hormone (somatotropin). Ghrelin is thought to regulate multiple activities, including hunger, reward perception via the mesolimbic pathway, gastric acid secretion, gastrointestinal motility, and pancreatic glucose-stimulated insulin secretion. It was initially proposed that obestatin plays an opposing role to ghrelin by promoting satiety and thus decreasing food intake, but this action is still debated. Recent reports suggest multiple metabolic roles for obestatin, including regulating adipocyte function and glucose metabolism. Alternative splicing results in multiple transcript variants. In addition, antisense transcripts for this gene have been identified and may potentially regulate ghrelin-obestatin preproprotein expression. [provided by RefSeq, Nov 2014]