

## Product datasheet for **RG224976**

### USP17L2 (NM\_201402) Human Tagged ORF Clone

#### Product data:

Product Type:	Expression Plasmids
Product Name:	USP17L2 (NM_201402) Human Tagged ORF Clone
Tag:	TurboGFP
Symbol:	USP17L2
Synonyms:	DUB-3; DUB3; USP17
Mammalian Cell Selection:	Neomycin
Vector:	pCMV6-AC-GFP (PS100010)
E. coli Selection:	Ampicillin (100 ug/mL)



[View online »](#)

**ORF Nucleotide Sequence:**

>RG224976 representing NM\_201402  
 Red=Cloning site Blue=ORF Green=Tags(s)

TTTTGTAATACGACTCACTATAGGGCGGCCGGAATTCGTCGACTGGATCCGGTACCGAGGAGATCTGCC  
 GCC**CGGATCGCC**

ATGGAGGACGACTCACTCTACTTGGGAGGTGAGTGGCAGTTCAACCCTTTTCAAACTCACATCTTCTC  
 GGCCAGATGCAGCTTTTCTGAAATCCAGCGGACTTCTCTCCCTGAGAAGTCACCACTCTCATCTGAGGC  
 CCGTGTGACCTCTGTGATGATTTGGCTCCTGTGGCAAGACAGCTTGTCCCAGGGAGAAGCTTCTCTGT  
 AGTAGCAGGAGACCTGCTGCGGTGGGGCTGGGCTCCAGAATATGGGAAATACCTGCTACGAGAAGCCTT  
 CCCTGCAGTGCCTGACATACACACCGCCCTTGCCTCACTACATGCTGTCCGGGAGCACTCTCAAACATG  
 TCAGCGTCCCAAGTGTGCATGCTGTACTATGCAAGCTCACATCACATGGGCCCTCCACAGTCTGGT  
 CATGTCATCCAGCCCTCACAGGCATTGGCTGCTGGCTTCCATAGAGGCAAGCAGGAAGATGCCCATGAAT  
 TTCTCATGTTCACTGTGGATGCCATGAAAAGGCATGCCCTCCCGCCACAAGCAGGTAGATCATCACTC  
 TAAGGACACCACCCTCATCCACCAAATATTTGGAGGCTGCTGGAGATCTCAAATCAAGTGTCTCCACTGC  
 CACGGGATTCCAGACACTTTTGACCCTTACCTGGACATCGCCCTGGATATCCAGGAGCTCAGAGTGCA  
 AGCAAGCTTTGGAACAGTTGGTGAAGCCGAAGAACTCAATGGAGAGAATGCCTATCATTGTGGTCTTTG  
 TCTCCAGAGGGCGCCGGCCTCCAAGACGTTAACTTTACACACTTCTGCCAAGGTCTCATCTTGTMTTG  
 AAGAGATTCTCCGATGTCACAGGCAACAACTTGCCAAGAATGTGCAATATCCTGAGTGCCTTGACATGC  
 AGCCATACATGCTCAGCAGAACACAGGACCTCTTGTCTATGTCTCTATGCTGTGCTGGTCCACGCTGG  
 GTGGAGTTGTACAACGGACATTACTTCTTTATGTCAAAGCTCAAGAAGGCCAGTGGTATAAAATGGAT  
 GATGCCGAGGTCACCGCCTTAGCATCACTTCTGTCTGAGTCAACAGGCCTACGCTCTTTTACATCC  
 AGAAGAGTGAATGGAAAGACACAGTGAAGTGTGCAAGAGGCAGGGAACCAAGACCCCTTGGCGCAGA  
 AGACACAGACAGCGAGCAACGCAAGGAGAGCTCAAGAGAGACCACCCCTGCCTCCAGGCCCGGAGTTG  
 GACGAGCACTTGGTGGAAAGAGCCACTCAGGAAAGCACCTTAGACCACTGGAAATTCCTTCAAGAGCAAA  
 ACAAAAACGAAGCCTGAGTTCAACGTGAGAAAAGTGAAGGTACCTGCCTCCCGACGTACTTGTGATTCA  
 TCAATCAAAATACAAGTGTGGGATGAAGAACCATCATCTGAACAGCAAAGCTCCCTGCTAAACCTCTCT  
 TCGACGACCCCGACATCAGGAGTCCATGAACACTGGCACACTCGTTCCTGCGAGGGAGGGCCAGGA  
 GATCCAAAGGGAAGAACAACACAGCAAGAGGGCTCTGCTGTGTGCCAG

**ACGCGTACGCGGCCGCTCGAG** – GFP Tag – GTTTAA

**Protein Sequence:**

>RG224976 representing NM\_201402  
 Red=Cloning site Green=Tags(s)

MEDDSL YLGG EWQFNHFSKLTSSRPDAFAEIQR TSLPEKSPLSSEARVDLCDD LAPVARQLAPREKLPL  
 SRRRPAAVGAGLQNMGNTCYENASLQCLTYTPPLANYMLSREHSQTCQRPKCCMLCTMQAHITWALHSPG  
 HVIQPSQALAAGFHRGKQEDAHEFLMFTVDAMKKA CLPGHKQVDHHSKDTTLIHQIFGGCWRSQIKCLHC  
 HGIPDTFDPYLDIALDIQAAQSVKQALEQLVKPEELNGENAYHCG LCLQRAPASKTLTLHTSAKVLILXL  
 KRFS DVTGNKLAKNVQYPECLDMQPYMSQQNTGPLYVYVLYAVLVHAGWSCHNGHYFSYVKAQEGQWYKMD  
 DAEVTASSITSVLSQQAYVLFYIQKSEWERHSESVSRGREPRALGAEDTDRRATQGELKRDHPCLQAPEL  
 DEHLVERATQESTLDHWKFLQE QNKTKEPFNVKVEGTLPPDVLVIHQSKYKCGMKNHHPEQQSSLLNLS  
 STTPTHQESMNTGLASLRGRARRSKGKNKHSKRALLVCQ

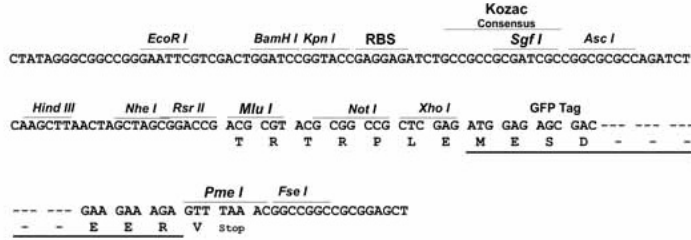
**TRTRPLE** – GFP Tag – V

**Restriction Sites:**

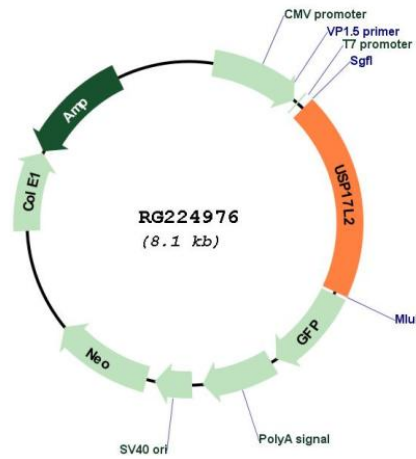
Sgfl-Mlul

**Cloning Scheme:**

Cloning sites used for ORF Shutting:



**Plasmid Map:**



<b>ACCN:</b>	NM_201402
<b>ORF Size:</b>	1590 bp
<b>OTI Disclaimer:</b>	The molecular sequence of this clone aligns with the gene accession number as a point of reference only. However, individual transcript sequences of the same gene can differ through naturally occurring variations (e.g. polymorphisms), each with its own valid existence. This clone is substantially in agreement with the reference, but a complete review of all prevailing variants is recommended prior to use. <a href="#">More info</a>
<b>OTI Annotation:</b>	This clone was engineered to express the complete ORF with an expression tag. Expression varies depending on the nature of the gene.
<b>Components:</b>	The ORF clone is ion-exchange column purified and shipped in a 2D barcoded Matrix tube containing 10ug of transfection-ready, dried plasmid DNA (reconstitute with 100 ul of water).
<b>Reconstitution Method:</b>	<ol style="list-style-type: none"><li>1. Centrifuge at 5,000xg for 5min.</li><li>2. Carefully open the tube and add 100ul of sterile water to dissolve the DNA.</li><li>3. Close the tube and incubate for 10 minutes at room temperature.</li><li>4. Briefly vortex the tube and then do a quick spin (less than 5000xg) to concentrate the liquid at the bottom.</li><li>5. Store the suspended plasmid at -20°C. The DNA is stable for at least one year from date of shipping when stored at -20°C.</li></ol>
<b>RefSeq:</b>	<a href="#">NM_201402.1</a> , <a href="#">NP_958804.1</a>
<b>RefSeq Size:</b>	1593 bp
<b>RefSeq ORF:</b>	1593 bp
<b>Locus ID:</b>	377630
<b>UniProt ID:</b>	<a href="#">Q6R6M4</a>
<b>Cytogenetics:</b>	8p23.1
<b>Gene Summary:</b>	DUB3 is a member of the ubiquitin processing protease (UBP) subfamily of deubiquitinating enzymes. See USP1 (MIM 603478) for background information.[supplied by OMIM, Mar 2008]