

## Product datasheet for **RG224969**

### Sialoadhesin (SIGLEC1) (NM\_023068) Human Tagged ORF Clone

#### Product data:

Product Type:	Expression Plasmids
Product Name:	Sialoadhesin (SIGLEC1) (NM_023068) Human Tagged ORF Clone
Tag:	TurboGFP
Symbol:	Sialoadhesin
Synonyms:	CD169; SIGLEC-1; SN
Mammalian Cell Selection:	Neomycin
Vector:	pCMV6-AC-GFP (PS100010)
E. coli Selection:	Ampicillin (100 ug/mL)
ORF Nucleotide Sequence:	>RG224969 representing NM_023068 Red=Cloning site Blue=ORF Green=Tags(s)

CTATAGGGCGCCGGAATTTCGTGCGACTGGATCCGGTACCGAGGAGATCTGCC  
GCC**CGATCGCC**

ATGGGCTTCTTGCCCAAGCTTCTCCTCCTGGCCTCATTCTTCCAGCAGGCCAGGCCTCATGGGCGTCT  
CCAGTCCCAGGACGTGCAGGGTGTGAAGGGTCTTGCCTGCTTATCCCCTGCATCTTCAGTTCCTCTGC  
CGAGCTGGAGGTGCCGACGGCATCACGGCCATCTGGTACTACGACTACTCGGGCCAGCGGAGGTGGT  
AGCCACTCGGCGAACCCCAAGCTGGTGGAGGCCGCTTCCGCGGCCGACCGAGTTCATGGGAACCCCG  
AGCACAGGGTGTCAACCTGCTGCTGAAGGACCTGCAGCCGAGGACTCTGGTTCCTACAACCTCCGCTT  
CGAGATCAGTGAGGTCAACCGCTGGTCAAGTGTGAAAGGCACCTTGGTCAAGTAAACAGAGGAGCCAGG  
GTGCCACCATTGCTCCCGGTGGAGCTTCTCGAGGGCACAGAGGTGGACTTCAACTGCTCCACTCCCT  
ACGTATGCCTGCAGGAGCAGGTCAAGTGCAGTGGCAAGGCCAGGACCCTGCTCGCTCTGTACCTTCAA  
CAGCCAGAAGTTTGAGCCACCGCGCTCGGCCACCTGGAGACCCTCCACATGGCCATGCTCTGGCAGGAC  
CACGGCCGGATCCTGCGTGCAGCTCTCCGTGGCCAATCACAGGGCTCAGAGCGAGATTCACCTCCAAG  
TGAAGTATGCCCAAGGGTGTGAAGATCCTCCTCAGCCCCTCGGGGAGGAACATCCTTCCAGGTGAGCT  
GGTCACTCACCTGCCAGGTGAACAGCAGCTACCCTGCAGTCAAGTCCATTAAGTGGCTCAAGGATGGG  
GTACGCTCCAAACCAAGACTGGTGTGCTGCACCTGCCAGGCAGCCTGGAGCGATGCTGGCGTCTACA  
CCTGCCAAGCTGAGAACGGCGTGGGCTCTTTGGTCTCACCCCCATCAGCCTCCACATCTTCATGGCTGA  
GGTCCAGGTGAGCCAGCAGGTCCATCCTGGAGAACCAGACAGTGAAGTGTGCAACACACCCAAT  
GAGGCACCAGTGATCTCCGCTACAGCTGGTACAAGAACCATGCTCTGCTGGAGGATGCCACTCCATA  
CCCTCCGGCTGCACTTGGCCACTAGGGCTGATACTGGCTTCTACTTCTGTGAGGTGCAGAACGTCCATGG  
CAGCGAGCGCTCGGGCCCTGTCAGCGTGGTGTCAACCACCCGCTCTCACTCCAGTCTGACAGCCTTC  
CTGGAGACCCAGGCGGACTTGTGGCATCCTTCACTGCTCTGTGGTCAAGTCAAGCCCTGGCCACTGG  
TGCTGTACATGGGGTCAATCCTGGCTCCACTCCGGGGACAGTGATCACAGCCACGCTTCAGTGG  
TACCTCTGGTCCAACTCCCTGCGCTGGAGATCCGAGACCTGGAGGAACTGACAGTGGGGAGTACAAG



[View online >](#)

TGCTCAGCCACCAACTCCCTTGAAATGCAACCTCCACCCTGGACTTCCATGCCAATGCCGCCGTCTCC  
 TCATCAGCCCGGCAGCCGAGGTGGTGAAGGACAGGCAGTGACTGAGCTGCAGAAGCGGCCTAAGCCC  
 CACACCTGATGCCCGCTTCTCCTGGTACCTGAATGGAGCCTGCTTACGAGGGTCCCGGCAGCAGCCTC  
 CTGCTCCCGCGGCTCCAGCACTGACGCCGGCTCATACCACTGCCGGGCCCGGGACGGCCACAGTGCCA  
 GTGGCCCTCTTCGCCAGCTGTTCTCACTGTGCTTACCCCTCGACAACCAACATTACCACCAGGCT  
 GGACCTTGATGCCGTGGGGCCGGGCTGGACGGCGAGGCCTCTTTGTGCCGTGTGGACAGCGACCCC  
 CCCCGAGGCTGCAGCTGCCACAAGGACCGTGTGTGGCCACTTCCCTGCCATCAGGGGGTGGTGCA  
 GCACCTGTGGGGCTGTTCCCCACGCATGAAGGTACCAAAGCCCAACTTGTGCGTGTGGAGATTCA  
 CAACCTTTGCTGGAAGAGGAGGCTTGTACCTCTGTGAGGCCAGCAATGCCCTGGGCAACGCCTCCACC  
 TCAGCCACCTTAATGGCCAGGCCACTGTCTGGCCATTGCACCATCACACACTTCAGGAGGGCAGAG  
 AAGCCAACTTGACTTGCAACGTGAGCCGGGAAGCTGCTGGCAGCCCTGCTAACTTCTCCTGGTCCGAAA  
 TGGGGTGTGTGGGCCAGGGTCCCTGGAGACCGTGACTGCTGCCCGTGGCCAGAAGTATGCTGCC  
 CTTTACGCCTGCCGATCCTGACTGAGGCTGGTCCCAGCTTCCACTCCCGTGTCTGAGTGTACTCT  
 ATCCCCGGACCGTCAAAGCTGTAGCCCTCCTAGACATGGGCCAGGGCCACATGGCTCTGTTTATCTG  
 CACTGTGGACAGCCGCCCTGGCCTTGTGGCCTTGTCCATGGGGAGCACCTCTGGCCACCAGCCTG  
 GGTCCCCAGGTCCCATCCATGGTCCGTTCCAGGCTAAAGCTGAGGCCAACTCCCTGAAGTTAGAGGTCC  
 GAGAACTGGGCCTTGGGACTCTGGCAGCTACCGCTGTGAGGCCACAAATGTTCTTGATCATCCAACAC  
 CTACTCTTCTCCAGGTCCGAGGAGCCTGGGTCCAGGTGTACCATCACCTGAGCTCCAAGAGGGCCAG  
 GCTGTGGTCTGAGCTGCCAGGTACACACAGGAGTCCCAGAGGGGACCTCATATCGTTGGTATCGGGATG  
 GCCAGCCCTCCAGGAGTGCACCTCGGCCACGCTCCGCTTTCAGCCATAACTTTGACACAAGCTGGGGC  
 CTATATTGCCAAGCCAGGCCAGGCTCAGCCACCAGAGCCTAGCTGCACCCATCAGCCTCCACGTG  
 TCCTATGCCCCACGCCACGTCACTACTACCCTGATGGACACAGGCCCTGGACGACTGGCCCTCTCC  
 TGTGCCGTGTGGACAGTACCCTCCGGCCAGCTGCGGCTGCTCCACGGGGATCGCCTTGTGGCCTCCAC  
 CCTACAAGGTGTGGGGGACCCGAAGGCAGCTCTCCAGGCTGCATGTGGCTGTGGCCCCCAACACTG  
 CGTCTGGAGATCCACGGGCTATGCTGGAGGATGAGGGTGTCTATATCTGTGAGGCCTCCAACCCCTGG  
 GCCAGGCCTCGGCCTCAGCTGACTTCGACGCTCAAGCTGTGAATGTGCAGGTGTGGCCCGGGGCTACCGT  
 GCGGGAGGGGAGCTGGTGAACCTGACCTGCCTTGTGTGGACCACTACCCCGGCCAGCTCACCTACACA  
 TGGTACCAGGATGGGCAGCAGCGCTGGATGCCCACTCCATCCCCCTGCCAACGTACAGTCAGGGATG  
 CCACCTCTACCCTGCGGTGTGGGCCCCCTGGTCCGGCACCCCGCCTCTCCAGACCTATCACCTTGA  
 CGTCTCTACGCGCCCGCAACCTGCGCCTGACCTACCTCTGGAGGCCATGGCGGGCAGCTGGCCCTG  
 TACTGTGCACTGTGGACAGCCGCCCGCCAGCTGGCCCTCAGCCACGCCGGTGCCTCTTGGCCT  
 CCTCGACAGCAGCCTCTGTCCCCAACACCTGCGCCTGGAGCTGCGAGGGCCACAGCCCAGGGATGAGGG  
 TTTCTACAGCTGCTCTGCCCGCAGCCCTCTGGGCCAGGCCAACACGTCCCTGGAGCTGCGGCTGGAGGGT  
 GTGCGGGTGTATCCTGGTCCGGAGGCTGCCGTGCCTGAAGGTGCCCCATCACAGTGACCTGTGCGGACC  
 CTGCTGCCACGCACCCACACTATACTTGGTACCACAACGGTCCGTGGCTGCAGGAGGGTCCAGCTGC  
 CTCACTCTATTCTGGTGGCCACGCGGGCTCATGCAGGCGCCTACTCTTGCAGGCCAGGATGCCAG  
 GGCACCCGAGCTCCCGTCTGCTGCCCTGCAAGTCTCTATGCCCTCAGGACGCTGTCTGTCTCTCT  
 TCCGGGACTCCAGGGCCAGATCCATGGCTGTGATACAGTGCAGTGTGGACAGTGGCCACCTGCTGAGCT  
 GGCCCTATCTCATGATGGCAAGGTGCTGGCCACGAGCAGCGGGTCCACAGCTTGGCATCAGGGACAGGC  
 CATGTCCAGGTGGCCGAAACGCCCTACGGCTGCAGGTGCAAGATGTCCCTGCAGGTGATGACACCTATG  
 TTTGCACAGCCAAACTTGTGGGCTCAATCAGCACCATCGGGCGGTTGCAGGTAGAAGGTGCACGCGT  
 GGTGGCAGAGCCTGGCCTGGACGTGCCTGAGGGCGCTGCCCTGAACCTCAGCTGCCCGCTCTGGGTGGC  
 CCTGGGCTGTGGGCAACTCCACCTTTCATGTTCTGGAATGACCGGGGCTGCACGGGAGCCTGTGC  
 CCACTCTGCCTTACCCACGTGGCTCGTGTCTCAAGCTGGGATGTACCACTGCCTGGCTGAGCTCCCCAC  
 TGGGGTGTGCTGCTCCAGTATGCTCCGTGTGCTTACCCTCCAAAGACGCCACCATGATGGTC  
 TTCGTGGAGCCTGAGGGTGGCTCCGGGCATCCTGGATTGCCGAGTGGACAGCGAGCCGCTCGCCAGCC  
 TGACTCTCCACCTTGGCAGTCGACTGGTGGCTCCAGTCAGCCCAGGGTCTCTGCAGAGCCACACAT  
 CCATGTCTGGCTTCCCCAATGCCCTGAGGGTGGACATCGAGGGCTGAGGCCACAGCAAGGGGAA  
 TACATCTGTTCTGCCTCAAATGTCTGGGCTCTGCCTTACCTCCACCTACTTTGGGGTACAGCCCTGC  
 ACCGCCTGCATCAGTTCAGCAGCTGCTCTGGGTCTGGGACTGCTGGTGGGCTCTGCTCCTGCTGTT  
 GGGCTGGGGCTGCTACACCTGGAGAAGGAGGCGTGTTTGTAAGCAGAGCATGGGCGAGAATTCGGTG  
 GAGATGGCTTTTCAGAAAGAGACCACGCAGCTCATTGATCCTGATGCAGCCACATGTGAGACCTCAACT

GTGCCCCACCCCTGGGC

CTCGAG – GFP Tag – GTTTAA

**Protein Sequence:**

>RG224969 representing NM\_023068

Red=Cloning site Green=Tags(s)

MGFLPKLLLLASFFPAGQASWGVSSPQDVQGVKGSCLLIPCIFSFADVEVPDGITAIWYYDYSGQRQVV  
SHSADPKLVEARFRGRTEFMGNPEHRVCNLLKDLQPEDSGSYNFRFEI SEVNRWSDVKGLTVTVEEPR  
VPTIASPVEL

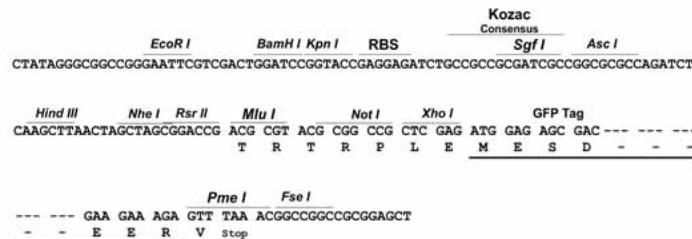
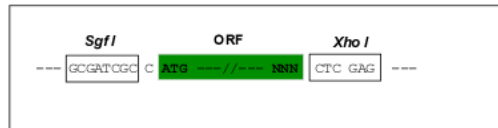
LE – GFP Tag – V

**Restriction Sites:**

Sgfl-XhoI

**Cloning Scheme:**

Cloning sites used for ORF Shuttling:



**ACCN:**

NM\_023068

**ORF Size:**

5127 bp

**OTI Disclaimer:**

Due to the inherent nature of this plasmid, standard methods to replicate additional amounts of DNA in E. coli are highly likely to result in mutations and/or rearrangements. Therefore, OriGene does not guarantee the capability to replicate this plasmid DNA. Additional amounts of DNA can be purchased from OriGene with batch-specific, full-sequence verification at a reduced cost. Please contact our customer care team at [custsupport@origene.com](mailto:custsupport@origene.com) or by calling 301.340.3188 option 3 for pricing and delivery.

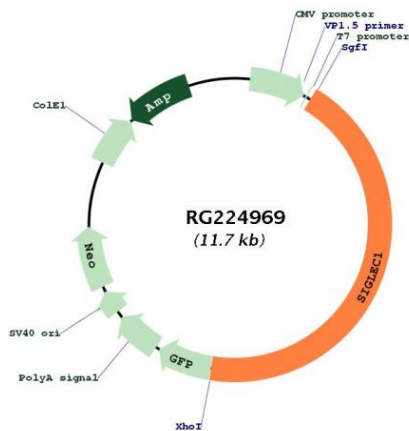
The molecular sequence of this clone aligns with the gene accession number as a point of reference only. However, individual transcript sequences of the same gene can differ through naturally occurring variations (e.g. polymorphisms), each with its own valid existence. This clone is substantially in agreement with the reference, but a complete review of all prevailing variants is recommended prior to use. [More info](#)

**OTI Annotation:**

This clone was engineered to express the complete ORF with an expression tag. Expression varies depending on the nature of the gene.

<b>Components:</b>	The ORF clone is ion-exchange column purified and shipped in a 2D barcoded Matrix tube containing 10ug of transfection-ready, dried plasmid DNA (reconstitute with 100 ul of water).
<b>Reconstitution Method:</b>	<ol style="list-style-type: none"> <li>1. Centrifuge at 5,000xg for 5min.</li> <li>2. Carefully open the tube and add 100ul of sterile water to dissolve the DNA.</li> <li>3. Close the tube and incubate for 10 minutes at room temperature.</li> <li>4. Briefly vortex the tube and then do a quick spin (less than 5000xg) to concentrate the liquid at the bottom.</li> <li>5. Store the suspended plasmid at -20°C. The DNA is stable for at least one year from date of shipping when stored at -20°C.</li> </ol>
<b>RefSeq:</b>	<u><a href="#">NM_023068.4</a></u>
<b>RefSeq Size:</b>	5130 bp
<b>RefSeq ORF:</b>	5130 bp
<b>Locus ID:</b>	6614
<b>UniProt ID:</b>	<u><a href="#">Q9BZZ2</a></u>
<b>Cytogenetics:</b>	20p13
<b>Protein Families:</b>	Transmembrane
<b>Protein Pathways:</b>	Cell adhesion molecules (CAMs)
<b>Gene Summary:</b>	This gene encodes a member of the immunoglobulin superfamily. The encoded protein is a lectin-like adhesion molecule that binds glycoconjugate ligands on cell surfaces in a sialic acid-dependent manner. It is a type I transmembrane protein expressed only by a subpopulation of macrophages and is involved in mediating cell-cell interactions. Alternative splicing produces a transcript variant encoding an isoform that is soluble rather than membrane-bound; however, the full-length nature of this variant has not been determined. [provided by RefSeq, Jul 2008]

### Product images:



Circular map for RG224969