

Product datasheet for **RG224956**

Insulin Receptor R (INSRR) (NM_014215) Human Tagged ORF Clone

Product data:

Product Type:	Expression Plasmids
Product Name:	Insulin Receptor R (INSRR) (NM_014215) Human Tagged ORF Clone
Tag:	TurboGFP
Symbol:	INSRR
Synonyms:	IRR
Mammalian Cell Selection:	Neomycin
Vector:	pCMV6-AC-GFP (PS100010)
E. coli Selection:	Ampicillin (100 ug/mL)
ORF Nucleotide Sequence:	>RG224956 representing NM_014215 Red=Cloning site Blue=ORF Green=Tags(s)

TTTTGTAATACGACTCACTATAGGGCGGCCGGAATTCGTCGACTGGATCCGGTACCGAGGAGATCTGCC
GCC**CGATCGCC**

ATGGCAGTGCCTAGTCTGTGGCCCTGGGGAGCATGCCTGCCTGTGATCTTCCTCTCCTTGGGATTTGGCC
TGGATACAGTAGAGGTGTGCCCCAGCCTGGATATTCGCTCAGAGGTGGCAGAGCTTCGTACAGCTGGAGAA
CTGCAGCGTGGTGGAGGGCCACCTGCAGATCCTGCTCATGTTACAGCCACCGGGGAGGACTTCCGCGGC
CTCAGCTTCCCTCGCCTACCCAGGTACCGACTACCTGCTGCTTCCGTGTCTACGGACTGGAGAGCC
TGGCGACCTCTCCCAACCTAGCAGTCATCCGCGGGACGCGCCTCTTCTGGGCTATGCACTGGTCAT
CTTTGAGATGCCACATCTGCGTGACGTGGCACTGCCTGCCTTGGGGCCGTGCTGCGTGGGGCTGTGCGT
GTGGAGAAGAACCAGGAGCTCTGCCACCTCTCCACATTGACTGGGGACTGCTGCAGCCAGCACCTGGCG
CCAACCACATCGTGGCAACAAGCTGGGCGAGGAGTGTGCTGACGTGTGCCCTGGTGTGCTGGGTGCTGC
TGGTGAGCCCTGTGCAAGACCCTTCAGCGGGCACACTGACTACAGATGCTGGACCTCCAGCCACTGC
CAGAGAGTGTGCCCTGCCCATGGGATGGCTTGACAGCGAGGGGCGAGTGTGCCACACCGAATGCC
TGGGGGCTGCAGCCAGCCAGAAGACCCTCGTGCCTGTGTAGCTTGGCCACCTCTACTCCAGGGTGC
CTGCCTGTGGGCTGCCCGCCAGGCACCTACCAGTATGAGTCTGGCGCTGTGTACAGCTGAGCGCTGT
GCCAGCTGCACCTGTGCCCCGGCGTGCCTCCACCTTCGCATACACCAGGGCAGTTGCCTGGCCAGT
GCCCTTCTGGCTTACCCTGTAATAGCAGCAGCATATTCTGCCACAAGTGCAGGGGCTGTGCCCTAAAGA
GTGCAAGGTAGGCACCAAGACCATCGACTCCATCCAGGCGGCACAGGATCTTGTGGGCTGCACGCATGTG
GAGGGAAGCCTCATCCTCAACCTTCGCCAGGGCTACAACCTGGAGCCACAGCTGCAGCACAGCCTGGGGC
TGGTAGAAACCTACTGGCTTCTCAAATCAAGCACTCCTTTGCCCTCGTGTCCCTGGGCTTTTTCAA
GAACCTCAAATAATCCGGGGAGACGCCATGGTGGATGGGAACTACACTCTCTACGTGCTGGACAACCG
AACCTACAACAGTAGGGTCTGGGTGGCCGGGGCTCACCATTCCCGTGGGAAGATCTACTTCGCT
TCAACCCGCGCTCTGCTTGAACACATCTACCGACTGGAGGAGGTGACAGGCACGCGAGGTGGCAGAA
CAAGGCTGAGATCAACCCCGCACCAACGGAGACCGCGCCGCTGCCAGACTCGCACCTGCGCTTCGTG



[View online »](#)

TCCAACGTGACGGAGGCAGACCCGATCCTGCTACGCTGGGAGCGCTATGAGCCACTGGAGGCCCGCGACC
 TGCTCAGCTTCATCGTGTACTACAAGGAGTCCCCATTCCAGAACGCCACAGAGCAGTGGGTCCAGATGC
 TTGTGGAACCCAGAGCTGGAACCTGCTGGATGTGGAGCTGCCCTAAGCCGCACCCAGGAGCCAGGGGTG
 ACCCTAGCCTCCCTCAAGCCTTGGACACAGTACGCAGTGTGGTGTGCGGGCCATCACGCTAACCCTGAGG
 AGGACAGCCCTCATCAAGGAGCCAGAGTCCCATCGTCTACCTCCGAACGCTGCCTGCAGCTCCCACGGT
 GCCCAAGACGTCATCTCCACGTCCAACCTCCTCCCACCTCCTGGTGCCTGGAAGCCACCCAGCCAG
 CGCAATGGGAACCTCACCTACTACCTGGTGTGTGGCAGCGGCTGGCAGAGGACGGCGACCTCTACCTCA
 ATGACTACTGCCACCGCGCTTGGCGGCTGCCACCAGCAACAACGATCCGCGCTTCGACGGCGAAGACGG
 GGATCCTGAGGCCGAGATGGAGTCCGACTGCTGCCCTTGCAGCACCCACCTCCTGGTACAGTTCTGCC
 CCGCTGGAGGCGCAAGAGGCTCGTTCCAGAAGAAGTTTGAAGTCTTACACAACCGCATCACCATCC
 CCATATCCCTTGGAAAGGTGACGTCCATCAACAAGAGCCCAAGGGACTCAGGGCGCACCCGCCGGGC
 AGCTGGGCCCCTCCGGCTGGGGGCAACAGCTCGGATTCGAGATCCAGGAGGACAAGGTGCCCGTGAG
 CGAGCGGTGCTGAGCGGCTGCGCCACTCACGGAATACCGGATCGACATCCATGCCTGCAACCACGCGG
 CGCACACCGTGGCTGCAGCGCCGCCACCTTCGTCTTTGCGCGCACCATGCCCCACAGAGAGGCTGATGG
 TATTCCAGGAAAGGTGGCTGGGAGGCCCCAGCAAGAACAGTGTCTTTGCGCTGGCTCGAGCCACCA
 GACCCCAACGGACTCATCTCAAGTACGAAATCAAGTACCGCGCTTGGGAGAGGAGGCCACAGTGTGT
 GTGTGTCCCGTCTTCGATATGCGAAGTTTGGGGGAGTCCACCTGGCCCTGCTGCCCCCTGAAAACACTC
 TGCCAGGGTTAGGGCAACCTCACTGGCTGGCAATGGCTCTTGGACAGACAGTGTTCCTTACATCCTT
 GGCCAGAGGAGGAGGATGCTGGGGGCTGCATGTCTCCTCACTGCCACCCCTGTGGGGCTCACGCTGC
 TCATCGTTCCTGCTGCCCTTGGTTTCTTACGGCAAGAAGAGAAAACAGAACCCCTGTATGCTTCTGTGAA
 TCCAGAGTACTTCAGCGCCTCTGATATGTATGTCCCTGATGAATGGGAGTGCCTCGGGAGCAGATCTCG
 ATAATCCGGAACTGGGCCAGGGCTCTTTGGGATGGTATATGAGGGCTGGCACGAGGACTTGAGGCTG
 GAGAGGAGTCCACACCCGTGGCCCTGAAGACGGTGAATGAGCTGGCCAGCCACGGGAATGCATTGAGTT
 CCTCAAGGAAGCTTCTGTCATGAAAGCCTTCAAGTGTACCATGTGGTGGTCTCCTGGGTGGTATCT
 CAGGGCCAGCAACTCTGGTATCATGGAGTAAATGACCCGTGGGGACCTCAAGAGCCATCTTCGATCTT
 TGCGGCTGAGGCAGAGAACAACCTGGGCTCCCACAGCCAGCATTGGGGGAAATGATCCAAATGGCTGG
 TGAGATTGCAGACGGCATGGCCTACCTTGTGCCAACAAGTTTGTGCACCGAGATCTAGCAGCCGCAAC
 TGCATGGTGTCCAGGACTTCACCGTCAAGATCGGGGACTTCGGGATGACTCGGGACGTGTATGAGACAG
 ACTATTACCGCAAGGGTGGGAAGGGGCTGCTGCCCGTGCCTGGATGGCCCCGAGTCCCTCAAAGATGG
 GATCTTACCACCCACTCGGATGTCTGGTCTTTGGCGTGGTACTCTGGGAGATTGTACCCTGGCAGAA
 CAACCCTACCAGGGCCTGTCCAATGAGCAGGTGCTGAAGTTCGTCATGGATGGCGGGTCTGGAGGAGC
 TGGAGGGCTGTCCCTTACGCTGCAGGAGCTGATGAGCCGCTGCTGGCAGCCGAACCCACGCTGCGCCC
 ATCTTTACACACATTCTGGACAGCATACAGGAGGAGCTGCGGCCCTCCTTCCGCCTCCTCTCCTTCTAC
 TACAGCCCGGAATGCCGGGGGGCCGGGGCTCCCTGCCTACCACCGATGCAGAGCCTGACTCCTCACCCA
 CTCGAAGAGACTGCAGCCCTCAAATGGGGTCCAGGGCAC

ACGCGTACGCGGGCCGCTCGAG – GFP Tag – GTTAA

Protein Sequence: >RG224956 representing NM_014215
 Red=Cloning site Green=Tags(s)

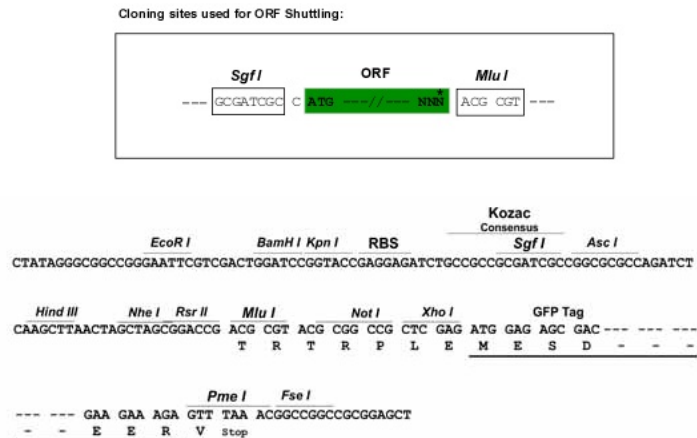
MAVPSLWPWGACLPVIFLSLGFGLDTVEVCPSLDIRSEVAELRQLENCVVEGHLQILLMFTATGEDFRG
 LSFPRLTQVTDYLLLFVYVGLESLRDLFNLAVIRGTRFLGYALVIFEMPHLRDVALPALGAVLRGAVR
 VEKNQELCHLSTIDWGLLQPAPGANHIVGNKLGEECADVCPGVLGAAGEPCAHTTFSGHTDYRCWTS
 SHCQRVPCPHGMACTARGECCHTECLGGCSQPEDPRACVACRHLVYFQGAACLVACPPGTQYESWRCV
 TAERCASLHVSVPGRASTFGIHQGSCLAQCPSGFRNSSSIFCHKCEGLCPKECKVGTKTIDSIQAAQD
 LVGCTHVEGSLILNLRQGYNLEPQLQHSGLVETITGFLKIKHSFALVSLGFFKNLKLIRGDAMVDGNY
 TYLVLDNQNLQQLGSWVAAGLTIPVGKIYFAFNPRCLLEHIYRLEEVTGTRGRQNKAEINPRTNGDRA
 ACQTRTLRFVSNVTEADRILLRWERYEPEARDLLSFIVYKESPFQNAEHVGPDACGTQSWNLLDVEL
 PLRTQEPGVTLASLKPWQYAVFVRAITLTTEEDSPHQGAQSPVYLRLTPAAPTVPQDVI
 STSNSSSHLLVRWKPTQTRNGNLTYLVLWQRLAEDGDLVNDYCHRGRLPTSNNDRPFDGEDGDPEA
 EMESDCCPCQHPGGVLPLEAEQASFKFENFLHNAITIPISPKVTSINKSPQRDSGRHRAAGPLRLGG
 NSSDFEIQEDKVPRERAVLSGLRHFTEYRIDIHACNHAHTVGC SAATVFVARTMPHREADGIPGKVA
 WEASSKNSVLLRWLEPPDPNGLILKYEIKYRRLGEEATVLCVSRRLRYAKFGGVHLALLPPGNYSAR
 VRATSLAGNGSWTDSVAFYILGPEEEDAGGLHVLLTATPVGLTLLIVLAALGFFYGGKRNRTLYASV
 NPEYFSASDMYVPDEWEVPREQISIRELGQGSFGMYVEGLARGLEAGEESTPVALKTVNELASPRE
 CIEFLKEASVMKAFKCHHVRLGQVVSQQGPTLVIMELMTRGDLKSHLRLRPEAENNPGLPQALG
 EMIQMAGEIADGMAYLAANKFVHRDLAARNCMVSDQDFTVKIGDFGMDRVYETDYRKGKGLLP
 VWRMAPESLKDGIFFTHSDVWSFGVVLWEIVTLAEQPYQGLSNEQVLKFMVMDGGVLEEL
 EGCLQLQELMSRCWQPNRLRPSFTHILDSIQEELRPSFRLLSFYSPFECRGARGSLPTTDAEPD
 SSPTPRDCSPQNGGPGH

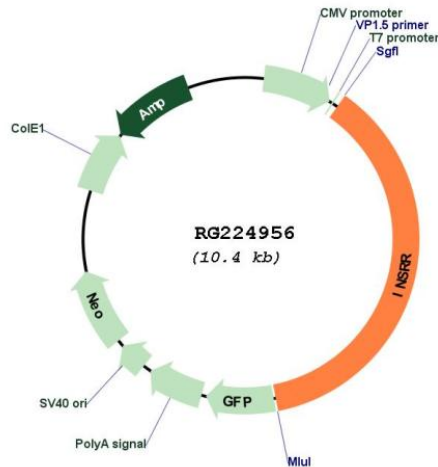
TRTRPLE - GFP Tag - V

Restriction Sites:

SgfI-MluI

Cloning Scheme:



Plasmid Map:


ACCN: NM_014215

ORF Size: 3891 bp

OTI Disclaimer: The molecular sequence of this clone aligns with the gene accession number as a point of reference only. However, individual transcript sequences of the same gene can differ through naturally occurring variations (e.g. polymorphisms), each with its own valid existence. This clone is substantially in agreement with the reference, but a complete review of all prevailing variants is recommended prior to use. [More info](#)

OTI Annotation: This clone was engineered to express the complete ORF with an expression tag. Expression varies depending on the nature of the gene.

Components: The ORF clone is ion-exchange column purified and shipped in a 2D barcoded Matrix tube containing 10ug of transfection-ready, dried plasmid DNA (reconstitute with 100 ul of water).

Reconstitution Method:

1. Centrifuge at 5,000xg for 5min.
2. Carefully open the tube and add 100ul of sterile water to dissolve the DNA.
3. Close the tube and incubate for 10 minutes at room temperature.
4. Briefly vortex the tube and then do a quick spin (less than 5000xg) to concentrate the liquid at the bottom.
5. Store the suspended plasmid at -20°C. The DNA is stable for at least one year from date of shipping when stored at -20°C.

RefSeq: [NM_014215.3](#)

RefSeq Size: 4148 bp

RefSeq ORF: 3894 bp

Locus ID: 3645

UniProt ID: [P14616](#)

Cytogenetics: 1q23.1

Protein Families:	Druggable Genome, Protein Kinase, Transmembrane
Protein Pathways:	Prostate cancer, Regulation of actin cytoskeleton
Gene Summary:	Receptor with tyrosine-protein kinase activity. Functions as a pH sensing receptor which is activated by increased extracellular pH. Activates an intracellular signaling pathway that involves IRS1 and AKT1/PKB.[UniProtKB/Swiss-Prot Function]