

Product datasheet for **RG224909**

XRN1 (NM_001042604) Human Tagged ORF Clone

Product data:

Product Type: Expression Plasmids
Product Name: XRN1 (NM_001042604) Human Tagged ORF Clone
Tag: TurboGFP
Symbol: XRN1
Synonyms: SEP1
Mammalian Cell Selection: Neomycin
Vector: pCMV6-AC-GFP (PS100010)
E. coli Selection: Ampicillin (100 ug/mL)
ORF Nucleotide Sequence: >RG224909 representing NM_001042604
Red=Cloning site Blue=ORF Green=Tags(s)

TTTTGTAATACGACTCACTATAGGGCGGCCGGAATTCGTCGACTGGATCCGGTACCGAGGAGATCTGCC
GCC**CGATCGCC**

ATGGGAGTCCCCAAGTTTTACAGATGGATCTCAGAGCGGTATCCCTGTCTCAGCGAAGTGGTAAAGAGC
ATCAGATTCCTGAATTTGACAACCTGTACCTGGATATGAATGGAATTATACATCAGTGCTCCCATCTAA
TGATGATGATGTTCACTTTAGAATTTAGATGATAAAAATCTTTACTGATATTTTTACTACCTGGAGGTG
TTGTTTCGCATTATTAACCCAGGAAAGTTCCTTTATGGCTGTAGATGGTGTGGCTCCTCGAGCAAAA
TGAAACCAGCAGCGTGGGAGGCGTTTTAGGTCAGCAAAGGAGGCAGAAGACAAAATTAAGGCAATAGA
GAAGGGAGAACTCTTCTACAGAGGCCAGATTTGATTCCAAGTATCACACCAGGAAGTGAATTTATG
GCCAGGTTACATGAACATCTGAAGTATTTGTAATATGAAAATTTCCACAGACAAGTATGCAAGGAG
TTACCATCTACTTCTCAGGCCATGAGACTCCTGGAGAAGGAGAGCATAAAATCATGGAATTTATCAGATC
CGAGAAAGCAAAGCCAGATCATGATCCAACACCAGACTGTCTTTATGGTTTAGATGCTGACTTGATT
ATGCTTGGATTAACAAGTCATGAGGCACATTTTCTCTCTTAAGAGAAGAAGTTCGATTTGGTGGCAAAA
AAACACAACGGGTATGTGCTCCAGAAGAACTACATTTCACTTCTACACTTGTCTTTAATGAGAGAGTA
TATTGACTATGAGTTTTAGATTTAAAAGAAAAGATCACATTTAAATATGATATTGAAAGGATAATAGAT
GATTGGATTTTGGTGGGTTTCTTGTGGTAATGATTTTATCCCTCATCTACCTCATTACATATTAATC
ATGATGCACTGCCTCTTCTTTATGGAACATATGTTACCATCCTGCCAGAAGTGGGGTTATATTAATGA
AAGTGGGCACCTCAACTTACCTCGATTTGAGAAATACCTGTGAAACTATCAGATTTTATCGGGAGCAC
TTCAGTGAAGTTTTGTGGACCTAAAATGGTTTAAAAGCAAAGTGGTAAACAAGTACCTCAATGAAGCAG
CAGGTGTCGAGCAGAAGAAGCCAGGAACAAGGAAAAGAAAAGTTAAAGGGCCAGGAAAATTTCTCT
GTGTTGGACTGCTTTAGACAAAATGAAGGCGAAATGATAACTTCTAAGGATAATTTAGAAGATGAGACT
GAAGATGATGACCTATTTGAAACTGAGTTTAGACAATATAAAGAACATATTACATGACGAAGATGGGG
TTGACGTAGTATCTGATGACTTTCTGGCTGATCAAGCTGCATGTTATGTTGAGGCAATACAGTGGATTT
GCACTATTACTATCATGGAGTTCAGTCTGGAGCTGGTATTATCCTTATCATTATGCACCTTTCTGCTCT



[View online »](#)

GATATACACAACATCAGTACACTCAAAATCCATTTTGAAGTAGGAAAACCTTTTAAAGCCATTTGAACAGC
TTCTTGCTGTAAGTCCAGCAGCCAGCAAAATTTACTTCTGCATGCTACCAGCATTGATGACCAATGA
AGACTACCAATTATAGAATATTACCCACCTGATTTTAAACTGACCTAAATGGGAAACAACAGGAATGG
GAAGCTGTGGTGTAAATCCCTTTTATTGATGAGAAGCGATTATTGGAAGCCATGGAGACATGTAACCACT
CCCTCAAAAAGGAAGAGAGGAAAAGAAACCAACATAGTGAGTGCCTAATGTGCTGGTATGATAGAGACAC
AGAGTTTATCTATCCTTCTCCATGGCCAGAAAAGTTCCCTGCCATAGAACGATGTTGACAAGGTATAAA
ATAATATCCTTAGATGCTTGGCGTGTAGACATAAACAAAAACAAAATAACCAAGATTTGACCAGAAAAGCAT
TATATTTCTGTGGATTTCTACTCTGAAACACATCAGACACAAAATTTTTTTTGAAGAAAAGTGGTGTCA
AGTATTCAGCAAAAGCAGTCGTGGAGAAAACATGATGTTGGAAATCTTAGTGGATGCAGAATCAGATGAA
CTTACCGTAGAAAATGTAGCTTCATCAGTGCTTGGAAAATCTGTCTTTGTTAATTGGCCTCACCTTGAGG
AAGCTAGAGTCGTGGCTGTATCAGATGGAGAACTAAGTTTTACTTGGAAAGAACCTCCAGGAACACAGAA
GCTTTTATCAGGAAGAACTGCCACCCTAAAGTGGTTCATCTTGGAGATAAAGAACAATCTAACTGG
GCAAAAAGAAAGTACAAGGAATTTCAAGAACTACCTGAGAAGAAAAGGAATAATAAATGAAACATCTG
CAGTTGTGTATGCTCAGTACTCACAGGTCGTAATATCAATAAATCAAAATGGTGAAGTTCGTCTAGA
GAAACAGTGGTCAAAACAAGTTGTCTTTTGTATCAAACTATTGTCAAGGACATCCGAGCTTTTCGAC
TCCCGTTTCTCCAATATCAAAACATTGGATGATTTGTTTCTCTGAGAAGTATGGTCTTTATGCTGGGAA
CTCCCTATTATGGCTGCACTGGAGAAGTTCAGGATTCAGGTGATGTGATTACAGAAGGTAGGATTCGTGT
GATTTTACGATTCATGTGAACCAATCTTGTGCTTTAATACAGAACCAGCATAAATATTCTATAAAG
TACAACCCAGGATATGTGTTGGCCAGTCGCTTGGAGTGAAGTGGATACCTTGTTCAGGTTTACAGGAA
GTATTTTATTGGAAGAGGATCTAGGAGAAACCCTCATGGAGACCATAAAGCAAAATGTGGGTTTAAATCT
CAAATTCACAAGAAAATGAGGAGGTACCTGGATATACTAAGAAAGTGGAAAGTGAATGGATGTATTCA
TCTGCCAGCAGAACAATCTTGGCAGAGTACTTAGAGAGAGCTCCAGAATTTAGTTATATAGCCAAAA
ATAGCCAAAGAGGATGTGTTCTATGAAGATGACATTTGGCCTGGAGAAAATGAGAATGGTGTGAAAAGT
TCAAGAAATTATTACTTGGCTAAAAGGACATCCTGTGACTTTTATCTGTTCTTCTGTGATTACAA
ATTCTGGATGCAGCTATTGTTGAGAAAATTGAGGAAGAAGTCAAGAAAGTCAAGCAAGAAAGAAATAATA
AGAAGGTGCGAGTAACAGTGAACCCCATTTGCTATACAGACCTTTAGAACAGCAACATGGAGTCATTCC
TGATCGGGATGCAGAATTTGTCTTTTACCCTGTTGTAATGTGAGAGAAAACCTCAGTTCAGTT
GGCCTTCGAGGCACCATCATAGGAATAAAAGGAGCTAATAGAGAAGCCGATGACTATTTGAAGTATTAT
TTGATGAAGAATTTCTGGAGGGTTAACAATAAGATGCTCACCTGGTAGAGGTTATCGACTGCCAACAG
TGCTTGGTGAACCTTTCTCATGGGAGTCGCTCTGAAACTGGAATCAGAAGTTGACAGCCATCGTAAAA
CCACAACCAGCTGTACATCAACATAGCTCAAGTTCATCAGTTTCTCTGGGCATTTGGGAGCCCTCAACC
ATTCCTCAATCACTTTTTGTTCTACTCAAGTACCTACTAAAGATGATGATGAATTCTGCAACATTTG
GCAGTCTTACAGGGATCTGGAAGATGCAATACTTTACGCCAATATAACAAGAGAAGGGTGCAGTTCTA
CCTCAAGAAAATAAGCCAAGTAAATCAACATCATAAATCTGGCTTTAATGACAACAGTGTAAATATCAGC
AAAGAAAACATGACCCTCACAGAAAATTTAAAGAAGAGTGAAGAGTCTAAAGCTGAGTGTGGTCCCA
AAAAATGTCCAATAAGCAGCCTAACTCTGGAAATGAGAATTTTTAGCATCTTTGAATATCTCCAAAGAA
AATGAAGTACAGTCATCTCATGTTGGGAGCCTCCAAGTGAAGAGCATTGTCCACACAGTCATTGGCA
TGGGAACACGGATGCTTAAAGAAATCTAAAAATGATGGCTCTAACACTGTGGACCATAAGAATGAAAT
CAACAGATTGCTAATGAAATCCCTGTTTCTCTAACAGAAGAGATGAATATGGATTACCCTCTCAGCCT
AAACAAAATAAGAAATTAGCATCTTATATGAACAAGCCTCACAGTGTAAATGAGTACCATAATGTTCAGT
CTATGGACAATATGTGTTGGCCTGCCCCAGCCAGATCCCTCCTGTATCCACACCAGTAACTGAACTTTC
TCGAATTTGTTCCCTTGTGGAATGCCACAACCTGATTTCTCTTTTCTTAGGATGCCACAGACAATGACC
GTTTGGCAAGTAAAATTAATAAGCTTACTGGTACATGGGCCACAGTCCACTCTGAAAATGAAGCCA
AAGAGAAAGCTGCACTTTTTGCTTTACAACAGTTGGGCTCCTTAGGCATGAATTTCCCTTTGCCTCACA
AGTATTTGCAAAATATCCTTCAGCTGTACCACCTGGAACCATTCTCCAGCCTTTCCCCACCTACTGCT
AATATAATGCCTTCGTCTCTCATCTTTGGCTCAATGCCATGGGACCATCGGTGCCAGTTCTGGGA
AGCCTTCCATCATACTTTATATTTGGGACCATGCCATGGCTGGGGGAATACCAGGGGTGTGCACAA
TCAGTTTATACCTCTGCAGGTTACTAAAAAAGGGTTGCAACAAAAAGAACTTTGAGAATAAGGAAGCC
CAGAGTTCTCAAGCCACTCCAGTTCAGACTAGCCAGCCAGATTCTTCAACATTGTCAAAGTAAAGTCCAC
GGGAGAGCTCATCAGTTCTTTGAAGTCTCTCCGATTGCTCAACCTGCATCTTCTTTTCAAGTTGAAAC
TGCTCTCAAGGCCATAGTATATCTCACCATAAGTCAACACCAATCTCTTCTTCAAGAAGAAAATCAAGA
AAACTGGCTGTTAATTTGGTGTCTTAAACCTTCTGAG

ACGCGTACGCGGCCGCTCGAG - GFP Tag - GTTTAA

Protein Sequence:

>RG224909 representing NM_001042604
 Red=Cloning site Green=Tags(s)

MGVPKFYRWISERYPCLSEVVKEHQIPEFDNLYLDMNGIIHQCSHPNDDDVHFRI SDDKIFTDIFHYLEV
 LFRI IKPRKVFVMAVDGVA PRAKMNQQRRRFRSAKEAEDKIKKAIEKGETLPTEARFDSNCITPGTEFM
 ARLHEHLKYFVNMKISTDKSWQGVTIYFSGHETPGEHEKIMEFIRSEKAKPDHPNTRHCLYGLDADLI
 MLGLTSHEAHFSLREEVRFGGKKTQRVCAPEETTFHLLHLSLMREYIDYEF SVLKEKITFKYDIERIID
 DWILMGFLVGNDFIPHLPHLHINH DALPLL YGTYVTILPELGGYINESGHLNLPREFEYLVKLSDFDREH
 FSEVFDLKWFE SKVGNKYLNEAAGVAAEEARNYKEKKLKGQENSLCWTALDKNEGEMITSKDNLEDET
 EDDL FETEF RQYKRTYYMTKMGVDVSDDFLADQAACYVQAIQWILHYYHGVQSWSWYYPHYAPFLS
 DIHNISTLKIHFELGKPFKPFELLA VLPAA SKNLLPACYQHLMTNEDSPIIEYPPDFKTDLNGKQQEW
 EAVVLI PFIDEKRLL EAMETCNHSLKKEERKNQHSECLMCWYDRDTEFIYSPWPEKFP AIERCCTRYK
 IISLDAWRVDINKNKITRIDQKALYFCGFPTLKHIRHKFFLKKSGVQVFQSSRGENMML EILVDAESDE
 LTVENAVSSVLGKSVFNWPHLEEARVAVSDGETKFYLEEPPGTQKLYSGRTAPP SKVHLGDKEQSNW
 AKEVQGI SEHYLRKGI IINETS AVVYAQLL TGRKYQINQNGEVRL EKQWSKQVVPFVYQTIVKDIRAFD
 SRF SNIKTLDDL FPLRSMV FMLGTPYYGCTGEVQDSGDVIT EGRIRVIFSIPCEPNLDALIQNHKYSIK
 YNPGYV LASRLGVSGYL VSRFTGSIFIGRSRRNPHGDHKANVGLNLFKNKNEEVPGYTKKVGSEWMYS
 SAAEQLLAEYLERAPELFSYIAKNSQEDVFYEDDIWPGENENGAEKVQEIITWLKGHPVSTLSRSSCDLQ
 ILDAAIVEKIEEEVEKCKQRKNNKVRVTVKPHLLYRPLEQQHGVIPDRDAEFCLFDRVNVNRENF SVPV
 GLRGTIIIGIKGANREADVLF EVLFD EEFPGGLTIRCSPGRGYRLPTSALVNL SHGSRSETGNQKLT AIVK
 PQPAVHQHSSSSVSSGHLGALNHSPQSLFVPTQVPTKDDDFCNIWQSLQSGMKQYFQPTIQEKGAVL
 PQEISQVNHHSKSGFNDNSVKYQQRKHDHPRKFKEECKSPKAECWSQKMSNKQPN SGIENFLASLNISKE
 NEVQSSHHGEPPEEHLSPQSFAMGTRMLKEILKIDGSNTVDHKNEIKQIANEIPVSSNRDEYGLPSQP
 KQNKKLASYMKNPHSANEYHNQVSDMNMCWPAPSQIPPVSTPVT ELSRISL VGMPQPDFSFLRMPQMT
 VCQVKLSNGLLVHGPQCHSENAKEKAALFALQQLGSLGMNPLPSQV FANYPSAVPPGTIPPAFPPTA
 NIMPSSSHLFGSMPWGPSVPVPGKPFHHTLYSGT MPMAGGIPGGVHNQF IPLQVTKKRVANKNFENKEA
 QSSQATPVQTSQPDSSNIVKVS PRESSASL KSSPIAQP ASSFQVETASQGHSISHHKSTPISSSRRKSR
 KLAVNFGVSKPSE

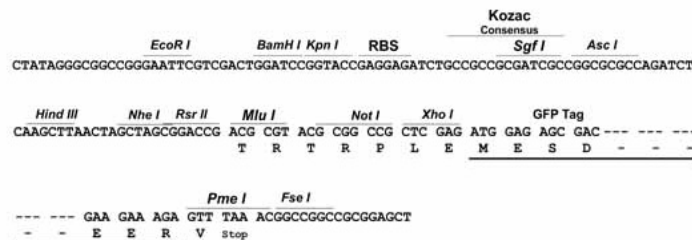
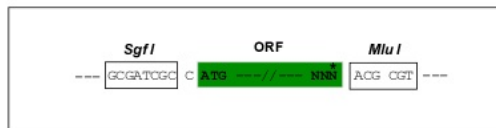
TRTRPLE - GFP Tag - V

Restriction Sites:

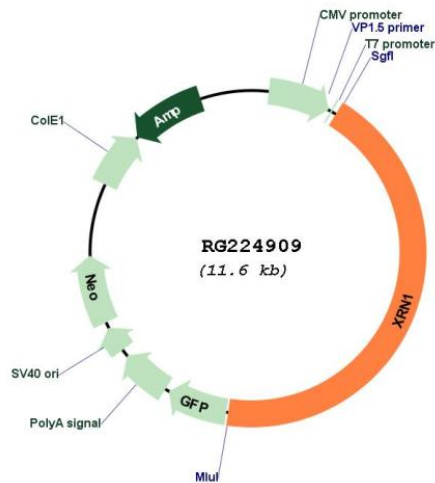
Sgfl-MluI

Cloning Scheme:

Cloning sites used for ORF Shuttling:



Plasmid Map:



ACCN: NM_001042604

ORF Size: 5079 bp

OTI Disclaimer: The molecular sequence of this clone aligns with the gene accession number as a point of reference only. However, individual transcript sequences of the same gene can differ through naturally occurring variations (e.g. polymorphisms), each with its own valid existence. This clone is substantially in agreement with the reference, but a complete review of all prevailing variants is recommended prior to use. [More info](#)

OTI Annotation: This clone was engineered to express the complete ORF with an expression tag. Expression varies depending on the nature of the gene.

Components:	The ORF clone is ion-exchange column purified and shipped in a 2D barcoded Matrix tube containing 10ug of transfection-ready, dried plasmid DNA (reconstitute with 100 ul of water).
Reconstitution Method:	<ol style="list-style-type: none">1. Centrifuge at 5,000xg for 5min.2. Carefully open the tube and add 100ul of sterile water to dissolve the DNA.3. Close the tube and incubate for 10 minutes at room temperature.4. Briefly vortex the tube and then do a quick spin (less than 5000xg) to concentrate the liquid at the bottom.5. Store the suspended plasmid at -20°C. The DNA is stable for at least one year from date of shipping when stored at -20°C.
RefSeq:	<u>NM_001042604.1</u> , <u>NP_001036069.1</u>
RefSeq Size:	10053 bp
RefSeq ORF:	5081 bp
Locus ID:	54464
Cytogenetics:	3q23
Protein Pathways:	RNA degradation
Gene Summary:	This gene encodes a member of the 5'-3' exonuclease family. The encoded protein may be involved in replication-dependent histone mRNA degradation, and interacts directly with the enhancer of mRNA-decapping protein 4. In addition to mRNA metabolism, a similar protein in yeast has been implicated in a variety of nuclear and cytoplasmic functions, including homologous recombination, meiosis, telomere maintenance, and microtubule assembly. Mutations in this gene are associated with osteosarcoma, suggesting that the encoded protein may also play a role in bone formation. Alternative splicing results in multiple transcript variants. [provided by RefSeq, Sep 2013]