

Product datasheet for **RG224883**

NUP62 (NM_153719) Human Tagged ORF Clone

Product data:

Product Type:	Expression Plasmids
Product Name:	NUP62 (NM_153719) Human Tagged ORF Clone
Tag:	TurboGFP
Symbol:	NUP62
Synonyms:	IBSN; p62; SNDI
Mammalian Cell Selection:	Neomycin
Vector:	pCMV6-AC-GFP (PS100010)
E. coli Selection:	Ampicillin (100 ug/mL)



[View online »](#)

ORF Nucleotide Sequence:

>RG224883 representing NM_153719
 Red=Cloning site Blue=ORF Green=Tags(s)

TTTTGTAATACGACTCACTATAGGGCGGCCGGAATTCGTCGACTGGATCCGGTACCGAGGAGATCTGCC
 GCC**CGGATCGCC**

ATGAGCGGGTTAATTTTGGAGGCACTGGGGCCCTACAGCGGGTTACGTTTGGCACTGCAAAGACGG
 CAACAACCACACCTGCTACAGGGTTTTCTTCTCCACCTCTGGCACTGGAGGGTTAATTTTGGGGCTCC
 CTTCCAACCAGCCACAAGTACCCCTTCCACCGGCTGTTCTCACTTGCCACCCAGACTCCGGCCACACAG
 ACGACAGGCTTCACTTTTGAACAGCGACTCTTCTCGGGGGAAGTGGATTTCTTTGGGGATCGGTG
 CTTCAAAGCTCAACTTGAGCAACACAGCTGCCACCCAGCCATGGCAAACCCAGCGGCTTTGGGCTGGG
 CAGCAGCAACCTCACTAATGCCATATCGAGCACCGTCACCTCCAGCCAGGGCACAGCACCCACCGGCTTT
 GTGTTTGGCCCTCCACCACCTCTGTGGCTCCAGTACCACATCTGGAGGCTTCTATTCACTGGTGGAA
 GCACGGCCCAACCCTCCGGTTTCAACATTGGCTCAGCAGGAATTCAGCCAGCCACGGCACCTGCCAC
 GTTGCCCTTCACTCCGGCCAGCCAGCAGCCACCACAGCAGGTGCCACACAGCCAGCTGCTCCACACCC
 ACAGCCACCATCACAGCACTGGGCCACGCTCTTTGCGTCAATAGCAACTGCTCCAACCTCATCTGCCA
 CCACTGGACTCTCCCTCTGTACCCTGTGACCACAGCGGGCGCCCCACTGCTGGGACACAGGGTTCAG
 CTTAAAGGCACCTGGAGCAGTTCCGGCACCTCCAACAACAATCCACCCTGCCACCGCCACCGCCACC
 ACCACCAGCAGCAGCAGCACCCAGGCTTTGCCTTGAATTTAAAACCACTGGCGCCAGCCGGGATCCCCA
 GCAATACAGCAGCTGCCGTGACCGCTCCACCTGGCCCTGGCGCAGCTGCAGGGCGGGTCCAGCTCCGC
 CATGACCTACGCGCAGCTGGAGAGCCTGATCAACAATGGAGCCTGGAGCTAGAGGACCAGGAGCGGCAC
 TTCTCCAGCAGCCACCCAGGTCAACGCCTGGGACCCAGCAGTGCAGAGATGGAGAAAAGATACCA
 GCCTGCACCGCAGGTGGAGAAGGTGAAGCTGGACCAGAAGAGGCTGGACCAGGAGCTCGACTTCATCCT
 GTCCCAGCAGAAGGAGCTGGAAGACCTGCTGAGCCCACTGGAGGAGTTGGTCAAGGAGCAGAGCGGGACC
 ATCTACCTGCAGCAGCGGATGAGGAGCGTGAGAAAACCTACAAGCTGGCTGAGAACATCGATGCACAGC
 TCAAGCGCATGGCCAGGATCTCAAGGACATCATCGAGCACCTGAACACGTCCGGGGCCCCCGCCGACAC
 CAGTGACCCACTGCAGCAGATCTGCAAGATCCTCAATGCGCACATGGACTCACTGCAGTGGATCGACCAG
 AACTCGGCCCTGCTGCAGAGGAAGGTGGAGGAGGTGACCAAGGTGTGCGAGGGCCGGCGCAAGGAGCAGG
 AGCGCAGCTTCCGGATCACCTTTGAC

ACGCGTACGCGGCCGCTCGAG – GFP Tag – GTTTAA

Protein Sequence:

>RG224883 representing NM_153719
 Red=Cloning site Green=Tags(s)

MSGFNFGGTGAPTGGFTFGTAKTATTTTPATGFSFSTSGTGGFNFGAPFPATSTPSTGLFSLATQTPATQ
 TTGFTFGTATLASGGTGFSLGIGASKLNLSNTAATPAMANPSGFLGSSNLNNAISSTVTSQGTAPTGF
 VFGPSTTSVAPATTSGGFSFTGGSTAQPSGFNIGSAGNSAQPTAPATLPFTPATPAATTAGATQPAAPT
 TATITSTGPSLFAFIATAPTSSATTGLSLCTPVTTAGAPTAGTQGFSLKAPGAASGTSTTTSTAATATAT
 TTSSSTTGAFALNLKPLAPAGIPSNTAAAVTAPPGPAAAAGAAAASSAMTYAQLESLEINKWSLELEDQERH
 FLQQATQVNAWDRTLIENGEKITSLHREVEKVKLDQKRLDQELDFILSQQKELEDLLSPLEELVKEQSGT
 IYLVQHADEEREKTYKLAENIDAQLKRMADLKDIIIEHLNLSGAPADTSDPLQQICKILNAHMSLQWIDQ
 NSALLQRKVVEEVTKVCEGRRKEQERSFRITFD

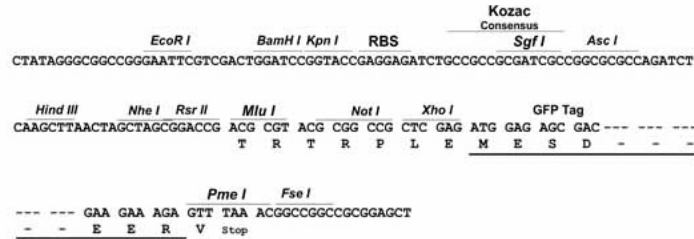
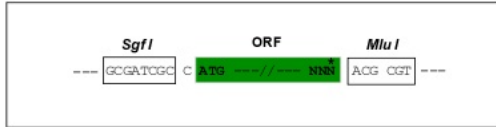
TRTRPLE – GFP Tag – V

Restriction Sites:

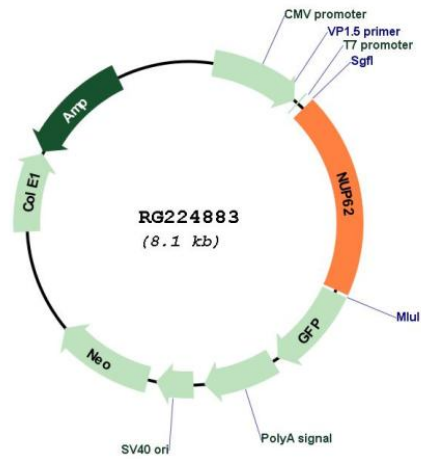
Sgfl-Mlul

Cloning Scheme:

Cloning sites used for ORF Shutting:



Plasmid Map:



ACCN:	NM_153719
ORF Size:	1566 bp
OTI Disclaimer:	The molecular sequence of this clone aligns with the gene accession number as a point of reference only. However, individual transcript sequences of the same gene can differ through naturally occurring variations (e.g. polymorphisms), each with its own valid existence. This clone is substantially in agreement with the reference, but a complete review of all prevailing variants is recommended prior to use. More info
OTI Annotation:	This clone was engineered to express the complete ORF with an expression tag. Expression varies depending on the nature of the gene.
Components:	The ORF clone is ion-exchange column purified and shipped in a 2D barcoded Matrix tube containing 10ug of transfection-ready, dried plasmid DNA (reconstitute with 100 ul of water).
Reconstitution Method:	<ol style="list-style-type: none">1. Centrifuge at 5,000xg for 5min.2. Carefully open the tube and add 100ul of sterile water to dissolve the DNA.3. Close the tube and incubate for 10 minutes at room temperature.4. Briefly vortex the tube and then do a quick spin (less than 5000xg) to concentrate the liquid at the bottom.5. Store the suspended plasmid at -20°C. The DNA is stable for at least one year from date of shipping when stored at -20°C.
RefSeq:	NM_153719.4
RefSeq Size:	3435 bp
RefSeq ORF:	1569 bp
Locus ID:	23636
UniProt ID:	P37198
Cytogenetics:	19q13.33
Protein Families:	Druggable Genome, Transcription Factors
Gene Summary:	The nuclear pore complex is a massive structure that extends across the nuclear envelope, forming a gateway that regulates the flow of macromolecules between the nucleus and the cytoplasm. Nucleoporins are the main components of the nuclear pore complex in eukaryotic cells. The protein encoded by this gene is a member of the FG-repeat containing nucleoporins and is localized to the nuclear pore central plug. This protein associates with the importin alpha/beta complex which is involved in the import of proteins containing nuclear localization signals. Multiple transcript variants of this gene encode a single protein isoform. [provided by RefSeq, Jul 2008]