

Product datasheet for **RG224872**

GPR112 (ADGRG4) (NM_153834) Human Tagged ORF Clone

Product data:

Product Type:	Expression Plasmids
Product Name:	GPR112 (ADGRG4) (NM_153834) Human Tagged ORF Clone
Tag:	TurboGFP
Symbol:	ADGRG4
Synonyms:	GPR112; PGR17; RP1-299116
Mammalian Cell Selection:	Neomycin
Vector:	pCMV6-AC-GFP (PS100010)
E. coli Selection:	Ampicillin (100 ug/mL)
ORF Nucleotide Sequence:	>RG224872 representing NM_153834 Red=Cloning site Blue=ORF Green=Tags(s)

TTTTGTAATACGACTCACTATAGGGCGGCCGGAATTCGTCGACTGGATCCGGTACCGAGGAGATCTGCC
GCC**CGATCGCC**

ATGAAAGAACACATCATATATCAGAAGCTTTATGGATTGATTCTCATGTCGAGTTTTATCTTTCTCTCAG
ATACACTTTCACTAAAAGGAAAAAGCTGGATTTTTTTGGAAGAGGTGACACATATGTAAGCCTGATAGA
TACCATTCTGAACTCAGCCGATTCACAGCATGCATTGATCTGGTATTTCATGGATGACAACCTCAAGGTAT
TGGATGGCCTTCTTTATATTACTAATAACGCCCTCTGGGCAGAGAAGACATAGACCTGGACTGCGAG
GAGACCATCAGCAGCTAATACTATACAGATTGGGAAAGACCTTTTCTATCCGTACCACCTGGCTTCATT
TCAATGGCATAACAATATGCTTGATATGGGATGGTGTGAAGGGCAAATTAGAACTTCTCTGAATAAAGAA
AGGATACTGGAAGTAACGGATCAACCACACAACCTGACACCTCATGGGACTCTGTTCTAGGGCACTTTT
TCAAGAATGAGAGCAGCGAGGTTAAAAGCATGATGCGTAGCTTTCTGGCAGCTTGACTACTTTCAACT
CTGGGACCACATCCTGGAAAACGAAGAGTTTATGAAGTGTGTAGATGGAAATATAGTTAGTTGGGAAGAA
GACGTCTGGCTTGTCAACAAGATCATCCCACTGTTGACAGGACACTGCGCTGCTTTGTTCTGAAAATA
TGCAATTCAGAAAAAAGTACAACCTGTTTCAACAGATAGATGACCACTCCATCCCAATTAAGTGG
AGTAAAACCACAAAATACTGCACATTCTCTACACTATTGTCTCAAAGCATACCTATATTTGCAACTGAT
TACACAACCATATCATATTTCCAATACAACATCTCCACCTCTGGAACAATGACTGCACAAAAAATCTTAA
AGACACTGGTAGATGAGACAGCTACATTTGCAGTGGATGTTTTATCAACTTCATCAGCCATCTCTGCCC
TACCCAGAGTATATCCATAGACAATACTACCAATTCCATGAAAAAACGAAATCTCCATCTTCAGAAAGC
ACAAAGACAACAAAAATGGTTGAAGCCATGGCTACTGAAATCTTTCAACCACCTACACCTTCTAATTTCC
TATCCACATCCAGATTTACCAAGAATTCAGTTGTATCTACAACCTCAGCAATTAATCTCAGTCGGCTGT
TACGAAGACAACATCTTTATTTTCAACTATTGAGTCAACATCTATGTCTACAACACCTTGTCTCAAACAA
AAATCCACAAATACTGGGCACTCCCTATCTCCACAGCTGGCCAGGAGTTCATTGAATCTACAGCTGCC
GAACTGTACCTTGGTTTACAGTGGAAAAGACTTCACTGCATCTACTCATGTTGGGACTGCATCATCATT
CCCACCTGAGCCTGTGCTCATCTCCACAGCTGCTCCAGTAGATTCTGATTTCTAGAAACCAGACAGCA



[View online »](#)

TTTCCATTGGCAACAACCTGATATGAAAATAGCATTACAGTCCATTCATTGACTCTCCCACTAGGCTTA
TTGAGACCACACCTGCCCAAGGACAGCTGAAACAGAATTGACATCTACAAATTTTCAGGATGTCTCTTT
ACCCAGAGTGGAAAGATGCCATGTCTACTTCCATGTGCGAAAGAGACCTCCTCTAAGACCTTTTCTTTCTTA
ACATCCTTTTCACTTACTGGGACTGAGAGTGTACAGACAGTTATTGATGCTGAAGCTACACGTACAGCCT
TAACTCCTGAAATCACACTTGCATCTACAGTGGCTGAAACTATGCTTTCCTCCACAATCACAGGACGAGT
TTACACCCAGAATACACCTACAGCTGATGGACACTTGCCTACTTTGATGTCCACTAGATCAGCTTCCACA
TCCAAGGCACCTGAGTCAGTCCCACATCCACAAGTGAAGCTGCCCATCTGTTCTCCAGCAATGAGA
CCATTTGGACTTCTAGGCCAGACCAGGCCCTGCTGGCATCTATGAACACAACCACATACTCACATTTGT
GCCTAATGAAAATTTTACATCAGCATTTTATGAGAATACTACTTATACAGAATATTTATCCGCAACTACC
AATATCACCCCACTGAAAGCATCTCCAGAGGGCAAAGGTACCACTGCCAATGATGCTACTACAGCCAGAT
ATACAACAGCTGTATCCAAATTGACATCACCATGGTTTGTAAATTTCTCCATAGTTTCTGGAACACATC
CATAACCAATATGCCTGAATTTAACTTACCCTTACTACTAAAAACAATACCTATGTCTACAAAACT
GCAATGAACTTCTTTGACACCAAGGGAGACTGTTGTTCCATCAGTAGATAAATCTACTCTTGCTT
GCATTAACCAAAATTTTCTACTGAGGAAAGTCTTCTGAGACCACAAAACAGAATAAATGGTGAAT
TGTATTTGGAGGTACAACGACCCCTGTACCAAGTCAGCAACAACACAAGATTAATGCCACTGTGACA
AGAAAAGAAGCAACTTCCATTATCTTATGAGAAAATCAACTATAGCAGCAGTGGCTGAGGTTTCTCCAT
TTTCAACAATGCTGGAAGTGACAGACGAATCAGCACAAAGGGTGACAGCTTCTGTCACTGTTTCTCTTT
TCCTGATATAGAAAAGCTAAGTACCCCATTTGGATAATAAAACTGCAACAACCTGAGGTGAGAGAAAGTTGG
CTTTTGACAAAATTTGGTAAAACACACCTAGGAGTTCATACAATGAAATGACAGAAATGTTTAAATTTTA
ACCACACCTATGTAGCACATTGGACTTCAGAGACATCTGAGGGAATTTGAGCTGGATCTCCCACTTCTGG
GAGCACATATATTCGGTGAACCCCTGGTGCTTCTACCACAAGGATATCAGAAACAGTTTCTCCACT
ACCCCTACAGACAGGACAGCTACGTCTTGTCTGATGGTATCTTACCTCCACAGCCTACAGCTGCTCATT
CCTCAGCAACCCCTGTGCTGTTACTCATATGTTCTCATTGCCAGTTAATGGCAGTTTCTGGTGGCTGA
GGAGACTGAGGTTACCATGTCTGAGCCTTCTACACTGGCCAGGGCTTTTTCTACATCTGTGCTCTCAGAT
GTCTCAAATCTATCCTCAACTACAATGACCACAGCATTGGTACCACCTTTGGATCAGACTGCTTCCACAA
CCATTGTTATTGTGCTACCCATGGAGACTTGATTCTGACCACTTCAGAGGCCACGGTAATCTCTGTGAG
GAAGACATCCATGGCAGTTCCTTCTCTGACAGAAAACCACTTTTCACTGAGACTCTCCACTCTGTG
ACAGCTAAGGCTGAGACCACCTTTTCTACCTCAGTTGATACAGTAACCCCATCTACACACACTTTG
TCTGCTCAAAACCTCCCCTGACAACATTCCTCTGCGTCTCCACTCATGTGATCTCAACTACGTCTAC
ACCAGAAGCAACTCAACCAATATCTCAAGTAGAGGAGACTTCTACCTATGCTCTCAGCTTCCCATATACT
TTCAGTGGTGGTGGAGTTGTTGCCAGCTGGCTACTGGCACCACAGAGACCTCTGTTGTTGATGAGACCA
CACCCCTCACACATCTCTGCAATAAGTTGACTACTTCAGTAAACAGTCACATTTCTCATCTGCCACATA
TCGTGTACACACACCAGTGTCCATCCAGTTGGTACTAGCACCTCTGTCTTATCTCCGACAAAAGACCAG
ATGACCATATCCCTGGGAAAAACCCCTAGAACTATGGAGGTGACAGAAATGTCCCCATCAAAGAATCTT
TTATTTCACTACTCCCGGGTACTCCATCTTTGGAAATGACAGATACAGGATTTCTCTGAGACCACAAAAAT
TTCCAGTCACCAAACACATTCGCCTTCAGAGATCCACTTGGGACTCCCTCTGATGGAAATTTGGCTTCA
TCTCCACTTCTGGAAGCACACAGATTACACCAACCTTGACCTCAAGTAACACAGTAGGTGTTACATTC
CAGAAATGTCTACCAGTCTTGGGAAAACAGCTCCTCCCTCACAAGCTCTGACAATCACCCTTTTTGTG
TCCTGAAAAGGAAAGCAGAGTGCCCTTCCAGCATATACTCCAGGACTGTGAAATGATAGTAAACTCC
ACCTATGTGACTCACTCTGTCTCATATGGCCAGGATACTTCATTTGTAGATACCACAACCTCCAGCTCAA
CAAGGATATCAAATCCTATGGACATCAATAACAATTTTTTCACTTGCATTCACTTAGGACACAACCTGA
GGTACTTCAGTTGCCTCTTTCACTTTCTGAAAGCACACAGACTTTCCCTGAGTCTTGTCTCTTTCCACA
GCTGGACTATAAATGACGGTTTTACAGTTCTCTCCGACAGGATCACTACAGCCTTTTCTGTTCCAAATG
TACCTACAATGCTTCTAGAGAATCCTCTATGGCAACGTCCACTCCTATTTACCAGATGCTCTATTGCC
AGTTAATGTAAGTGCCTTCACTCCAAAAAGTTTCTGACTCCCAATAGTGATAAATAAATCTTCT
AAAACAATGCATCCAGTTGTTTAAAAGTCCCTGTACAGCCACTTCTGGGCCTATGTCTGAGATGCTCT
CAATACCAGTTAATAACTCTGCTTTCACACCTGCAACAGTCTCTTCTGACTTCCACAAGAGTTGGGTT
ATTCTACTTTTATTGTCTTCACTTACCCCAAGGACTACTATGACCATGCAACATCTACATTGGATGTC
ACACCTGTGATATGCTGGGGCTACTTCAAAAAACAAAATGGTTTCTCTGCTTCACTACAGAAATGA
TAGAGGCACCTTCCAGGATCACACCTACGACCTTTCTCTCCAACAGAGCCAACCTTTGCCCTTTGTAAA
AACCGTCCCACCACCATATGGCTGGGATAGTGACTCCATTTGTAGGCACCCTGCCTTCTCTCCACTC
AGTTCTAAGGACTGGAGCTATTTCTCCATTCCAAAGACCACATTTTACCATTTCTATCAGCAACTC

AACAGTCATCACAAAGCAGATGAGGCTACAACCTTTGGGCATATTATCTGGGATTACTAACAGGTCCCTATC
TACTGTGAACAGTGGTACAGGGGTAGCTCTCACAGATACTTATCCAGAATCACTGTTTCTGAAAATATG
CTTTCACCTACTCATGCAGATAGTCTCCATACTTCTTCAATATTCAGGTTTCCCATCTCTGACTAGCT
TTAAGAGTGCTTCTGGACCCACAAAAATGTTAAAAACAACCACCAATTGCTTTTCTTCTAATACTAGAAA
GATGACTTCCTTGTAGAAAAGACTTCCCTAACAACTATGCCACATCTTGAATACCCCTGTTTCATAC
CCTCCATGGACCCCATCCAGTCAACTCTACCTCTTTGACATCATTTGTTTATTACCTCATAGTACTG
AAGCTGAGATCTCTACTCCAAGACCTCTCCTCCCACATCCAAATGGTTGAATTTCCAGTTTGGG
AACAAAGAAATGACATCTAGTAATACCCAACCTCTGCTTATGACTTCTGGAACATACCCACAGCTGAAGGT
TCTCAGTTTCCAATTTCCACCCTATTAATGTACTACATCCAATGAGATGGAAACAGAGACTCTACACC
TTGTTCTGGGCCTTTGTCAACATTCACAGCCTCTCAGACTGGTCTAGTATCTAAAGATGTCATGGCAAT
GTCATCAATTCCTATGTCAGGAATTCCTCAACCATGGGCTTTCTGAGAACCTTCATTATCAACATCT
TTAAGAGTATCACTTCCACATGGCTGACGTTAAGCACACATTTGAGAAAATGACCACATCTGTAACCTC
CTGGGACCACACTCCCATCAATTCCTTCTGGTGCCACTCAGGATCTGTAATTTCAAAGTACCCATTCT
GACATGGCTCTTATCTAGTCTCCCTTCTGGCTCCCTCCGGCACTGTATCTAATGCCCTCATGTTATG
ACTTCTCTACAGTAGAGGTGTCAAAATCAACATTTCTGACATCTGACATGATATCAGCGCACCCATTCA
CTAACTTGACAACACTACCCTCTGCTACTATGAGCACCATACTACCCGAACCATTCTTACACCTACACT
GGTGGTATCACTACTGGCTTCCAACCTCTCTCCCTATGTCTATAAATGTCACAGATGACATTGTGTAC
ATTTCCACACACCCTGAGGCATCTCCAGAACCACAATACTGCCAACCCAGGACTGTGTCTATCCTT
CATCTTCAGCAGAAAAGACTATGTCACCTTCTACAACCTGACCACACTCTATCTGTTGGTGCCATGCCTCT
GCCTAGCTCTACAATAACATCTTCATGGAACAGAATCCAACCTGCATCATACCCCTACTTTAATTATT
CCTAAGCCCACTGGACTCCCTTCTAATAATAATGACTACTACATCCACTGTTCTGGAGCCTCATTTT
CACTCATATCCACTGGGTGACATATCCTTTTACAGCAACTGTGCTTCCACCAATATCGCTTTTTTTGA
AACAACTTGGCTGGACTCCACACCTTCTTCTATCTACGGAAGCATCGACTTCGCTACTGCCACCAAG
TCCACAGTTTCTTCTACAATGTTGAAATGAGCTTCTGTCTTTGTTGAAAGGCCAAGGATCCCTATTA
CCAGTGTATAAATGAATTTACGAAAAATTCGTTGAATCTATATTTCAGAACAGTGAATTTTCTCTTGC
TACTCTGGAACCCAAATTTAAAAGCAGGGACATTTCAGAGGAAGAGATGGTATGGATCGAGCTATTTTG
GAACAGAGAGAAGGACAAGAAATGGCTACAATTTCTATGTACCATACAGTTGTGTTTGTGAGGTATCA
TAAAAGCCAGCTTCTCTTAGCATCCTCTGAATTGATGAGAAAAATCAAAAGTAAAATACATGGCAACTT
CACACATGGAACTTACACAAGATCAATTGACGTTATTAGTAACTGTGAACACGTTGCAGTGAAAAAA
CTAGAGCCTGAAATGCAAAGCTGATGAAACAGCCTCTAAATACAAAGGGACCTATAAGTGCTATTA
CCAACCCTACGGAGACAGCCAAACCAGATGCATAAAAAATGAGGATGGAATGCCACAAGATTCTGTT
AATCAGCATCAACACGGGCAAAATCTCAGTGGGAAAAGCCAAAGTTTAAACAATGCAAATGCTTCAAGAA
CTTCTGACAAGATTGTGGATCTTGCTAATATTACCATAAGTGATGAGAATGCTGAGGATGTTGCAGAGC
ATATTTTAAATTTGATAAATGAATCCCCAGCCCTGGGTAAGAAGAGACAAGATTATTGTTTCTAAAAT
ATCAGATATTTCACAATGTGATGAGATAAGTATGAACCTAACTCATGTTATGTTACAAAATCAACGTT
GTTTTGAAAAAGCAAAACAATCCCGCTCTGATCTGCATGAAATAAGCAATGAAATTTCTGAGGATAATTG
AGCGTACTGGTACAAGATGGAGTTTTCTGGGCAGATAGCAAATCTGACGGTGGCCGGCTGGCTTTGGC
TGTGCTGCGGGGGACCACAGTTTGTGATGGCATGGCTTTCAGCATTCACTCCTATGAAGAAGGCACAGAC
CCTGAGATTTTCTAGGCAATGTCCTGTGGGAGGGATTTGGCTCCATATATTTGCCTAAATCACTGA
CGGAGAGAATTCCTCTTAGCAACTTACAACGATCTTGTTTAATTTCTTTGGCCAACTTCACTCTTTAA
GACCAAAAATGTCACTAAAGCATTAAACCCTATGTTGTGAGTGCCAGCATTTCAGATGATATGTTCAAT
CAAACTTAGCTGACCCAGTGGTATCACTCTGCAGCATATTGGAGGAAACCAGAATTATGGTCAAGTTC
ACTGTGCCTTTTGGGATTTTGAATAATAATGGGCTGGGTGGATGGAATTCGTCAAGCTGTAAAGTAAA
GGAAACAATGTAATTACACAATCTGTGAGTGACCACCTCACCCATTTTGGAGTCTTAATGGATTTA
TCCAGGTCTACAGTGGATTGAGTGAATGAACAGATATTAGCGCTTATAACATACCCGGATGTGGAATCT
CCTCCATTTTCTGGGAGTTGACGTGGTACATACATAGCTTTTCAAACTTCGAAAAGATTATCCTG
CAAAATCTGATCAACCTGTGCACAGCACTACTGATGCTAAACCTGGTATTTTGTCAATCTTGGTTG
TCATATTTTCAAGAAAGTGGGAGTTTGTATCACAGCTGCAGTGGCACTTCACTTCTCTGCTTGTCTT
TTACTTGGATGGCCTGGAGGCAGTCCACATGATTTGGCTCTAGTCAAAGTCTTCAACATATACATTCC
AAATTATATCCTTAAATTTGTCTAGTTGGTTGGGGAATCCCGGCTATCATGGTGGAATCACAGTCAGT
GTGAAAAAAGATCTGTATGGAATCTGAGCCCAACAACCTCCGTTTTGTTGGATTAAGATGATTCTATCT
TTTACATCTCAGTGGTGGCTATTTTGGCTCATATTTCTCATGAATCTCCATGTTCTGCAGTGTCT

TGTTCAACTGAATTCTGTGAAATCCCAAATCCAGAAGACTCGGCGGAAGATGATCCTGCATGACCTCAAA
GGCACAATGAGCCTGACATTCTTACTTGGCCTCACCTGGGGGTTTGCATTTTTTGCTTGGGGACCCATGA
GGAACTTTTTCTGTATTTGTTGCCATTTTAACTTTGCAAGGATTCTTCATTTTTGTGTTTCACTG
TGTGATGAAGGAGAGTGTGCGGGAGCAGTGGCAGATACACCTCTGCTGTGGGTGGTTGCGATTGGATAAC
TCTTCTGATGGGAGCAGCCGGTGCAGATAAAGTTGGATATAAACAGGAGGGACTAAAGAAAATCTTTG
AGCACAACTGTTGACGCCATCTCTCAAGTCAACTGCAACTAGCTCCACTTTCAAATCTTAGGCTCTGC
ACAAGGCACACCTTCAGAAATAAGCTTTCAAATGATGACTTTGACAAAGATCCTTACTGTTCTCTCCT

ACGCGTACGCGGCCGCTCGAG - GFP Tag - GTTTAA

Protein Sequence: >RG224872 representing NM_153834
 Red=Cloning site Green=Tags(s)

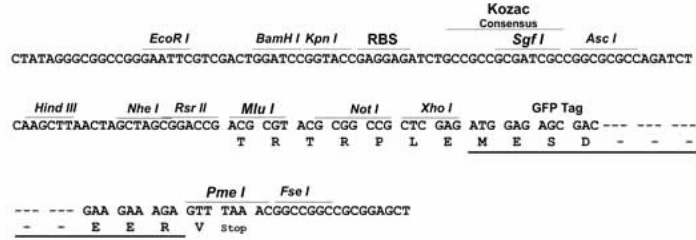
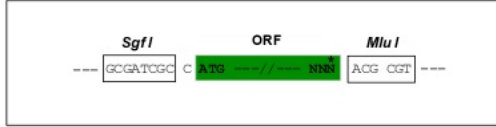
MKEHIIYQKLYGLILMSSFIFLSDTL SLKGKLDFFGRGDTYVSLIDTIPELSRFTACIDLVMDDNSRY
 WMAFSYITNNALLGREDIDLGLAGDHQQLILYRLGKTF SIRHHLASFQWHTICLIWDGVKGLLEFLNKE
 RILEVTDQPHNLTPHGTFLFGHFLKNESSEVKSMRSPGSLYYFQLWDHILENEEFMKCLDGNIVSWEE
 DVWLVNKIIPVDRTLRCFVPENMTIQEKSTTVSQIDMTTPSQITGVKQPNTAHSSTLLSQSIPIFATD
 YTTISYSNTPPLETMTAQKILKTLVDEATFAVDVLTSSAISLPTQSI SIDNTTNSMKTKSPSES
 TKTTKMEAMATEIFQPPTPSNFLSTRFTKNSVVSTSAIKSQSAVTKTSLFSTIESTSMSTTCLKQ
 KSTNTGALPISTAGQEF IESTAAGTVPWFTVEKTPASTHVGTASSFPPEPVL ISTAAPVDSVFPNRQTA
 FPLATDMKIAFTVHSLTLPTRLIETTPAPRTAETELTSTNFQDVSLPRVEDAMSTSMSKETSSKTF SFL
 TSFSFTGTESVQTVIDAEARTALTP EITLASTVAETMLSSTITGRVYTQNTPTADGHLLTLMSTRSAST
 SKAPESGPTSTTDEAAHLFSSNETIWT SRPDQALLASMNTTITLTFVFNENFTSAFHENTTYTEYL SATT
 NITPLKASPEGKTTANDATTARYTTAVSKL TSPWFANFSIVSGTTSITNMEFKLTLLLLKTI PMSTKP
 ANELPLTPRETVVPSVDIISTLACIQPNFSTEEASSETTQTEINGAIVFGGTTTTVPKSATTQRLNATVT
 RKEATSHYLMRKSTIAA VAEVSPFSTMLEVTDESAQRV TASVTVSSFPDIEKLS TPLDNKATTEVRESW
 LLTKLVKTTPRSSYNEMTEMFNFNHTYVAHW TSETSEGI SAGSPTSGSTHIFGEPLGASTTR ISETSFST
 TPTDRTATSLSDGILPPQPTAAHSSATPVVTHM FSLPVNGSSVVAEETEVMSEPSTLARAFSTSVLSD
 VSNLSSTMTTALVPPLDQASTTIVIVPTHGDL IRTTSEATVISVRKTSMAVPSLTETPFHSLRLSTPV
 TAKAETTLFSTSVDTVPSTHTLVCSKPPDNIP PASSTHVI STTSTPEATQPI SQVEETSTYAL SFPYT
 FSGGGVVASLATGTTETSVDETTPSHI SANKL TTSVNSHISSATYRVHTPVSIQLVTSTSVLSSDKDQ
 MTISLKGTPRTMEVTEMSPSKNSFISY SRGTPSLEMTDTGFPETTKISSHQTHSPSEIPLGTPSDGNLAS
 SPTSGSTQITPTLTSNNTVGVHIPEMSTSLGKTALPSQAL TITTFLCPEKESTSALPAYTPRTVEMIVNS
 TYVTHSVSYGQDTSFVDTTSSSTRISNPM DINTTFSHLHSLRTOPEVTSVASF ISESTQTFPESLSLST
 AGLYNDGFTVLSDRITTA FSVPNVPTMLPRESSMATSTPIYQMSL PVNVTAFTSKKVSDTPPIVITKSS
 KTMHPGLKSPCTATSGPMSEMSSIPVNN SAFTPATVSSDSTRVGLFSTLLSSVTPRTTMTQTSTLDV
 TPVIYAGATSKNMVSSAFTTEIEAPSRIPTTFLSPT EPTLPFVKTVPTTIMAGIVTPFVGTAFSPL
 SSKSTGAISSIPKTTFS PFLSATQQSSQADEATL GILSGITNRS LSTVNSGTGVALTDTYSRITVPENM
 LSPTHADSLHTSFNIQVSPSLTSFKSASGPTKNV KTTTNCFSNTRKMTS LLEKTSLTNYATSLNTPVSY
 PPWTPSSATLPSLTSFVYSPHSTAEISTPKTSP PPTSQMV EFPVLGTRMTSSNTQPLLMTSWNIPTAEG
 SQFPISTTINVPTS NEMETETLHLVPGPLSTFTASQTGLVSKDVMAMSSIPMSGILPNHGLSENPSLSTS
 LRAITSTLADVKHTFEKMTTSVTPGTTLPSILSGATSGSVISKSPILTWLLSSLPSGSPPATVSNAPHVM
 TSSTVEVSKSTFLTSDMISAHPFTNL TLP SATMSTIL TRTIPTPLGGITTGFP TSLPMSINVTDDIVY
 ISTHPEASSRTTITANPRTVSHPSFSRKT MSPSTTDHTL SVGAMPLPSSTITSSWNRIPTASSPSTLII
 PKPTLDSL LNIMTTTSTVPGASFPLISTGVTY PFTATVSSPISSFFETT WLDSTPSFLSTEASTSPTATK
 STVSFYNVEMSFVSVVEEPRIPITSVINEFTENSLNSIFQNSEFSLATLETQIKSRDI SEEMVM DRAIL
 EQREGQEMATISYVPYSCVCQV IIKASSSLASSELMRKIKSKIHGNT HGNFTQDQLTLLVNCEHVAVKK
 LEPGNCKADETASKYKGYKWL TNPTETAQTRC IKNEDGNATRFCSISINTGKSQWEKPKFKQCKLLQE
 LPDKIVDLANITIS DENAEDVAEHLNL INE SPALGKEETKII VSKI SDISQCDEISMNL THVMLQI INV
 VLEKQNSASDLHEISNEILRI IERTGHKMEFSGQIANLTVAGLALAVLRGDHTFDGMAFSIHSYEEGTD
 PEIFLGNVPVGGILASIYLPKSLTERIPLSNLQ TILFNFFGQTS LFKTKNVTKAL TTYVVSASISDDMFI
 QNLADPVVITLQHIGGNQYGVHCAFWD FENNGLGGWNSSGCKVKETNVNYTICQCDHLTHFGV LMDL
 SRSTVDSVNEQILALITYTGCGISSIFLGVAVV TYIAFHKLKRDYPAKIL INLCTALLMLNLVFLINSWL
 SSFQKVGVCITAAVALHYFLLVSFTW MGLEAVHMYLALVKVFNIYIPNYILKFCLVGVGIPAIMVAITVS
 VKKDLYGTLSP TTPFCWIKDDSI FYISVVA YFCLIFL MNL SMFCTVLVQLNSVKSQIQKTRRKMILHDLK
 GTMSLTFLLGLTWGFAFFAWGPMRNFLL YLFAIFNTLQGF FIFVFHCVMKESVREQWQIHLCCGWLR LNDN
 SSDGSSRCQIKVGYKQEG LKKIFEHKL LTPSLKSTATSSTFKSLGSAQGPSEISFPNDDFDKDPYC SSP

TRTRPLE - GFP Tag - V

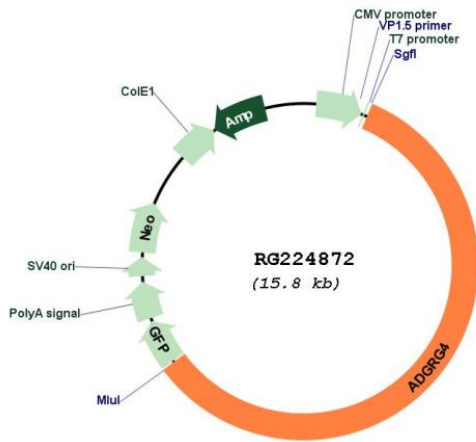
Restriction Sites: Sgfl-MluI

Cloning Scheme:

Cloning sites used for ORF Shutting:



Plasmid Map:



ACCN: NM_153834
 ORF Size: 9240 bp

OTI Disclaimer: Due to the inherent nature of this plasmid, standard methods to replicate additional amounts of DNA in E. coli are highly likely to result in mutations and/or rearrangements. Therefore, OriGene does not guarantee the capability to replicate this plasmid DNA. Additional amounts of DNA can be purchased from OriGene with batch-specific, full-sequence verification at a reduced cost. Please contact our customer care team at custsupport@origene.com or by calling 301.340.3188 option 3 for pricing and delivery.

The molecular sequence of this clone aligns with the gene accession number as a point of reference only. However, individual transcript sequences of the same gene can differ through naturally occurring variations (e.g. polymorphisms), each with its own valid existence. This clone is substantially in agreement with the reference, but a complete review of all prevailing variants is recommended prior to use. [More info](#)

OTI Annotation: This clone was engineered to express the complete ORF with an expression tag. Expression varies depending on the nature of the gene.

Components: The ORF clone is ion-exchange column purified and shipped in a 2D barcoded Matrix tube containing 10ug of transfection-ready, dried plasmid DNA (reconstitute with 100 ul of water).

Reconstitution Method:

1. Centrifuge at 5,000xg for 5min.
2. Carefully open the tube and add 100ul of sterile water to dissolve the DNA.
3. Close the tube and incubate for 10 minutes at room temperature.
4. Briefly vortex the tube and then do a quick spin (less than 5000xg) to concentrate the liquid at the bottom.
5. Store the suspended plasmid at -20°C. The DNA is stable for at least one year from date of shipping when stored at -20°C.

RefSeq: [NM_153834.4](#)

RefSeq Size: 9931 bp

RefSeq ORF: 9243 bp

Locus ID: 139378

UniProt ID: [Q8IZF6](#)

Cytogenetics: Xq26.3

Protein Families: Druggable Genome, Transmembrane

Gene Summary: This gene encodes a G-protein coupled receptor belonging to a large family of diverse integral membrane proteins that participate in various physiological functions. Members of this superfamily are characterized by a signature 7-transmembrane domain motif. The ligand for this family member is unknown, and it is therefore an orphan receptor. This receptor is known to be expressed in normal enterochromaffin cells and in gastrointestinal neuroendocrine carcinoma cells, and it is therefore considered to be a novel biomarker or target for immunotherapy. [provided by RefSeq, May 2010]